



# ANDERSON PROCESS

*CHEMICAL PROCESS EQUIPMENT BUILT TO STAND THE TEST OF TIME*



**CHEMICAL  
SOLUTIONS**



# PUMPS

**ALMATEC  
E-SERIES AODD PUMP**



- Flows up to 210 GPM
- Pressures up to 100 psi
- Temperatures up to 248°F
- Three sizes from 1/4" up to 3"
- Max suction lift: 31.2' wet / 16.4' dry
- Max capacities of 0.9 to 35 m<sup>3</sup>/h

**ANSIMAG SEALLESS  
MAGNETIC DRIVE PUMP**



- Flows up to 1,470 GPM
- Pressures up to 225 psi
- Temperature range of -20°F to 250°F
- Meets exacting ASME / ANSI B73.3 and ISO 2858 chemical process pump standards

**BLACKMER  
SLIDING VANE PUMP**



- Flows up to 2,200 GPM
- Pressures up to 200 psi
- Viscosity up to 21,000 cP
- Temperatures up to 500°F
- Cast iron, ductile iron and stainless steel options available

**ATLAS COPCO  
DHS VSD+**



- Dry screw vacuum pumps for the chemical industry
- Reliable and contaminant-free extraction of chemicals & vapors
- Pumping speed: 38-118 ACFM
- Ultimate vacuum: 29.9 in-HgV

**BLACKMER  
INTERNAL GEAR PUMP**



- Flows up to 500 GPM
- Pressures up to 200 psi
- Viscosity up to 431,000 SSU
- Temperatures up to 650°F
- Available in port sizes from 1-1/2" NPT to 6" ANSI flanges

**FINISH THOMPSON  
ULTRACHEM MAG DRIVE PUMP**



- Flows up to 1,450 GPM
- Pressures up to 136 psi
- Viscosity up to 200 cP
- Temperatures up to 250°F
- ANSI, ISO/DIN Dimensional ETFE-lined ductile iron

**GOULDS NPE  
SERIES PUMP**



- Flows up to 175 GPM
- Up to 150 ft head / 125 psi
- 316L stainless steel construction
- High efficiency enclosed impeller
- Standard John Crane mechanical seal design

**GRISWOLD  
811 ANSI PUMP**



- Flows up to 7,000 GPM
- Pressures up to 390 psi
- Temperatures up to 500°F
- ANSI part interchangeability
- Alloy 20, ductile iron, 316 stainless steel and CD4MCu options

**LIQUIFLO  
GEAR PUMP**



- Flows up to 50 GPM
- Pressures up to 350 psi
- Temperatures up to 500°F
- 316 stainless steel or Alloy-C
- NPT/BSPT, ANSI 150# flanged and DIN PN16 flanged connections

**PULSATRON  
METERING PUMP**



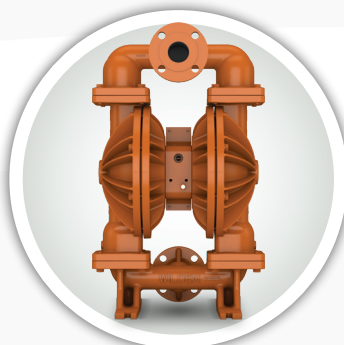
- Flows up to 600 GPD
- Pressures up to 300 psi
- Accuracy +/- 3% at max capacity
- Fin cooled enclosed solenoid
- Models: A Plus, C, C Plus, E, E-DC, E Plus, HV, MP and T7 Series

**T-MAG  
MAG DRIVE PUMP**



- Flows up to 215 GPM
- Pressures up to 56 psi
- 8 horsepower ratings available
- BSP thread, socket weld union and threaded flat face flange connections
- Heat dissipation technology design

**WILDEN  
DIAPHRAGM PUMP**



- Flows up to 320 GPM
- Pressures up to 125 psi
- Sizes available from 1/4" to 4"
- Max suction lift: 31.1' wet / 25' dry
- ADS options: Pro-Flo, Pro-Flo Shift, Accu-Flo and Turbo-Flo

# PROCESS EQUIPMENT & HOSE

## CONTINENTAL CHEM ONE



- For the transfer of a variety of industrial chemicals in pressure, gravity flow and/or suction service
- 3/4" to 4" I.D. options available
- Mod XLPE tube / EPDM cover
- Temperature range: -40°F to 250°F

## CONTINENTAL FABCHEM



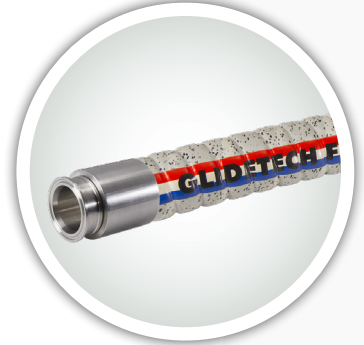
- Handles majority of common industrial chemicals in pressure, gravity flow and suction service
- 1/2" to 4" I.D. options available
- UHMWPE tube / EPDM cover
- Consistent 200 psi rating

## CONTINENTAL CONTI CHEM SUPERIOR



- Universal hose with seamless transparent FEP lining of Teflon resistant to all common chemicals
- 1/2" to 2" I.D. options available
- FEP non-conductive tube conforms to FDA and USP Class V standards

## GLIDETECH PTFE BIOTECH CHEM



- Suction and delivery hose for a variety of chemicals and solvents
- 1/2" to 3" I.D. options available
- Black conductive PTFE tube
- Consistent 235 psi rating
- Temperature range: -40°F to 302°F

## NOVAFLEX 4200BE / 4201BE EPDM CHEMICAL SUCTION



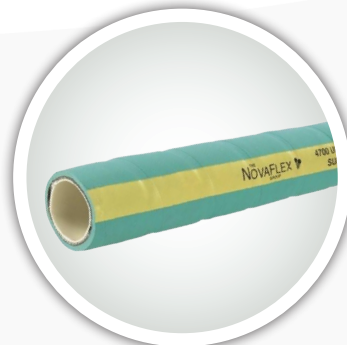
- Medium duty hose designed to meet the general needs of the industry
- 1" to 4" I.D. options available
- EPDM tube and cover construction
- Consistent 150 psi rating
- Temperature range: -30°F to 225°F

## NOVAFLEX 4600CF FEP CHEMICAL TRANSFER



- For the transfer of products that require a hose tube with the highest level of chemical resistance
- 1/2" to 3" I.D options available
- FEP Teflon-type tube / EPDM cover
- Pressures up to 500 psi

## NOVAFLEX 4700CU UHMW CHEMICAL S & D



- Designed for almost every common chemical used in the industry today
- 3/4" to 6" I.D. options available
- UHMW tube / EPDM cover
- Pressures up to 250 psi
- 4705CU Crush & Kink available

## UNI-CHEM / UNI-FLON CHEMICAL COMPOSITE HOSE



- For use in petroleum, chemical and oil transfer, petrochemical vapor recovery and tank truck delivery
- 1" to 10" I.D. options available
- Externally crimped dry seal fittings
- Temperature range: -40°F to 250°F

## FILTER TECHNOLOGY BAG FILTER HOUSINGS



- Flows from 35 GPM to 400 GPM
- 3/4" to 4" NPT or flange connection
- Housing materials in carbon, aluminum and stainless steel
- Models: #4-6, #4-12, #8-15, #8-30, #D-815, #D-830, #8815, #8830

## FLEX-A-SEAL MECHANICAL SEAL



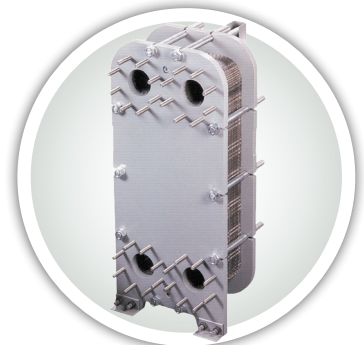
- Pressures up to 1,200 psi
- Speeds up to 10,000 SFPM
- Temperatures up to 800°F
- Single cartridge, dual cartridge, split cartridge and welded metal bellows
- Multiple elastomer options

## SHARPE PORTABLE MIXER



- Tank sizes up to 5,000 gallons
- Viscosities up to 15,000 cP
- Clamp, plate or flange mounted
- Direct drive, gear drive, thrifty and USDA approved stainless steel models available

## STANDARD XCHANGE HEAT EXCHANGER



- Up to 30,000 GPM
- Pressures up to 450 psi
- Heat transfer area 50,000 SQ FT
- Temperatures from -31°F to 338°F
- Double wall protection and free flow clog resistant options available

# Our Chemical LINE CARD

## Pump Manufacturers



## Hose & Fittings



## Filtration



Custom Chemical Solutions  
ENGINEERING, DESIGN & BUILD SERVICES



Need a custom skid or chemical system? Our experienced Engineering team will guide you through the process and offer solutions guaranteed to meet your needs.

## Process



*\*Not all products available in all locations\**

Wisconsin Corporate  
21365 Gateway Court  
Brookfield, WI 53045  
(262) 784-3340

Illinois Branch  
960 Oak Creek Drive  
Lombard, IL 60148  
(630) 782-6834

Indiana Branch  
8104 Woodland Drive  
Indianapolis, IN 46278  
(317) 875-6900

Michigan Branch  
41304 Concept Drive  
Plymouth, MI 48170  
(248) 476-7782

Ohio Branch  
4891 Van Epps Road  
Brooklyn Heights, OH 44131  
(216) 739-1600

**AndersonProcess.com · Sales@AndersonProcess.com**

Serving Illinois, Indiana, Iowa, Kentucky, Michigan, Ohio and Wisconsin