

LGV COUPLING INC

CATALOG



ABOUT US



LGV Coupling, Inc is a family oriented business with 30 years of experience in the coupling manufacturing industry. We specialize in the production of fittings, ferrules and sleeves that have been put to work for the concrete, food and beverage, chemical, petroleum, fire and other industries. We pride ourselves on superior service and premium quality products manufactured entirely in the U.S.A. No matter the quantity of the job, we can help you fit your application.

“Our many custom services include etching part numbers, specifications, and tracking of parts.”





TABLE OF CONTENTS

INTRODUCTION

What We Do.....	4
Our Mission.....	5
How to read this catalog.....	6
Understanding LGV Part Numbers.....	7

INDUSTRIAL

Crimp Line.....	26
Mandrel Expansion (Pull Through) Line.....	34
Weld-Ons.....	36

SANITARY

Crimp Line.....	8
Mandrel Expansion (Pull Through) Line.....	15
Finger Expansion Line.....	18
Wine and Brewery.....	23

OTHER

Custom work.....	41
Index of parts.....	42
Warranty.....	43
Terms and Conditions.....	43

WHAT WE DO

LGV Coupling specializes in manufacturing fitting, ferrules, and sleeves. We offer a large selection of parts available in internal expansion and external crimp. Our couplings range in size from 1" up to 4" in Groove End, Pacific Coast Thread, Butt-Weld, Bevel Seat (male or female), Tri-Clamp, NPT Pipe, and I-Line (male or female) ends. Our standard materials include 304 stainless steel and plated carbon steel, however we are able to work with other materials in order to fit our customer's needs. We specialize in custom machining to our customers specifications. When choosing LGV, keep in mind...

- We can manufacture parts to the spec of the customer's request.
- Our machinists have been in the business for over 30 years.
- We obtain quality raw materials and perform precision machining to meet all your coupling needs.
- We maintain great stock levels
- We have traceability on our parts

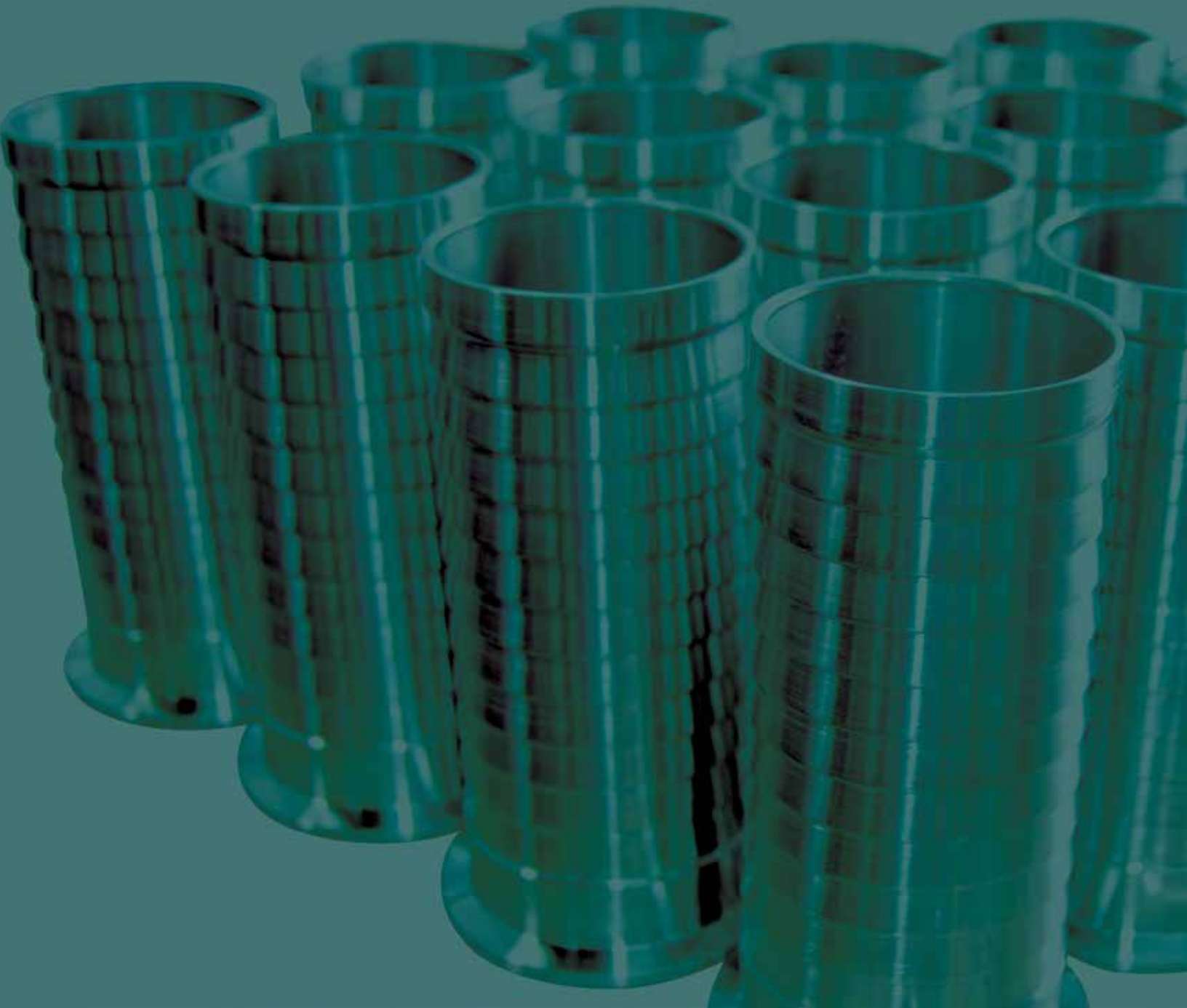
We serve the following industries:

- Fire
- Concrete
- Petroleum
- Chemical
- Wineries
- Marine
- Breweries
- Dairy
- Food-Processing
- Automotive
- Oil & Gas



OUR MISSION

Our goal is to establish long term relationships with our customers by offering high quality products and services as well as ensuring a high level of satisfaction with our outstanding performance. We are a reliable organization that ensures that our customers needs will be handled with professionalism, punctuality, and fairness.



HOW TO READ THIS CATALOG

Below you'll find a quick reference guide to reading our catalog. We have designed our catalog to provide the quickest and easiest way to find the parts you need. Having trouble finding a part? Take a look at the index located at the end of the catalog or just give us a call at 1-(888) 516-3315.

Major part headings and section names can be found at the top of each page.

SANITARY CRIMP

These parts can be custom ordered to fit your needs. Fittings machined with bumper space do not include bumpers. 316 Stainless Steel available upon request.

Sanitary Bevel Seat Female Crimp



Size	304 Stainless
1 1/2"	150SBVSFC
2"	200SBVSFC
2 1/2"	250SBVSFC
3"	300SBVSFC
4"	400SBVSFC

Bevel Seat Nut



Size	304 Stainless
1 1/2"	150BSN
2"	200BSN
2 1/2"	250BSN
3"	300BSN
4"	400BSN

Sanitary Bevel Seat Female Crimp w/ Bumper Space



Size	304 Stainless
1 1/2"	150SBVSFCB
2"	200SBVSFCB
2 1/2"	250SBVSFCB
3"	300SBVSFCB
4"	400SBVSFCB

Part numbers are listed in order of size.

Photos of selected parts will appear in the left column or in the vicinity of their part number listing.



Sanitary Bevel Seat Male Crimp

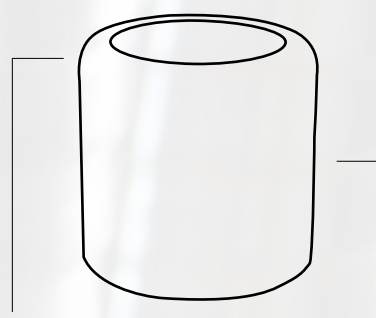
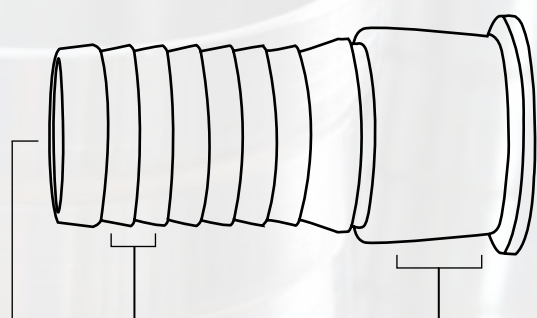
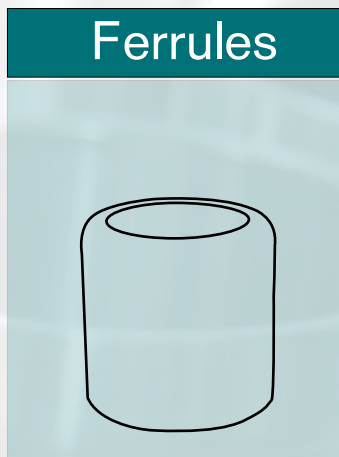
Size	304 Stainless
1 1/2"	150SBVSMC
2"	200SBVSMC
2 1/2"	250SBVSMC
3"	300SBVSMC
4"	400SBVSMC



Sanitary Tri-Clamp Crimp

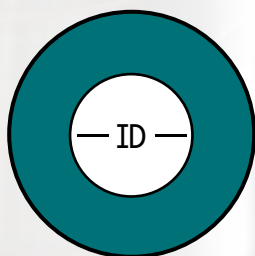
Size	304 Stainless
3/4"	075STCC
1"	100STCC
1 1/2"	150STCC
2"	200STCC
2 1/2"	250STCC
3"	300STCC
4"	400STCC

LGV PART NUMBERS



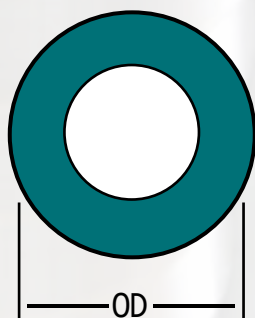
200	STCME
ID OF HOSE/OD OF SHANK	TYPE OF END & ASSEMBLY TYPE

200	220	SFIE
ID OF HOSE/OD OF SHANK	ID OF FERRULE/ SLEEVE	TYPE OF FERRULE/ SLEEVE & ASSEMBLY TYPE



INNER DIAMETER OF THE HOSE (ID)

This dimension will help determine the size of the hose shank that must be used.



OUTER DIAMETER OF THE HOSE (OD)

This dimension will help determine the size of the ferrule or sleeve that must be used.

For example, if the OD of the hose is 2.642, then the size of ferrule/ sleeve that should be used is:

- Internal Expansion: 200-221SFIE (2.656 ID)
- Crimp Ferrule: 200-222SCF (2.686 ID)
- Crimp Sleeve: 200-222SCS (2.686 ID)

Quick Note: When the OD of the hose is determined, match it with the closest ID of a ferrule.

- For internal expansion, add 1/32's more to choose the correct ferrule to use on the hose with the shank inside.
- For crimp, add 2/32's more to choose the correct ferrule or sleeve to use on the hose with the shank inside.

SANITARY CRIMP



CRIMP GUIDE

Please follow the steps below to obtain the crimping dimensions for LGV's couplings. Use STAMPED protocol before assembling hose for quality results, (Size, Temperature, Application, Material, Pressure, Ends, Delivery).

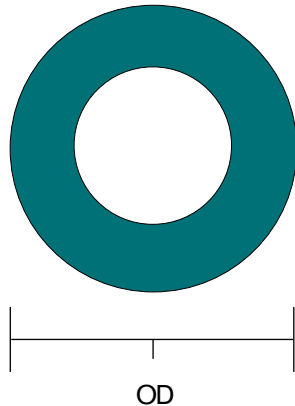


Image 1

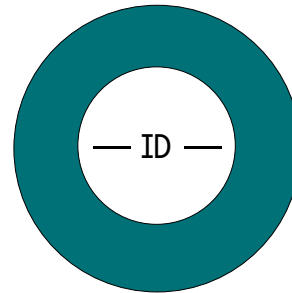


Image 2

1. Measure the Outer Diameter (OD) of the hose in "inch". (See Image 1)
2. Measure the Inner Diameter (ID) of the hose in "inch". (See Image 2)
3. Once dimensions of the hose are determined, match them with the correct ferrule size.
4. Use LGV Crimp Guide Sheet on our website: www.lgvcoupling.com under resources. (Due to different hose sizes and compression, make sure the fitting looks smooth inside the hose. If needed, you may have to crimp the ferrule a little more to have the smooth finish.)

This document can only be used for the parts manufactured by LGV Coupling.

- LGV follows Hose Safety Institute guidelines and recommends to test hose after crimping.
- Double check measurements before calculating.
- Make sure to cut hose end square.
- LGV is not responsible for all the other parts not manufactured at LGV Coupling.
- This document cannot be shared with any other person or company unless LGV Coupling approves the sharing.
- If you have any questions, please call us at 310-516-1534.

SANITARY CRIMP

These parts can be custom ordered to fit your needs. 316 Stainless Steel available upon request.

Sanitary Bevel Seat Female Crimp



Bevel Seat Nut



Sanitary Bevel Seat Female Crimp w/ Bumper Space *



Size	304 Stainless
1 1/2"	150SBVSFC
2"	200SBVSFC
2 1/2"	250SBVSFC
3"	300SBVSFC
4"	400SBVSFC

Size	304 Stainless
1 1/2"	150BSN
2"	200BSN
2 1/2"	250BSN
3"	300BSN
4"	400BSN

Size	304 Stainless
1 1/2"	150SBVSFCB
2"	200SBVSFCB
2 1/2"	250SBVSFCB
3"	300SBVSFCB
4"	400SBVSFCB



Sanitary Bevel Seat Male Crimp

Size	304 Stainless
1 1/2"	150BVSMC
2"	200BVSMC
2 1/2"	250BVSMC
3"	300BVSMC
4"	400BVSMC



Sanitary Tri-Clamp Crimp

Size	304 Stainless
3/4"	075STCC (w/ 1 1/2" TC End)
1"	100STCC (w/ 1 1/2" TC End)
1 1/2"	150STCC
2"	200STCC
2 1/2"	250STCC
3"	300STCC
4"	400STCC

* Fittings machined with bumper space do not include bumpers

SANITARY CRIMP

These parts can be custom ordered to fit your needs. 316 Stainless Steel available upon request.



Sanitary Tri-Clamp Crimp w/ Bumper Space *

Size	304 Stainless
1"	100STCCB (w/ 1 1/2" TC End)
1 1/2"	150STCCB
2"	200STCCB
2 1/2"	250STCCB
3"	300STCCB
4"	400STCCB



Sanitary Tube End Crimp

Size	304 Stainless
1"	100STEC
1 1/2"	150STEC
2"	200STEC
2 1/2"	250STEC
3"	300STEC
4"	400STEC



Sanitary Tube End Crimp w/ Bumper Space *

Size	304 Stainless
1"	100STECB
1 1/2"	150STECB
2"	200STECB
2 1/2"	250STECB
3"	300STECB
4"	400STECB



Sanitary Female I-Line Crimp

Size	304 Stainless
1 1/2"	150SFILC
2"	200SFILC
2 1/2"	250SFILC
3"	300SFILC
4"	400SFILC

* Fittings machined with bumper space do not include bumpers

SANITARY CRIMP

These parts can be custom ordered to fit your needs. 316 Stainless Steel available upon request.



Sanitary Male I-Line Crimp

Size	304 Stainless
1 1/2"	150SMILC
2"	200SMILC
2 1/2"	250SMILC
3"	300SMILC
4"	400SMILC



Sanitary John Perry Crimp

Size	304 Stainless
1 1/2"	150SJPC
2"	200SJPC
2 1/2"	250SJPC
3"	300SJPC
4"	400SJPC

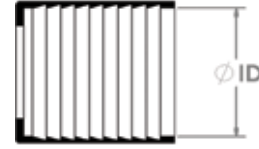


Sanitary Female Din Crimp

Size	304 Stainless
1 1/2"	150SFDIN40C
2"	200SFDIN50C
2 1/2"	250SFDIN65C
3"	300SFDIN80C

SANITARY CRIMP

Sanitary Crimp Ferrule



Size	304 Stainless	Inner Dimension	Size	304 Stainless	Inner Dimension
3/4"	075-102SCF	1.063	2"	200-230SCF	2.938
3/4"	075-104SCF	1.125	2"	200-300SCF	3.000
3/4"	075-106SCF	1.188	2"	200-302SCF	3.063
3/4"	075-108SCF	1.250	2"	200-304SCF	3.125
3/4"	075-110SCF	1.313	2 1/2"	250-300SCF	3.000
3/4"	075-112SCF	1.375	2 1/2"	250-302SCF	3.063
1"	100-112SCF	1.375	2 1/2"	250-304SCF	3.125
1"	100-114SCF	1.438	2 1/2"	250-306SCF	3.188
1"	100-116SCF	1.500	2 1/2"	250-308SCF	3.250
1"	100-118SCF	1.563	2 1/2"	250-310SCF	3.313
1"	100-120SCF	1.625	2 1/2"	250-312SCF	3.375
1"	100-122SCF	1.688	2 1/2"	250-314SCF	3.438
1"	100-124SCF	1.750	2 1/2"	250-316SCF	3.500
1"	100-126SCF	1.813	3"	300-318SCF	3.563
1"	100-128SCF	1.875	3"	300-320SCF	3.625
1 1/2"	150-128SCF	1.875	3"	300-322SCF	3.688
1 1/2"	150-130SCF	1.938	3"	300-324SCF	3.750
1 1/2"	150-200SCF	2.000	3"	300-326SCF	3.813
1 1/2"	150-202SCF	2.063	3"	300-328SCF	3.875
1 1/2"	150-204SCF	2.125	3"	300-330SCF	3.938
1 1/2"	150-206SCF	2.188	3"	300-400SCF	4.000
1 1/2"	150-208SCF	2.250	3"	300-402SCF	4.063
1 1/2"	150-210SCF	2.313	3"	300-404SCF	4.125
1 1/2"	150-212SCF	2.375	4"	400-418SCF	4.563
1 1/2"	150-214SCF	2.438	4"	400-420SCF	4.625
2"	200-214SCF	2.438	4"	400-422SCF	4.688
2"	200-216SCF	2.500	4"	400-424SCF	4.750
2"	200-218SCF	2.563	4"	400-426SCF	4.813
2"	200-220SCF	2.625	4"	400-428SCF	4.875
2"	200-222SCF	2.688	4"	400-430SCF	4.938
2"	200-224SCF	2.750	4"	400-500SCF	5.000
2"	200-226SCF	2.813	4"	400-502SCF	5.063
2"	200-228SCF	2.875	4"	400-504SCF	5.125

SANITARY CRIMP

Sanitary Crimp Sleeve



Size	304 Stainless	Inner Dimension
3/4"	075-102SCS	1.063
3/4"	075-104SCS	1.125
3/4"	075-106SCS	1.188
3/4"	075-108SCS	1.250
3/4"	075-110SCS	1.313
3/4"	075-112SCS	1.375
1"	100-112SCS	1.375
1"	100-114SCS	1.438
1"	100-116SCS	1.500
1"	100-118SCS	1.563
1"	100-120SCS	1.625
1"	100-122SCS	1.688
1"	100-124SCS	1.750
1"	100-126SCS	1.813
1"	100-128SCS	1.875
1 1/2"	150-128SCS	1.875
1 1/2"	150-130SCS	1.938
1 1/2"	150-200SCS	2.000
1 1/2"	150-202SCS	2.063
1 1/2"	150-204SCS	2.125
1 1/2"	150-206SCS	2.188
1 1/2"	150-208SCS	2.250
1 1/2"	150-210SCS	2.313
1 1/2"	150-212SCS	2.375
1 1/2"	150-214SCS	2.438
2"	200-212SCS	2.375
2"	200-214SCS	2.438
2"	200-216SCS	2.500
2"	200-218SCS	2.563
2"	200-220SCS	2.625
2"	200-222SCS	2.688
2"	200-224SCS	2.750
2"	200-226SCS	2.813

Size	304 Stainless	Inner Dimension
2"	200-228SCS	2.875
2"	200-230SCS	2.938
2"	200-300SCS	3.000
2"	200-302SCS	3.063
2 1/2"	250-300SCS	3.000
2 1/2"	250-302SCS	3.063
2 1/2"	250-304SCS	3.125
2 1/2"	250-306SCS	3.188
2 1/2"	250-308SCS	3.250
2 1/2"	250-310SCS	3.313
2 1/2"	250-312SCS	3.375
2 1/2"	250-314SCS	3.438
2 1/2"	250-316SCS	3.500
3"	300-318SCS	3.563
3"	300-320SCS	3.625
3"	300-322SCS	3.688
3"	300-324SCS	3.750
3"	300-326SCS	3.813
3"	300-328SCS	3.875
3"	300-330SCS	3.938
3"	300-400SCS	4.000
3"	300-402SCS	4.063
3"	300-404SCS	4.125
4"	400-418SCS	4.563
4"	400-420SCS	4.625
4"	400-422SCS	4.688
4"	400-424SCS	4.750
4"	400-426SCS	4.813
4"	400-428SCS	4.875
4"	400-430SCS	4.938
4"	400-500SCS	5.000
4"	400-502SCS	5.063
4"	400-504SCS	5.125

SANITARY MANDREL EXPANSION



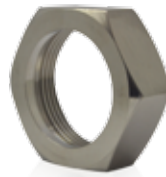
SANITARY MANDREL EXPANSION

These parts can be custom ordered to fit your needs. 316 Stainless Steel available upon request.

Sanitary Bevel Seal Female Mandrel Expansion



Bevel Seat Nut



Sanitary Bevel Seat Male Mandrel Expansion w/ Bumper Space *



Size	304 Stainless
1 1/2"	150SBVSFME
2"	200SBVSFME
2 1/2"	250SBVSFME
3"	300SBVSFME
4"	400SBVSFME

Size	304 Stainless
1 1/2"	150BSN
2"	200BSN
2 1/2"	250BSN
3"	300BSN
4"	400BSN

Size	304 Stainless
1 1/2"	150SBVSFMEB
2"	200SBVSFMEB
2 1/2"	250SBVSFMEB
3"	300SBVSFMEB
4"	400SBVSFMEB



Sanitary Bevel Seat Male Mandrel Expansion

Size	304 Stainless
1 1/2"	150SBVSMME
2"	200SBVSMME
2 1/2"	250SBVSMME
3"	350SBVSMME
4"	400SBVSMME



Sanitary Tri-Clamp Mandrel Expansion

Size	304 Stainless
1"	100STCME (w/ 1 1/2" TC End)
1 1/2"	150STCME
2"	200STCME
2 1/2"	250STCME
3"	300STCME
4"	400STCME

* Fittings machined with bumper space do not include bumpers

SANITARY MANDREL EXPANSION

These parts can be custom ordered to fit your needs. 316 Stainless Steel available upon request.



Sanitary Tri-Clamp Mandrel Expansion
w/ Bumper Space *

Size	304 Stainless
1"	100STCMEB (w/ 1 1/2" TC End)
1 1/2"	150STCMEB
2"	200STCMEB
2 1/2"	250STCMEB
3"	300STCMEB
4"	400STCMEB



Sanitary Female I-Line Mandrel Expansion

Size	304 Stainless
1 1/2"	150SFILME
2"	200SFILME
2 1/2"	250SFILME
3"	300SFILME
4"	400SFILME



Sanitary Male I-Line Mandrel Expansion

Size	304 Stainless
1 1/2"	150SMILME
2"	200SMILME
2 1/2"	250SMILME
3"	300SMILME
4"	400SMILME

* Fittings machined with bumper space do not include bumpers

SANITARY FINGER EXPANSION



SANITARY FINGER EXPANSION

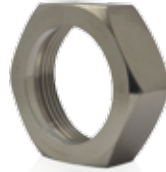
These parts can be custom ordered to fit your needs. 316 Stainless Steel available upon request.

Sanitary Bevel Seat Female Finger Expansion



Size	304 Stainless
1 1/2"	150SBVSFFE
2"	200SBVSFFE
2 1/2"	250SBVSFFE
3"	300SBVSFFE
4"	400SBVSFFE

Bevel Seat Nut



Size	304 Stainless
1 1/2"	150BSN
2"	200BSN
2 1/2"	250BSN
3"	300BSN
4"	400BSN

Sanitary Bevel Seat Female Finger Expansion w/ Bumper Space *



Size	304 Stainless
1 1/2"	150SBVSFFEB
2"	200SBVSFFEB
2 1/2"	250SBVSFFEB
3"	300SBVSFFEB
4"	400SBVSFFEB

Sanitary Bevel Seat Male Finger Expansion



Size	304 Stainless
1 1/2"	150SBVSMFE
2"	200SBVSMFE
2 1/2"	250SBVSMFE
3"	300SBVSMFE
4"	400SBVSMFE

Sanitary Tri-Clamp Finger Expansion



Size	304 Stainless
1 1/2"	150STCFE
2"	200STCFE
2 1/2"	250STCFE
3"	300STCFE
4"	400STCFE

* Fittings machined with bumper space do not include bumpers

SANITARY FINGER EXPANSION

These parts can be custom ordered to fit your needs. 316 Stainless Steel available upon request.



Sanitary Tube End Finger Expansion

Size	304 Stainless
1 1/2"	150STEFE
2"	200STEFE
2 1/2"	250STEFE
3"	300STEFE
4"	400STEFE



Sanitary Female I-Line Finger Expansion

Size	304 Stainless
1 1/2"	150SFILFE
2"	200SFILFE
2 1/2"	250SFILFE
3"	300SFILFE
4"	400SFILFE

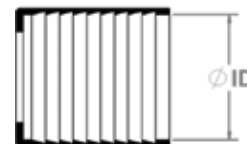


Sanitary Male I-Line Finger Expansion

Size	304 Stainless
1 1/2"	150SMILFE
2"	200SMILFE
2 1/2"	250SMILFE
3"	300SMILFE
4"	400SMILFE

SANITARY INTERNAL EXPANSION

Sanitary Ferrule Internal Expansion *

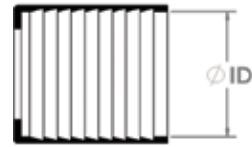


*This ferrule works with mandrel expansion and finger expansion fittings.

Size	304 Stainless	Inner Dimension	Size	304 Stainless	Inner Dimension
1"	100-112SFIE	1.375	2"	200-229SFIE	2.906
1"	100-114SFIE	1.438	2"	200-230SFIE	2.938
1"	100-116SFIE	1.500	2"	200-300SFIE	3.000
1"	100-117SFIE	1.531	2"	200-301SFIE	3.031
1"	100-118SFIE	1.563	2 1/2"	250-302SFIE	3.063
1"	100-120SFIE	1.625	2 1/2"	250-304SFIE	3.125
1"	100-122SFIE	1.688	2 1/2"	250-305SFIE	3.156
1"	100-124SFIE	1.750	2 1/2"	250-306SFIE	3.188
1 1/2"	150-200SFIE	2.000	2 1/2"	250-307SFIE	3.219
1 1/2"	150-201SFIE	2.031	2 1/2"	250-308SFIE	3.250
1 1/2"	150-202SFIE	2.063	2 1/2"	250-310SFIE	3.313
1 1/2"	150-203SFIE	2.093	2 1/2"	250-312SFIE	3.375
1 1/2"	150-204SFIE	2.125	2 1/2"	250-314SFIE	3.438
1 1/2"	150-205SFIE	2.156	2 1/2"	250-316SFIE	3.500
1 1/2"	150-206SFIE	2.188	3"	300-316SFIE	3.500
1 1/2"	150-207SFIE	2.219	3"	300-318SFIE	3.563
1 1/2"	150-208SFIE	2.250	3"	300-320SFIE	3.625
1 1/2"	150-210SFIE	2.313	3"	300-321SFIE	3.656
1 1/2"	150-212SFIE	2.375	3"	300-322SFIE	3.688
2"	200-212SFIE	2.375	3"	300-323SFIE	3.719
2"	200-214SFIE	2.438	3"	300-324SFIE	3.750
2"	200-215SFIE	2.469	3"	300-325SFIE	3.781
2"	200-216SFIE	2.500	3"	300-326SFIE	3.813
2"	200-217SFIE	2.531	3"	300-327SFIE	3.844
2"	200-218SFIE	2.563	3"	300-328SFIE	3.875
2"	200-219SFIE	2.593	3"	300-329SFIE	3.906
2"	200-220SFIE	2.625	3"	300-330SFIE	3.938
2"	200-221SFIE	2.656	3"	300-331SFIE	3.969
2"	200-222SFIE	2.688	3"	300-400SFIE	4.000
2"	200-223SFIE	2.719	3"	300-402SFIE	4.063
2"	200-224SFIE	2.750	3"	300-404SFIE	4.125
2"	200-225SFIE	2.781	3"	300-406SFIE	4.188
2"	200-226SFIE	2.813	4"	400-416SFIE	4.500
2"	200-227SFIE	2.844	4"	400-418SFIE	4.563
2"	200-228SFIE	2.875	4"	400-420SFIE	4.625

SANITARY INTERNAL EXPANSION

Sanitary Ferrule Internal Expansion *



Size	304 Stainless	Inner Dimension
4"	400-422SFIE	4.688
4"	400-423SFIE	4.719
4"	400-424SFIE	4.750
4"	400-425SFIE	4.781
4"	400-426SFIE	4.813
4"	400-427SFIE	4.844
4"	400-428SFIE	4.875
4"	400-429SFIE	4.906
4"	400-430SFIE	4.938
4"	400-431SFIE	4.969
4"	400-500SFIE	5.000
4"	400-502SFIE	5.063

*This ferrule works with mandrel expansion and finger expansion fittings.

WINE AND BREWERY



WINE AND BREWERY

These parts can be custom ordered to fit your needs. 316 Stainless Steel available upon request.

Sanitary Tri-Clamp Wine Stainless Steel



Size	304 Stainless
1 1/2"	150STCWSS
2"	200STCWSS
3"	300STCWSS

Female Pacific Coast Thread Wine Stainless Steel (PCT nut not included)



Size	304 Stainless
1 1/2"	150FPCTWSS
2"	200FPCTWSS
3"	300FPCTWSS

Sanitary Tri-Clamp Wine Stainless Steel w/ Bumper Space *



Size	304 Stainless
1 1/2"	150STCWSSB
2"	200STCWSSB
3"	300STCWSSB

Male Pacific Coast Thread Wine Stainless Steel



Size	304 Stainless
1 1/2"	150MPCTWSS
2"	200MPCTWSS
3"	300MPCTWSS



Wine Crimp Ferrule Stainless Steel

Size	304 Stainless	Inner Dimension
1 1/2"	150-204WCFSS	2.125
1 1/2"	150-206WCFSS	2.188
1 1/2"	150-208WCFSS	2.250
1 1/2"	150-210WCFSS	2.313
2"	200-222WCFSS	2.688
2"	200-224WCFSS	2.750
2"	200-226WCFSS	2.813
2"	200-228WCFSS	2.875
2"	200-230WCFSS	2.938
3"	300-324WCFSS	3.750
3"	300-326WCFSS	3.813
3"	300-328WCFSS	3.875
3"	300-330WCFSS	3.938
3"	300-400WCFSS	4.000
3"	300-402WCFSS	4.063
3"	300-404WCFSS	4.125



* Fittings machined with bumper space do not include bumpers

WINE AND BREWERY

These parts can be custom ordered to fit your needs. 316 Stainless Steel available upon request.



PCT Adapters

Part Number	Description
300MPCTTE	3" Male PCT by Tube-End
300FPCTTE	3" Female PCT by Tube-End
300MPCTTC	3" Male PCT by Tri-Clamp
400TE300MPCT	4" Tube-End by 3" Male PCT



Low Pressure Tri-Clamp Long

Part Number	304 Stainless
1"	100LPTCL (w/ 1 1/2" TC End)
1 1/2"	150LPTCL
2"	200LPTCL

External Crimp Sleeve Stainless Steel Long



Size	304 Stainless	Inner Dimension
1 1/2"	150-204ECSSSL	2.125
1 1/2"	150-206ECSSSL	2.188
1 1/2"	150-208ECSSSL	2.250
1 1/2"	150-210ECSSSL	2.313
2"	200-222ECSSSL	2.688
2"	200-224ECSSSL	2.750
2"	200-226ECSSSL	2.813
2"	200-228ECSSSL	2.875
2"	200-230ECSSSL	2.938
3"	300-324ECSSSL	3.750
3"	300-326ECSSSL	3.813
3"	300-328ECSSSL	3.875
3"	300-330ECSSSL	3.938
3"	300-400ECSSSL	4.000
3"	300-402ECSSSL	4.063
3"	300-404ECSSSL	4.125

INDUSTRIAL CRIMP



INDUSTRIAL CRIMP

Butt-Weld Pipe, Crimp Style



Size	304 Stainless	Carbon Steel
1 1/2"	150BWPCSS	150BWPCCS
2"	200BWPCSS	200BWPCCS
2 1/2"	250BWPCSS	250BWPCCS
3"	300BWPCSS	300BWPCCS
4"	400BWPCSS	400BWPCCS

Crimp Male Thread



Size	304 Stainless	Plated Steel
3/4"	075CMTSS	075CMTPS
1"	100CMTSS	100CMTPS
1 1/4"	125CMTSS	125CMTPS
1 1/2"	150CMTSS	150CMTPS
2"	200CMTSS	200CMTPS
2 1/2"	250CMTSS	250CMTPS
3"	300CMTSS	300CMTPS
4"	400CMTSS	400CMTPS

Crimp Victaulic / Groove-End



Size	304 Stainless	Plated Steel
1"	100VCSS	100VCPS
1 1/2"	150VCSS	150VCPS
2"	200VCSS	200VCPS
2 1/2"	250VCSS	250VCPS
3"	300VCSS	300VCPS
4"	400VCSS	400VCPS

King Combination Nipple



Size	304 Stainless	Plated Steel
1 1/2"	150KCNSS	150KCNPS
2"	200KCNSS	200KCNPS
3"	300KCNSS	300KCNPS

INDUSTRIAL CRIMP

External Crimp Ferrule



Size	304 Stainless	Plated Steel	Inner Dimension
3/4"	075-102ECFSS	075-102ECFPS	1.063
3/4"	075-104ECFSS	075-104ECFPS	1.125
3/4"	075-106ECFSS	075-106ECFPS	1.188
3/4"	075-108ECFSS	075-108ECFPS	1.250
3/4"	075-110ECFSS	075-110ECFPS	1.313
3/4"	075-112ECFSS	075-112ECFPS	1.375
1"	100-112ECFSS	100-112ECFPS	1.375
1"	100-114ECFSS	100-114ECFPS	1.438
1"	100-116ECFSS	100-116ECFPS	1.500
1"	100-118ECFSS	100-118ECFPS	1.563
1"	100-120ECFSS	100-120ECFPS	1.625
1"	100-122ECFSS	100-122ECFPS	1.688
1"	100-124ECFSS	100-124ECFPS	1.750
1"	100-126ECFSS	100-126ECFPS	1.813
1"	100-128ECFSS	100-128ECFPS	1.875
1 1/4"	125-120ECFSS	125-120ECFPS	1.625
1 1/4"	125-122ECFSS	125-122ECFPS	1.688
1 1/4"	125-124ECFSS	125-124ECFPS	1.750
1 1/4"	125-126ECFSS	125-126ECFPS	1.813
1 1/4"	125-128ECFSS	125-128ECFPS	1.875
1 1/4"	125-130ECFSS	125-130ECFPS	1.938
1 1/4"	125-200ECFSS	125-200ECFPS	2.000
1 1/2"	150-128ECFSS	150-128ECFPS	1.875
1 1/2"	150-130ECFSS	150-130ECFPS	1.938
1 1/2"	150-200ECFSS	150-200ECFPS	2.000
1 1/2"	150-202ECFSS	150-202ECFPS	2.063
1 1/2"	150-204ECFSS	150-204ECFPS	2.125
1 1/2"	150-206ECFSS	150-206ECFPS	2.188
1 1/2"	150-208ECFSS	150-208ECFPS	2.250
1 1/2"	150-210ECFSS	150-210ECFPS	2.313
1 1/2"	150-212ECFSS	150-212ECFPS	2.375
1 1/2"	150-214ECFSS	150-214ECFPS	2.438
2"	200-214ECFSS	200-214ECFPS	2.438

INDUSTRIAL CRIMP

External Crimp Ferrule



Size	304 Stainless	Plated Steel	Inner Dimension
2"	200-220ECFSS	200-220ECFPS	2.625
2"	200-222ECFSS	200-222ECFPS	2.688
2"	200-224ECFSS	200-224ECFPS	2.750
2"	200-226ECFSS	200-226ECFPS	2.813
2"	200-228ECFSS	200-228ECFPS	2.875
2"	200-230ECFSS	200-230ECFPS	2.938
2"	200-300ECFSS	200-300ECFPS	3.000
2"	200-302ECFSS	200-302ECFPS	3.063
2"	200-304ECFSS	200-304ECFPS	3.125
2 1/2"	250-300ECFSS	250-300ECFPS	3.000
2 1/2"	250-302ECFSS	250-302ECFPS	3.063
2 1/2"	250-304ECFSS	250-304ECFPS	3.125
2 1/2"	250-306ECFSS	250-306ECFPS	3.188
2 1/2"	250-308ECFSS	250-308ECFPS	3.250
2 1/2"	250-310ECFSS	250-310ECFPS	3.313
2 1/2"	250-312ECFSS	250-312ECFPS	3.375
2 1/2"	250-314ECFSS	250-314ECFPS	3.438
2 1/2"	250-316ECFSS	250-316ECFPS	3.500
3"	300-312ECFSS	300-312ECFPS	3.375
3"	300-314ECFSS	300-314ECFPS	3.438
3"	300-316ECFSS	300-316ECFPS	3.500
3"	300-318ECFSS	300-318ECFPS	3.563
3"	300-320ECFSS	300-320ECFPS	3.625
3"	300-322ECFSS	300-322ECFPS	3.688
3"	300-324ECFSS	300-324ECFPS	3.750
3"	300-326ECFSS	300-326ECFPS	3.813
3"	300-328ECFSS	300-328ECFPS	3.875
3"	300-330ECFSS	300-330ECFPS	3.938
3"	300-400ECFSS	300-400ECFPS	4.000
3"	300-402ECFSS	300-402ECFPS	4.063
3"	300-404ECFSS	300-404ECFPS	4.125
4"	400-412ECFSS	400-412ECFPS	4.375
4"	400-414ECFSS	400-414ECFPS	4.438

INDUSTRIAL CRIMP

External Crimp Ferrule

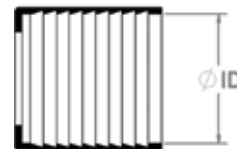


Size	304 Stainless	Plated Steel	Inner Dimension
4"	400-416ECFSS	400-416ECFPS	4.500
4"	400-418ECFSS	400-418ECFPS	4.563
4"	400-420ECFSS	400-420ECFPS	4.625
4"	400-422ECFSS	400-422ECFPS	4.688
4"	400-424ECFSS	400-424ECFPS	4.750
4"	400-426ECFSS	400-426ECFPS	4.813
4"	400-428ECFSS	400-428ECFPS	4.875
4"	400-430ECFSS	400-430ECFPS	4.938
4"	400-500ECFSS	400-500ECFPS	5.000
4"	400-502ECFSS	400-502ECFPS	5.063
4"	400-504ECFSS	400-504ECFPS	5.125
4"	N/A	400-412ECFPSH*	4.375
4"	N/A	400-414ECFPSH*	4.438
4"	N/A	400-416ECFPSH*	4.500
4"	N/A	400-418ECFPSH*	4.563
4"	N/A	400-420ECFPSH*	4.625
4"	N/A	400-422ECFPSH*	4.688
4"	N/A	400-424ECFPSH*	4.750
4"	N/A	400-426ECFPSH*	4.813
4"	N/A	400-428ECFPSH*	4.875
4"	N/A	400-430ECFPSH*	4.938
4"	N/A	400-500ECFPSH*	5.000
4"	N/A	400-502ECFPSH*	5.063

*Part numbers ending with "H" are **HEAVY WALL** ferrules. Wall is thicker than our standard. For more information, please give us a call.

INDUSTRIAL CRIMP

External Crimp Heavy Duty Ferrule



Size	304 Stainless	Plated Steel	Inner Dimension
1"	100-118ECFHDSS	100-118ECFHDPS	1.563
1"	100-120ECFHDSS	100-120ECFHDPS	1.625
1"	100-122ECFHDSS	100-122ECFHDPS	1.688
1 1/2"	150-202ECFHDSS	150-202ECFHDPS	2.063
1 1/2"	150-204ECFHDSS	150-204ECFHDPS	2.125
1 1/2"	150-206ECFHDSS	150-206ECFHDPS	2.188
1 1/2"	150-208ECFHDSS	150-208ECFHDPS	2.250
1 1/2"	150-210ECFHDSS	150-210ECFHDPS	2.313
2"	200-222ECFHDSS	200-222ECFHDPS	2.688
2"	200-224ECFHDSS	200-224ECFHDPS	2.750
2"	200-226ECFHDSS	200-226ECFHDPS	2.813
2"	200-228ECFHDSS	200-228ECFHDPS	2.875
2"	200-230ECFHDSS	200-230ECFHDPS	2.938
2 1/2"	250-306ECFHDSS	250-306ECFHDPS	3.188
2 1/2"	250-308ECFHDSS	250-308ECFHDPS	3.250
2 1/2"	250-310ECFHDSS	250-310ECFHDPS	3.313
3"	300-322ECFHDSS	300-322ECFHDPS	3.688
3"	300-324ECFHDSS	300-324ECFHDPS	3.750
3"	300-326ECFHDSS	300-326ECFHDPS	3.813
3"	300-328ECFHDSS	300-328ECFHDPS	3.875
4"	400-422ECFHDSS	400-422ECFHDPS	4.688
4"	400-424ECFHDSS	400-424ECFHDPS	4.750
4"	400-426ECFHDSS	400-426ECFHDPS	4.813
4"	400-428ECFHDSS	400-428ECFHDPS	4.875

INDUSTRIAL CRIMP

External Crimp Sleeve



Size	304 Stainless	Plated Steel	Inner Dimension
3/4"	075-102ECSSS	075-102ECSPS	1.063
3/4"	075-104ECSSS	075-104ECSPS	1.125
3/4"	075-106ECSSS	075-106ECSPS	1.188
3/4"	075-108ECSSS	075-108ECSPS	1.250
3/4"	075-110ECSSS	075-110ECSPS	1.313
3/4"	075-112ECSSS	075-112ECSPS	1.375
1"	100-112ECSSS	100-112ECSPS	1.375
1"	100-114ECSSS	100-114ECSPS	1.438
1"	100-116ECSSS	100-116ECSPS	1.500
1"	100-118ECSSS	100-118ECSPS	1.563
1"	100-120ECSSS	100-120ECSPS	1.625
1"	100-122ECSSS	100-122ECSPS	1.688
1"	100-124ECSSS	100-124ECSPS	1.750
1"	100-126ECSSS	100-126ECSPS	1.813
1"	100-128ECSSS	100-128ECSPS	1.875
1 1/4"	125-122ECSSS	125-122ECSPS	1.688
1 1/4"	125-124ECSSS	125-124ECSPS	1.750
1 1/4"	125-126ECSSS	125-126ECSPS	1.813
1 1/4"	125-128ECSSS	125-128ECSPS	1.875
1 1/4"	125-130ECSSS	125-130ECSPS	1.938
1 1/4"	125-200ECSSS	125-200ECSPS	2.000
1 1/2"	150-128ECSSS	150-128ECSPS	1.875
1 1/2"	150-130ECSSS	150-130ECSPS	1.938
1 1/2"	150-200ECSSS	150-200ECSPS	2.000
1 1/2"	150-202ECSSS	150-202ECSPS	2.063
1 1/2"	150-204ECSSS	150-204ECSPS	2.125
1 1/2"	150-206ECSSS	150-206ECSPS	2.188
1 1/2"	150-208ECSSS	150-208ECSPS	2.250
1 1/2"	150-210ECSSS	150-210ECSPS	2.313
1 1/2"	150-212ECSSS	150-212ECSPS	2.375
1 1/2"	150-214ECSSS	150-214ECSPS	2.438
2"	200-212ECSSS	200-212ECSPS	2.375
2"	200-214ECFSS	200-214ECFPS	2.438

INDUSTRIAL CRIMP

External Crimp Sleeve



Size	304 Stainless	Plated Steel	Inner Dimension
2"	200-216ECSSS	200-216ECSPS	2.500
2"	200-218ECSSS	200-218ECSPS	2.563
2"	200-220ECSSS	200-220ECSPS	2.625
2"	200-222ECSSS	200-222ECSPS	2.688
2"	200-224ECSSS	200-224ECSPS	2.750
2"	200-226ECSSS	200-226ECSPS	2.813
2"	200-228ECSSS	200-228ECSPS	2.875
2"	200-230ECSSS	200-230ECSPS	2.938
2"	200-300ECSSS	200-300ECSPS	3.000
2"	200-302ECSSS	200-302ECSPS	3.063
2 1/2"	250-228ECSSS	250-228ECSPS	2.875
2 1/2"	250-230ECSSS	250-230ECSPS	2.938
2 1/2"	250-300ECSSS	250-300ECSPS	3.000
2 1/2"	250-302ECSSS	250-302ECSPS	3.063
2 1/2"	250-304ECSSS	250-304ECSPS	3.125
2 1/2"	250-306ECSSS	250-306ECSPS	3.188
2 1/2"	250-308ECSSS	250-308ECSPS	3.250
2 1/2"	250-310ECSSS	250-310ECSPS	3.313
2 1/2"	250-312ECSSS	250-312ECSPS	3.375
2 1/2"	250-314ECSSS	250-314ECSPS	3.438
2 1/2"	250-316ECSSS	250-316ECSPS	3.500
2 1/2"	250-318ECSSS	250-318ECSPS	3.563
2 1/2"	250-320ECSSS	250-320ECSPS	3.625
2 1/2"	250-322ECSSS	250-322ECSPS	3.688
2 1/2"	250-324ECSSS	250-324ECSPS	3.750
3"	300-312ECSSS	300-312ECSPS	3.375
3"	300-314ECSSS	300-314ECSPS	3.438
3"	300-316ECSSS	300-316ECSPS	3.500
3"	300-318ECSSS	300-318ECSPS	3.563
3"	300-320ECSSS	300-320ECSPS	3.625
3"	300-322ECSSS	300-322ECSPS	3.688
3"	300-324ECSSS	300-324ECSPS	3.750
3"	300-326ECSSS	300-326ECSPS	3.813

INDUSTRIAL CRIMP

External Crimp Sleeve



Size	304 Stainless	Plated Steel	Inner Dimension
3"	300-328ECSSS	300-328ECSPS	3.875
3"	300-330ECSSS	300-330ECSPS	3.938
3"	300-400ECSSS	300-400ECSPS	4.000
3"	300-402ECSSS	300-402ECSPS	4.063
3"	300-404ECSSS	300-404ECSPS	4.125
4"	400-412ECSSS	400-412ECSPS	4.375
4"	400-414ECSSS	400-414ECSPS	4.438
4"	400-416ECSSS	400-416ECSPS	4.500
4"	400-418ECSSS	400-418ECSPS	4.563
4"	400-420ECSSS	400-420ECSSS	4.625
4"	400-422ECSSS	400-422ECSPS	4.688
4"	400-424ECSSS	400-424ECSPS	4.750
4"	400-426ECSSS	400-426ECSPS	4.813
4"	400-428ECSSS	400-428ECSPS	4.875
4"	400-430ECSSS	400-430ECSPS	4.938
4"	400-500ECSSS	400-500ECSPS	5.000
4"	400-502ECSSS	400-502ECSPS	5.063
4"	N/A	400-412ECSPSH*	4.375
4"	N/A	400-414ECSPSH*	4.438
4"	N/A	400-416ECSPSH*	4.500
4"	N/A	400-418ECSPSH*	4.563
4"	N/A	400-420ECSPSH*	4.625
4"	N/A	400-422ECSPSH*	4.688
4"	N/A	400-424ECSPSH*	4.750
4"	N/A	400-426ECSPSH*	4.813
4"	N/A	400-428ECSPSH*	4.875
4"	N/A	400-430ECSPSH*	4.938
4"	N/A	400-500ECSPSH*	5.000
4"	N/A	400-502ECSPSH*	5.063

*Part numbers ending with "H" are **HEAVY WALL** ferrules. Wall is thicker than our standard. For more information, please give us a call.

INDUSTRIAL INTERNAL EXPANSION



Butt-Weld Pipe, Mandrel Expansion



Size	304 Stainless	Plated Steel
1 1/2"	150BWMESS	150BWMECS
2"	200BWMESS	200BWMECS
2 1/2"	250BWMESS	250BWMECS
3"	300BWMESS	300BWMECS
4"	400BWMESS	400BWMECS

Male Thread Mandrel Expansion



Size	304 Stainless	Plated Steel
1"	100MTMESS	100MTMEPS
1 1/4"	125MTMESS	125MTMEPS
1 1/2"	150MTMESS	150MTMEPS
2"	200MTMESS	200MTMEPS
2 1/2"	250MTMESS	250MTMEPS
3"	300MTMESS	300MTMEPS
4"	400MTMESS	400MTMEPS

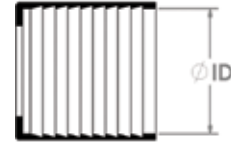
Mandrel Expansion Victaulic



Size	304 Stainless	Plated Steel
1"	100VMESS	100VMEPS
1 1/2"	150VMESS	150VMEPS
2"	200VMESS	200VMEPS
2 1/2"	250VMESS	250VMEPS
3"	300VMESS	300VMEPS
4"	300VMESS	400VMEPS

INDUSTRIAL INTERNAL EXPANSION

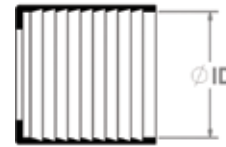
Mandrel Expansion Ferrule



Size	304 Stainless Steel	Plated Steel	Inner Dimension
1"	100-112MEFSS	100-112MEFPS	1.375
1"	100-114MEFSS	100-114MEFPS	1.438
1"	100-116MEFSS	100-116MEFPS	1.500
1"	100-117MEFSS	100-117MEFPS	1.531
1"	100-118MEFSS	100-118MEFPS	1.563
1"	100-120MEFSS	100-120MEFPS	1.625
1"	100-122MEFSS	100-122MEFPS	1.688
1"	100-124MEFSS	100-124MEFPS	1.750
1 1/4"	125-124MEFSS	125-124MEFPS	1.750
1 1/4"	125-126MEFSS	125-126MEFPS	1.813
1 1/4"	125-127MEFSS	125-127MEFPS	1.844
1 1/4"	125-128MEFSS	125-128MEFPS	1.875
1 1/4"	125-129MEFSS	125-129MEFPS	1.906
1 1/4"	125-200MEFSS	125-200MEFPS	2.000
1 1/2"	150-200MEFSS	150-200MEFPS	2.000
1 1/2"	150-201MEFSS	150-201MEFPS	2.031
1 1/2"	150-202MEFSS	150-202MEFPS	2.063
1 1/2"	150-203MEFSS	150-203MEFPS	2.093
1 1/2"	150-204MEFSS	150-204MEFPS	2.125
1 1/2"	150-205MEFSS	150-205MEFPS	2.156
1 1/2"	150-206MEFSS	150-206MEFPS	2.188
1 1/2"	150-207MEFSS	150-207MEFPS	2.218
1 1/2"	150-208MEFSS	150-208MEFPS	2.250
1 1/2"	150-210MEFSS	150-210MEFPS	2.313
1 1/2"	150-212MEFSS	150-212MEFPS	2.375
2"	200-212MEFSS	200-212MEFPS	2.375
2"	200-214MEFSS	200-214MEFPS	2.438
2"	200-215MEFSS	200-215MEFPS	2.469
2"	200-216MEFSS	200-216MEFPS	2.500
2"	200-217MEFSS	200-217MEFPS	2.531
2"	200-218MEFSS	200-218MEFPS	2.593

INDUSTRIAL INTERNAL EXPANSION

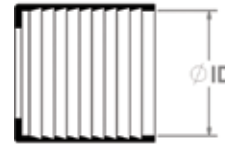
Mandrel Expansion Ferrule



Size	304 Stainless Steel	Plated Steel	Inner Dimension
2"	200-219MEFSS	200-219MEFPS	2.539
2"	200-220MEFSS	200-220MEFPS	2.625
2"	200-221MEFSS	200-221MEFPS	2.656
2"	200-222MEFSS	200-222MEFPS	2.688
2"	200-223MEFSS	200-223MEFPS	2.719
2"	200-224MEFSS	200-224MEFPS	2.750
2"	200-225MEFSS	200-225MEFPS	2.781
2"	200-226MEFSS	200-226MEFPS	2.813
2"	200-227MEFSS	200-227MEFPS	2.844
2"	200-228MEFSS	200-228MEFPS	2.875
2"	200-229MEFSS	200-229MEFPS	2.906
2"	200-230MEFSS	200-230MEFPS	2.938
2"	200-300MEFSS	200-300MEFPS	3.000
2"	200-301MEFSS	200-301MEFPS	3.031
2 1/2"	250-300MEFSS	250-300MEFPS	3.000
2 1/2"	250-302MEFSS	250-302MEFPS	3.063
2 1/2"	250-304MEFSS	250-304MEFPS	3.125
2 1/2"	250-305MEFSS	250-305MEFPS	3.156
2 1/2"	250-306MEFSS	250-306MEFPS	3.188
2 1/2"	250-307MEFSS	250-307MEFPS	3.218
2 1/2"	250-308MEFSS	250-308MEFPS	3.250
2 1/2"	250-309MEFSS	250-309MEFPS	3.281
2 1/2"	250-310MEFSS	250-310MEFPS	3.313
2 1/2"	250-312MEFSS	250-312MEFPS	3.375
2 1/2"	250-314MEFSS	250-314MEFPS	3.438
2 1/2"	250-316MEFSS	250-316MEFPS	3.500
3"	300-316MEFSS	300-316MEFPS	3.500
3"	300-318MEFSS	300-318MEFPS	3.563
3"	300-320MEFSS	300-320MEFPS	3.625
3"	300-322MEFSS	300-322MEFPS	3.688
3"	300-323MEFSS	300-323MEFPS	3.719

INDUSTRIAL INTERNAL EXPANSION

Mandrel Expansion Ferrule



Size	304 Stainless Steel	Plated Steel	Inner Dimension
3"	300-324MEFSS	300-324MEFPS	3.750
3"	300-325MEFSS	300-325MEFPS	3.781
3"	300-326MEFSS	300-326MEFPS	3.813
3"	300-327MEFSS	300-327MEFPS	3.844
3"	300-328MEFSS	300-328MEFPS	3.875
3"	300-329MEFSS	300-329MEFPS	3.906
3"	300-330MEFSS	300-330MEFPS	3.938
3"	300-331MEFSS	300-331MEFPS	3.968
3"	300-400MEFSS	300-400MEFPS	4.000
3"	300-400MEFSS	300-402MEFPS	4.063
3"	300-404MEFSS	300-404MEFPS	4.125
3"	300-406MEFSS	300-406MEFPS	4.188
4"	400-416MEFSS	400-416MEFPS	4.500
4"	400-418MEFSS	400-418MEFPS	4.563
4"	400-420MEFSS	400-420MEFPS	4.625
4"	400-422MEFSS	400-422MEFPS	4.688
4"	400-423MEFSS	400-423MEFPS	4.718
4"	400-424MEFSS	400-424MEFPS	4.750
4"	400-425MEFSS	400-425MEFPS	4.781
4"	400-426MEFSS	400-426MEFPS	4.813
4"	400-427MEFSS	400-427MEFPS	4.844
4"	400-428MEFSS	400-428MEFPS	4.875
4"	400-429MEFSS	400-429MEFPS	4.906
4"	400-430MEFSS	400-430MEFPS	4.938
4"	400-431MEFSS	400-431MEFPS	4.969
4"	400-500MEFSS	400-500MEFPS	5.000
4"	400-502MEFSS	400-502MEFPS	5.063

Weld Groove-End



Size	304 Stainless	Carbon Steel
3/4"	075WGECS	075WGECS
1"	100WGECS	100WGECS
1 1/2"	150WGECS	150WGECS
2"	200WGECS	200WGECS
2 1/2"	250WGECS	250WGECS
3"	300WGECS	300WGECS
4"	400WGECS	400WGECS

Weld NPT



Size	304 Stainless	Carbon Steel
3/4"	075WNPTCS	075WNPTCS
1"	100WNPTCS	100WNPTCS
1 1/2"	150WNPTCS	150WNPTCS
2"	200WNPTCS	200WNPTCS
2 1/2"	250WNPTCS	250WNPTCS
3"	300WNPTCS	300WNPTCS
4"	400WNPTCS	400WNPTCS

CUSTOM

“Our many custom services include etching part numbers, specifications, and tracking of parts.”
Trust us to design, create and bring your ideas to life!
Call us for more information.



INDEX OF PARTS

FITTINGS

Butt - Weld, Pipe Crimp Carbon Steel (BWPCCS).....	27
Butt - Weld, Pipe Crimp Stainless Steel (BWPCSS)	27
Butt - Weld, Mandrel Expansion Carbon Steel (BWMECS)	36
Butt - Weld, Mandrel Expansion Stainless Steel (BWMESS)	36
Crimp Male Thread Plated Steel (CMTPS)	27
Crimp Male Thread Stainless Steel (CMTSS)	27
Female Pacific Coast Thread Wine Stainless Steel (FPCTWSS)	24
King Combination Nipple Plated Steel (KCNPS)	27
King Combination Nipple Stainless Steel (KCNSS)	27
Low Pressure Tri-Clamp Long (LPTCL)	25
Male Pacific Coast Thread Wine Stainless Steel (MPCTWSS)	24
Male Thread Mandrel Expansion Plated Steel (MTMEPS)	36
Male Thread Mandrel Expansion Stainless Steel (MTMESS)	36
Sanitary Bevel Seat Female Crimp (SBVSFC)	10
Sanitary Bevel Seat Female Crimp w/ Bumper Space (SBVSFCB).....	10
Sanitary Bevel Seat Female Finger Expansion (SBVSFFE).....	19
Sanitary Bevel Seat Female Finger Expansion w/ Bumper Space (SBVSFFEB).....	19
Sanitary Bevel Seat Female Mandrel Expansion (SBVSFME).....	16
Sanitary Bevel Seat Female Mandrel Expansion w/ Bumper Space (SBVSFMEB).....	16
Sanitary Bevel Seat Male Crimp (SBVSMC).....	10
Sanitary Bevel Seat Male Finger Expansion (SBVSMFE).....	19
Sanitary Bevel Seat Male Mandrel Expansion (SBVSMME)	16
Sanitary Din Fitting Crimp (SDINXXC).....	12
Sanitary Female I-Line Crimp (SFILC).....	11
Sanitary Female I-Line Finger Expansion (SFILFE).....	20
Sanitary Female I-Line Mandrel Expansion (SFILME).....	17
Sanitary John Perry Crimp (SJPC).....	12
Sanitary Male I-Line Crimp (SMILC).....	12
Sanitary Male I-Line Finger Expansion (SMILFE).....	20
Sanitary Male I-Line Mandrel Expansion (SMILME)	17
Sanitary Tri-Clover Crimp (STCC).....	10
Sanitary Tri-Clover Crimp w/ Bumper Space (STCCB).....	11
Sanitary Tri-Clover Finger Expansion (STCFE)	19
Sanitary Tri-Clover Mandrel Expansion (STCME).....	16
Sanitary Tri-Clover Mandrel Expansion w/ Bumper Space (STCMEB).....	17
Sanitary Tri-Clover Wine Stainless Steel (STCWSS).....	24
Sanitary Tri-Clover Wine Stainless Steel w/ Bumper Space (STCWSSB).....	24
Sanitary Tube End Crimp (STEC).....	11
Sanitary Tube End Crimp w/ Bumper Space (STECB).....	11
Sanitary Tube End Finger Expansion (STEFE).....	20
Victaulic Crimp Plated Steel (VCPS).....	27
Victaulic Crimp Stainless Steel (VCSS)	27
Victaulic Mandrel Expansion Plated Steel (VMEPS).....	36
Victaulic Mandrel Expansion Stainless Steel (VMESS).....	36

FERRULES

External Crimp Ferrule Plated Steel (ECFPS).....	29
External Crimp Ferrule Plated Steel Heavy Wall (ECFPSH).....	30
External Crimp Ferrule Stainless Steel (ECFSS).....	29
External Heavy Duty Crimp Ferrule Plated Steel (ECFHDPS).....	31
External Heavy Duty Crimp Ferrule Stainless Steel (ECFHDSS).....	31
Mandrel Expansion Ferrule Plated Steel (MEFPS).....	37
Mandrel Expansion Ferrule Stainless Steel (MEFSS).....	37
Sanitary Crimp Ferrule (SCF)	13
Sanitary Crimp Ferrule (SFIE)	21
Sanitary Crimp Ferrule (WCFSS)	24

SLEEVES

External Crimp Sleeve Plated Steel (ECSPS).....	32
External Crimp Sleeve Plated Steel Heavy Wall (ECSPSH).....	34
External Crimp Sleeve Stainless Steel (ECSSS).....	32
External Crimp Sleeve Stainless Steel Long (ECSSSL).....	25

PCT ADAPTERS

3" Male PCT by Tube End (MPCTTE).....	25
3" Female PCT by Tube End (FPCTTE).....	25
4" Tube End by 3" Male PCT (400TE300MPCT)	25
3" Male PCT by Tri-Clover (MPCTTC).....	25

WELD-ONS

Weld Groove End Carbon Steel (WGECS).....	40
Weld Groove End Stainless Steel (WGESS)	40
Weld NPT Carbon Steel (WNPTCS)	40
Weld NPT Stainless Steel (WNPTSS)	40

ACCESSORIES

Bevel Seat Hex Nut (BSN).....	10,16,19
-------------------------------	----------

Terms and Conditions

- Minimum purchase order is of \$50.
- Contact us for more information on eligibility for free shipping
- Returns or Exchanges must be done within 90 days of invoice date (25% Restocking Fee may apply)
- Limited warranty, if used properly and assembled with LGV products, is for one year.

Warranty

LGV Coupling, Inc (LGV) is the sole manufacturer of the LGV product line shown in this catalog. No outside sources are used in the manufacturing of the products herein. LGV warrants the product sold only if the product is used under the correct specifications and intended use. The product can be replaced or reworked by LGV if it is determined that the product did not perform as expected and LGV is notified of the defective product within 30 days of receipt.

Custom ordered products are not eligible for the warranty. Often times parts are made to order and as such, in the case that a customer incorrectly specifies a part, this warranty is void. LGV will not accept the return of products in the event that the quantity ordered exceeds the quantity required by the customer. Once the manufacturing process has begun on an order, the order may not be cancelled or modified due to the customer's incorrect specification of the product.



Contact Us



Tel: 1(888) 516-3315
Fax: 1(310) 516-1826



customerservice@lgvcoupling.com
www.LGVcoupling.com



1433 W. El Segundo Blvd
Compton, CA 90222