

H™/J™/K™ Series

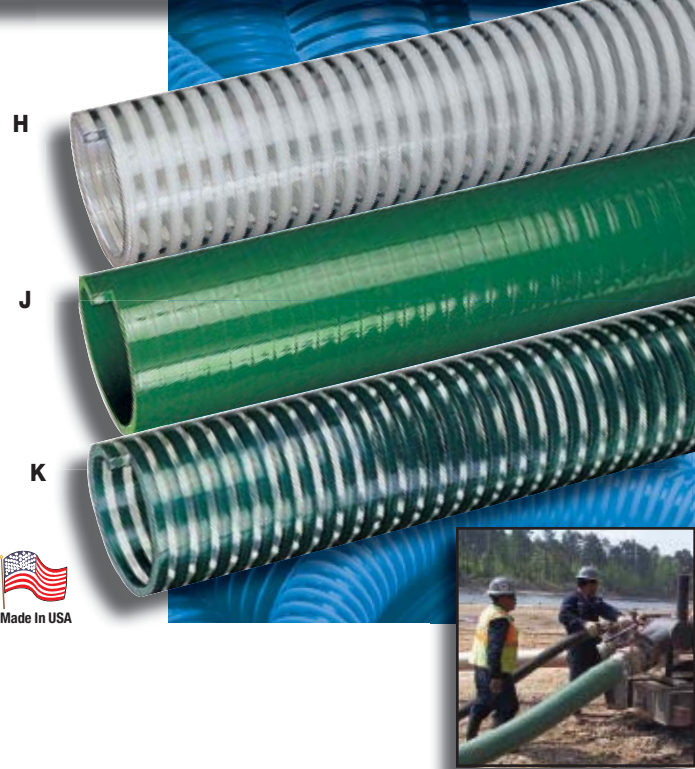
Standard Duty PVC Suction Hose

General Applications:

- Agricultural liquid fertilizer
- Air seeder lines
- Drain lines
- Irrigation lines
- Mining applications (MSHA)
- Pumps, rental and construction dewatering
- Pumps, trash
- Rock dusting
- Water suction – standard duty

Construction: PVC tube with rigid PVC helix.

Service Temperature: -4°F (-20°C) to 150°F (+65°C)*



Features and Advantages:

- **Transparent Construction (H & K Series only)** – “See-the-flow.” Allows for visual confirmation of material flow.
- **MSHA⁽⁰⁹⁾ Approved (J Series only)** – Approved by the Mine Safety and Health Administration for flame-resistance for use in underground mines as water transfer hose.
- **Smooth Outer Cover (Sizes 3/4” – 5”)** – Provides increased pressure rating and smooth surface for banding.
- **Convuluted Outer Cover (Sizes 6” & 8”)** – Provides increased hose flexibility.

Nominal Specifications

Series	ID (in.)	ID (mm)	OD (in.)	OD (mm)	Working Pressure (psi)		Vacuum Rating (in. Hg)		Approx. Bending Radius (in. @ 68°F)	Standard Length (ft.)	Weight (lbs./ft.)
					68°F	104°F	68°F	104°F			
H/J/K075	3/4	19.0	1.01	25.6	110	70	28	26	3	100	0.19
H/J/K100	1	25.4	1.26	32.0	85	60	28	26	3	100	0.26
H/J/K125	1 1/4	31.7	1.56	39.6	85	60	28	24	4	100	0.35
H/J/K150	1 1/2	38.1	1.83	46.5	70	50	28	24	5	100	0.48
H/J/K200	2	50.8	2.32	59.0	65	45	28	24	7	100	0.66
H/J/K250	2 1/2	63.5	2.87	73.0	65	45	28	24	8	100	0.87
H/J/K300	3	76.2	3.43	87.0	60	40	28	22	10	100	1.24
H/J/K400	4	101.6	4.50	114.7	50	35	28	22	15	100	1.85
H500	5	127.0	5.58	141.3	45	30	28	24	22	100/20	2.42
H/J/K600	6	152.4	6.75	171.4	40	25	28	20	30	100/20	3.39
H/J/K800	8	203.2	8.86	225.0	30	20	26	20	35	20	5.63

NOTE: For details of the following compliances, refer to footnotes listed on page 62.

*Actual service temperature range is application dependent.

MSHA⁽⁰⁹⁾, RoHS⁽¹¹⁾

Because we continually examine ways to improve our products, we reserve the right to alter specifications or discontinue products without prior notice.



TRANSPARENT
CONSTRUCTION

WATER



F

G

S



Tiger Suction™

F™/G™/S™ Series

Heavy Duty PVC Suction Hose

General Applications:

- Irrigation lines
- Pumps, rental and construction dewatering
- Pumps, trash
- Water suction – heavy duty

Construction: PVC tube with rigid PVC helix.

Service Temperature: -4°F (-20°C) to 150°F (+65°C)*

**New
“Safety Orange”
Color**

Features and Advantages:

- **Transparent Construction (F Series only)** – “See-the-flow.” Allows for visual confirmation of material flow.
- **“Safety Orange” Color (G Series Only)** – For high visibility on job site. Reduces risk of running or tripping over hose.
- **Smooth Outer Cover (Sizes 3/4” – 5”) –** Provides increased pressure rating and smooth surface for banding.
- **Convoluted Outer Cover (Sizes 6” & 8”) –** Provides increased hose flexibility.

Nominal Specifications

Series	ID (in.)	ID (mm)	OD (in.)	OD (mm)	Working Pressure (psi)		Vacuum Rating (in. Hg)		Approx. Bending Radius (in. @ 68°F)	Standard Length (ft.)	Weight (lbs./ft.)
					68°F	104°F	68°F	104°F			
F/G/S075	3/4	19.0	1.01	25.6	115	75	Full	28	3	100	0.21
F/G/S100	1	25.4	1.26	32.0	100	65	Full	28	3	100	0.27
F/G/S125	1 1/4	31.7	1.56	39.6	100	65	Full	26	4	100	0.36
F/G/S150	1 1/2	38.1	1.83	46.5	100	65	Full	26	5	100	0.48
F/G/S200	2	50.8	2.38	60.4	100	65	Full	26	7	100	0.71
F/G250	2 1/2	63.5	2.89	73.4	70	48	Full	26	8	100	0.96
F/G/S300	3	76.2	3.44	87.4	70	45	Full	26	10	100	1.25
F/G/S400	4	101.6	4.57	116.1	60	40	Full	26	15	100	1.95
F500	5	127.0	5.59	141.9	45	30	28	24	22	100/20	2.45
F/G600	6	152.4	6.77	172.0	40	25	28	22	25	100/20	3.76
F/G800	8	203.2	8.90	226.1	30	20	28	18	30	20	6.00

NOTE: Service life may vary depending on operating conditions and type of material being conveyed.

NOTE: For details of the following compliances, refer to footnotes listed on page 62.

*Actual service temperature range is application dependent.

RoHS(11)

Because we continually examine ways to improve our products, we reserve the right to alter specifications or discontinue products without prior notice.

KTCA0116

"Blue Water" BW™ Series Low Temperature PVC Suction Hose



General Applications:

- Extreme cold conditions
- Pumps, rental and construction dewatering
- Pumps, trash
- Water suction – standard duty

Construction: PVC tube with rigid PVC helix.

Service Temperature: -40°F (-40°C) to 150°F (+65°C)*

Features and Advantages:

- **"Cold-Flex" Materials** – Hose remains flexible in sub-zero temperatures. Beware of imitations! Blue Water™ truly remains flexible in extreme cold.
- **Transparent Construction** – "See-the-flow." Allows for visual confirmation of material flow.
- **Smooth Outer Cover (Sizes 1" - 4")** – Provides increased pressure rating and smooth surface for banding.
- **Convuluted Outer Cover (Sizes 5" & 6")** – Provides increased hose flexibility.

Nominal Specifications

Series	ID (in.)	ID (mm)	OD (in.)	OD (mm)	Working Pressure (psi)		Vacuum Rating (in. Hg)		Approx. Bending Radius (in. @ 68°F)	Standard Length (ft.)	Weight (lbs./ft.)
					68°F	104°F	68°F	104°F			
BW075	3/4	19.1	1.01	25.6	115	75	Full	28	3	100	0.19
BW100	1	25.4	1.26	32.0	90	65	Full	28	3	100	0.22
BW125	1 1/4	31.8	1.56	39.6	90	65	Full	26	4	100	0.36
BW150	1 1/2	38.1	1.79	45.5	90	65	Full	26	5	100	0.48
BW200	2	50.8	2.35	59.8	90	65	Full	26	7	100	0.62
BW250	2 1/2	63.5	2.87	73.0	70	48	Full	26	8	100	0.87
BW300	3	76.2	3.43	87.0	65	45	Full	26	10	100	1.23
BW400	4	101.6	4.49	114.0	55	40	Full	26	15	100	1.83
BW500	5	127.0	5.57	141.5	45	30	28	24	25	100/20	2.42
BW600	6	152.4	6.69	170.0	40	25	28	22	30	100/20	3.36

NOTE: Service life may vary depending on operating conditions and type of material being conveyed.

NOTE: For details of the following compliances, refer to footnotes listed on page 62.

NOTE: Refer to Storage and Handling, and Max Coil Stack Height on page 65.

*Actual service temperature range is application dependent.

RoHS(11)

Because we continually examine ways to improve our products, we reserve the right to alter specifications or discontinue products without prior notice.



ABRASION RESISTANT



"COLD-FLEX" MATERIALS



STATIC DISSIPATIVE



WATER



Our Highest Vacuum Rating!



Cold Flex™ CF™ Series Extra Heavy Duty Low Temperature PVC Suction Hose

General Applications:

- Extreme cold conditions
- Irrigation lines
- Material handling – standard duty
- Pumps, rental and construction dewatering
- Pumps, trash
- Slurry handling
- Water suction – heavy duty

Construction: PVC tube with rigid PVC helix.

Service Temperature: -40°F (-40°C) to 150°F (+65°C)*

Features and Advantages:

- **Superior Vacuum Rating** – Our toughest and most durable liquid suction hose! Extremely thick hose tube and extra large helix provide for a tough, durable hose with all sizes rated to full vacuum (at 68°F).
- **Cold Flex™ Materials** – Hose remains flexible in severe sub-zero temperatures.
- **Convuluted Outer Cover** – Provides increased hose flexibility.
- **Static Dissipative Tube** – Specially formulated to help prevent the build-up of static electricity for added safety and help keep material flowing smoothly.

Nominal Specifications

Series	ID (in.)	ID (mm)	OD (in.)	OD (mm)	Working Pressure (psi)		Vacuum Rating (in. Hg)		Approx. Bending Radius (in. @ 68°F)	Standard Length (ft.)	Weight (lbs./ft.)
					68°F	104°F	68°F	104°F			
CF150	1½	38.1	1.84	46.7	100	65	Full	28	3	100	0.40
CF200	2	50.8	2.41	61.2	100	65	Full	28	4	100	0.75
CF250	2½	63.5	2.93	74.5	90	55	Full	28	6	100	0.99
CF300	3	76.2	3.59	91.2	80	50	Full	28	7	100	1.34
CF400	4	101.6	4.67	118.6	65	35	Full	28	11	100	2.15
CF600	6	152.4	6.87	174.4	50	25	Full	28	18	100/50/20	3.76
CF800†	8	204.75	9.13	232.0	35	15	Full	26	24	60/20	6.59

NOTE: Service life may vary depending on operating conditions and type of material being conveyed.

NOTE: For details of the following compliances, refer to footnotes listed on page 60.

*Actual service temperature range is application dependent.

†Non-stock item, minimum order required. Contact Kuriyama customer service for details.

RoHS(11)

Because we continually examine ways to improve our products, we reserve the right to alter specifications or discontinue products without prior notice.

KTFCOA0116

W™ Series

Heavy Duty PVC Liquid Suction Hose

General Applications:

- Extreme cold conditions (Sizes 4" - 16")
- Fish suction
- Gold dredging
- Pumps, rental and construction dewatering
- Pumps, trash
- Slurry handling
- Water suction – heavy duty

Construction: PVC tube with rigid PVC helix.

Service Temperature:

Sizes 1" - 3": -4°F (-20°C) to 150°F (+65°C)*;
 Sizes 4" - 16": -40°F (-40°C) to 150°F (+65°C)*



The Original Heavy Duty Suction Hose

Features and Advantages:

- **“Cold-Flex” Materials (Sizes 4" - 16")** – Hose remains flexible in sub-zero temperatures.
- **Transparent Construction** – “See-the-flow.” Allows for visual confirmation of material flow.
- **Convoluted Outer Cover** – Provides increased hose flexibility.

Nominal Specifications

Series	ID (in.)	ID (mm)	OD (in.)	OD (mm)	Working Pressure (psi)		Vacuum Rating (in. Hg)		Approx. Bending Radius (in. @ 68°F)	Standard Length (ft.)	Weight (lbs./ft.)
					68°F	104°F	68°F	104°F			
W100	1	25.4	1.30	33.0	55	35	Full	28	1	100	0.21
W125	1¼	31.7	1.60	40.6	50	30	Full	28	2	100	0.28
W150	1½	38.1	1.85	47.0	50	30	Full	28	2	100	0.34
W200	2	50.8	2.40	61.0	50	30	Full	28	3	100	0.52
W250	2½	63.5	2.99	75.9	45	25	Full	28	4	100	0.77
W300	3	76.2	3.64	92.5	45	25	Full	28	6	100	1.18
W400	4	101.6	4.76	121.0	35	18	Full	28	8	100	1.92
W500	5	127.0	5.75	146.0	35	18	28	25	12	100/20	2.42
W600	6	152.4	7.00	177.8	30	15	28	25	14	100/20	3.76
W800	8	203.2	9.18	233.2	30	15	28	25	24	40/20	5.99
W1000	10	254.0	11.56	293.5	25	12	28	25	39	40/20	9.74
W1200	12	304.8	13.64	346.5	20	10	28	25	59	40/20	12.77
W1400†	14	357.6	15.59	396.0	18	8	26	23	80	20	13.50
W1600†	16	408.4	17.72	450.0	12	5	24	20	95	20	16.00

NOTE: For details of the following compliances, refer to footnotes listed on page 62.

NOTE: Service life may vary depending on operating conditions and type of material being conveyed.

***Actual service temperature range is application dependent.**

†Non-stock item, minimum order required. Contact Kuriyama customer service for details.

RoHS(11)

Because we continually examine ways to improve our products, we reserve the right to alter specifications or discontinue products without prior notice.



"COLD-FLEX"
MATERIALS



TRANSPARENT
CONSTRUCTION



WATER



**Our Most
Flexible Suction
Hose**



Made in USA

WH™ Series Standard Duty PVC Liquid Suction Hose

SH™ Series Standard Duty Low Temperature PVC Liquid Suction Hose

General Applications:

- Drain lines
- Dust collection
- Gold dredging
- Water suction – standard duty

Construction: PVC tube with rigid PVC helix.

Service Temperature (WH Series): -4°F (-20°C) to 150°F (+65°C)*

Service Temperature (SH Series): -40°F (-40°C) to 150°F (+65°C)*

Features and Advantages:

- **"Cold-Flex" Materials (SH Series; Sizes 2½" - 8")** – Hose remains flexible in sub-zero temperatures.
- **Transparent Construction** – "See-the-flow." Allows for visual conformation of material flow.
- **Convoluted Outer Cover** – Provides increased hose flexibility.

Nominal Specifications

Series	ID (in.)	ID (mm)	OD (in.)	OD (mm)	Working Pressure (psi)		Vacuum Rating (in. Hg)		Approx. Bending Radius (in. @ 68°F)	Standard Length (ft.)	Weight (lbs./ft.)
					68°F	104°F	68°F	104°F			
WH100	1	25.4	1.22	31.0	45	15	Full	24	1	100	0.15
WH125	1¼	31.8	1.54	39.2	40	12	Full	24	1	100	0.20
WH150	1½	38.1	1.80	45.7	40	12	Full	24	1.5	100	0.25
WH200	2	50.8	2.32	58.7	35	10	26	20	2.5	100	0.31
SH250	2½	63.5	9.97	75.5	30	9	24	18	3	100	0.43
SH300	3	76.2	3.48	88.4	25	7	24	18	4	100	0.64
SH400	4	101.6	5.52	114.8	25	7	18	14	6	100	1.06
SH500	5	127.0	5.57	141.5	20	6	16	12	10	100	1.47
SH600	6	153.4	6.69	169.9	20	6	14	10	12	100	2.27
SH800	8	204.8	8.86	225.0	10	3	12	8	24	60	3.34

NOTE: Service life may vary depending on operating conditions and type of material being conveyed.

NOTE: For details of the following compliances, refer to footnotes listed on page 62.

*Actual service temperature range is application dependent.

RoHS(11)

Because we continually examine ways to improve our products, we reserve the right to alter specifications or discontinue products without prior notice.

KTCA0116

WST™ Series

Heavy Duty PVC Fabric Reinforced Suction & Discharge Hose

General Applications:

- Fish suction
- Irrigation lines
- Pumps, rental and construction dewatering
- Pumps, trash
- Suction and discharge
- Water suction – heavy duty

Construction: Double-ply PVC tube, polyester fabric reinforcement and rigid PVC helix.

Service Temperature: -4°F (-20°C) to 150°F (+65°C)*



**NEW
UPDATED WORKING
PRESSURES!**

Features and Advantages:

- **Fabric Reinforcement** – Designed with high tensile strength polyester yarn jacket to handle both suction and higher pressure discharge applications.
- **Transparent Construction** – “See-the-flow.” Allows for visual confirmation of material flow.
- **Easy Slide Helix** – Rigid helix design protects hose tube from cover wear, and allows hose to slide easily over rough surfaces. Easy-to-handle.

Nominal Specifications

Series	ID (in.)	ID (mm)	OD (in.)	OD (mm)	Working Pressure (psi)		Vacuum Rating (in. Hg)		Approx. Bending Radius (in. @ 68°F)	Standard Length (ft.)	Weight (lbs./ft.)
					68°F	104°F	68°F	104°F			
WST150	1-1/2	38.1	1.95	49.5	110	70	Full	28	2.5	100	0.42
WST200	2	50.8	2.60	66.0	100	65	Full	28	4	100	0.74
WST300	3	76.2	3.62	92.0	100	50	Full	28	6	100/20	1.13
WST400	4	101.6	4.76	121.0	75	37	Full	28	8	100/20	1.74
WST500	5	127.0	5.98	151.9	70	35	28	25	11	100/20	2.95
WST600	6	152.4	7.17	182.1	70	35	28	25	13	100/20	3.88
WST800	8	203.5	9.21	234.0	60	30	26	20	18	25/20	5.57

NOTE: Service life may vary depending on operating conditions and type of material being conveyed.

NOTE: For details of the following compliances, refer to footnotes listed on page 62.

*Actual service temperature range is application dependent.



WG™ Series

Heavy Duty PVC Liquid Suction Hose

General Applications:

- Fish suction
- Irrigation lines
- Pumps, rental and construction dewatering
- Pumps, trash
- Rock dusting
- Water suction – heavy duty

Construction: PVC tube with rigid PVC helix.

Service Temperature: -4°F (-40°C) to 150°F (+65°C)*

Features and Advantages:

- **Highly Durable PVC Tube** – Formulated from highly durable PVC compound for increased abrasion and tear resistance.
- **Convuluted Outer Cover** – Provides increased hose flexibility.

Nominal Specifications

Series	ID (in.)	ID (mm)	OD (in.)	OD (mm)	Working Pressure (psi)		Vacuum Rating (in. Hg)		Approx. Bending Radius (in. @ 68°F)	Standard Length (ft.)	Weight (lbs./ft.)
					68°F	104°F	68°F	104°F			
WG150	1½	38.1	1.85	47.0	50	25	Full	28	2	100	0.34
WG200	2	50.8	2.40	61.0	50	25	Full	28	3	100	0.52
WG300	3	76.2	3.64	92.5	45	25	Full	28	6	100	1.18
WG400	4	101.6	4.76	120.9	35	18	Full	28	8	100	1.93

NOTE: Service life may vary depending on operating conditions and type of material being conveyed.

NOTE: For details of the following compliances, refer to footnotes listed on page 62.

*Actual service temperature range is application dependent.

RoHS(11)

Because we continually examine ways to improve our products, we reserve the right to alter specifications or discontinue products without prior notice.

KTCA0116

“Marine Hose”

MH™ Series

PVC Suction Hose

General Applications:

- Drain lines
- Marine bilge discharge
- Marine plumbing
- Recreational vehicle (RV) plumbing

Construction: PVC tube with rigid PVC helix.

Service Temperature: -4°F (-20°C) to 150°F (+65°C)*



Features and Advantages:

- **Odor-resistant Tube** – Special additives help eliminate the build-up of unwanted odors.
- **Convolved Outer Cover** – Provides increased hose flexibility.
- **Easy Installation** – Ideal for working in confined areas. Permits installers to make smooth, tight turns. Requires fewer fittings than rigid pipe.



Part No. A2150L1

Custom Molded Cuff — 1½" Molded cuff (shown above) is designed for use with Tigerflex® Series MH150 marine hose.

Nominal Specifications

Series	ID (in.)	ID (mm)	OD (in.)	OD (mm)	Working Pressure (psi)		Vacuum Rating (in. Hg)		Approx. Bending Radius (in. @ 68°F)	Standard Length (ft.)	Approx. Wt. (lbs./ft.)
					68°F	104°F	68°F	104°F			
MH100	1	25.4	1.22	31.0	45	15	Full	24	1	100	0.15
MH125	1¼	32.0	1.49	38.0	40	12	Full	24	1.5	100	0.20
MH150	1½	38.1	1.77	45.0	40	12	Full	24	2	100	0.25
MH200	2	50.8	2.32	59.0	35	10	26	20	2.5	100	0.31

NOTE: Service life may vary depending on operating conditions and type of material being conveyed.

NOTE: For details of the following compliances, refer to footnotes listed on page 60.

*Actual service temperature range is application dependent.

RoHS⁽¹¹⁾

Because we continually examine ways to improve our products, we reserve the right to alter specifications or discontinue products without prior notice.



“Spa Hose” FMCR™ Series PVC Suction Hose

General Applications:

- Commonly referred to as “flex pipe”
- Drain lines
- Spa, pool and hot tub plumbing

Construction: PVC tube with rigid PVC helix.

Service Temperature: -4°F (-20°C) to 150°F (+65°C)*

Features and Advantages:

- **Precision Controlled OD** – Designed to be glued into Schedule 40 PVC fittings.
- **IAPMO⁽⁰⁷⁾ Compliant** – For use piping spas, hot tubs and swimming pools.
- **Easy Installation** – Ideal for working in confined areas. Permits installers to make smooth, tight turns. Requires fewer fittings than rigid pipe when plumbing a normal spa or hot tub application.

Nominal Specifications

Series	IPS Size (in.)	OD (in.)	OD (mm)	Working Pressure (psi)		Vacuum Rating (in. Hg)		Approx. Bending Radius (in. @ 68°F)	Standard Length (ft.)	Weight (lbs./ft.)
				68°F	104°F	68°F	104°F			
F16MCR	1/2	0.850	21.50	100	70	28	26	2	100/50	0.14
F20MCR	3/4	1.053	26.75	100	70	28	26	2	100/50	0.21
F27MCR	1	1.320	33.52	100	70	28	24	3	100/50	0.28
F36MCR	1 1/4	1.663	42.25	80	55	28	24	4	100/50	0.37
F42MCR	1 1/2	1.904	48.35	70	50	28	24	4	100/50	0.44
F52MCR	2	2.381	60.48	70	50	28	24	6	100/50	0.58
F78MCR	3	3.500	89.00	65	40	28	22	8	50	1.20

NOTE: For details of the following compliances, refer to footnotes listed on page 62.

NOTE: Use with recommended primers and PVC cements; consult with glue supplier for recommendations. Coils of Tigerflex® Spa Hose should not be stacked more than five coils high. Hose which has been stacked high may be damaged over time.

NOTE: Black color available upon request. Minimum order quantity may apply. Contact Kuriyama customer service for details.

*Actual service temperature range is application dependent.

Product Warning

Like other materials, Spa Hoses can be damaged by rodents or insects, including termites. Our warranty does not cover damages caused by them. Spa Hose should not be used underground in areas infested by termites. This product warning shall be given to every purchaser of Spa Hose. (Rev. 7/98)

IAPMO⁽⁰⁷⁾, RoHS⁽¹¹⁾

Because we continually examine ways to improve our products, we reserve the right to alter specifications or discontinue products without prior notice.

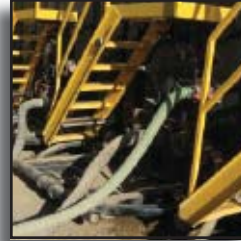
Tiger™ Green TG™ Series EPDM Suction Hose

General Applications:

- Agriculture liquid fertilizers
- Irrigation lines
- Liquid manure handling
- Marine bilge discharge
- Pumps, rental and construction dewatering
- Pumps, trash
- Septic and wastewater handling
- Used frack solution removal
- Water suction – standard duty

Construction: EPDM tube with polyethylene helix.

Service Temperature: -40°F (-40°C) to 160°F (+71°C)*



Features and Advantages:

- **Superior Rubber Compounds** – Tigerflex™ uses only the best available EPDM compounds, which provide the ideal combination of light-weight, flexibility, durability and chemical resistance.
- **Superior Flexibility** – Our tests show up to 22% more flexible than the competition, especially in sub-zero weather! Tiger™ Green comes off the trucks more flexible and easier to handle than other similar hoses.
- **Easy Slide Helix** – Rigid helix design protects hose tube from cover wear, and allows hose to slide easily over rough surfaces and around corners. Easy-to-handle.
- **Convuluted Outer Cover** – Provides increased hose flexibility.
- **"Cold-Flex" Materials** – Hose remains flexible in sub-zero temperatures.

Nominal Specifications

Series	ID (in.)	ID (mm)	OD (in.)	OD (mm)	Working Pressure (psi)		Vacuum Rating (in. Hg)		Approx. Bending Radius (in. @ 68°F)	Standard Length (ft.)	Weight (lbs./ft.)
					68°F	104°F	68°F	104°F			
TG100	1	25.4	1.40	35.5	65	45	FULL	28	2	100	0.28
TG125	1¼	31.8	1.63	41.4	60	40	FULL	28	3	100	0.33
TG150	1½	38.1	1.93	49.0	50	35	FULL	28	3	100	0.44
TG200	2	50.8	2.51	63.8	50	35	FULL	28	5	100	0.67
TG250	2½	63.5	3.07	78.0	45	30	FULL	28	5.5	100	0.95
TG300	3	76.2	3.60	91.5	45	30	FULL	26	7	100	1.14
TG400	4	101.6	4.70	119.5	40	25	FULL	26	11.5	100	1.84
TG600	6	152.4	6.85	174.0	30	20	28	24	20	100/20	3.07

NOTE: Service life may vary depending on operating conditions and type of material being conveyed.

NOTE: For details of the following compliances, refer to footnotes listed on page 62.

NOTE: Other colors available upon request. Minimum order quantity may apply. Contact Kuriyama Tigerflex department for details.

NOTE: Contact your nearest KOA warehouse for availability of 50 ft. lengths.

*Actual service temperature range is application dependent.



"COLD-FLEX"
MATERIALS



EASY SLIDE



WATER



Tiger™ Yellow TY™ Series EPDM Suction Hose

General Applications:

- Agriculture liquid fertilizers
- Irrigation lines
- Liquid manure handling
- Marine bilge discharge
- Pumps, rental and construction dewatering
- Pumps, trash
- Septic and wastewater handling
- Used frack solution removal
- Water suction – standard duty

Construction: EPDM tube with polyethylene helix.

Service Temperature: -40°F (-40°C) to 160°F (+71°C)*

Features and Advantages:

- **Superior Rubber Compounds** – Tigerflex™ uses only the best available EPDM compounds, which provide the ideal combination of light-weight, flexibility, durability and chemical resistance.
- **Superior Flexibility** – Our tests show up to 22% more flexible than the competition, especially in sub-zero weather! Tiger™ Green comes off the trucks more flexible and easier to handle than other similar hoses.
- **Easy Slide Helix** – Rigid helix design protects hose tube from cover wear, and allows hose to slide easily over rough surfaces and around corners. Easy-to-handle.
- **Convuluted Outer Cover** – Provides increased hose flexibility.
- **"Cold-Flex" Materials** – Hose remains flexible in sub-zero temperatures.

Nominal Specifications

Series	ID (in.)	ID (mm)	OD (in.)	OD (mm)	Working Pressure (psi)		Vacuum Rating (in. Hg)		Approx. Bending Radius (@ 68°F)	Standard Length (ft.)	Weight (lbs./ft.)
					68°F	104°F	68°F	104°F			
TY100	1	25.4	1.40	35.5	65	45	FULL	28	2	100	0.28
TY125	1¼	31.8	1.63	41.4	60	40	FULL	28	3	100	0.33
TY150	1½	38.1	1.93	49.0	50	35	FULL	28	3	100	0.44
TY200	2	50.8	2.51	63.8	50	35	FULL	28	5	100	0.67
TY300	3	76.2	3.60	91.5	45	30	FULL	26	7	100	1.14
TY400	4	101.6	4.70	119.5	40	25	FULL	26	11.5	100	1.84

NOTE: Service life may vary depending on operating conditions and type of material being conveyed.

NOTE: For details of the following compliances, refer to footnotes listed on page 62.

NOTE: Contact your nearest KOA warehouse for availability of 50 ft. lengths.

*Actual service temperature range is application dependent.

RoHS(11)

Because we continually examine ways to improve our products, we reserve the right to alter specifications or discontinue products without prior notice.

KTCA0517

Tiger™ Red TRED™ Series

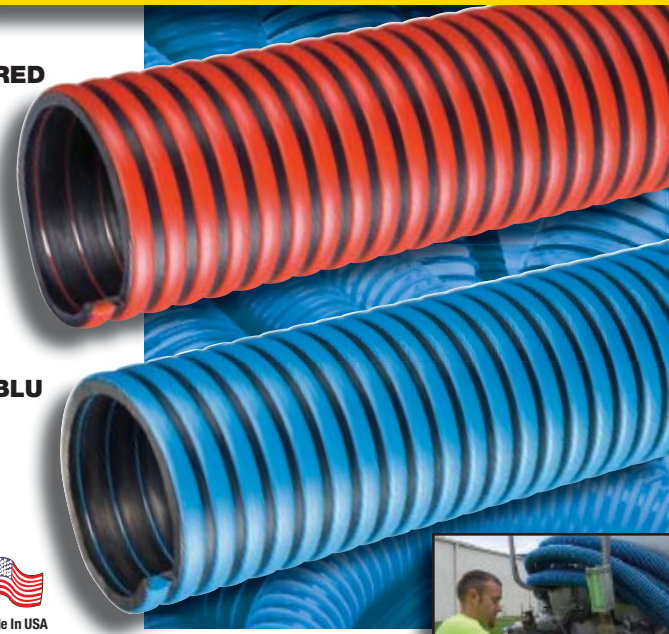
Tiger™ Blue TBLU™ Series EPDM Suction Hoses

TRED

TBLU



Made in USA



**NEW
COLORS!**

General Applications:

- Agriculture liquid fertilizers
- Irrigation lines
- Liquid manure handling
- Marine bilge discharge
- Pumps, rental and construction dewatering
- Pumps, trash
- Septic and wastewater handling
- Used frack solution removal
- Water suction – standard duty

Construction: EPDM tube with polyethylene helix.

Service Temperature: -40°F (-40°C) to 160°F (+71°C)*

Features and Benefits:

- **Superior Rubber Compounds** – Tigerflex™ uses only the best available EPDM compounds, which provide the ideal combination of light-weight, flexibility, durability and chemical resistance.
- **Superior Flexibility** – Our tests show up to 22% more flexible than the competition, especially in sub-zero weather! Tiger™ Green comes off the trucks more flexible and easier to handle than other similar hoses.
- **Easy Slide Helix** – Rigid helix design protects hose tube from cover wear, and allows hose to slide easily over rough surfaces and around corners. Easy-to-handle.
- **Convoluted Outer Cover** – Provides increased hose flexibility.
- **"Cold-Flex" Materials** – Hose remains flexible in sub-zero temperatures.

Choose from colors red or blue to match company equipment.

Nominal Specifications

Series	ID (in.)	ID (mm)	OD (in.)	OD (mm)	Working Pressure (psi)		Vacuum Rating (in. Hg)		Approx. Bending Radius (@ 68°F)	Standard Length (ft.)	Weight (lbs./ft.)
					68°F	104°F	68°F	104°F			
TRED/TBLU200	2	50.8	2.51	63.8	50	35	FULL	28	5	100	0.67
TRED/TBLU300	3	76.2	3.60	91.5	45	30	FULL	26	7	100	1.14
TRED/TBLU400	4	101.6	4.70	119.5	40	25	FULL	26	11.5	100	1.84

NOTE: Service life may vary depending on operating conditions and type of material being conveyed.

NOTE: For details of the following compliances, refer to footnotes listed on page 62.

NOTE: Contact your nearest KOA warehouse for availability of 50 ft. lengths.

*Actual service temperature range is application dependent.

RoHS(11)

Because we continually examine ways to improve our products, we reserve the right to alter specifications or discontinue products without prior notice.



"COLD-FLEX"
MATERIALS



EASY SLIDE



WATER



Made in USA

Tiger™ - SD

TSD™ Series

EPDM Fabric Reinforced Suction & Discharge Hose

General Applications:

- Agriculture liquid fertilizers
- Agri-foam systems
- Liquid manure handling
- Pumps, rental and construction dewatering
- Pumps, trash
- Septic and wastewater handling
- Suction and discharge
- Water suction – heavy duty

Construction: Double-ply EPDM, polyester fabric reinforcement and polyethylene helix.

Service Temperature: -40°F (-40°C) to 160°F (+71°C)*

Features and Advantages:

- **Superior Rubber Compounds** – Tigerflex™ uses only the best available EPDM compounds, which provide the ideal combination of light-weight, flexibility, durability and chemical resistance.
- **Fabric Reinforcement** – Designed with high tensile strength polyester yarn jacket to handle both suction, and higher pressure discharge applications.
- **"Cold-Flex" Materials** – Hose remains flexible in sub-zero temperatures.
- **Easy Slide Helix** – Rigid helix design protects hose tube from cover wear, and allows hose to slide easily over rough surfaces and around corners. Easy-to-handle.
- **Convuluted Outer Cover** – Provides increased hose flexibility.

Nominal Specifications

Series	ID (in.)	ID (mm)	OD (in.)	OD (mm)	Working Pressure (psi)		Vacuum Rating (in Hg)		Approx. Bending Radius (in. @ 68°F)	Standard Length (ft.)	Weight (lbs./ft.)
					68°F	104°F	68°F	104°F			
TSD125	1¼	31.8	1.70	43.2	100	75	FULL	28	3	100	0.41
TSD150	1½	38.1	2.00	50.7	100	75	FULL	28	3	100	0.51
TSD200	2	50.8	2.54	64.5	100	75	FULL	28	5	100	0.73
TSD300	3	76.2	3.62	92.0	90	65	FULL	26	8	100	1.18

NOTE: Service life may vary depending on operating conditions and type of material being conveyed.

NOTE: For details of the following compliances, refer to footnotes listed on page 62.

NOTE: Contact your nearest KOA warehouse for availability of 50 ft. lengths.

*Actual service temperature range is application dependent.

RoHS(11)

Because we continually examine ways to improve our products, we reserve the right to alter specifications or discontinue products without prior notice.

KTFCOA0517



**VIEW
THE NEW CATALOG**
kuriyama.com/catalogs/solarguard/

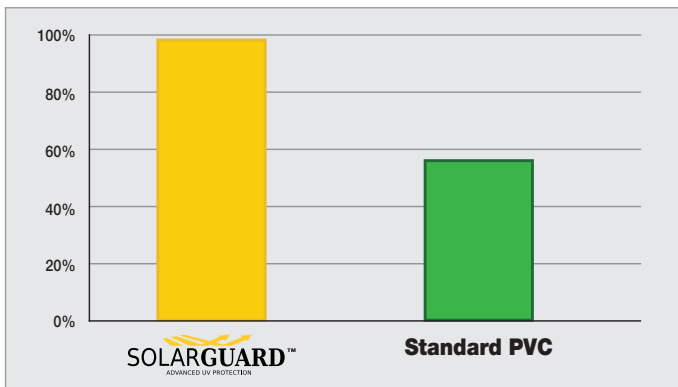
SOLARGUARD™

**Liquid Suction and
Material Handling
Hoses with Advanced
UV Protection.**

Lasts Longer – Twice the life!†
Maintains Flexibility
“Safety Yellow” Color

† On average, when exposed to high amounts of UV light.

Tensile Strength Retention



Percentage of tensile strength remaining after 720 hours of accelerated UV light exposure per ASTM G154



AMPH-SLR™ Series



SLR™ Series



SG™ Series



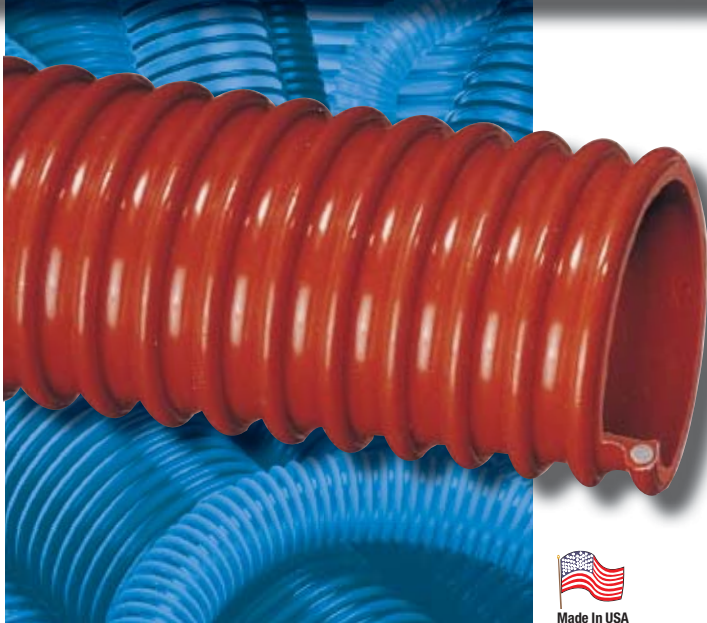
WST-SLR™ Series





OIL RESISTANT

WATER



Made in USA

WOR™ Series

Heavy Duty Oil Resistant PVC Suction Hose

General Applications:

- Environmental clean-up
- Oil skimming
- Oil slurries
- Oil suction
- Vapor recovery – hydrocarbon emissions

Construction: Oil resistant PVC tube with rigid PVC helix.

Service Temperature: 5°F (-15°C) to 150°F (+65°C)*

Features and Advantages:

- **Oil Resistant PVC** – Made with special oil resistant compounds which exhibit medium resistance to oil and other hydrocarbons.
- **Convolved Outer Cover** – Provides increased hose flexibility.

Nominal Specifications

Series	ID (in.)	ID (mm)	OD (in.)	OD (mm)	Working Pressure (psi)		Vacuum Rating (in. Hg)		Approx. Bending Radius (in. @ 68°F)	Standard Length (ft.)	Weight (lbs./ft.)
					68°F	104°F	68°F	104°F			
WOR150	1½	38.1	1.92	48.8	50	25	28	24	3	100	0.31
WOR200	2	50.8	2.40	61.0	40	20	28	24	4	100	0.50
WOR300	3	76.2	3.64	92.5	40	20	28	24	6	100	1.17
WOR400	4	101.6	4.72	119.9	35	18	28	22	10	100	1.74

NOTE: Service life may vary depending on operating conditions and type of material being conveyed.

NOTE: For details of the following compliances, refer to footnotes listed on page 62.

*Actual service temperature range is application dependent.

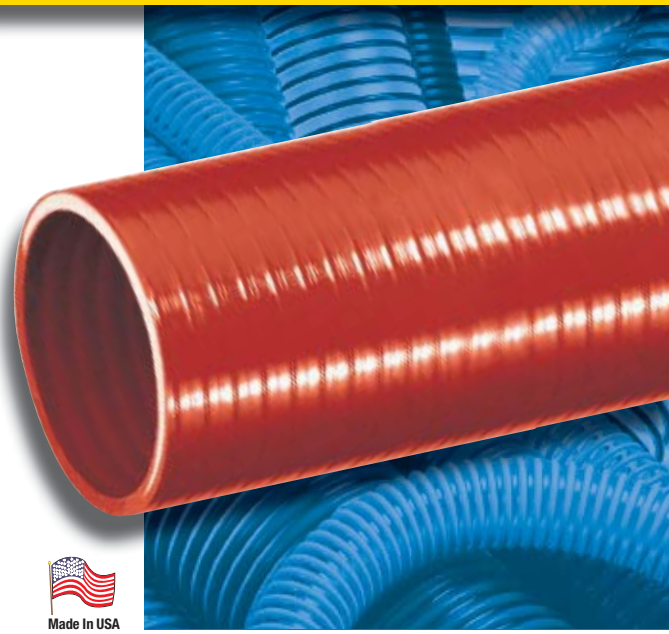
RoHS(11)

Because we continually examine ways to improve our products, we reserve the right to alter specifications or discontinue products without prior notice.

KTFC A0116

ORV™ Series

Heavy Duty Oil Resistant PVC Suction Hose



General Applications:

- Environmental cleanup
- Oil skimming
- Oil slurries
- Oil suction
- Vapor recovery – hydrocarbon emissions

Construction: Oil resistant PVC tube with rigid PVC helix.

Service Temperature: 5°F (-15°C) to 150°F (+65°C)*

Features and Benefits:

- **Oil Resistant PVC Tube** – Made with special oil resistant compounds which exhibit medium resistance to oil and other hydrocarbons.
- **Smooth Outer Cover** – Provides increased pressure rating and smooth surface for banding.

Nominal Specifications

Series	ID (in.)	ID (mm)	OD (in.)	OD (mm)	Working Pressure (psi)		Vacuum Rating (in. Hg)		Approx. Bending Radius (in. @ 68°F)	Standard Length (ft.)	Weight (lbs./ft.)
					68°F	104°F	68°F	104°F			
ORV075	3/4	19.0	1.01	25.6	100	60	28	26	3	100	0.19
ORV100	1	25.4	1.26	32.0	80	50	28	26	3	100	0.24
ORV150	1 1/2	38.1	1.76	44.6	60	40	28	24	5	100	0.35
ORV200	2	50.8	2.32	59.0	60	40	28	24	7	100	0.55
ORV300	3	76.2	3.41	86.7	65	40	28	22	10	100	1.09

NOTE: Service life may vary depending on operating conditions and type of material being conveyed.

NOTE: For details of the following compliances, refer to footnotes listed on page 62.

*Actual service temperature range is application dependent.

RoHS(11)

Because we continually examine ways to improve our products, we reserve the right to alter specifications or discontinue products without prior notice.



**ABRASION
RESISTANT PLUS**



**"COLD-FLEX"
MATERIALS**



**OIL
RESISTANT**



**TRANSPARENT
CONSTRUCTION**



Oil Vac™ OV™ Series Heavy Duty Oil Resistant Polyurethane Suction Hose

General Applications:

- Material handling - heavy duty abrasive
- Material chutes
- Oil suction – heavy duty

Construction: Polyurethane tube with rigid PVC helix.

Service Temperature: -40°F (-40°C) to 150°F (+65°C)*

Features and Advantages:

- **Oil Resistant Polyurethane Tube** – Handles most fuels and oils. Excellent resistance to gasoline, diesel, ethanol, blends (up to E30) and biodiesels (up to B100).
- **Abrasion Resistant Polyurethane Tube** – Solid polyurethane tube outlasts other materials when severe abrasion is a factor. Provides for longer hose life and lower operating costs versus rubber or PVC hoses.
- **Transparent Construction** – “See-the-flow.” Allows for visual confirmation of material flow.
- **“Cold-Flex” Materials** – Hose remains flexible in sub-zero temperatures.

Nominal Specifications

Series	ID (in.)	ID (mm)	OD (in.)	OD (mm)	Working Pressure (psi)		Vacuum Rating (in. Hg)		Approx. Bending Radius (in. @ 68°F)	Standard Length (ft.)	Weight (lbs./ft.)
					68°F	104°F	68°F	104°F			
OV100	1	25.4	1.26	32.0	85	60	28	26	3	100	0.23
OV125	1¼	31.7	1.49	37.8	85	60	28	24	5	100	0.30
OV150	1½	38.1	1.76	44.6	70	50	28	24	5	100	0.35
OV200	2	50.8	2.32	59.0	65	45	28	24	7	100	0.55
OV250†	2½	63.5	2.87	73.0	65	45	28	24	8	100	0.82
OV300†	3	76.2	3.41	86.7	65	40	28	22	10	100	1.09

NOTE: Service life may vary depending on operating conditions and type of material being conveyed.

NOTE: For details of the following compliances, refer to footnotes listed on page 62.

***Actual service temperature range is application dependent.**

†Non-stock item, minimum order requirements may apply. Contact Kuriyama customer service for details.

RoHS(11)

Because we continually examine ways to improve our products, we reserve the right to alter specifications or discontinue products without prior notice.

KTFCOA0116