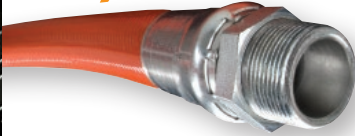




Piranha® "Ready-To-Go" Stock Length Hose Assemblies

If you don't see what you need, please refer to page 11 for your "Made-To-Order" assembly length ordering instructions.

2,500 PSI



3,000 PSI



4,000 PSI



4,000 PSI



5,000 PSI



SERIES SPOR - ORANGE COVER

MADE IN USA

PART NUMBER	SIZE CODE	HOSE I.D. (INCHES)	MALE NPTF NOM. THREAD SIZE	WORKING PRESSURE (MAX PSI)	ASSEMBLED LENGTH FT.	WT. PER PKG. (LBS.)
SPOR-MM12X400	12	3/4	3/4 - 14	2,500	400	112
SPOR-MM12X500	12	3/4	3/4 - 14	2,500	500	140
SPOR-MM12X600	12	3/4	3/4 - 14	2,500	600	168
SPOR-MM16X400	16	1	1-11 1/2	2,500	400	160
SPOR-MM16X500	16	1	1-11 1/2	2,500	500	200
SPOR-MM16X600	16	1	1-11 1/2	2,500	600	240
SPOR-MM16X800	16	1	1-11 1/2	2,500	800	320
SPOR-MM20X600	20	1 1/4	1 1/4 - 11 1/2	2,500	600	354

SERIES SLSPOR - ORANGE COVER **NEW!**

MADE IN USA

PART NUMBER	SIZE CODE	HOSE I.D. (INCHES)	MALE NPTF NOM. THREAD SIZE	WORKING PRESSURE (MAX PSI)	ASSEMBLED LENGTH FT.	WT. PER PKG. (LBS.)
SLSPOR-MM12X400	12	3/4"	3/4 - 14	2500	400	112
SLSPOR-MM12X500	12	3/4"	3/4 - 14	2500	500	140
SLSPOR-MM16X400	16	1"	1 - 11 1/2	2500	400	160
SLSPOR-MM16X500	16	1"	1 - 11 1/2	2500	500	200
SLSPOR-MM20X500	20	1 1/4"	1 1/4 - 11 1/2	2500	500	295

SERIES HPBU - BLUE COVER

MADE IN USA

PART NUMBER	SIZE CODE	HOSE I.D. (INCHES)	MALE NPTF NOM. THREAD SIZE	WORKING PRESSURE (MAX PSI)	ASSEMBLED LENGTH FT.	WT. PER PKG. (LBS.)
HPBU-MM12X400	12	3/4	3/4 - 14	3,000	400	116
HPBU-MM12X500	12	3/4	3/4 - 14	3,000	500	145
HPBU-MM12X600	12	3/4	3/4 - 14	3,000	600	174
HPBU-MM16X500	16	1	1-11 1/2	3,000	500	205
HPBU-MM16X600	16	1	1-11 1/2	3,000	600	246
HPBU-MM16X800	16	1	1-11 1/2	3,000	800	328

SERIES LLGR - GREEN COVER **NEW!**

MADE IN USA

PART NUMBER	SIZE CODE	HOSE I.D. (INCHES)	MALE NPTF NOM. THREAD SIZE	WORKING PRESSURE (MAX PSI)	ASSEMBLED LENGTH FT.	WT. PER PKG. (LBS.)
LLGR-MM02X100	02	1/8"	1/8 - 27	4000	100	4
LLGR-MM04X100	04	1/4"	1/4 - 18	4000	100	6
LLGR-MM04X200	04	1/4"	1/4 - 18	4000	200	12
LLGR-MM06X100	06	3/8"	3/8 - 18	4000	100	11
LLGR-MM06X150	06	3/8"	3/8 - 18	4000	150	15
LLGR-MM06X200	06	3/8"	3/8 - 18	4000	200	22
LLGR-MM06X250	06	3/8"	3/8 - 18	4000	250	28
LLGR-MM06X300	06	3/8"	3/8 - 18	4000	300	33
LLGR-MM08X100	08	1/2"	1/2 - 14	4000	100	16
LLGR-MM08X500	08	1/2"	1/2 - 14	4000	500	80
LLGR-MM08X600	08	1/2"	1/2 - 14	4000	600	96
LLGR-MS06X100	06	3/8"	3/8 - 18	4000	100	11
LLGR-MS06X200	06	3/8"	3/8 - 18	4000	200	22
LLGR-MS06X300	06	3/8"	3/8 - 18	4000	300	33
SLGR-MM06X250	06	3/8"	3/8 - 18	4000	250	28

SERIES SHBK - BLACK COVER

MADE IN USA

PART NUMBER	SIZE CODE	HOSE I.D. (INCHES)	MALE NPTF NOM. THREAD SIZE	WORKING PRESSURE (MAX PSI)	ASSEMBLED LENGTH FT.	WT. PER PKG. (LBS.)
SHBK-MM08X400	08	1/2	1/2 - 14	4,000	400	76
SHBK-MM08X500	08	1/2	1/2 - 14	4,000	500	95
SHBK-MM08X600	08	1/2	1/2 - 14	4,000	600	114

SERIES LLRD - RED COVER **NEW!**

MADE IN USA

PART NUMBER	SIZE CODE	HOSE I.D. (INCHES)	MALE NPTF NOM. THREAD SIZE	WORKING PRESSURE (MAX PSI)	ASSEMBLED LENGTH FT.	WT. PER PKG. (LBS.)
LLRD-MM04X100	04	1/4"	1/4 - 18	5000	100	6
LLRD-MM04X150	04	1/4"	1/4 - 18	5000	200	8
LLRD-MM04X200	04	1/4"	1/4 - 18	5000	200	12
LLRD-MM06X300	06	3/8"	3/8 - 18	5000	300	39
LLRD-MM08X500	08	1/2"	1/2 - 14	5000	500	65
LLRD-MM08X600	08	1/2"	1/2 - 14	5000	600	78

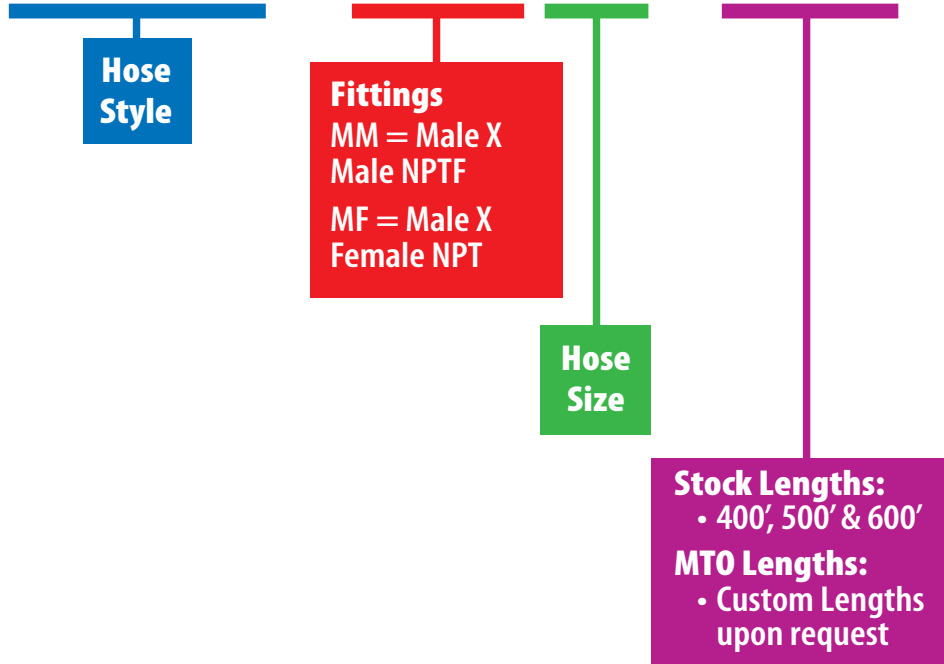




Standard & Custom Ordering Instructions

Assembly Custom Part Numbering System:

Example: **SPOR - MM16X250**



Hose Style: _____

Fittings: _____

Size: _____

Length: _____

Please call or fax your inquiry to: Phone: (800) 250-5132
 Fax: (231) 779-4399

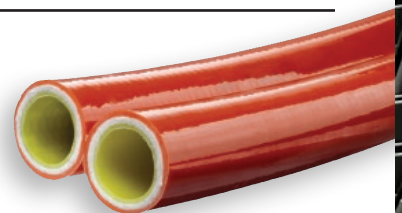
Company Profile

Company Name _____ Contact _____

Address _____ City _____ State _____ Zip _____

Phone _____ Fax _____ E-mail _____

Twin/Multi Line MTO and available upon request.



FOR AVAILABILITY OF PRODUCTS AND SIZES SHOWN, PLEASE REFER TO THE BACK PAGE FOR YOUR NEAREST STOCKING LOCATION.
 BECAUSE WE CONTINUALLY EXAMINE WAYS TO IMPROVE OUR PRODUCTS, WE RESERVE THE RIGHT TO ALTER SPECIFICATIONS OR DISCONTINUE PRODUCTS WITHOUT PRIOR NOTICE.





Fittings & Accessories for Piranha Hoses

End fittings and menders for thermoplastic hose are not interchangeable. It is essential that hose, end fittings, menders and tooling are properly matched. Identification of Piranha Hose Products is simple. The inner tube of all Piranha sewer cleaning hose is yellow, as assigned by WASTEC (Waste Equipment Technology Association) to the manufacturer's identification code. To assure proper matching of all components, the hose tube material, end fittings, menders and tooling should be purchased directly from Piranha Hose Products, Inc.



FEMALE FITTINGS

PART NO.	USE WITH HOSE SERIES	WEIGHT
F08FS8	LLBU, SLBU, LLGR, SLGR, LHBK, SLLHBK-08	.29 LBS
F12FS12	SPOR, SLSPOR, HPBU, SLHPBU-12	.52 LBS
F16FS16	SPOR, SLSPOR, HPBU, SLHPBU-16	.81 LBS
FAR08FS8	LAGR-08	.38 LBS
FAR12FS12	SAOR, HABU-12	.60 LBS
FAR16FS16	SAOR, HABU-16	.90 LBS
FHP08FS8	SHBK, SLSHBK-08	.32 LBS



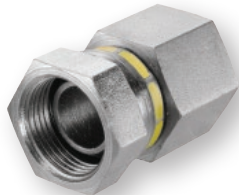
MALE FITTINGS

PART NO.	USE WITH HOSE SERIES	WEIGHT
F06NPT6	LLGR, SLGR-06	.17 LBS
F08NPT8	LLBU, SLBU, LLGR, SLGR, LLRD, SLRD, LHBK, SLLHBK-08	.36 LBS
F10NPT8	SPOR, SLSPOR-10	.36 LBS
F12NPT12	SPOR, SLSPOR, HPBU, SLHPBU-12	.43 LBS
F16NPT16	SPOR, SLSPOR, HPBU, SLHPBU-16	.71 LBS
F20NPT20	SPOR, SLSPOR-20	1.00 LBS
F24NPT24	SPOR, SLSPOR-24	2.52 LBS
FAR08NPT8	LAGR-08	.34 LBS
FAR10NPT8	SAOR-10	.42 LBS
FAR12NPT12	SAOR, HABU-12	.49 LBS
FAR16NPT16	SAOR, HABU-16	.79 LBS
FAR20NPT20	SAOR-20	1.03 LBS
FHP08NPT8	SHBK, SLSHBK-08	.28 LBS
FHP10NPT8	SHBK, SLSHBK-10	.34 LBS



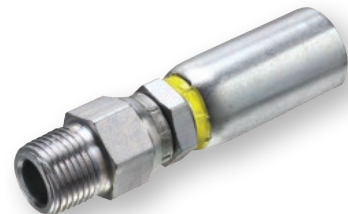
DIES

PART NO.	USE WITH HOSE SERIES	WEIGHT
DS06	LLGR, SLGR-06	2.29 LBS
DS08	LLBU, SLBU, LLGR, SLGR, LHBK, SLLHBK-08	2.19 LBS
DS085	LLRD, SLRD-08	2.20 LBS
DS10	SPOR, SLSPOR-10	1.87 LBS
DS12	SPOR, SLSPOR, HPBU, SLHPBU-12	1.99 LBS
DS16	SPOR, SLSPOR, HPBU, SLHPBU-16	1.74 LBS
DS20	SPOR, SLSPOR-20	1.39 LBS
DSAR08	LAGR-08	2.13 LBS
DSAR12	SAOR, HABU-12	1.9 LBS
DSAR10	SAOR-10	1.97 LBS
DSAR16	SAOR, HABU-16	1.63 LBS
DSAR20	SAOR-20	1.21 LBS
DSHP08	SHBK, SLSHBK-08	2.15 LBS
DSHP10	SHBK, SLSHBK-10	2.18 LBS



FEMALE ADAPTER FITTINGS

PART NO.	USE WITH HOSE SERIES	WEIGHT
A06FPX06FS	LLGR, SLGR-06	.16 LBS
A08FPX08FS	LLBU, SLBU, LLGR, SLGR, LLRD, SLRD, SHBK, SLSHBK, LHBK, SLLHBK, LAGR-08 & SPOR, SLSPOR, SHBK, SLSHBK, SAOR-10	.21 LBS
A12FPX12FS	SPOR, SLSPOR, HPBU, SLHPBU-12	.34 LBS



MALE SWIVEL FITTING

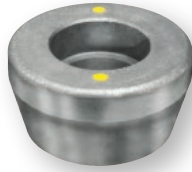
PART NO.	USE WITH HOSE SERIES	WEIGHT
F06MSNPT6	LLGR, SLGR-06	.21 LBS





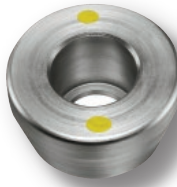
Fittings & Accessories for Piranha Hoses & Swaging Equipment

MALE PUSHERS



PART NO.	USE WITH HOSE SERIES	WEIGHT
DPT06	LLGR, SLGR-06	2.33 LBS
DPT08	LLBU, SLBU, LLGR, SLGR, LLD, SLRD, LHBK, SLLHBK, SHBK, SLSHBK-08 & SHBK, SLSHBK, SPOR, SLSPOR-10	2.23 LBS
DPT12	SPOR, SLSPOR, HPBU, SLHPBU-12	2.11 LBS
DPT16	SPOR, SLSPOR, HPBU, SLHPBU-16	1.81 LBS
DPT20	SPOR, SLSPOR-20	1.66 LBS
DPTAR08	LAGR-08	2.19 LBS
DPTAR10	SAOR-10	2.19 LBS
DPTAR12	SAOR, HABU-12	2.07 LBS
DPTAR16	SAOR, HABU-16	1.77 LBS
DPTAR20	SAOR-20	1.39 LBS

FEMALE PUSHERS



PART NO.	USE WITH HOSE SERIES	WEIGHT
DPT08FS	LLBU, SLBU, LLGR, SLGR, LHBK, SLLHBK, SHBK, SLSHBK-08	2.18 LBS
DPT12FS	SPOR, SLSPOR, HPBU, SLHPBU-12	1.87 LBS
DPT16FS	SPOR, SLSPOR, HPBU, SLHPBU-16	2.18 LBS
DPTAR08FS	LAGR-08	2.75 LBS
DPTAR12FS	SAOR, HABU-12	2.47 LBS
DPTAR16FS	SAOR, HABU-16	2.1 LBS

NOTE: THE USE OF FITTINGS AND ASSEMBLY TOOLING OTHER THAN THAT SUPPLIED BY PIRANHA HOSE PRODUCTS IS AT THE RISK AND LIABILITY OF THE USER.

MENDERS

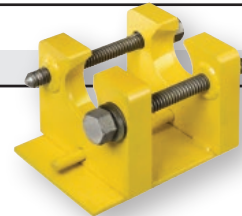


PART NO.	USE WITH HOSE SERIES	WEIGHT
F08MEND	SHBK, SLSHBK-08	.34 LBS
F10MEND	SPOR, SLSPOR-10	.34 LBS
F12MEND	SPOR, SLSPOR, HPBU, SLHPBU-12	.54 LBS
F16MEND	SPOR, SLSPOR, HPBU, SLHPBU-16	.77 LBS
F20MEND	SPOR, SLSPOR-20	1.22 LBS
FAR08MEND	LAGR-08	.39 LBS
FAR12MEND	SAOR, HABU-12	.69 LBS
FAR16MEND	SAOR, HABU-16	.98 LBS
FLL08MEND	LLBU, SLBU, LLGR, SLGR, LHBK, SLLHBK-08	.32 LBS
FA10MEND	SHBK, SLSHBK-10,	.44 LBS

HORIZONTAL SWAGE TOOL

A PIRANHA SUPPLIED SWAGING MACHINE IS REQUIRED FOR THE INSTALLATION OF END FITTINGS AND MENDERS. ALL ASSEMBLY TOOLING IS DESIGNED AND PRODUCED TO BE COMPATIBLE WITH THE PIRANHA HOSE PRODUCTS SUPPLIED SWAGING MACHINES.

PART NO.	WEIGHT
SWAGE HAND	25.5 LBS



HAND OPERATED HYDRAULIC SWAGING MACHINE

PART NO.	WEIGHT
SWAGE-HYD-sales	59 LBS



FOR AVAILABILITY OF PRODUCTS AND SIZES SHOWN, PLEASE REFER TO THE BACK PAGE FOR YOUR NEAREST STOCKING LOCATION. BECAUSE WE CONTINUALLY EXAMINE WAYS TO IMPROVE OUR PRODUCTS, WE RESERVE THE RIGHT TO ALTER SPECIFICATIONS OR DISCONTINUE PRODUCTS WITHOUT PRIOR NOTICE.





New Crimping Equipment

KD165 Package and Components

Now available from Piranha is the KD165 crimping system. This machine is capable of handling all of your assembly needs for Jetting / Lateral Line hose, as well as standard Sewer hose up to 1". This machine with its 60 ton press is built to get the job done.

KD165 Specifications:

- Dimensions L 22" X W 12.5" X H 22.25"
- Weight See Below
- Pump/Power Electric 1 HP (110V)
- Reservoir 1 Gal.
- Oil Type ISO Viscosity Grade 46
- Hose Capacity 1" Jetting / Lateral Line
..... 1" Standard Sewer



KD165 Crimper Without Dies

PART NUMBER	DESCRIPTION	WEIGHT
KuriKrimp™ KD165 Crimper Without Dies: KD165	Hose Crimper 60 Ton	140.0 lbs

KD165-124-PHP System for Piranha® Sewer Hose Fittings

PART NUMBER	DESCRIPTION	WEIGHT
Complete KuriKrimp™ KD165 System For Piranha® Sewer Hose Fittings:		
KD165-124-PHP	Complete System	165.0 lbs
KuriKrimp™ KD165 System Standard Dies for Piranha® Fittings:		
KD100-14/YellowRK	Standard Die 14mm Yellow	3.0 lbs
KD100-16/OrangeRK	Standard Die 16mm Orange	3.0 lbs
KD100-22/BlueRK	Standard Die 22mm Blue	3.0 lbs
KD100-27/BrownRK	Standard Die 27mm Brown	3.0 lbs
KD100-34/RedRK	Standard Die 34mm Red	3.0 lbs

Includes "NEW" KD100 Series Die Kages.



NOTE: THE USE OF FITTINGS AND ASSEMBLY TOOLING OTHER THAN THAT SUPPLIED BY PIRANHA HOSE PRODUCTS IS AT THE RISK AND LIABILITY OF THE USER.



FOR AVAILABILITY OF PRODUCTS AND SIZES SHOWN, PLEASE REFER TO THE BACK PAGE FOR YOUR NEAREST STOCKING LOCATION. BECAUSE WE CONTINUALLY EXAMINE WAYS TO IMPROVE OUR PRODUCTS, WE RESERVE THE RIGHT TO ALTER SPECIFICATIONS OR DISCONTINUE PRODUCTS WITHOUT PRIOR NOTICE.