



MARCH PUMPS

1819 PICKWICK AVE., GLENVIEW, IL 60026-1306, U.S.A
 PHONE: (847) 729-5300 - FAX: (847) 729-7062
 WWW.MARCHPUMP.COM

DESCRIPTION: Series MDX & MDK are centrifugal magnetic drive pumps, eliminating the need for a shaft seal. Pumps can be serviced with a screwdriver. See the parts list for a breakdown of parts.

OPERATION: Pumps are not self-priming, lack a suction lift, and thus require a **flooded suction**. Pumps **cannot be run dry** because the impeller requires the liquid being pumped for lubrication. For liquids with a specific gravity greater than water, have a higher viscosity, or for elevated temperatures, a trimmed impeller may be necessary. For application assistance, contact March Pump.

ELECTRICAL:

The MDX-MT3 & MDK-MT3:

Open air cooled motors are available in different electrical configurations such as 115 V 50/60 Hz, or 230 V 50/60 Hz, 1 phase. Motors have a 3 foot (0.9 m) cord for electrical connections. Motors are U.L. listed as well as rated for continuous operation.

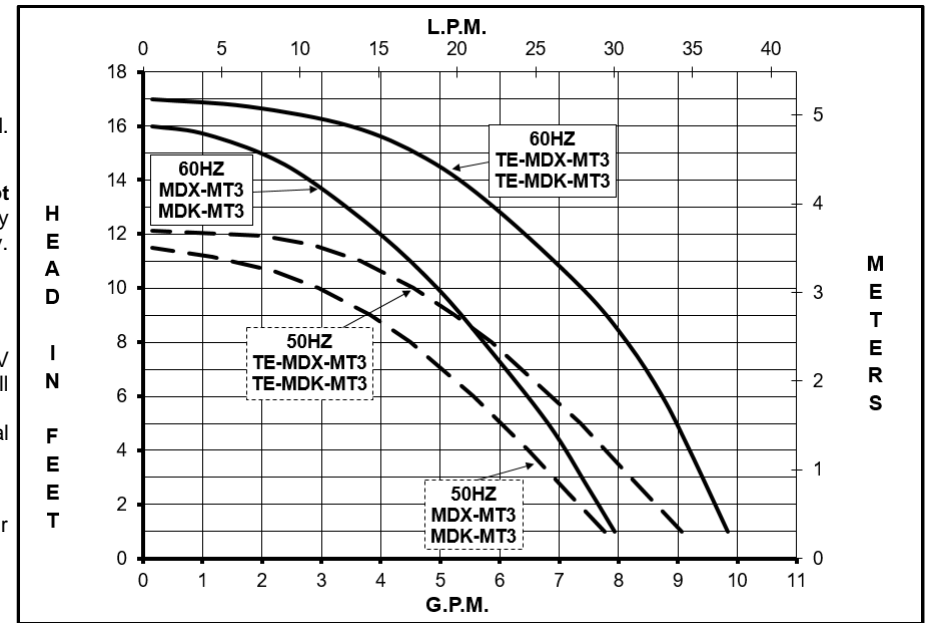
NOTE: The motor is not a combination motor. 115 Volt as well as 230 Volt motors are not 115/230 dual voltage.

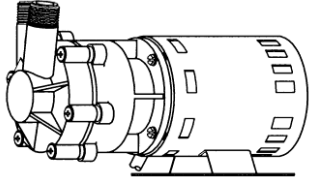
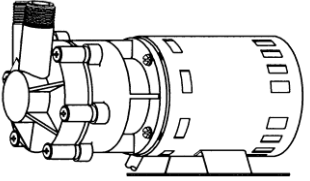
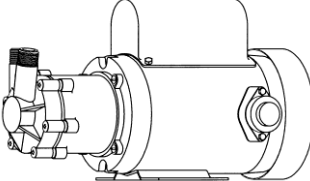
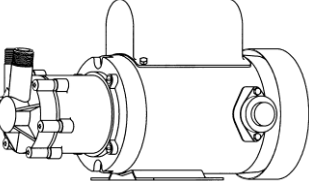
The TE-MDX-MT3 & TE-MDK-MT3:

Motor is totally enclosed fan cooled, dual 115/230 Voltage, 50/60 Hz, 1 phase. Motors have a conduit box for electrical connections. Motors are U.L. listed as well as rated for continuous operation.

Model Abbreviations: X: Ryton, K: Kynar, TE: Totally Enclosed Fan Cooled

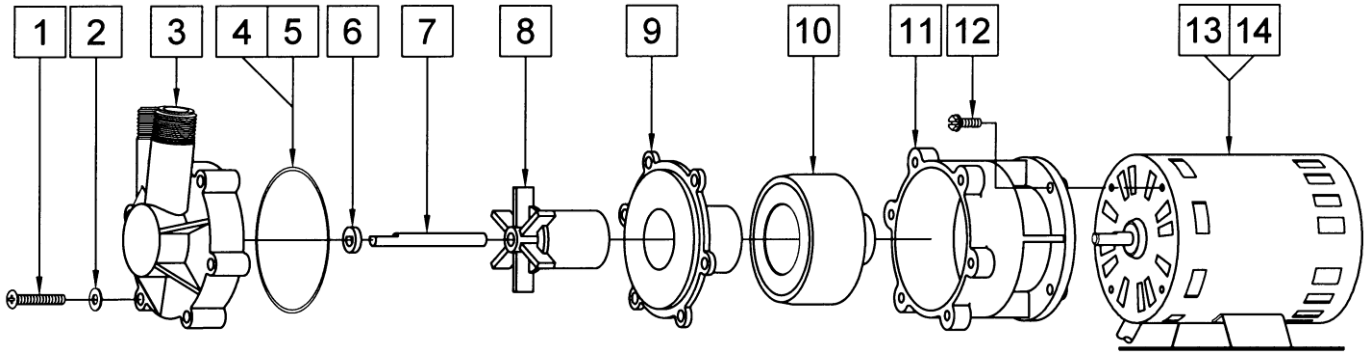
MDX-MT3, TE-MDX-MT3, MDK-MT3, TE-MDK-MT3



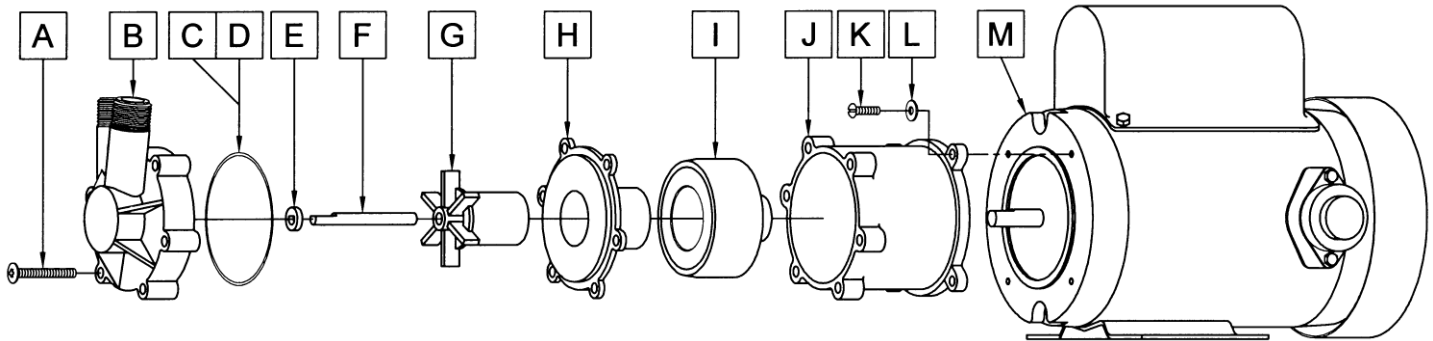
SPECIFICATIONS	MDX-MT3		MDK-MT3		TE-MDX-MT3		TE-MDK-MT3																							
																														
Product #	115 V	0135-0036-0100	0135-0036-0400		0135-0088-0100		0135-0088-0300																							
	230 V	0135-0037-0100	0135-0036-0500																											
Dual Voltage																														
Inlet - Outlet	1/2" MPT - 1/2" MPT		1/2" MPT - 1/2" MPT		1/2" MPT - 1/2" MPT		1/2" MPT - 1/2" MPT																							
Max Internal Pressure	75 psi (517 kPa)		75 psi (517 kPa)		75 psi (517 kPa)		75 psi (517 kPa)																							
Max Liquid Temperature	200 °F (93 °C)		200 °F (93 °C)		200 °F (93 °C)		200 °F (93 °C)																							
MODEL	60 Hz										50 Hz										Height		Width		Length		Packed Weight			
	Max Flow	Max Head	ELECTRICAL								Max Flow	Max Head	ELECTRICAL								Inches	cm	Inches	cm	Inches	cm	lbs	kg		
	gpm	lpm	ft	psi	m	Ph	V	A	Hp	kW	Rpm	gpm	lpm	ft	psi	m	Ph	V	A	Hp	kW	Rpm								
MDX-MT3	8	30.3	16	6.9	4.88	1	115	1.35	1/25	0.03	3450	7.9	30	11.5	4.98	3.5	1	115	1.35	1/25	0.03	2850	4.82	12.2	3.70	9.3	8.41	21.3	5.85	2.65
							230	0.85										230	0.80				4.82	12.2	3.70	9.3	9.02	22.9	6.20	2.81
MDK-MT3	8	30.3	16	6.9	4.88	1	115	1.35	1/25	0.03	3450	7.9	30	11.5	4.98	3.5	1	115	1.35	1/25	0.03	2850	4.82	12.2	3.70	9.3	8.41	21.3	5.85	2.65
							230	0.85										230	0.80				4.82	12.2	3.70	9.3	9.02	22.9	6.20	2.81
TE-MDX-MT3 (Dual Voltage Motor)	10	37.9	17	7.4	5.18	1	115	1.0	1/15	0.05	3450	9.2	35	12.1	5.26	3.7	1	115	1.04	1/15	0.05	2850	7.19	18.3	8.02	20.3	12.42	31.5	20.65	9.3
							230	0.52										230	0.52				7.19	18.3	8.02	20.3	12.42	31.5	20.65	9.3
TE-MDK-MT3 (Dual Voltage Motor)	10	37.9	17	7.4	5.18	1	115	1.0	1/15	0.05	3450	9.2	35	12.1	5.26	3.7	1	115	1.04	1/15	0.05	2850	7.19	18.3	8.02	20.3	12.42	31.5	20.65	9.3
							230	0.52										230	0.52				7.19	18.3	8.02	20.3	12.42	31.5	20.65	9.3

All specifications & data are based on pumping water & are intended as a guideline only. Specifications may vary with different motors.

PARTS LIST



#	DESCRIPTION	MDX-MT3	MDK-MT3	SIZE (Inches)	QTY.	MDX-MT3	MDK-MT3
1	Screw	Stainless		#10-32 x 1-1/8 Lg.	6	0135-0181-1000	
2	Washer	Stainless		#10	6	0150-0051-1000	
3	Front Housing	Ryton	Kynar	1/2 MPT	1	0135-0088-1000	0135-0152-1000
4	"O" Ring	Viton		1/16 CS x 2-7/8 OD	1	0135-0046-1000	
5	"O" Ring (Option)	Teflon		1/16 CS x 2-7/8 OD	1	0135-0122-1000	
6	Thrust Washer	Ceramic			1	0130-0028-1000	
7	Shaft	Ceramic			1	0130-0024-1000	
8	Impeller	Ryton	Kynar		1	0135-0113-0200	0135-0154-0200
9	Rear Housing	Ryton	Kynar		1	0135-0087-1000	0135-0153-1000
10	Drive Magnet			0.250 Bore	1	0130-0043-0100	
11	Motor Bracket	Plastic			1	0135-0135-0100	
12	Screw (Hex Washer Head)	Stainless		#8-32 x 1/2 Lg.	4	0135-0169-1000	
13	Motor, 115 V, 50/60 Hz				1	0135-0114-1000	
14	Motor, 230 V, 50/60 Hz				1	0135-0136-1000	



#	DESCRIPTION	TE-MDX-MT3	TE-MDK-MT3	SIZE (Inches)	QTY.	TE-MDX-MT3	TE-MDK-MT3
A	Screw	Stainless		#10-32 x 1-1/2 Lg.	6	0823-0008-1000	
B	Front Housing	Ryton	Kynar	1/2 MPT	1	0135-0088-1000	0135-0152-1000
C	"O" Ring	Viton		1/16 CS x 2-7/8 OD	1	0135-0046-1000	
D	"O" Ring (Option)	Teflon		1/16 CS x 2-7/8 OD	1	0135-0122-1000	
E	Thrust Washer	Ceramic			1	0130-0028-1000	
F	Shaft	Ceramic			1	0130-0024-1000	
G	Impeller	Ryton	Kynar		1	0135-0113-0200	0135-0154-0200
H	Rear Housing	Ryton	Kynar		1	0135-0087-1000	0135-0153-1000
I	Drive Magnet			0.375 Bore	1	0130-0043-0300	
J	Motor Bracket	Plastic			1	0135-0089-0100	
K	Screw	Stainless		#8-32 x 5/8 Lg.	4	0618-0027-1000	
L	Washer	Stainless		#8	4	0135-0016-1000	
M	Motor, TEFC, 115/230 V, 50/60 Hz				1	0135-0148-1000	

MATERIALS IN CONTACT WITH SOLUTION:

MDX-MT3 & TE-MDX-MT3: Ryton, Ceramic, Viton
MDK-MT3 & TE-MDK-MT3: Kynar, Ceramic, Viton

Explosion proof motors are available upon special order.

NOTE: Contact Factory for other materials and/or parts not listed.

NOTE:

When attaching the Drive Magnet to the motor shaft, position the face of the Drive Magnet 1/16 inch below the face of the Motor Bracket.

LIMITED WARRANTY:

March pumps are guaranteed only against defects in workmanship or materials for a period of one year from date of manufacture pumping water. For the complete warranty and to register online go to www.marchpump.com/warranty-registration