



# MARCH PUMPS

1819 PICKWICK AVE., GLENVIEW, IL 60026-1306, U.S.A  
 PHONE: (847) 729-5300 - FAX: (847) 729-7062  
 WWW.MARCHPUMP.COM

## AC-1A-MD, AC-1C-MD

### DESCRIPTION:

Series 1 are centrifugal magnetic drive pumps, eliminating the need for a shaft seal. Pumps are serviceable with a screwdriver. See below for a breakdown of parts.

### OPERATION:

Pumps are not self-priming, lack a suction lift, and thus require a **flooded suction**. Pumps **cannot be run dry** because the impeller requires the liquid being pumped for lubrication. For application assistance, contact March Pump.

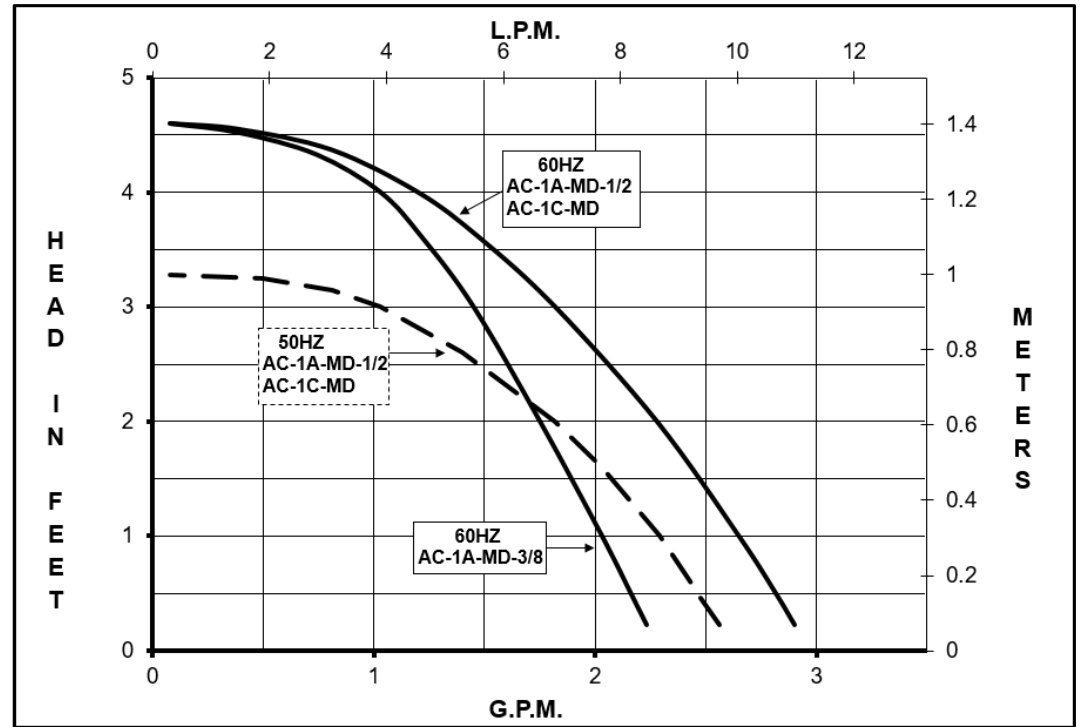
### ELECTRICAL:

Motors are available in different electrical configurations such as 115 volt 60 Hz or 230 volt 50/60 Hz, 1 phase, and rated as continuous duty. Motors are skeleton type. Motors have 16" (40 cm) loose leads.

### LIMITED WARRANTY:

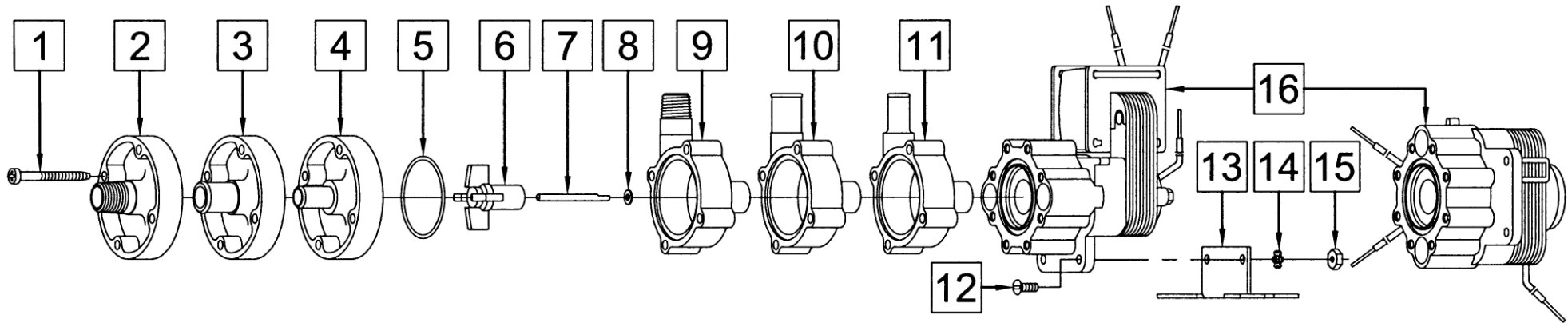
March pumps are guaranteed only against defects in workmanship or materials for a period of one year from date of manufacture pumping water. For the complete warranty and to register online go to [www.marchpump.com/warranty-registration](http://www.marchpump.com/warranty-registration)

**Model Abbreviations:** A: Smooth Inlet/Outlet, C: Threaded Inlet/Outlet



SPECIFICATIONS	AC-1A-MD-3/8										AC-1A-MD-1/2										AC-1C-MD																																						
Product #	115 V					0115-0064-0300					0115-0064-0100					0115-0070-0100					230 V					0115-0064-0400					0115-0064-0200					0115-0071-0100																							
Inlet - Outlet	3/8" OD - 3/8" OD					1/2" OD - 1/2" OD					1/4" MPT - 1/4" MPT					3/8" OD - 3/8" OD					1/2" OD - 1/2" OD					1/4" MPT - 1/4" MPT					3/8" OD - 3/8" OD					1/2" OD - 1/2" OD					1/4" MPT - 1/4" MPT																		
Max Internal Pressure	50 psi (344 kPa)					50 psi (344 kPa)					50 psi (344 kPa)					50 psi (344 kPa)					50 psi (344 kPa)					50 psi (344 kPa)					50 psi (344 kPa)					50 psi (344 kPa)																							
Max Liquid Temperature	190 °F (87 °C)					190 °F (87 °C)					190 °F (87 °C)					190 °F (87 °C)					190 °F (87 °C)					190 °F (87 °C)					190 °F (87 °C)					190 °F (87 °C)																							
MODEL	60 Hz										50 Hz										Height		Width		Length		Packed Weight																																
	Max Flow		Max Head			ELECTRICAL					Max Flow		Max Head			ELECTRICAL					Inches	cm	Inches	cm	Inches	cm	lbs	kg																															
	gpm	lpm	ft	psi	m	Ph	V	A	Hp	kW	Rpm	gpm	lpm	ft	psi	m	Ph	V	A	Hp	kW	Rpm																																					
AC-1A-MD-3/8	2.3	8.7	4.6	2.0	1.4	1	115	0.45	1/200	0.003	3200	2.0	7.5	3.3	1.4	1.0	1	230	0.23	1/200	0.003	2650	3.06	7.7	3.60	9.1	4.38	11.1	1.85	0.83																													
							230	0.23																							1.80	0.81																											
AC-1A-MD-1/2	3.0	11.3	4.6	2.0	1.4	1	115	0.45	1/200	0.003	3200	2.3	9.0	3.3	1.4	1.0	1	230	0.23	1/200	0.003	2650	3.06	7.7	3.60	9.1	4.38	11.1	1.85	0.83																													
							230	0.23																							1.80	0.81																											
AC-1C-MD	3.0	11.3	4.6	2.0	1.4	1	115	0.45	1/200	0.003	3200	2.3	9.0	3.3	1.4	1.0	1	230	0.23	1/200	0.003	2650	3.06	7.7	3.60	9.1	4.38	11.1	1.85	0.83																													
							230	0.23																							1.80	0.81																											

All specifications & data are based on pumping water & are intended as a guideline only. Specifications may vary with different motors.



**AC-1A-MD-3/8**

**AC-1A-MD-1/2**

#	DESCRIPTION	MATERIAL	SIZE (Inches)	QTY.	PART #	#	DESCRIPTION	MATERIAL	SIZE (Inches)	QTY.	PART #
1	Self-Tapping Screw	Stainless	#7-19 x 1-7/16 Lg.	4	0115-0062-1000	1	Self-Tapping Screw	Stainless	#7-19 x 1-7/16 Lg.	4	0115-0062-1000
4	Cover	Polypropylene	3/8 OD Inlet	1	0115-0075-1000	3	Cover	Polypropylene	1/2 OD Inlet	1	0115-0060-1000
5	"O" Ring	Buna N	1/16 CS x 1-7/16 OD	1	0115-0018-1000	5	"O" Ring	Buna N	1/16 CS x 1-7/16 OD	1	0115-0018-1000
6	Impeller	Nylon/Ceramic Magnet		1	0115-0008-0100	6	Impeller	Nylon/Ceramic Magnet		1	0115-0008-0100
7	Shaft	316 Stainless		1	0115-0032-1000	7	Shaft	316 Stainless		1	0115-0032-1000
8	Thrust Washer	Carbon/Teflon		1	0115-0033-1000	8	Thrust Washer	Carbon/Teflon		1	0115-0033-1000
11	Rear Housing	Polypropylene	3/8 OD Outlet	1	0115-0074-1000	10	Rear Housing	Polypropylene	1/2 OD Outlet	1	0115-0059-1000
16	Air Cooled Assembly (115 V 60 Hz)			1	0858-0009-0100	16	Air Cooled Assembly (115 V 60 Hz)			1	0858-0009-0100
	Air Cooled Assembly (230 V 50/60 Hz)			1	0858-0013-0100		Air Cooled Assembly (230 V 50/60 Hz)			1	0858-0013-0100

**AC-1C-MD**

**OPTIONS**

#	DESCRIPTION	MATERIAL	SIZE (Inches)	QTY.	PART #	#	DESCRIPTION	MATERIAL	SIZE (Inches)	QTY.	PART #
1	Self-Tapping Screw	Stainless	#7-19 x 1-7/16 Lg.	4	0115-0062-1000	3	Cover	Kynar	1/2 OD Inlet	1	0115-0096-1000
2	Cover	Polypropylene	1/4 MPT Inlet	1	0115-0058-1000	5	"O" Ring	Viton	1/16 CS x 1-7/16 OD	1	0115-0061-1000
5	"O" Ring	Buna N	1/16 CS x 1-7/16 OD	1	0115-0018-1000	5	"O" Ring	Teflon		1	0115-0069-1000
6	Impeller	Nylon/Ceramic Magnet		1	0115-0008-0100	6	Impeller	Kynar/Ceramic Magnet		1	0115-0097-0100
7	Shaft	316 Stainless		1	0115-0032-1000	10	Rear Housing	Kynar	1/2 OD Outlet	1	0115-0095-1000
8	Thrust Washer	Carbon/Teflon		1	0115-0033-1000	12	Screw	Stainless	#6-32 x 3/8 Lg.	2	0455-0038-1000
9	Rear Housing	Polypropylene	1/4 MPT Outlet	1	0115-0057-1000	13	Base	Stainless		1	0115-0081-1000
16	Air Cooled Assembly (115 V 60 Hz)			1	0858-0009-0100	14	Lock Washer	Stainless	#6	2	0455-0037-1000
	Air Cooled Assembly (230 V 50/60 Hz)			1	0858-0013-0100	15	Nut	Steel	#6-32	2	0455-0043-1000

**Materials in Contact with Solution:**

Polypropylene, Nylon, Buna N, 316 Stainless Steel, Ceramic Magnet, & Carbon/Teflon Washer

NOTE: Contact Factory for other materials and/or parts not listed.

0115-0035-1100 R4