



MARCH PUMPS

1819 PICKWICK AVE., GLENVIEW, IL 60026-1306, U.S.A
 PHONE: (847) 729-5300 - FAX: (847) 729-7062
 WWW.MARCHPUMP.COM

1A-MD, 1C-MD, 1U-MD

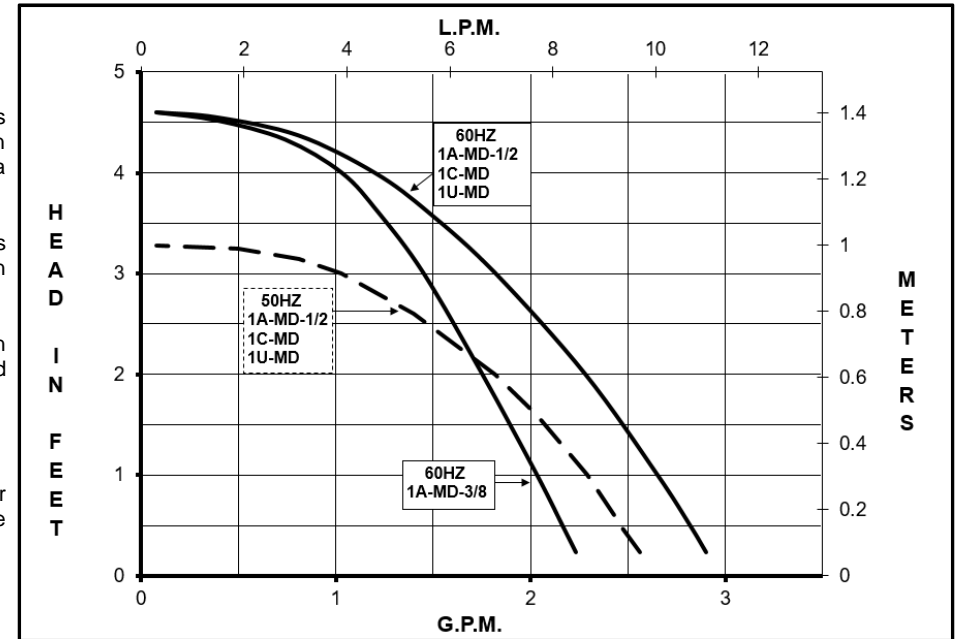
DESCRIPTION: Series 1 are centrifugal magnetic drive pumps, eliminating the need for a shaft seal. Pumps are serviceable with a screwdriver. The models are hermetically encapsulated, which allows the pumps to run fully submerged in many liquids or in open air for complete moisture protection. See the parts list for a breakdown of parts.

OPERATION: Pumps are not self-priming, lack a suction lift, and thus require a **flooded suction**. Pumps **cannot be run dry** because the impeller requires the liquid being pumped for lubrication. For application assistance, contact March Pump.

ELECTRICAL: The models are U.L. Recognized under the U.L. component program. U.L. Recognition On Pumps Is For Water Only. Motors are totally enclosed submersible 115 volt 50/60 Hz or 230 volt 50/60 Hz and are rated for continuous duty.
 - 115 Volt Motors have a 6-foot (1.8 m) long cord with plug.
 - 230 Volt Motors have a 6-foot (1.8 m) long cord without a plug.

LIMITED WARRANTY: March pumps are guaranteed only against defects in workmanship or materials for a period of one year from date of manufacture pumping water. For the complete warranty and to register online go to www.marchpump.com/warranty-registration

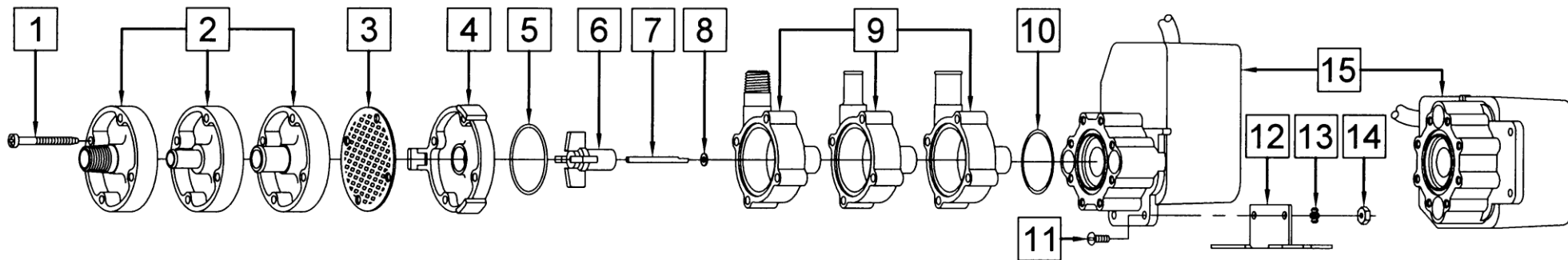
Model Abbreviations: A: Smooth Inlet/Outlet, C: Threaded Inlet/Outlet, U: Screen Inlet



SPECIFICATIONS	1A-MD-3/8		1A-MD-1/2		1C-MD		1U-MD																								
Product #	115 V	0115-0007-0100	0115-0007-0200	0115-0007-0300	0115-0007-0400																										
	230 V	0115-0007-0600	0115-0007-0700	0115-0007-0800	0115-0007-0900																										
Inlet - Outlet		3/8" OD - 3/8" OD	1/2" OD - 1/2" OD	1/4" MPT - 1/4" MPT	Screen - 1/4" MPT																										
Max Internal Pressure		50 psi (344 kPa)	50 psi (344 kPa)	50 psi (344 kPa)	50 psi (344 kPa)																										
Max Liquid Temperature		190 °F (87 °C) open air 160 °F / 71 °C submersible	190 °F (87 °C) open air 160 °F / 71 °C submersible	190 °F (87 °C) open air 160 °F / 71 °C submersible	190 °F (87 °C) open air 160 °F / 71 °C submersible																										
MODEL	60 Hz											50 Hz											Height		Width		Length		Packed Weight		
	Max Flow		Max Head		ELECTRICAL							Max Flow		Max Head		ELECTRICAL							Inches	cm	Inches	cm	Inches	cm	lbs	kg	
	gpm	lpm	ft	psi	m	Ph	V	A	Hp	kW	Rpm	gpm	lpm	ft	psi	m	Ph	V	A	Hp	kW	Rpm									
1A-MD-3/8	2.3	8.7	4.6	2.0	1.4	1	115	0.45	1/200	0.003	3200	2.0	7.5	3.3	1.4	1.0	1	115	0.45	1/200	0.003	2650	3.17	8.1	3.75	9.5	4.44	11.3	2.65	1.20	
							230	0.23										230	0.23											2.60	1.17
1A-MD-1/2	3.0	11.3	4.6	2.0	1.4	1	115	0.45	1/200	0.003	3200	2.3	9.0	3.3	1.4	1.0	1	115	0.45	1/200	0.003	2650	3.17	8.1	3.75	9.5	4.44	11.3	2.65	1.20	
							230	0.23										230	0.23											2.60	1.17
1C-MD	3.0	11.3	4.6	2.0	1.4	1	115	0.45	1/200	0.003	3200	2.3	9.0	3.3	1.4	1.0	1	115	0.45	1/200	0.003	2650	3.17	8.1	3.75	9.5	4.44	11.3	2.60	1.17	
							230	0.23										230	0.23											2.55	1.15
1U-MD	3.0	11.3	4.6	2.0	1.4	1	115	0.45	1/200	0.003	3200	2.3	9.0	3.3	1.4	1.0	1	115	0.45	1/200	0.003	2650	3.17	8.1	3.75	9.5	3.83	9.7	2.65	1.20	
							230	0.23										230	0.23											2.65	1.20

All specifications & data are based on pumping water & are intended as a guideline only. Specifications may vary with different motors.

PARTS LIST



1A-MD-3/8

#	DESCRIPTION	MATERIAL	SIZE (Inches)	QTY.	PART #
1	Self-Tapping Screw	Stainless	#7-19 x 1-7/16 Lg.	4	0115-0062-1000
2	Cover	Polypropylene	3/8 OD Inlet	1	0115-0075-1000
5	"O" Ring (Cover)	Buna N	1/16 CS x 1-7/16 OD	1	0115-0018-1000
6	Impeller	Nylon/Ceramic Magnet		1	0115-0008-0100
7	Shaft	316 Stainless		1	0115-0032-1000
8	Thrust Washer	Carbon/Teflon		1	0115-0033-1000
9	Rear Housing	Polypropylene	3/8 OD Outlet	1	0115-0074-1000
10	"O" Ring (Bracket)	Buna N	1/16 CS x 1-5/16 OD	1	0115-0017-1000
15	Epoxy Motor, Bracket, Cord Assy. (115 V 50/60 Hz) or (230 V 50/60 Hz)			n/a	Not Available

1A-MD-1/2

#	DESCRIPTION	MATERIAL	SIZE (Inches)	QTY.	PART #
1	Self-Tapping Screw	Stainless	#7-19 x 1-7/16 Lg.	4	0115-0062-1000
2	Cover	Polypropylene	1/2 OD Inlet	1	0115-0060-1000
5	"O" Ring (Cover)	Buna N	1/16 CS x 1-7/16 OD	1	0115-0018-1000
6	Impeller	Nylon/Ceramic Magnet		1	0115-0008-0100
7	Shaft	316 Stainless		1	0115-0032-1000
8	Thrust Washer	Carbon/Teflon		1	0115-0033-1000
9	Rear Housing	Polypropylene	1/2 OD Outlet	1	0115-0059-1000
10	"O" Ring (Bracket)	Buna N	1/16 CS x 1-5/16 OD	1	0115-0017-1000
15	Epoxy Motor, Bracket, Cord Assy. (115 V 50/60 Hz) or (230 V 50/60 Hz)			n/a	Not Available

1C-MD

#	DESCRIPTION	MATERIAL	SIZE (Inches)	QTY.	PART #
1	Self-Tapping Screw	Stainless	#7-19 x 1-7/16 Lg.	4	0115-0062-1000
2	Cover	Polypropylene	1/4 MPT Inlet	1	0115-0058-1000
5	"O" Ring (Cover)	Buna N	1/16 CS x 1-7/16 OD	1	0115-0018-1000
6	Impeller	Nylon/Ceramic Magnet		1	0115-0008-0100
7	Shaft	316 Stainless		1	0115-0032-1000
8	Thrust Washer	Carbon/Teflon		1	0115-0033-1000
9	Rear Housing	Polypropylene	1/4 MPT Outlet	1	0115-0057-1000
10	"O" Ring (Bracket)	Buna N	1/16 CS x 1-5/16 OD	1	0115-0017-1000
15	Epoxy Motor, Bracket, Cord Assy. (115 V 50/60 Hz) or (230 V 50/60 Hz)			n/a	Not Available

1U-MD

#	DESCRIPTION	MATERIAL	SIZE (Inches)	QTY.	PART #
1	Self-Tapping Screw	Stainless	#7-19 x 1-7/16 Lg.	4	0115-0062-1000
3	Inlet Screen	Delrin		1	0115-0012-1000
4	Cover	Cyclocac		1	0115-0016-1000
5	"O" Ring (Cover)	Buna N	1/16 CS x 1-7/16 OD	1	0115-0018-1000
6	Impeller	Nylon/Ceramic Magnet		1	0115-0008-0100
7	Shaft	316 Stainless		1	0115-0032-1000
8	Thrust Washer	Carbon/Teflon		1	0115-0033-1000
9	Rear Housing	Polypropylene	1/4 MPT Outlet	1	0115-0057-1000
10	"O" Ring (Bracket)	Buna N	1/16 CS x 1-5/16 OD	1	0115-0017-1000
15	Epoxy Motor, Bracket, Cord Assy. (115 V 50/60 Hz) or (230 V 50/60 Hz)			n/a	Not Available

OPTIONS

#	DESCRIPTION	MATERIAL	SIZE (Inches)	QTY.	PART #
2	Cover	Kynar	1/2 OD Inlet	1	0115-0096-1000
5	"O" Ring (Cover)	Viton	1/16 CS x 1-7/16 OD	1	0115-0061-1000
5	"O" Ring (Cover)	Teflon	1/16 CS x 1-7/16 OD	1	0115-0069-1000
6	Impeller	Kynar/Ceramic Magnet		1	0115-0097-0100
9	Rear Housing	Kynar	1/2 OD Outlet	1	0115-0095-1000
11	Screw	Stainless	#6-32 x 3/8 Lg.	2	0455-0038-1000
12	Base	Stainless		1	0115-0081-1000
13	Lock Washer	Stainless	#6	2	0455-0037-1000
14	Nut	Steel	#6-32	2	0455-0043-1000

Materials in Contact with Solution:

Open Air:

Polypropylene, Nylon, Buna N, 316 Stainless Steel, Ceramic Magnet, & Carbon/Teflon Washer.

When Submerged:

The following additional materials are in contact: Epoxy, Noryl, Cyclocac, Delrin, and SJT cord.

NOTE: Contact Factory for other materials and/or parts not listed.

0115-0035-1000 R31