



PRODUCT CATALOG 2017

PH: 310-516-1534 FAX: 310-516-1534 WWW.LGVCOUPLING.COM

UPDATED APRIL 2017



ABOUT US

LGV Coupling, Inc is a family oriented business with 30 years of experience in the coupling manufacturing industry. We specialize in the production of fittings, ferrules and sleeves that have been put to work for the concrete, food and beverage, chemical, petroleum, fire and other industries. We pride ourselves on superior service and premium quality products. No matter the quantity of the job, we can help you fit your application.

ORGANIZATIONS LGV IS PART OF



Certificate available online



TABLE OF CONTENTS



INDUSTRIAL

INDUSTRIAL LINE	6
Cam & Groove Couplings	6
Crimp Fittings	8
Crimp Ferrules	10
Crimp Sleeves	14
Mandrel Expansion Fittings	18
Mandrel Expansion Ferrules	20
Weld-Ons	23



SANITARY

SANITARY LINE	24
Crimp Fittings	24
Crimp Ferrules	29
Crimp Sleeves	30
Mandrel Expansion Fittings	31
Finger Expansion	34
Internal Expansion Ferrules	36
Wine & Brewery	38



SANITARY

ACCESSORIES

ACCESSORIES	41
Nuts	
Adaptors	
Caps	
Elbows	



OTHER

Our Mission	4
What We Do	4
Terms & Conditions	4
Understanding LGV Part Number	5
Index of Parts	45
Warranty	47

OUR MISSION

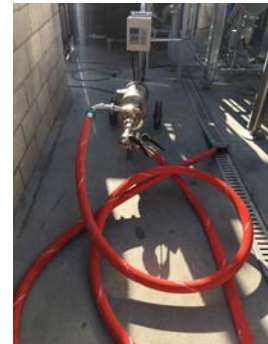
Our goal is to establish long-term relationships with our customers by offering high quality products and services as well as ensuring a high level of satisfaction with our outstanding performance. Moreover, we are a reliable organization that ensure that your needs will be handled with professionalism, punctuality and fairness.

WHAT WE DO

We offer a large selection of parts available in internal expansion and external crimp. Our couplings range in size from 1" up to 4" in Groove-End, Butt-Weld and NPT Pipe ends. Our standard materials include 304 stainless steel and plated carbon steel, however we are able to work with other materials in order to fit our customer's needs. We specialize in custom machining to our customers specifications.

LGV serves the following Industries:

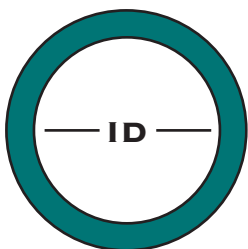
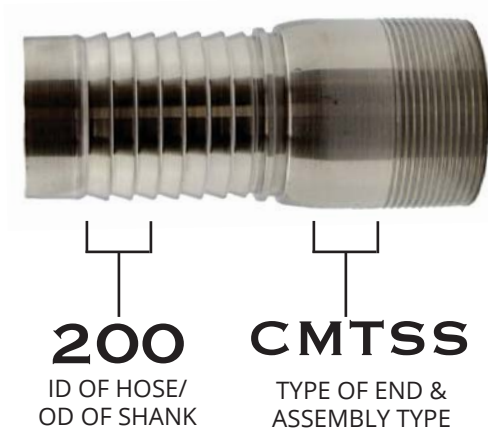
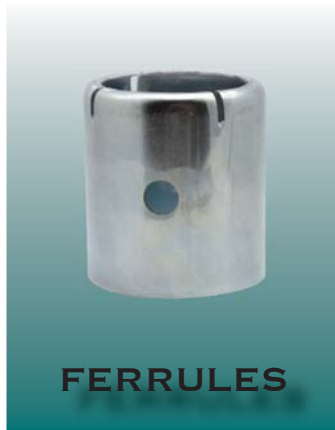
- Fire
- Concrete
- Petroleum
- Chemical Plants
- Wineries
- Marine
- Breweries
- Dairies
- Distilleries
- Food-Processing
- Automotive
- Oil & Gas



TERMS AND CONDITIONS

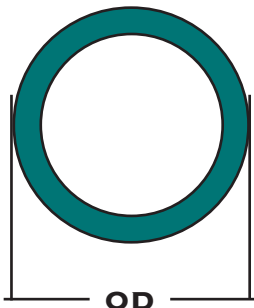
- Minimum purchase order is of \$50.00
- Contact us for more information on eligibility for free shipping
- Returns or exchanges must be done within 90 days of invoice date and a 25% restocking fee may apply.
- Limited warranty, if used properly and assembled with LGV products, is for one year.

LGV PART NUMBERS



INNER DIAMETER OF THE HOSE (ID)

This dimension will help determine the size of the hose shank that must be used



OUTER DIAMETER OF THE HOSE (OD)

This dimension will help determine the size of the ferrule or sleeve that must be used

For example, if the OD of the hose is 2.642, then the size of the ferrule/sleeve that should be used is:

- Internal Expansion: 200-221 (2.656 ID)
- Crimp Ferrule/Sleeve: 200-222 (2.686 ID)

Quick Note: When the OD of the hose is determined, match it with the closest ID of a ferrule/sleeve

- For internal expansion, add 1/32's more to choose the correct ferrule to use on the hose with the shank inside
- For crimp, add 2/32's more to choose the correct ferrule/sleeve to use on the hose with the shank inside.

BASIC 8 CAMLOCK COUPLINGS

Cam and Groove Couplings are AA-356T6 Heat Treated Aluminum.
Machine shank fittings.



Type A - Aluminum

Size	Part Number
1"	LGV100A-AL
1 1/2"	LGV150A-AL
2"	LGV200A-AL
3"	LGV300A-AL
4"	LGV400A-AL
6"	LGV600A-AL



Type B - Aluminum

Size	Part Number
1"	LGV100B-AL
1 1/2"	LGV150B-AL
2"	LGV200B-AL
3"	LGV300B-AL
4"	LGV400B-AL
6"	LGV600B-AL



Type C - Aluminum

Size	Part Number
1"	LGV100C-AL
1 1/2"	LGV150C-AL
2"	LGV200C-AL
3"	LGV300C-AL
4"	LGV400C-AL
6"	LGV600C-AL



Type D - Aluminum

Size	Part Number
1"	LGV100D-AL
1 1/2"	LGV150D-AL
2"	LGV200D-AL
3"	LGV300D-AL
4"	LGV400D-AL
6"	LGV600D-AL

BASIC 8 CAMLOCK COUPLINGS

Cam and Groove Couplings are AA-356T6 Heat Treated Aluminum.
Machine shank fittings.



Type E - Aluminum

Size	Part Number
1"	LGV100E-AL
1 1/2"	LGV150E-AL
2"	LGV200E-AL
3"	LGV300E-AL
4"	LGV400E-AL
6"	LGV600E-AL



Type F - Aluminum

Size	Part Number
1"	LGV100F-AL
1 1/2"	LGV150F-AL
2"	LGV200F-AL
3"	LGV300F-AL
4"	LGV400F-AL
6"	LGV600F-AL



Type DC - Aluminum

Size	Part Number
1"	LGV100DC-AL
1 1/2"	LGV150DC-AL
2"	LGV200DC-AL
3"	LGV300DC-AL
4"	LGV400DC-AL
6"	LGV600DC-AL



Type DP - Aluminum

Size	Part Number
1"	LGV100DP-AL
1 1/2"	LGV150DP-AL
2"	LGV200DP-AL
3"	LGV300DP-AL
4"	LGV400DP-AL
6"	LGV600DP-AL

INDUSTRIAL CRIMP

All items on this page are domestic, made in the U.S.A. Standard material is 304 stainless steel. 316 stainless steel is available upon request. LGV has capabilities of customizing product to thicker material or making fitting a jump-size. Please call for more questions

Butt-Weld Pipe (SCH 40 Weld-On)



Size	304 Stainless	Plated Steel
1 1/2"	150BWPCSS	150BWPPCS
2"	200BWPCSS	200BWPPCS
2 1/2"	250BWPCSS	250BWPPCS
3"	300BWPCSS	300BWPPCS
4"	400BWPCSS	400BWPPCS

Crimp Male Thread (NPT Pipe Thread)



Size	304 Stainless	Plated Steel
3/4"	075CMTSS	075CMTPS
1"	100CMTSS	100CMTPS
1 1/4"	125CMTSS	125CMTPS
1 1/2"	150CMTSS	150CMTPS
2"	200CMTSS	200CMTPS
2 1/2"	250CMTSS	250CMTPS
3"	300CMTSS	300CMTPS
4"	400CMTSS	400CMTPS

Crimp Victaulic (Groove-End)



Size	304 Stainless	Plated Steel
3/4"	075VCSS	075VCPS
1"	100VCSS	100VCPS
1 1/4"	125VCSS	125VCPS
1 1/2"	150VCSS	150VCPS
2"	200VCSS	200VCPS
2 1/2"	250VCSS	250VCPS
3"	300VCSS	300VCPS
4"	400VCSS	400VCPS

INDUSTRIAL CRIMP

All items on this page are domestic, made in the U.S.A. Standard material is 304 stainless steel. 316 stainless steel is available upon request. LGV has capabilities of customizing product to thicker material or making fitting a jump-size. Please call for more questions



King Combination Nipple

Size	304 Stainless	Plated Steel
1 1/2"	150KCNSS	150KCNPS
2"	200KCNSS	200KCNPS
3"	300KCNSS	300KCNPS
4"	400KCNSS	400KCNPS



Heavy End Concrete (Heat Treated)



Size	Carbon Steel
2"	200HEHTCS
2 1/2"	250HEHTCS

GOT A SPECIAL DESIGN?

Let us bring your design to life with our custom capabilities!



Jump-Size
(1" Crimp Shank by 3/4" Male Thread)



Composite Fittings
(Must provide dimensions needed)

INDUSTRIAL CRIMP

All items on this page are domestic, made in the U.S.A. This ferrule is smooth from the inside. LGV has capabilities of customizing product to the length required or thicker material. Please call for more questions.



External Crimp Ferrule



Size	304 Stainless	Plated Steel	ID Dimension
3/4"	075-102ECFSS	075-102ECFPS	1.063
3/4"	075-104ECFSS	075-104ECFPS	1.125
3/4"	075-106ECFSS	075-106ECFPS	1.188
3/4"	075-108ECFSS	075-108ECFPS	1.250
3/4"	075-110ECFSS	075-110ECFPS	1.313
3/4"	075-112ECFSS	075-112ECFPS	1.375
1"	100-114ECFSS	100-114ECFPS	1.438
1"	100-116ECFSS	100-116ECFPS	1.500
1"	100-118ECFSS	100-118ECFPS	1.563
1"	100-120ECFSS	100-120ECFPS	1.625
1"	100-122ECFSS	100-122ECFPS	1.688
1"	100-124ECFSS	100-124ECFPS	1.750
1 1/4"	125-122ECFSS	125-122ECFPS	1.688
1 1/4"	125-124ECFSS	125-124ECFPS	1.750
1 1/4"	125-126ECFSS	125-126ECFPS	1.813
1 1/4"	125-128ECFSS	125-128ECFPS	1.875
1 1/4"	125-130ECFSS	125-130ECFPS	1.938
1 1/4"	125-200ECFSS	125-200ECFPS	2.000
1 1/2"	150-128ECFSS	150-128ECFPS	1.875
1 1/2"	150-130ECFSS	150-130ECFPS	1.938
1 1/2"	150-200ECFSS	150-200ECFPS	2.000
1 1/2"	150-202ECFSS	150-202ECFPS	2.063
1 1/2"	150-204ECFSS	150-204ECFPS	2.125
1 1/2"	150-206ECFSS	150-206ECFPS	2.188
1 1/2"	150-208ECFSS	150-208ECFPS	2.250
1 1/2"	150-210ECFSS	150-210ECFPS	2.313
1 1/2"	150-212ECFSS	150-212ECFPS	2.375
1 1/2"	150-214ECFSS	150-214ECFPS	2.438

INDUSTRIAL CRIMP

All items on this page are domestic, made in the U.S.A. This ferrule is smooth from the inside. LGV has capabilities of customizing product to the length required or thicker material. Please call for more questions.



External Crimp Ferrule



Size	304 Stainless	Plated Steel	ID Dimension
2"	200-214ECFSS	200-214ECFPS	2.438
2"	200-216ECFSS	200-216ECFPS	2.500
2"	200-218ECFSS	200-218ECFPS	2.563
2"	200-220ECFSS	200-220ECFPS	2.625
2"	200-222ECFSS	200-222ECFPS	2.688
2"	200-224ECFSS	200-224ECFPS	2.750
2"	200-226ECFSS	200-226ECFPS	2.813
2"	200-228ECFSS	200-228ECFPS	2.875
2"	200-230ECFSS	200-230ECFPS	2.938
2"	200-300ECFSS	200-300ECFPS	3.000
2"	200-302ECFSS	200-302ECFPS	3.063
2"	200-304ECFSS	200-304ECFPS	3.125
2 1/2"	250-300ECFSS	250-300ECFPS	3.000
2 1/2"	250-302ECFSS	250-302ECFPS	3.063
2 1/2"	250-304ECFSS	250-304ECFPS	3.125
2 1/2"	250-306ECFSS	250-306ECFPS	3.188
2 1/2"	250-308ECFSS	250-308ECFPS	3.250
2 1/2"	250-310ECFSS	250-310ECFPS	3.313
2 1/2"	250-312ECFSS	250-312ECFPS	3.375
2 1/2"	250-314ECFSS	250-314ECFPS	3.438
2 1/2"	250-316ECFSS	250-316ECFPS	3.500
3"	300-312ECFSS	300-312ECFPS	3.375
3"	300-314ECFSS	300-314ECFPS	3.438
3"	300-316ECFSS	300-316ECFPS	3.500
3"	300-318ECFSS	300-318ECFPS	3.563
3"	300-320ECFSS	300-320ECFPS	3.625
3"	300-322ECFSS	300-322ECFPS	3.688
3"	300-324ECFSS	300-324ECFPS	3.750

INDUSTRIAL CRIMP

All items on this page are domestic, made in the U.S.A. This ferrule is smooth from the inside. LGV has capabilities of customizing product to the length required or thicker material. Part numbers ending with "H" are heavy wall ferrules. Please call for more questions.



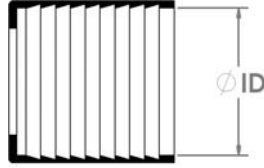
External Crimp Ferrule



Size	304 Stainless	Plated Steel	ID Dimension
3"	300-326ECFSS	300-326ECFPS	3.813
3"	300-328ECFSS	300-328ECFPS	3.875
3"	300-330ECFSS	300-330ECFPS	3.938
3"	300-400ECFSS	300-400ECFPS	4.000
3"	300-402ECFSS	300-402ECFPS	4.063
3"	300-404ECFSS	300-404ECFPS	4.125
4"	400-412ECFSS	400-412ECFPS	4.375
4"	400-414ECFSS	400-414ECFPS	4.438
4"	400-416ECFSS	400-416ECFPS	4.500
4"	400-418ECFSS	400-418ECFPS	4.563
4"	400-420ECFSS	400-420ECFPS	4.625
4"	400-422ECFSS	400-422ECFPS	4.688
4"	400-424ECFSS	400-424ECFPS	4.750
4"	400-426ECFSS	400-426ECFPS	4.813
4"	400-428ECFSS	400-428ECFPS	4.875
4"	400-430ECFSS	400-430ECFPS	4.938
4"	400-500ECFSS	400-500ECFPS	5.000
4"	400-502ECFSS	400-502ECFPS	5.063
4"	400-504ECFSS	400-504ECFPS	5.125
4"	N/A	400-416ECFPSH	4.500
4"	N/A	400-418ECFPSH	4.563
4"	N/A	400-420ECFPSH	4.625
4"	N/A	400-422ECFPSH	4.688
4"	N/A	400-424ECFPSH	4.750
4"	N/A	400-426ECFPSH	4.813
4"	N/A	400-428ECFPSH	4.875
4"	N/A	400-430ECFPSH	4.938
4"	N/A	400-500ECFPSH	5.000

INDUSTRIAL CRIMP

All items on this page are domestic, made in the U.S.A. This ferrule is serrated from the inside. LGV has capabilities of customizing product to the length required or thicker material. Part numbers ending with "H" are heavy wall ferrules. Please call for more questions.



External Crimp Heavy-Duty Serrated Ferrule



Size	304 Stainless	Plated Steel	ID Dimension
1"	100-118ECFHDSS	100-118ECFHDPS	1.563
1"	100-120ECFHDSS	100-120ECFHDPS	1.625
1"	100-122ECFHDSS	100-122ECFHDPS	1.688
1 1/2"	150-202ECFHDSS	150-202ECFHDPS	2.062
1 1/2"	150-204ECFHDSS	150-204ECFHDPS	2.125
1 1/2"	150-206ECFHDSS	150-206ECFHDPS	2.188
1 1/2"	150-208ECFHDSS	150-208ECFHDPS	2.250
1 1/2"	150-210ECFHDSS	150-210ECFHDPS	2.313
2"	200-222ECFHDSS	200-222ECFHDPS	2.688
2"	200-224ECFHDSS	200-224ECFHDPS	2.750
2"	200-226ECFHDSS	200-226ECFHDPS	2.813
2"	200-228ECFHDSS	200-228ECFHDPS	2.875
2"	200-230ECFHDSS	200-230ECFHDPS	2.938
2 1/2"	250-306ECFHDSS	250-306ECFHDPS	3.188
2 1/2"	250-308ECFHDSS	250-308ECFHDPS	3.250
2 1/2"	250-310ECFHDSS	250-310ECFHDPS	3.313
3"	300-322ECFHDSS	300-322ECFHDPS	3.688
3"	300-324ECFHDSS	300-324ECFHDPS	3.750
3"	300-326ECFHDSS	300-326ECFHDPS	3.813
3"	300-328ECFHDSS	300-328ECFHDPS	3.875
4"	400-422ECFHDSS	400-422ECFHDPS	4.688
4"	400-424ECFHDSS	400-424ECFHDPS	4.750
4"	400-426ECFHDSS	400-426ECFHDPS	4.813
4"	400-428ECFHDSS	400-428ECFHDPS	4.875

INDUSTRIAL CRIMP

All items on this page are domestic, made in the U.S.A. LGV has capabilities of customizing product to the length required or thicker material. Please call for more questions.



External Crimp Sleeve



Size	304 Stainless	Plated Steel	ID Dimension
3/4"	075-102ECSSS	075-102ECSPS	1.063
3/4"	075-104ECSSS	075-104ECSPS	1.125
3/4"	075-106ECSSS	075-106ECSPS	1.188
3/4"	075-108ECSSS	075-108ECSPS	1.250
3/4"	075-110ECSSS	075-110ECSPS	1.313
3/4"	075-112ECSSS	075-112ECSPS	1.375
1"	100-114ECSSS	100-114ECSPS	1.438
1"	100-116ECSSS	100-116ECSPS	1.500
1"	100-118ECSSS	100-118ECSPS	1.563
1"	100-120ECSSS	100-120ECSPS	1.625
1"	100-122ECSSS	100-122ECSPS	1.688
1"	100-124ECSSS	100-124ECSPS	1.750
1 1/4"	125-122ECSSS	125-122ECSPS	1.688
1 1/4"	125-124ECSSS	125-124ECSPS	1.750
1 1/4"	125-126ECSSS	125-126ECSPS	1.813
1 1/4"	125-128ECSSS	125-128ECSPS	1.875
1 1/4"	125-130ECSSS	125-130ECSPS	1.938
1 1/4"	125-200ECSSS	125-200ECSPS	2.000
1 1/2"	150-128ECSSS	150-128ECSPS	1.875
1 1/2"	150-130ECSSS	150-130ECSPS	1.938
1 1/2"	150-200ECSSS	150-200ECSPS	2.000
1 1/2"	150-202ECSSS	150-202ECSPS	2.063
1 1/2"	150-204ECSSS	150-204ECSPS	2.125
1 1/2"	150-206ECSSS	150-206ECSPS	2.188
1 1/2"	150-208ECSSS	150-208ECSPS	2.250
1 1/2"	150-210ECSSS	150-210ECSPS	2.313
1 1/2"	150-212ECSSS	150-212ECSPS	2.375
1 1/2"	150-214ECSSS	150-214ECSPS	2.438

INDUSTRIAL CRIMP

All items on this page are domestic, made in the U.S.A. LGV has capabilities of customizing product to the length required or thicker material. Please call for more questions.



External Crimp Sleeve



Size	304 Stainless	Plated Steel	ID Dimension
2"	200-214ECSSS	200-214ECSPS	2.438
2"	200-216ECSSS	200-216ECSPS	2.500
2"	200-218ECSSS	200-218ECSPS	2.563
2"	200-220ECSSS	200-220ECSPS	2.625
2"	200-222ECSSS	200-222ECSPS	2.688
2"	200-224ECSSS	200-224ECSPS	2.750
2"	200-226ECSSS	200-226ECSPS	2.813
2"	200-228ECSSS	200-228ECSPS	2.875
2"	200-230ECSSS	200-230ECSPS	2.938
2"	200-300ECSSS	200-300ECSPS	3.000
2"	200-302ECSSS	200-302ECSPS	3.063
2"	200-304ECSSS	200-304ECSPS	3.125
2 1/2"	250-300ECSSS	250-300ECSPS	3.000
2 1/2"	250-302ECSSS	250-302ECSPS	3.063
2 1/2"	250-304ECSSS	250-304ECSPS	3.125
2 1/2"	250-306ECSSS	250-306ECSPS	3.188
2 1/2"	250-308ECSSS	250-308ECSPS	3.250
2 1/2"	250-310ECSSS	250-310ECSPS	3.313
2 1/2"	250-312ECSSS	250-312ECSPS	3.375
2 1/2"	250-314ECSSS	250-314ECSPS	3.438
2 1/2"	250-316ECSSS	250-316ECSPS	3.500
3"	300-312ECSSS	300-312ECSPS	3.375
3"	300-314ECSSS	300-314ECSPS	3.438
3"	300-316ECSSS	300-316ECSPS	3.500
3"	300-318ECSSS	300-318ECSPS	3.563
3"	300-320ECSSS	300-320ECSPS	3.625
3"	300-322ECSSS	300-322ECSPS	3.688
3"	300-324ECSSS	300-324ECSPS	3.750

INDUSTRIAL CRIMP

All items on this page are domestic, made in the U.S.A. LGV has capabilities of customizing product to the length required or thicker material. Part numbers ending with "H" are heavy wall sleeves. Please call for more questions.



External Crimp Sleeve



Size	304 Stainless	Plated Steel	ID Dimension
3"	300-326ECSSS	300-326ECSPS	3.813
3"	300-328ECSSS	300-328ECSPS	3.875
3"	300-330ECSSS	300-330ECSPS	3.938
3"	300-400ECSSS	300-400ECSPS	4.000
3"	300-402ECSSS	300-402ECSPS	4.063
3"	300-404ECSSS	300-404ECSPS	4.125
4"	400-412ECSSS	400-412ECSPS	4.375
4"	400-414ECSSS	400-414ECSPS	4.438
4"	400-416ECSSS	400-416ECSPS	4.500
4"	400-418ECSSS	400-418ECSPS	4.563
4"	400-420ECSSS	400-420ECSPS	4.625
4"	400-422ECSSS	400-422ECSPS	4.688
4"	400-424ECSSS	400-424ECSPS	4.750
4"	400-426ECSSS	400-426ECSPS	4.813
4"	400-428ECSSS	400-428ECSPS	4.875
4"	400-430ECSSS	400-430ECSPS	4.938
4"	400-500ECSSS	400-500ECSPS	5.000
4"	400-502ECSSS	400-502ECSPS	5.063
4"	400-504ECSSS	400-504ECSPS	5.125
4"	N/A	400-416ECSPSH	4.500
4"	N/A	400-418ECSPSH	4.563
4"	N/A	400-420ECSPSH	4.625
4"	N/A	400-422ECSPSH	4.688
4"	N/A	400-424ECSPSH	4.750
4"	N/A	400-426ECSPSH	4.813
4"	N/A	400-428ECSPSH	4.875
4"	N/A	400-430ECSPSH	4.938
4"	N/A	400-500ECSPSH	5.000

INDUSTRIAL CRIMP

All items on this page are domestic, made in the U.S.A.. LGV has capabilities of customizing product to the length required or thicker material. Please call for more questions.



Aluminum External Crimp Sleeve



Size	6061-T6 Aluminum	ID Dimension
3"	300-322ECSA	3.688
3"	300-324ECSA	3.750
3"	300-326ECSA	3.813
3"	300-328ECSA	3.875
3"	300-330ECSA	3.938
3"	300-400ECSA	4.000
4"	400-422ECSA	4.688
4"	400-424ECSA	4.750
4"	400-426ECSA	4.813
4"	400-428ECSA	4.875
4"	400-430ECSA	4.938
4"	400-500ECSA	4.500

DIDN'T SEE THE FERRULE/SLEEVE NEEDED?

Give us a call at (310) 516-1534, let us know what inner diameter or length needed!

INDUSTRIAL MANDREL EXPANSION

All items on this page are domestic, made in the U.S.A. These items are pull-through mandrel internal expansion. Standard material is 304 stainless steel. 316 stainless steel is available upon request. LGV has capabilities of customizing product to thicker material or making fitting a jump-size. Please call for more questions.



Butt-Weld Pipe (SCH 40 Weld-On)

Size	304 Stainless	Plated Steel
1 1/2"	150BWMESS	150BWMECS
2"	200BWMESS	200BWMECS
2 1/2"	250BWMESS	250BWMECS
3"	300BWMESS	300BWMECS
4"	400BWMESS	400BWMECS



Male Thread (NPT Pipe Thread) 250 PSI

Size	304 Stainless	Plated Steel
1"	100MTMESS	100MTMEPS
1 1/4"	125MTMESS	125MTMEPS
1 1/2"	150MTMESS	150MTMEPS
2"	200MTMESS	200MTMEPS
2 1/2"	250MTMESS	250MTMEPS
3"	300MTMESS	300MTMEPS
4"	400MTMESS	400MTMEPS



Permtach Male Thread (NPT Pipe Thread) Low-Pressure 150 PSI

Size	304 Stainless
1"	100PMTMESS
1 1/4"	125PMTMESS
1 1/2"	150PMTMESS
2"	200PMTMESS
2 1/2"	250PMTMESS
3"	300PMTMESS
4"	400PMTMESS

INDUSTRIAL MANDREL EXPANSION

All items on this page are domestic, made in the U.S.A. Standard material is 304 stainless steel. 316 stainless steel is available upon request. LGV has capabilities of customizing product to thicker material or making fitting a jump-size. Please call for more questions

Victaulic (Groove End) 250 PSI



Size	304 Stainless	Plated Steel
1"	100VMESS	100VMEPS
1 1/2"	150VMESS	150VMEPS
2"	200VMESS	200VMEPS
2 1/2"	250VMESS	250VMEPS
3"	300VMESS	300VMEPS
4"	400VMESS	400VMEPS

Permtach Victaulic (Groove End) Low-Pressure 150 PSI



Size	304 Stainless
1"	100PVMESS
1 1/2"	150PVMESS
2"	200PVMESS
2 1/2"	250PVMESS
3"	300PVMESS
4"	400PVMESS

California End Mandrel Expansion



Size	Plated Steel
2"	200CEMEPS
2 1/2"	250CEMEPS

INDUSTRIAL MANDREL EXPANSION

All items on this page are domestic, made in the U.S.A. LGV has capabilities of customizing product to the length required or thicker material. The fourth column is to be used with low pressure "Permtach" fittings. Please call for more questions.



Picture shown above is a MEFSS/MEFPS Ferrule



Mandrel Expansion Ferrule



Picture shown above is a MEFPS Ferrule
Permtach Low Pressure

Size	304 Stainless	Plated Steel	Permtach 304SS	ID Dimension
1"	100-115MEFSS	100-115MEFPS	100-115MEPF	1.469
1"	100-116MEFSS	100-116MEFPS	100-116MEPF	1.500
1"	100-117MEFSS	100-117MEFPS	100-117MEPF	1.531
1"	100-118MEFSS	100-118MEFPS	100-118MEPF	1.563
1"	100-120MEFSS	100-120MEFPS	100-120MEPF	1.625
1"	100-122MEFSS	100-122MEFPS	100-122MEPF	1.688
1"	100-124MEFSS	100-124MEFPS	100-124MEPF	1.750
1 1/4"	125-124MEFSS	125-124MEFPS	125-124MEPF	1.750
1 1/4"	125-126MEFSS	125-126MEFPS	125-126MEPF	1.813
1 1/4"	125-127MEFSS	125-127MEFPS	125-127MEPF	1.844
1 1/4"	125-128MEFSS	125-128MEFPS	125-128MEPF	1.875
1 1/4"	125-129MEFSS	125-129MEFPS	125-129MEPF	1.906
1 1/4"	125-130MEFSS	125-130MEFPS	125-130MEPF	1.938
1 1/4"	125-200MEFSS	125-200MEFPS	125-200MEPF	2.000
1 1/2"	150-200MEFSS	150-200MEFPS	150-200MEPF	2.000
1 1/2"	150-201MEFSS	150-201MEFPS	150-201MEPF	2.031
1 1/2"	150-202MEFSS	150-202MEFPS	150-202MEPF	2.063
1 1/2"	150-203MEFSS	150-203MEFPS	150-203MEPF	2.093
1 1/2"	150-204MEFSS	150-204MEFPS	150-204MEPF	2.125
1 1/2"	150-205MEFSS	150-205MEFPS	150-205MEPF	2.156
1 1/2"	150-206MEFSS	150-206MEFPS	150-206MEPF	2.188
1 1/2"	150-207MEFSS	150-207MEFPS	150-207MEPF	2.218
1 1/2"	150-208MEFSS	150-208MEFPS	150-208MEPF	2.250
1 1/2"	150-210MEFSS	150-210MEFPS	150-210MEPF	2.313
1 1/2"	150-212MEFSS	150-212MEFPS	150-212MEPF	2.375
2"	200-214MEFSS	200-214MEFPS	200-214MEPF	2.438
2"	200-215MEFSS	200-215MEFPS	200-215MEPF	2.469
2"	200-216MEFSS	200-216MEFPS	200-216MEPF	2.500

INDUSTRIAL MANDREL EXPANSION

All items on this page are domestic, made in the U.S.A. LGV has capabilities of customizing product to the length required or thicker material. The fourth column is to be used with low pressure "Permtach" fittings. Please call for more questions.



Picture shown above is a MEFSS/MEFPS Ferrule



Mandrel Expansion Ferrule



Picture shown above is a MEPF Ferrule Permtach Low-Pressure

Size	304 Stainless	Plated Steel	Permtach 304SS	ID Dimension
2"	200-217MEFSS	200-217MEFPS	200-217MEPF	2.531
2"	200-218MEFSS	200-218MEFPS	200-218MEPF	2.563
2"	200-219MEFSS	200-219MEFPS	200-219MEPF	2.593
2"	200-220MEFSS	200-220MEFPS	200-220MEPF	2.625
2"	200-221MEFSS	200-221MEFPS	200-221MEPF	2.656
2"	200-222MEFSS	200-222MEFPS	200-222MEPF	2.688
2"	200-223MEFSS	200-223MEFPS	200-223MEPF	2.718
2"	200-224MEFSS	200-224MEFPS	200-224MEPF	2.750
2"	200-225MEFSS	200-225MEFPS	200-225MEPF	2.781
2"	200-226MEFSS	200-226MEFPS	200-226MEPF	2.813
2"	200-227MEFSS	200-227MEFPS	200-227MEPF	2.844
2"	200-228MEFSS	200-228MEFPS	200-228MEPF	2.875
2"	200-229MEFSS	200-229MEFPS	200-229MEPF	2.906
2"	200-230MEFSS	200-230MEFPS	200-230MEPF	2.938
2"	200-300MEFSS	200-300MEFPS	200-300MEPF	3.000
2"	200-301MEFSS	200-301MEFPS	200-301MEPF	3.031
2 1/2"	250-302MEFSS	250-302MEFPS	250-302MEPF	3.063
2 1/2"	250-304MEFSS	250-304MEFPS	250-304MEPF	3.125
2 1/2"	250-305MEFSS	250-305MEFPS	250-305MEPF	3.156
2 1/2"	250-306MEFSS	250-306MEFPS	250-306MEPF	3.188
2 1/2"	250-307MEFSS	250-307MEFPS	250-307MEPF	3.218
2 1/2"	250-308MEFSS	250-308MEFPS	250-308MEPF	3.250
2 1/2"	250-310MEFSS	250-310MEFPS	250-310MEPF	3.313
2 1/2"	250-312MEFSS	250-312MEFPS	250-312MEPF	3.375
2 1/2"	250-314MEFSS	250-314MEFPS	250-314MEPF	3.438
2 1/2"	250-316MEFSS	250-316MEFPS	250-316MEPF	3.500
3"	300-318MEFSS	300-318MEFPS	300-318MEPF	3.563
3"	300-320MEFSS	300-320MEFPS	300-320MEPF	3.625

INDUSTRIAL MANDREL EXPANSION

All items on this page are domestic, made in the U.S.A. LGV has capabilities of customizing product to the length required or thicker material. The fourth column is to be used with low pressure "Permtach" fittings. Please call for more questions.



Picture shown above is a MEFSS/MEFPS Ferrule



Mandrel Expansion Ferrule



Picture shown above is a MEFPF Ferrule
Permtach Low Pressure

Size	304 Stainless	Plated Steel	Permtach 304SS	ID Dimension
3"	300-321MEFSS	300-321MEFPS	300-321MEPF	3.656
3"	300-322MEFSS	300-322MEFPS	300-322MEPF	3.688
3"	300-323MEFSS	300-323MEFPS	300-323MEPF	3.719
3"	300-324MEFSS	300-324MEFPS	300-324MEPF	3.750
3"	300-325MEFSS	300-325MEFPS	300-325MEPF	3.781
3"	300-326MEFSS	300-326MEFPS	300-326MEPF	3.813
3"	300-327MEFSS	300-327MEFPS	300-327MEPF	3.844
3"	300-328MEFSS	300-328MEFPS	300-328MEPF	3.875
3"	300-329MEFSS	300-329MEFPS	300-329MEPF	3.906
3"	300-330MEFSS	300-330MEFPS	300-330MEPF	3.938
3"	300-331MEFSS	300-331MEFPS	300-331MEPF	3.969
3"	300-400MEFSS	300-400MEFPS	300-400MEPF	4.000
3"	300-402MEFSS	300-402MEFPS	300-402MEPF	4.063
3"	300-404MEFSS	300-404MEFPS	300-404MEPF	4.125
4"	400-418MEFSS	400-418MEFPS	400-418MEPF	4.563
4"	400-420MEFSS	400-420MEFPS	400-420MEPF	4.625
4"	400-422MEFSS	400-422MEFPS	400-422MEPF	4.688
4"	400-423MEFSS	400-423MEFPS	400-423MEPF	4.719
4"	400-424MEFSS	400-424MEFPS	400-424MEPF	4.750
4"	400-425MEFSS	400-425MEFPS	400-425MEPF	4.781
4"	400-426MEFSS	400-426MEFPS	400-426MEPF	4.813
4"	400-427MEFSS	400-427MEFPS	400-427MEPF	4.844
4"	400-428MEFSS	400-428MEFPS	400-428MEPF	4.875
4"	400-429MEFSS	400-429MEFPS	400-429MEPF	4.906
4"	400-430MEFSS	400-430MEFPS	400-430MEPF	4.938
4"	400-431MEFSS	400-431MEFPS	400-431MEPF	4.969
4"	400-500MEFSS	400-500MEFPS	400-500MEPF	5.000
4"	400-502MEFSS	400-502MEFPS	400-502MEPF	5.063

INDUSTRIAL WELD-ONS

All items on this page are domestic, made in the U.S.A. LGV has the advantage of customizing products for the customer's needs.

Please call for custom work.

Weld Groove-End



Size	304 Stainless	Carbon Steel
3/4"	075WGESS	075WGECS
1"	100WGESS	100WGECS
1 1/2"	150WGESS	150WGECS
2"	200WGESS	200WGECS
2 1/2"	250WGESS	250WGECS
3"	300WGESS	300WGECS
4"	400WGECS	400WGECS

Weld Male NPT



Size	304 Stainless	Plated Steel
3/4"	075WNPTSS	075WNPTCS
1"	100WNPTSS	100WNPTCS
1 1/2"	150WNPTSS	150WNPTCS
2"	200WNPTSS	200WNPTCS
2 1/2"	250WNPTSS	250WNPTCS
3"	300WNPTSS	300WNPTCS
4"	400WNPTSS	400WNPTCS

GOT A SPECIAL DESIGN?

Let us bring your design to life with our custom capabilities!



 Groove-End 90 Elbow



 Male NPT by Groove-End

SANITARY CRIMP FITTINGS

All items on this page are domestic, made in the U.S.A. Standard material is 304 stainless steel. 316 stainless steel is available upon request. LGV has capabilities of customizing product to thicker material or making fitting a jump-size. Please call for more questions

Sanitary Bevel Seat Female Crimp



Size	304 Stainless
1 1/2"	150SBVSFC
2"	200SBVSFC
2 1/2"	250SBVSFC
3"	300SBVSFC
4"	400SBVSFC

Sanitary Bevel Seat Female w/ Bumper Crimp



Size	304 Stainless
1 1/2"	150SBVSFCB
2"	200SBVSFCB
3"	300SBVSFCB

- When ordered, these sizes are included with bumper and acme nut
- All components are shipped assembled

Sanitary Bevel Seat Female w/ Bumper Space Crimp



Size	304 Stainless
2 1/2"	250SBVSFCB
4"	400SBVSFCB

- When ordered, these sizes do not include bumper and acme nut

Sanitary Bevel Seat Male Crimp



Size	304 Stainless
1 1/2"	150SBVSMC
2"	200SBVSMC
2 1/2"	250SBVSMC
3"	300SBVSMC
4"	400SBVSMC

SANITARY CRIMP FITTINGS

All items on this page are domestic, made in the U.S.A. Standard material is 304 stainless steel. 316 stainless steel is available upon request. LGV has capabilities of customizing product to thicker material or making fitting a jump-size. Please call for more questions

Sanitary Tri-Clamp Crimp



Size	304 Stainless
3/4"	075STCC (w/ 1 1/2" TC End)
1"	100STCC (w/ 1 1/2" TC End)
1 1/2"	150STCC
2"	200STCC
2 1/2"	250STCC
3"	300STCC
4"	400STCC
6"	600STCC

Sanitary Tri-Clamp w/ Bumper Crimp



Size	304 Stainless
3/4"	075STCCB (w/ 1 1/2" TC End)
1"	100STCCB (w/ 1 1/2" TC End)
1 1/2"	150STCCB
2"	200STCCB
3"	300STCCB

- When ordered, these sizes are included with bumper
- All components are shipped assembled

Sanitary Tri-Clamp w/ Bumper Space Crimp



Size	304 Stainless
2 1/2"	250STCCB
4"	400STCCB

- When ordered, these sizes do not include bumper

Jump Size Sanitary Tri-Clamp Crimp



Part Number	Description
100CSX200TC	1" Crimp Shank by 2" Tri-Clamp
150CSX200TC	1 1/2" Crimp Shank by 2" Tri-Clamp
150CSX250TC	1 1/2" Crimp Shank by 2 1/2" Tri-Clamp
200CSX250TC	2" Crimp Shank by 2 1/2" Tri-Clamp
200CSX300TC	2" Crimp Shank by 3" Tri-Clamp

SANITARY CRIMP FITTINGS

All items on this page are domestic, made in the U.S.A. Standard material is 304 stainless steel. 316 stainless steel is available upon request. LGV has capabilities of customizing product to thicker material or making fitting a jump-size. Please call for more questions

Sanitary Tube-End Crimp



Size	304 Stainless
1"	100STEC
1 1/2"	150STEC
2"	200STEC
2 1/2"	250STEC
3"	300STEC
4"	400STEC

Sanitary Tube-End w/ Bumper Crimp



Size	304 Stainless
1 1/2"	150STECB
2"	200STECB
3"	300STECB

- When ordered, these sizes are included with bumper
 - All components are shipped assembled

Sanitary Tube-End w/ Bumper Space Crimp



Size	304 Stainless
1"	100STECB
2 1/2"	250STECB
4"	400STECB

- When ordered, these sizes do not include bumper

CUSTOM SANITARY CRIMP



Female Bevel Seat 45 Elbow



Tri-Clamp 90 Elbow



Silicone Set



Reducers

SANITARY CRIMP FITTINGS

All items on this page are domestic, made in the U.S.A. Standard material is 304 stainless steel. 316 stainless steel is available upon request. LGV has capabilities of customizing product to thicker material or making fitting a jump-size. Please call for more questions

Sanitary Female I-Line Crimp



Size	304 Stainless
1 1/2"	150SFILC
2"	200SFILC
2 1/2"	250SFILC
3"	300SFILC
4"	400SFILC

Sanitary Male I-Line Crimp



Size	304 Stainless
1 1/2"	150SMILC
2"	200SMILC
2 1/2"	250SMILC
3"	300SMILC
4"	400SMILC

Sanitary John Perry Crimp



Size	304 Stainless
1 1/2"	150SJPC
2"	200SJPC
2 1/2"	250SJPC
3"	300SJPC
4"	400SJPC

Sanitary Female Din Crimp



Size	304 Stainless
1"	100SFDIN25C
1 1/2"	150SFDIN40C
2"	200SFDIN50C
2 1/2"	250SFDIN50C
3"	300SFDIN80C
4"	400SFDIN100C

SANITARY CRIMP FITTINGS

All items on this page are domestic, made in the U.S.A. Standard material is 304 stainless steel. 316 stainless steel is available upon request. LGV has capabilities of customizing product to thicker material or making fitting a jump-size. Please call for more questions

Sanitary Female Din w/ Bumper Crimp

NEW
ITEM!



Size	304 Stainless
1 1/2"	150SFDIN40CB
2"	200SFDIN50CB
3"	300SFDIN80CB

- When ordered, these sizes are included with bumper and din nut
- All components are shipped assembled

Sanitary Female Din w/ Bumper Space Crimp

NEW
ITEM!



Size	304 Stainless
1"	100SFDIN25CB
2 1/2"	250SFDIN65CB
4"	400SFDIN100CB

- When ordered, these sizes do not include bumper and din nuts

NEW
ITEM!



External Crimp Ferrule Stainless Steel Polished

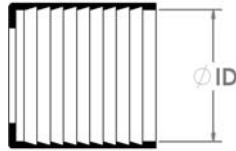
- This ferrule has surface finish of 32RA or better but is not listed in 3A Certificate.
- Don't see the ferrule ID size needed, give us a call.

Size	304 Stainless	ID Dimension
1 1/2"	150-202ECFSSP	2.063
1 1/2"	150-204ECFSSP	2.125
1 1/2"	150-206ECFSSP	2.188
1 1/2"	150-208ECFSSP	2.250
2"	200-218ECFSSP	2.563
2"	200-220ECFSSP	2.625
2"	200-222ECFSSP	2.688
2"	200-224ECFSSP	2.750
2"	200-226ECFSSP	2.813
2 1/2"	250-304ECFSSP	3.125

Size	304 Stainless	ID Dimension
2 1/2"	250-306ECFSSP	3.188
2 1/2"	250-308ECFSSP	3.250
3"	250-310ECFSSP	3.313
3"	300-320ECFSSP	3.625
3"	300-322ECFSSP	3.688
3"	300-324ECFSSP	3.750
3"	300-326ECFSSP	3.813
4"	400-420ECFSSP	4.625
4"	400-422ECFSSP	4.688
4"	400-424ECFSSP	4.750

SANITARY CRIMP FERRULE

All items on this page are domestic, made in the U.S.A. Standard material is 304 stainless steel. Please call for any questions. Ferrules have a 32RA or better surface finish.



Sanitary Crimp Ferrule



Size	304 Stainless	ID Dimension
3/4"	075-102SCF	1.063
3/4"	075-104SCF	1.125
3/4"	075-106SCF	1.188
3/4"	075-108SCF	1.250
3/4"	075-110SCF	1.313
1"	100-114SCF	1.438
1"	100-116SCF	1.500
1"	100-118SCF	1.563
1"	100-120SCF	1.625
1"	100-122SCF	1.688
1"	100-124SCF	1.750
1 1/2"	150-128SCF	1.875
1 1/2"	150-130SCF	1.938
1 1/2"	150-200SCF	2.000
1 1/2"	150-202SCF	2.063
1 1/2"	150-204SCF	2.125
1 1/2"	150-206SCF	2.188
1 1/2"	150-208SCF	2.250
1 1/2"	150-210SCF	2.313
1 1/2"	150-212SCF	2.375
2"	200-214SCF	2.438
2"	200-216SCF	2.500
2"	200-218SCF	2.563
2"	200-220SCF	2.625
2"	200-222SCF	2.688
2"	200-224SCF	2.750
2"	200-226SCF	2.813
2"	200-228SCF	2.875
2"	200-230SCF	2.938
2"	200-300SCF	3.000
2"	200-302SCF	3.063

Size	304 Stainless	ID Dimension
2"	200-304SCF	3.125
2 1/2"	250-300SCF	3.000
2 1/2"	250-302SCF	3.063
2 1/2"	250-304SCF	3.125
2 1/2"	250-306SCF	3.188
2 1/2"	250-308SCF	3.250
2 1/2"	250-310SCF	3.313
2 1/2"	250-312SCF	3.375
2 1/2"	250-314SCF	3.438
2 1/2"	250-316SCF	3.500
3"	300-318SCF	3.563
3"	300-320SCF	3.625
3"	300-322SCF	3.688
3"	300-324SCF	3.750
3"	300-326SCF	3.813
3"	300-328SCF	3.875
3"	300-330SCF	3.938
3"	300-400SCF	4.000
3"	300-402SCF	4.063
3"	300-404SCF	4.125
4"	400-418SCF	4.563
4"	400-420SCF	4.625
4"	400-422SCF	4.688
4"	400-424SCF	4.750
4"	400-426SCF	4.813
4"	400-428SCF	4.875
4"	400-430SCF	4.938
4"	400-500SCF	5.000
4"	400-502SCF	5.063
4"	400-504SCF	5.125

SANITARY CRIMP SLEEVE

All Items on this page are domestic, made in the U.S.A. Standard material is 304 stainless steel. Please call for any questions. Sleeves have a 32RA or better surface finish.



Sanitary Crimp Sleeve



Size	304 Stainless	ID Dimension
3/4"	075-102SCS	1.063
3/4"	075-104SCS	1.125
3/4"	075-106SCS	1.188
3/4"	075-108SCS	1.250
3/4"	075-110SCS	1.313
1"	100-114SCS	1.438
1"	100-116SCS	1.500
1"	100-118SCS	1.563
1"	100-120SCS	1.625
1"	100-122SCS	1.688
1"	100-124SCS	1.750
1 1/2"	150-128SCS	1.875
1 1/2"	150-130SCS	1.938
1 1/2"	150-200SCS	2.000
1 1/2"	150-202SCS	2.063
1 1/2"	150-204SCS	2.125
1 1/2"	150-206SCS	2.188
1 1/2"	150-208SCS	2.250
1 1/2"	150-210SCS	2.313
1 1/2"	150-212SCS	2.375
2"	200-214SCS	2.438
2"	200-216SCS	2.500
2"	200-218SCS	2.563
2"	200-220SCS	2.625
2"	200-222SCS	2.688
2"	200-224SCS	2.750
2"	200-226SCS	2.813
2"	200-228SCS	2.875
2"	200-230SCS	2.938
2"	200-300SCS	3.000

Size	304 Stainless	ID Dimension
2"	200-302SCS	3.063
2"	200-304SCS	3.125
2 1/2"	250-300SCS	3.000
2 1/2"	250-302SCS	3.063
2 1/2"	250-304SCS	3.125
2 1/2"	250-306SCS	3.188
2 1/2"	250-308SCS	3.250
2 1/2"	250-310SCS	3.313
2 1/2"	250-312SCS	3.375
2 1/2"	250-314SCS	3.438
2 1/2"	250-316SCS	3.500
3"	300-318SCS	3.563
3"	300-320SCS	3.625
3"	300-322SCS	3.688
3"	300-324SCS	3.750
3"	300-326SCS	3.813
3"	300-328SCS	3.875
3"	300-330SCS	3.938
3"	300-400SCS	4.000
3"	300-402SCS	4.063
3"	300-404SCS	4.125
4"	400-418SCS	4.563
4"	400-420SCS	4.625
4"	400-422SCS	4.688
4"	400-424SCS	4.750
4"	400-426SCS	4.813
4"	400-428SCS	4.875
4"	400-430SCS	4.938
4"	400-500SCS	5.000
4"	400-502SCS	5.063
4"	400-504SCS	5.125

SANITARY MANDREL EXPANSION

All items on this page are domestic, made in the U.S.A. Standard material is 304 stainless steel. 316 stainless steel is available upon request. Mandrel Expansion is also known as Pull-Through style. LGV has capabilities of customizing product to thicker material or making fitting a jump-size. Please call for more questions

Sanitary Bevel Seat Female Mandrel Expansion



Size	304 Stainless
1 1/2"	150SBVSFME
2"	200SBVSFME
2 1/2"	250SBVSFME
3"	300SBVSFME
4"	400SBVSFME

Sanitary Bevel Seat Female w/ Bumper Mandrel Expansion



Size	304 Stainless
1 1/2"	150SBVSFMEB
2"	200SBVSFMEB
3"	300SBVSFMEB

- When ordered, these sizes are included with bumper and acme nut
 - All components are shipped assembled

Sanitary Bevel Seat Female w/ Bumper Space Mandrel Expansion



Size	304 Stainless
2 1/2"	250SBVSFMEB
4"	400SBVSFMEB

- When ordered, these sizes do not include bumper and acme nut

Sanitary Bevel Seat Male Mandrel Expansion



Size	304 Stainless
1 1/2"	150SBVSMME
2"	200SBVSMME
2 1/2"	250SBVSMME
3"	300SBVSMME
4"	400SBVSMME

SANITARY MANDREL EXPANSION

All items on this page are domestic, made in the U.S.A. Standard material is 304 stainless steel. 316 stainless steel is available upon request. LGV has capabilities of customizing product to thicker material or making fitting a jump-size. Please call for more questions

Sanitary Tri-Clamp Mandrel Expansion



Size	304 Stainless
1"	100STCME (w/ 1 1/2" TC End)
1 1/2"	150STCME
2"	200STCME
2 1/2"	250STCME
3"	300STCME
4"	400STCME

Sanitary Tri-Clamp w/ Bumper Mandrel Expansion



Size	304 Stainless
1"	100STCMEB (w/ 1 1/2" TC End)
1 1/2"	150STCMEB
2"	200STCMEB
3"	300STCMEB



- When ordered, these sizes are included with bumper
- All components are shipped assembled

Sanitary Tri-Clamp w/ Bumper Space Mandrel Expansion



Size	304 Stainless
2 1/2"	250STCMEB
4"	400STCMEB



- When ordered, these sizes do not include bumper

Sanitary Female I-line Mandrel Expansion



Size	304 Stainless
1 1/2"	150SFILME
2"	200SFILME
2 1/2"	250SFILME
3"	300SFILME
4"	400SFILME

SANITARY MANDREL EXPANSION

All items on this page are domestic, made in the U.S.A. Standard material is 304 stainless steel. 316 stainless steel is available upon request. LGV has capabilities of customizing product to thicker material or making fitting a jump-size. Please call for more questions

Sanitary Male I-line Mandrel Expansion



Size	304 Stainless
1 1/2"	150SMILME
2"	200SMILME
2 1/2"	250SMILME
3"	300SMILME
4"	400SMILME

Sanitary Female DIN Mandrel Expansion



Size	304 Stainless
1 1/2"	150SFDIN40ME
2"	200SFDIN50ME
2 1/2"	250SFDIN65ME
3"	300SFDIN80ME
4"	400SFDIN100ME

- Available with bumper space

DID YOU KNOW?

LGV's bumpers are design to protect the fitting end. The bumper is even design to protect and acme nut as well for bevel seat assemblies.



SANITARY FINGER EXPANSION

All items on this page are domestic, made in the U.S.A. Standard material is 304 stainless steel. 316 stainless steel is available upon request. LGV has capabilities of customizing product to thicker material or making fitting a jump-size. Please call for more questions

Sanitary Bevel Seat Female Finger Expansion



Size	304 Stainless
1 1/2"	150SBVSFFE
2"	200SBVSFFE
2 1/2"	250SBVSFFE
3"	300SBVSFFE
4"	400SBVSFFE

Sanitary Bevel Seat Male Finger Expansion



Size	304 Stainless
1 1/2"	150SBVSMFE
2"	200SBVSMFE
2 1/2"	250SBVSMFE
3"	300SBVSMFE
4"	400SBVSMFE

Sanitary Tri-Clamp Finger Expansion



Size	304 Stainless
1 1/2"	150STCFE
2"	200STCFE
2 1/2"	250STCFE
3"	300STCFE
4"	400STCFE

Sanitary Tube-End Finger Expansion



Size	304 Stainless
1 1/2"	150STEFE
2"	200STEFE
2 1/2"	250STEFE
3"	300STEFE
4"	400STEFE

SANITARY FINGER EXPANSION

All items on this page are domestic, made in the U.S.A. Standard material is 304 stainless steel. 316 stainless steel is available upon request. LGV has capabilities of customizing product to thicker material or making fitting a jump-size. Please call for more questions

Sanitary Female I-Line Finger Expansion



Size	304 Stainless
1 1/2"	150SFILFE
2"	200SFILFE
2 1/2"	250SFILFE
3"	300SFILFE
4"	400SFILFE

Sanitary Male I-Line Finger Expansion



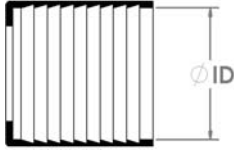
Size	304 Stainless
1 1/2"	150SMILFE
2"	200SMILFE
2 1/2"	250SMILFE
3"	300SMILFE
4"	400SMILFE

DID YOU KNOW?

**LGV's I-lines and DIN fittings are not welded!
Both product lines are made of one piece**

SANITARY INTERNAL EXPANSION

All Items on this page are domestic, made in the U.S.A. Standard material is 304 stainless steel. Please call for any questions. Ferrules have a 32RA or better surface finish.



Sanitary Internal Expansion Ferrule



Size	304 Stainless	ID Dimension
1"	100-115SFIE	1.469
1"	100-116SFIE	1.500
1"	100-117SFIE	1.531
1"	100-118SFIE	1.563
1"	100-120SFIE	1.625
1"	100-122SFIE	1.688
1"	100-124SFIE	1.750
1 1/2"	150-200SFIE	2.000
1 1/2"	150-201SFIE	2.031
1 1/2"	150-202SFIE	2.063
1 1/2"	150-203SFIE	2.093
1 1/2"	150-204SFIE	2.125
1 1/2"	150-205SFIE	2.156
1 1/2"	150-206SFIE	2.188
1 1/2"	150-207SFIE	2.219
1 1/2"	150-208SFIE	2.250
1 1/2"	150-210SFIE	2.313
1 1/2"	150-212SFIE	2.375
2"	200-214SFIE	2.438
2"	200-215SFIE	2.469
2"	200-216SFIE	2.500
2"	200-217SFIE	2.531
2"	200-218SFIE	2.563
2"	200-219SFIE	2.593
2"	200-220SFIE	2.625
2"	200-221SFIE	2.656
2"	200-222SFIE	2.688
2"	200-223SFIE	2.719
2"	200-224SFIE	2.750
2"	200-225SFIE	2.781

Size	304 Stainless	ID Dimension
2"	200-226SFIE	2.813
2"	200-227SFIE	2.844
2"	200-228SFIE	2.875
2"	200-229SFIE	2.906
2"	200-230SFIE	2.938
2"	200-300SFIE	3.000
2"	200-301SFIE	3.031
2 1/2"	250-302SFIE	3.063
2 1/2"	250-304SFIE	3.125
2 1/2"	250-305SFIE	3.156
2 1/2"	250-306SFIE	3.188
2 1/2"	250-307SFIE	3.219
2 1/2"	250-308SFIE	3.250
2 1/2"	250-310SFIE	3.313
2 1/2"	250-312SFIE	3.375
2 1/2"	250-314SFIE	3.438
2 1/2"	250-316SFIE	3.500
3"	300-318SFIE	3.563
3"	300-320SFIE	3.625
3"	300-321SFIE	3.656
3"	300-322SFIE	3.688
3"	300-323SFIE	3.719
3"	300-324SFIE	3.750
3"	300-325SFIE	3.781
3"	300-326SFIE	3.813
3"	300-327SFIE	3.844
3"	300-328SFIE	3.875
3"	300-330SFIE	3.938
3"	300-331SFIE	3.969
3"	300-400SFIE	4.000
3"	300-402SFIE	4.063

SANITARY INTERNAL EXPANSION

All Items on this page are domestic, made in the U.S.A. Standard material is 304 stainless steel. Please call for any questions. Ferrules have a 32RA or better surface finish.



Sanitary Internal Expansion Ferrule



Size	304 Stainless	ID Dimension
3"	300-402SFIE	4.063
3"	300-404SFIE	4.125
4"	400-418SFIE	4.563
4"	400-420SFIE	4.625
4"	400-421SFIE	4.656
4"	400-422SFIE	4.688
4"	400-423SFIE	4.719
4"	400-424SFIE	4.750

Size	304 Stainless	ID Dimension
4"	400-425SFIE	4.781
4"	400-426SFIE	4.813
4"	400-427SFIE	4.844
4"	400-428SFIE	4.875
4"	400-429SFIE	4.906
4"	400-430SFIE	4.938
4"	400-431SFIE	4.969
4"	400-500SFIE	5.000
4"	400-502SFIE	5.063

DIDN'T SEE THE FERRULE NEEDED?

Give us a call at (310) 516-1534, let us know what inner diameter or length needed!

WINE & BREWERY

All Items on this page are domestic, made in the U.S.A. Standard material is 304 stainless steel. 316 stainless steel is available upon request. LGV has capabilities of customizing product to thicker material or making fitting a jump-size. All items on this page are great for Crimping or Banding. Please call for more questions

Sanitary Tri-Clamp Wine Stainless Steel



Size	304 Stainless
1"	100STCWSS (w/ 1 1/2" TC End)
1 1/2"	150STCWSS
2"	200STCWSS
3"	300STCWSS

Sanitary Tri-Clamp Wine Stainless Steel w/ Bumper



Size	304 Stainless
1"	100STCWSSB (w/ 1 1/2" TC End)
1 1/2"	150STCWSSB
2"	200STCWSSB
3"	300STCWSSB

Sanitary Tube-End Wine Stainless Steel



Size	304 Stainless
1"	100STEWSS
1 1/2"	150STEWSS
2"	200STEWSS
3"	300STEWSS

Sanitary Female Bevel Seat Wine Stainless Steel



Size	304 Stainless
1 1/2"	150SBVSFWSS
2"	200SBVSFWSS
3"	300SBVSFWSS

WINE & BREWERY

All Items on this page are domestic, made in the U.S.A. Standard material is 304 stainless steel. 316 stainless steel is available upon request. LGV has capabilities of customizing product to thicker material or making fitting a jump-size. Please call for more questions

Female Pacific Coast Thread Wine Stainless Steel



Size	304 Stainless
1 1/2"	150FPCTWSS
2"	200FPCTWSS
3"	300FPCTWSS

Male Pacific Coast Thread Wine Stainless Steel



Size	304 Stainless
1 1/2"	150MPCTWSS
2"	200MPCTWSS
3"	300MPCTWSS



Wine Crimp Ferrule

- These ferrules are used with all fittings on pages 33-34 for crimping assemblies.

- Don't see the ferrule ID size needed, give us a call.

Size	304 Stainless	ID Dimension
1"	100-116WCFSS	1.500
1"	100-118WCFSS	1.563
1"	100-120WCFSS	1.625
1"	100-122WCFSS	1.688
1 1/2"	150-204WCFSS	2.125
1 1/2"	150-206WCFSS	2.188
1 1/2"	150-208WCFSS	2.250
1 1/2"	150-210WCFSS	2.313
2"	200-222WCFSS	2.688
2"	200-224WCFSS	2.750

Size	304 Stainless	ID Dimension
2"	200-226WCFSS	2.813
2"	200-228WCFSS	2.875
2"	200-230WCFSS	2.938
3"	300-324WCFSS	3.750
3"	300-326WCFSS	3.813
3"	300-328WCFSS	3.875
3"	300-330WCFSS	3.938
3"	300-400WCFSS	4.000
3"	300-402WCFSS	4.062
3"	300-404WCFSS	4.125

WINE & BREWERY

All Items on this page are domestic, made in the U.S.A. Standard material is 304 stainless steel. 316 stainless steel is available upon request. LGV has capabilities of customizing product to thicker material or making fitting a jump-size. Please call for more questions

Low Pressure Tri-Clamp Long



Size	304 Stainless
1"	100LPTCL (w/ 1 1/2" TC End)
1 1/2"	150LPTCL
2"	200LPTCL
3"	300LPTCL



External Crimp Sleeve Stainless Steel Long



- These sleeves are used with Low Pressure Fittings (LPTCL) for crimping assemblies.
- Don't see the sleeve ID size needed, give us a call.

Size	304 Stainless	ID Dimension
1"	100-116ECSSSL	1.500
1"	100-118ECSSSL	1.563
1"	100-120ECSSSL	1.625
1"	100-122ECSSSL	1.688
1 1/2"	150-204ECSSSL	2.125
1 1/2"	150-206ECSSSL	2.188
1 1/2"	150-208ECSSSL	2.250
1 1/2"	150-210ECSSSL	2.313
2"	200-222ECSSSL	2.688
2"	200-224ECSSSL	2.750

Size	304 Stainless	ID Dimension
2"	200-226ECSSSL	2.813
2"	200-228ECSSSL	2.875
2"	200-230ECSSSL	2.938
3"	300-324ECSSSL	3.750
3"	300-326ECSSSL	3.813
3"	300-328ECSSSL	3.875
3"	300-330ECSSSL	3.938
3"	300-400ECSSSL	4.000
3"	300-402ECSSSL	4.062
3"	300-404ECSSSL	4.125

SANITARY ACCESSORIES

Items with U.S.A. flag by name are domestic, made in the U.S.A. Standard material is 304 stainless steel. 316 stainless steel is available upon request. LGV has capabilities of customizing product to thicker material or making fitting a jump-size. Please call for more questions



Bevel Seat Nut

Size	Part Number
1 1/2"	150BSN
2"	200BSN
2 1/2"	250BSN
3"	300BSN
4"	400BSN



TC Clamp Heavy Single Pin

Size	Part Number
1 1/2"	150TCHSP
2"	200TCHSP
2 1/2"	250TCHSP
3"	300TCHSP
4"	400TCHSP
6"	600TCHSP



Solid TC End Cap

Size	Part Number
1 1/2"	LGV16AMP-15
2"	LGV16AMP-2
2 1/2"	LGV16AMP-25
3"	LGV16AMP-3
4"	LGV16AMP-4



DIN Nut

Size	Part Number
1"	DIN25N
1 1/2"	DIN40N
2"	DIN50N
2 1/2"	DIN65N
3"	DIN80N
4"	DIN100N

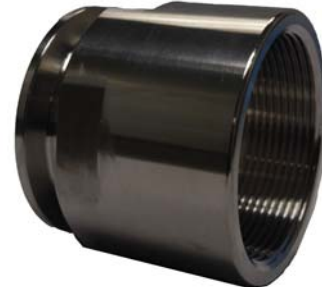
SANITARY ACCESSORIES

Items with U.S.A. flag by name are domestic, made in the U.S.A. Standard material is 304 stainless steel. 316 stainless steel is available upon request. LGV has capabilities of customizing product to thicker material or making fitting a jump-size. Please call for more questions



Tri-Clamp Short Weld Liners

Size	Part Number
1"	LGV14WMP-1
1 1/2"	LGV14WMP-15
2"	LGV14WMP-2
2 1/2"	LGV14WMP-25
3"	LGV14WMP-3
4"	LGV14WMP-4
6"	LGV14WMP-6



Tri-Clamp by Female NPT

Size	Part Number
1 1/2"	LGV22MP-1.5
2"	LGV22MP-2
2 1/2"	LGV22MP-2.5
3"	LGV22MP-3
4"	LGV22MP-4



90 Clamp Elbows

Size	Part Number
1"	LGV2CMP-1
1 1/2"	LGV2CMP-15
2"	LGV2CMP-2
2 1/2"	LGV2CMP-25
3"	LGV2CMP-3
4"	LGV2CMP-4



Tri-Clamp by Male NPT

Size	Part Number
1 1/2"	LGV21MP-1.5
2"	LGV21MP-2
2 1/2"	LGV21MP-2.5
3"	LGV21MP-3
4"	LGV21MP-4

SANITARY ACCESSORIES

Items with U.S.A. flag by name are domestic, made in the U.S.A. Standard material is 304 stainless steel. 316 stainless steel is available upon request. LGV has capabilities of customizing product to thicker material or making fitting a jump-size. Please call for more questions



Female I-Line Short Weld Liners

Size	Part Number
1"	LGV15WI-1
1 1/2"	LGV15WI-15
2"	LGV15WI-2
2 1/2"	LGV15WI-25
3"	LGV15WI-3
4"	LGV15WI-4



Male I-Line Short Weld Liners

Size	Part Number
1"	LGV14WI-1
1 1/2"	LGV14WI-15
2"	LGV14WI-2
2 1/2"	LGV14WI-25
3"	LGV14WI-3
4"	LGV14WI-4



Female Din Weld Liners (316 Stainless Steel)

Size	Part Number
1"	LGV14WI-1
1 1/2"	LGV14WI-15
2"	LGV14WI-2
2 1/2"	LGV14WI-25
3"	LGV14WI-3
4"	LGV14WI-4



Male PCT by Tube End

Part Number	Description
200MPCTTE	2" Male PCT by Tube End
300MPCTTE	3" Male PCT by Tube End
300MPCT400TE	3" Male PCT by 4" Tube End

ACCESSORIES

Items with U.S.A. flag by name are domestic, made in the U.S.A. Standard material is 304 stainless steel. 316 stainless steel is available upon request. LGV has capabilities of customizing product to thicker material or making fitting a jump-size. Please call for more questions



Female PCT by Tube End 

Part Number	Description
200FPCTTE	2" Female PCT by Tube End
300FPCTTE	3" Female PCT by Tube End



Male PCT by Male PCT 



Sanitary Crimp Shank by 90 Elbow Long Tube End
(Choose the end required)



Female DIN by Tri-Clamp 



Female Acme by Male NPT



Tube End by Tube End Elbow

INDEX OF PARTS

FITTINGS

Butt - Weld, Pipe Crimp Carbon Steel (BWPCCS)	8
Butt - Weld, Pipe Crimp Stainless Steel (BWPCSS)	8
Butt - Weld, Mandrel Expansion Carbon Steel (BWMECS)	18
Butt - Weld, Mandrel Expansion Stainless Steel (BWMESS)	18
California End Mandrel Expansion Plated Steel (CEMEPS)	19
Crimp Male Thread Plated Steel (CMTPS)	8
Crimp Male Thread Stainless Steel (CMTSS)	8
Female Pacific Coast Thread Wine Stainless Steel (FPCTWSS)	39
Heavy End Heat Treated Concrete (HEHTCS)	9
Jump Size Sanitary Tri-Clamp Crimp (XXXCSXXXTC)	25
King Combination Nipple Plated Steel (KCNPS)	9
King Combination Nipple Stainless Steel (KCNSS)	9
Low Pressure Tri-Clamp Long (LPTCL)	40
Male Pacific Coast Thread Wine Stainless Steel (MPCTWSS)	39
Male Thread Mandrel Expansion Plated Steel (MTMEPS)	18
Male Thread Mandrel Expansion Stainless Steel (MTMESS)	18
Permtach Male Thread Mandrel Expansion Stainless Steel (PMTMESS)	18
Permtach Victaulic Mandrel Expansion Stainless Steel (PVMESS)	19
Sanitary Bevel Seat Female Crimp (SBVSFC)	24
Sanitary Bevel Seat Female Crimp w/ Bumper Space (SBVSFCB)	24
Sanitary Bevel Seat Female Finger Expansion (SBVSFFE)	34
Sanitary Bevel Seat Female Mandrel Expansion (SBVSFME)	31
Sanitary Bevel Seat Female Mandrel Expansion w/ Bumper Space (SBVSFMEB)	31
Sanitary Bevel Seat Female Wine Stainless Steel (SBVSFWSS)	38
Sanitary Bevel Seat Male Crimp (SBVSMC)	24
Sanitary Bevel Seat Male Finger Expansion (SBVSMFE)	34
Sanitary Bevel Seat Male Mandrel Expansion (SBVSMME)	31
Sanitary Female Din Fitting Crimp (SFDINXXC)	27
Sanitary Female Din Fitting Crimp w/ Bumper Space (SFDINXXCB)	28
Sanitary Female Din Fitting Mandrel Expansion (SFDINXXME)	33
Sanitary Female I-Line Crimp (SFILC)	27
Sanitary Female I-Line Finger Expansion (SFILFE)	35
Sanitary Female I-Line Mandrel Expansion (SFILME)	32
Sanitary John Perry Crimp (SJPC)	27
Sanitary Male I-Line Crimp (SMILC)	27
Sanitary Male I-Line Finger Expansion (SMILFE)	35
Sanitary Male I-Line Mandrel Expansion (SMILME)	33

INDEX OF PARTS

FITTINGS

Sanitary Tri-Clamp Crimp (STCC)	25
Sanitary Tri-Clamp Crimp w/ Bumper Space (STCCB)	25
Sanitary Tri-Clamp Finger Expansion (STCFE)	34
Sanitary Tri-Clamp Mandrel Expansion (STCME)	32
Sanitary Tri-Clamp Mandrel Expansion w/ Bumper Space (STCMEB)	32
Sanitary Tri-Clamp Wine Stainless Steel (STCWSS)	38
Sanitary Tri-Clamp Wine Stainless Steel w/ Bumper Space (STCWSSB)	38
Sanitary Tube-End Crimp (STEC)	26
Sanitary Tube-End Crimp w/ Bumper Space (STECB)	26
Sanitary Tube-End Finger Expansion (STEFE)	34
Sanitary Tube-End Wine Stainless Steel (STEWSS)	38
Type A - Aluminum Camlock Coupling (LGVXXXA-AL)	6
Type B - Aluminum Camlock Coupling (LGVXXXB-AL)	6
Type C - Aluminum Camlock Coupling (LGVXXXC-AL)	6
Type D - Aluminum Camlock Coupling (LGVXXXD-AL)	6
Type E - Aluminum Camlock Coupling (LGVXXXE-AL)	7
Type F - Aluminum Camlock Coupling (LGVXXXF-AL)	7
Type DC - Aluminum Camlock Coupling (LGVXXXDC-AL)	7
Type DP - Aluminum Camlock Coupling (LGVXXXDP-AL)	7
Victaulic Crimp Plated Steel (VCPS)	8
Victaulic Crimp Stainless Steel (VCSS)	8
Victaulic Mandrel Expansion Plated Steel (VMEPS)	19
Victaulic Mandrel Expansion Stainless Steel (VMESS)	19

FERRULES

External Crimp Ferrule Plated Steel (ECFPS)	10
External Crimp Ferrule Plated Steel Heavy Wall (ECFPSH)	12
External Crimp Ferrule Stainless Steel (ECFSS)	10
External Crimp Ferrule Stainless Steel Polished (ECFSSP)	28
External Heavy Duty Crimp Ferrule Plated Steel (ECFHDPS)	13
External Heavy Duty Crimp Ferrule Stainless Steel (ECFHDSS)	13
Mandrel Expansion Ferrule Plated Steel (MEFPS)	20
Mandrel Expansion Ferrule Stainless Steel (MEFSS)	20
Mandrel Expansion Permtach Ferrule (MEPF)	20
Sanitary Crimp Ferrule (SCF)	29
Sanitary Ferrule Internal Expansion (SFIE)	36
Wine Crimp Ferrule Stainless Steel (WCFSS)	39

INDEX OF PARTS

SLEEVES

External Crimp Sleeve Aluminum (ECSA)	17
External Crimp Sleeve Plated Steel (ECSPS)	14
External Crimp Sleeve Plated Steel Heavy Wall (ECSPSH)	16
External Crimp Sleeve Stainless Steel (ECSSS)	14
External Crimp Sleeve Stainless Steel Long (ECSSSL)	40
Sanitary Crimp Sleeve (SCS)	30

ACCESSORIES

Bevel Seat Nut (Acme Nut)	41
DIN Nut	41
Female Acme Thread by Male NPT	44
Female Din by Tri-Clamp	44
Female Din Weld Liners	43
Female I-Line Short Weld Liners	43
Female Pacific Coast Thread by Tube-End	44
Male I-Line Short Weld Liners	43
Male Pacific Coast Thread by Male Pacific Coast Thread	44
Male Pacific Coast Thread by Tube-End	43
Sanitary Crimp Shank by 90 Elbow Long Tube End	44
Solid Tri-Clamp End Cap	44
Tri-Clamp Clamp Heavy Single Pin	41
Tri-Clamp by Female NPT	42
Tri-Clamp by Male NPT	42
Tube-End by Tube-End	44
90 Clamp Elbows	42

WELD-ONS

Weld Groove End Carbon Steel (WGECS)	23
Weld Groove End Stainless Steel (WGECS)	23
Weld NPT Carbon Steel (WNPTCS)	23
Weld NPT Stainless Steel (WNPTSS)	23

WARRANTY

LGV warrants the product sold only if the product is used under the correct specifications and intended use. The product can be replaced or reworked by LGV if it is determined that the product did not perform as expected and LGV is notified of the defective product within 30 days of receipt.

Custom ordered products are not eligible for the warranty. Often times parts are made to order and as such, in the case that a customer incorrectly specifies a part, this warranty is void. LGV will not accept the return of products in the event that the quantity ordered exceeds the quantity required by the customer. Once the manufacturing process has begun on an order, the order may not be cancelled or modified due to the customer's incorrect specification of the product.



Manufacturing Plant

1433 W. El Segundo Blvd.
Compton, CA 90222

Factory Warehouse

142 Scott Industrial Blvd.
Auburn, GA 30011

