

Aircraft Fueling



Air & Multipurpose

- General Purpose
- Heavy Duty
- Push-on

Chemical Transfer

Cleaning Equipment

Food

- Transfer
- Washdown

Marine

Material Handling

- Abrasives
- Bulk Transfer
- Cement & Concrete

Mining

Petroleum

- Aircraft Fueling
- Dispensing
- Dock
- Transfer

Spray

Steam

Vacuum

LPG Delivery

Water

- Discharge
- Suction & Discharge
- Washdown

Welding

Coupling Systems

Equipment

Appendix

	Page	API 1529	NFPA	EN 1361	Static Dissipating Cover
Advantage	161	Yes	Yes		Yes
Deadman Aircraft Refueling	162				
Jet Ranger	160	Yes	Yes	Yes	Yes
Platinum JAC Riser	158	Yes		Yes	Yes
Refueling Sensing	163				
Wingcraft	159	Yes	Yes		Yes

Platinum JAC Riser Hose



Designed for aircraft refuelers equipped with moveable service platforms to act as a flexible connections between the platform and the refueling truck.

» In a flex test of repetitive bend cycles, the leading competitor's JAC Riser product broke down at 63,600 cycles, which resulted in tube and ply separation, loss of electrical conductivity and overall kinking.

» After 124,000 cycles on the same test, the Platinum JAC Riser had no tube separation, maintained its electrical conductivity and experienced no kinking. The test was stopped at 124,000 cycles and the integrity of the hose was still intact.

Product Specifications

Application

Commercial and private aircraft fueling/defueling of avgas jet fuel

Construction Tube

Black Nitrile synthetic rubber

Cover

Black Wingprene® (ORS) static dissipating/static conductive synthetic rubber

Reinforcement

Spiral-plyed synthetic fabric

Temperature Range

-35°F to 200°F (-37°C to 93°C)

Packaging

Coiled and polywrapped.

Branding (Spiral)

Example: Continental ContiTech Platinum JAC RISER Aircraft fueling/Defueling Hose, NFPA 407 E1529/2014, ISO1825: 2010, Type E, Grade 2, 2000 kPa (300 psi) MAX WP

Order Codes

543-244

Platinum JAC Riser Hose

SAP #	ID		Max. WP		Weight	
	in.	mm	psi	MPa	lb./ft.	kg/m
20683391	2	50.8	300	2.07	1.43	2.13
20683393	3	76.2	300	2.07	2.02	3.01
20672228	4	101.6	300	2.07	2.89	4.3

Air & Multipurpose
General Purpose
Heavy Duty
Push-on

Chemical Transfer

Cleaning Equipment

Food
Transfer
Washdown

Marine

Material Handling
Abrasives
Bulk Transfer
Cement & Concrete

Mining

Petroleum
Aircraft Fueling
Dispensing
Dock
Transfer

Spray

Steam

Vacuum

LPG Delivery

Water
Discharge
Suction & Discharge
Washdown

Welding

Coupling Systems

Equipment

Appendix

Wingcraft™



Product Specifications

Application

For fueling or defueling* commercial and private aircraft. It handles jet fuel and the higher aromatic aviation gasolines. Its high working pressure permits use in fuel cart hydrant service. Hose meets API Bulletin 1529-6th edition, 2005 and N.F.P.A. Bulletin #407 (2007 revision).

Construction Tube

Black Nitrile synthetic rubber

Cover

Black Wingprene® (ORS) static dissipating/static conductive synthetic rubber

Reinforcement

Spiral-piled synthetic fabric

Temperature Range

-35°F to 200°F (-37°C to 93°C)

Packaging

Cut lengths, coiled and polywrapped

Branding

Example: Continental ContiTech Wingcraft™ Aircraft Fueling NFPA407, EI 15291/2014 Type C, Grade 2, 2", 2000 kPa (300 psi) MAX WP

Couplings

Contact fitting manufacturer for proper fitting recommendation and coupling procedures.

Non-Stock/Sizes

Custom lengths and fitting configurations available.

Order Codes

543-738 (1" to 3")

541-738 (4")

Wingcraft™

SAP #	ID		Nom. OD		Max. WP		Weight	
	in.	mm	in.	mm	psi	MPa	lb./ft.	kg/m
20018117	1	25.4	1.58	40.1	300	2.07	0.63	0.94
20018142	1¼	31.8	1.89	48.0	300	2.07	0.84	1.25
20016730	1½	38.1	2.13	54.1	300	2.07	0.96	1.43
20016784	2	50.8	2.72	69.1	300	2.07	1.43	2.13
20016778	2½	63.5	3.22	81.8	300	2.07	1.72	2.56
20190324	3	76.2	3.70	94.0	300	2.07	2.02	3.01
20016776	4	101.6	4.80	121.9	300	2.07	2.89	4.30

Note: Bulk hose and factory assemblies are hydrostatic tested to 600 psi and certified.

*Gravity defueling only

Air & Multipurpose

General Purpose

Heavy Duty

Push-on

Chemical Transfer

Cleaning Equipment

Food

Transfer

Washdown

Marine

Material Handling

Abrasives

Bulk Transfer

Cement & Concrete

Mining

Petroleum

Aircraft Fueling

Dispensing

Dock

Transfer

Spray

Steam

Vacuum

LPG Delivery

Water

Discharge

Suction & Discharge

Washdown

Welding

Coupling Systems

Equipment

Appendix

Jet Ranger™



Product Specifications

Application

Used in the fueling and defueling* of commercial and private aircraft. Resistant to jet fuel and higher aromatic aviation gasolines. Also for use on hydrant service. Meets both API 1529-6th edition, 2005 and European Standard BS EN 1361; 2004.

Construction Tube

Black Nitrile synthetic rubber

Cover

Black Wingprene® (ORS) static dissipating/static conductive synthetic rubber (wrapped finish)

Reinforcement

Spiral-plied (4) synthetic fabric and one nylon breaker

Temperature Range

-35°F to 200°F (-37°C to 93°C)

Packaging

Coiled and polywrapped

Branding (Spiral)

Example: Continental ContiTech Jet Ranger™ ISO 1825: 2010/C/OMEGA, NFPA 407 EI1529/2014 Type C, Grade 2, 2½", 2000 kPa/20 bars/300 psi MAX WP

Couplings

Contact fitting manufacturer for proper fitting recommendation and coupling procedures.

Order Codes

543-742 (1" to 3")
541-742 (4")

Jet Ranger™

SAP #	ID		Nom. OD		Max. WP		Weight	
	in.	mm	in.	mm	psi	MPa	lb./ft.	kg/m
20018250	1½	38.1	2.06	52.3	300	2.07	0.86	1.28
20046710	1¾	50.0	2.57	65.3	300	2.07	1.14	1.70
20099968	2½	63.5	3.16	80.3	300	2.07	1.53	2.28
20018276	3	76.2	3.64	92.5	300	2.07	1.79	2.66
20016044	4	101.6	5.00	127.0	300	2.07	3.70	5.51

Note: Bulk hose is factory hydrostatic tested to 600 psi.

*Gravity defueling only.

Air & Multipurpose
General Purpose
Heavy Duty
Push-on

Chemical Transfer

Cleaning Equipment

Food
Transfer
Washdown

Marine

Material Handling
Abrasives
Bulk Transfer
Cement & Concrete

Mining

Petroleum
Aircraft Fueling
Dispensing
Dock
Transfer

Spray

Steam

Vacuum

LPG Delivery

Water
Discharge
Suction & Discharge
Washdown

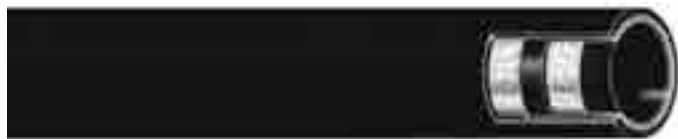
Welding

Coupling Systems

Equipment

Appendix

Advantage™



Product Specifications

Application

Advantage™ Aircraft Fueling hose is for over- and under-the-wing fueling of commercial and private aircraft. It handles jet fuel and av-gas up to 50% aromatic content.

Construction Tube

Black Nitrile synthetic rubber

Cover

Black Wingprene® (ORS) static dissipating/static conductive synthetic rubber (wrapped impression)

Reinforcement

Spiral-plied (2) synthetic fabric and one breaker

Temperature Range

-35°F to 200°F (-37°C to 93°C)

Packaging

Cut lengths, coiled and polywrapped.

Branding

Example: Continental ContiTech Advantage™ Aircraft Fueling Hose NFPA407, EI15291/2014 Type C, Grade 1, 1¼", 1000 kPa (150 psi) Max. WP

Couplings

Contact fitting manufacturer for proper fitting recommendation and coupling procedures.

Non-Stock/Sizes

Custom lengths and female fitting configurations available.

Order Codes

543-429

Advantage™

SAP #	ID		Nom. OD		Max. WP		Weight	
	in.	mm	in.	mm	psi	MPa	lb./ft.	kg/m
20017874	1	25.4	1.55	39.4	150	1.03	0.60	0.89
20017880	1¼	31.8	1.81	46.0	150	1.03	0.72	1.07
20017889	1½	38.1	2.11	53.6	150	1.03	0.96	1.43

Hose meets API Bulletin 1529-6th edition, 2005, Grade 1, Type C and N.F.P.A. Bulletin #407 (2001 revision).

Note: Bulk hose and factory assemblies are hydrostatic tested to 300 psi and certified.

Air & Multipurpose

General Purpose

Heavy Duty

Push-on

Chemical Transfer

Cleaning Equipment

Food

Transfer

Washdown

Marine

Material Handling

Abrasives

Bulk Transfer

Cement & Concrete

Mining

Petroleum

Aircraft Fueling

Dispensing

Dock

Transfer

Spray

Steam

Vacuum

LPG Delivery

Water

Discharge

Suction & Discharge

Washdown

Welding

Coupling Systems

Equipment

Appendix

Deadman Aircraft Refueling



Product Specifications

Application

The double-line Deadman Refueling hose is for automatic shutoff at the operator end of aircraft hydrant and truck refueling systems. Used with pneumatic closed circuit systems commonly referred to as single point pressure refueling. Deadman hose is connected to air-actuated shut-off valves, which are controlled by the refueler technician at all times during aircraft refueling operations.

Construction Tube

Nitrile synthetic rubber, RMA Class A (High Oil Resistance)

Cover

Red/Green, Green/Yellow Chemivic™ synthetic rubber, RMA Class A (High Oil Resistance)

Reinforcement

Spiral synthetic yarn

Temperature Range

-20°F to 140°F (-29°C to 60°C)

Packaging

450'-750', maximum 3 pieces, minimum 35'

Branding (Spiral)

Permanent contrasting black ink on the Red Hose only. Example: 1/4" ID. Aircraft Fueling Deadman. Made in U.S.A. Continental ContiTech

Couplings

Contact fitting manufacturer for proper fitting recommendation and coupling procedures.

Order Codes

569-601 (Red/Green)
569-692 (Green/Yellow)

Deadman Aircraft Refueling

SAP #		ID		Nom. OD		Max. WP		Weight	
Red/Green	Green/Yellow	in.	mm	in.	mm	psi	MPa	lb./ft.	kg/m
20027376	20477995	1/4	6.4	0.53	13.5	200	1.38	0.2	0.3

Air & Multipurpose
General Purpose
Heavy Duty
Push-on

Chemical Transfer

Cleaning Equipment

Food
Transfer
Washdown

Marine

Material Handling
Abrasives
Bulk Transfer
Cement & Concrete

Mining

Petroleum
Aircraft Fueling
Dispensing
Dock
Transfer

Spray

Steam

Vacuum

LPG Delivery

Water
Discharge
Suction & Discharge
Washdown

Welding

Coupling Systems

Equipment

Appendix

Refueling Sensing



Product Specifications

Application

The double-line Refueling Sensing hose is for use on pressurized aircraft hydrant fueling systems common at the larger metropolitan airports. The Sensing hose operates in a system where air and fuel from the underground hydrants monitor the flow and pressure of fuel being pumped into the aircraft. The hose carries the deadman function (automatic safety shutdown) and pressure control signals from the dispensing vehicle to the hydrant pit control valve.

Construction Tube

Nitrile synthetic rubber, RMA Class A (High Oil Resistance)

Cover

Orange/Black high-quality Hysunite™ synthetic rubber

Reinforcement

Spiral synthetic yarn

Temperature Range

-20°F to 140°F (-29°C to 60°C)

Packaging

450'-750' reels, maximum 3 pieces, minimum 35'

Branding

Permanent contrasting white ink on black hose only

Couplings

Contact fitting manufacturer for proper fitting recommendation and coupling procedures.

Order Codes

(Orange/Black) 569-604

Refueling Sensing

SAP #	ID		Nom. OD		Max. WP		Weight	
	in.	mm	in.	mm	psi	MPa	lb./ft.	kg/m
20027379	3/8	9.5	0.66	16.8	200	1.38	0.28	0.42

Air & Multipurpose

- General Purpose
- Heavy Duty
- Push-on

Chemical Transfer

Cleaning Equipment

Food

- Transfer
- Washdown

Marine

Material Handling

- Abrasives
- Bulk Transfer
- Cement & Concrete

Mining

Petroleum

- Aircraft Fueling
- Dispensing
- Dock Transfer

Spray

Steam

Vacuum

LPG Delivery

Water

- Discharge
- Suction & Discharge
- Washdown

Welding

Coupling Systems

Equipment

Appendix

Dispensing



	CUL and/or								
	Page	UL Approved	Gasoline	Diesel	Biodiesel*	Ethanol**	Wire Reinforcement	Textile Reinforcement	
Aggie Gas	172		Yes	Yes				Yes	
BC Cold Flex	173	Yes	Yes	Yes	Yes			Yes	
BC Gasoline	174	Yes	Yes	Yes	Yes			Yes	
BC Marina	175	Yes	Yes	Yes	Yes			Yes	
DEF Dispensing Hose	177							Yes	
Flexsteel Futura Ethan-ALL	180	Yes				Yes	Yes	Yes	
Flexsteel Futura	165		Yes	Yes	Yes		Yes		
Flexsteel Futura Low Perm	167		Yes	Yes	Yes		Yes		
Flexsteel Futura HVR	168		Yes	Yes	Yes		Yes		
Flexsteel Futura Vapor Assist	166	Yes	Yes				Yes		
Maxxim Premier	169	Yes	Yes				Yes		
Maxxim Premier Plus	170	Yes	Yes				Yes		
Pacer	171	Yes	Yes	Yes	Yes			Yes	

*Biodiesel blends up to B20

**Ethanol up to E85

Air & Multipurpose
General Purpose
Heavy Duty
Push-on

Chemical Transfer

Cleaning Equipment

Food
Transfer
Washdown

Marine

Material Handling
Abrasives
Bulk Transfer
Cement & Concrete

Mining

Petroleum
Aircraft Fueling
Dispensing
Dock
Transfer

Spray

Steam

Vacuum

LPG Delivery

Water
Discharge
Suction & Discharge
Washdown

Welding

Coupling Systems

Equipment

Appendix

Flexsteel® Futura™



Product Specifications

Application

Flexsteel® Futura™ with new Futurin™ cover resists cracking and fading, designed to dispense a wide range of fuels with extreme durability. The wire braid construction provides excellent kink resistance, low computer creep, and long service life. UL 330 and CUL approved.

Construction Tube

Nitrile synthetic rubber (ORS)

Cover

Futurin™ synthetic rubber (ORS)

Reinforcement

Wire braid

Temperature Range

-40°F to 140°F (-40°C to 60°C)

Packaging

5/8" and 3/4" - Reels or coupled lengths, 10 pieces per box
 1" - Reels or coupled lengths, 5 pieces per box

Branding

Example: Continental ContiTech 559N, Made in U.S.A. 3/4" (19mm) UL, CUL. Listed Flexsteel® Futura™

Couplings

Contact fitting manufacturer for proper fitting recommendation and coupling procedure.

Order Codes

532-327

Flexsteel® Futura™

ID		Nom. OD		Weight	
in.	mm	in.	mm	lb./ft.	kg/m
5/8	15.9	1.00	25.4	0.40	0.60
3/4	19.1	1.13	28.7	0.45	0.67
1	25.4	1.38	35.1	0.61	0.91

Air & Multipurpose

- General Purpose
- Heavy Duty
- Push-on

Chemical Transfer

Cleaning Equipment

- Food**
- Transfer
- Washdown

Marine

Material Handling

- Abrasives
- Bulk Transfer
- Cement & Concrete

Mining

Petroleum

- Aircraft Fueling
- Dispensing
- Dock Transfer

Spray

Steam

Vacuum

LPG Delivery

Water

- Discharge
- Suction & Discharge
- Washdown

Welding

Coupling Systems

Equipment

Appendix

Flexsteel® Futura™ Vapor Assist



Product Specifications

Application

For Stage II Vacuum Assist Systems where a pump in the dispenser pulls the gasoline vapors away from the vehicle fill pipe during fueling. The wire-braid construction for the fuel hose provides excellent kink resistance, low computer creep and long service life. Flexsteel® Futura™ Vapor Assist is UL 330 approved.

Construction Tube

Nitrile synthetic rubber (ORS)

Cover

Futurin™ synthetic rubber (ORS)

Reinforcement

Braided (1) steel wire

Temperature Range

-40°F to 140°F (-40°C to 60°C)

Packaging

Coupled lengths only, 6 pieces per box

Branding

Example: 3/4" Continental ContiTech Made in U.S.A. UL Listed Flexsteel® Futura™ Vapor Assist

Example: 7/8" Continental ContiTech Made in U.S.A. UL Listed Flexsteel® Futura™ Vapor Assist

Couplings

Available only as factory coupled assembly.

Order Codes

532-362

Flexsteel® Futura™ Vapor Assist

ID		Nom. OD		Weight	
in.	mm	in.	mm	lb./ft.	kg/m
3/4	19.1	1.13	28.7	0.45	0.67
7/8	22.2	1.25	31.8	0.49	0.73

Air & Multipurpose
General Purpose
Heavy Duty
Push-on

Chemical Transfer

Cleaning Equipment

Food
Transfer
Washdown

Marine

Material Handling
Abrasives
Bulk Transfer
Cement & Concrete

Mining

Petroleum
Aircraft Fueling
Dispensing
Dock
Transfer

Spray

Steam

Vacuum

LPG Delivery

Water
Discharge
Suction & Discharge
Washdown

Welding

Coupling Systems

Equipment

Appendix

New Flexsteel® Futura™ Low Perm



The First UL-Approved Low Permeation Gasoline Dispensing Hose Available to the Market

The Flexsteel® Futura™ Low Perm dispensing hose offers superior, long-lasting service with multi-fuel capability. This hose is designed for use at filling stations to reduce permeation rates to 10 grams/m²/day and improve air quality and emissions.

- › Premium abuse-resistant cover compound with enhanced ozone resistance for service longevity
- › Meets UL330 requirements for conventional and vapor recovery
- › Meets stringent permeation requirements of less than 10 grams/m²/day

The Flexsteel® Futura™ Low Perm dispensing hose is the only low permeation gasoline hose available with the following specifications:

Product Code

532-338-024

Dimensions

Size.	ID in.	OD in.	Working Pressure
3/4	0.720-0.780"	1.115-1.165"	50 psi

Tube

Nitrile synthetic rubber with Fluorothermoplastice barrier layer

Braid

Single wire braid

Cover

Futurin™ synthetic rubber

Permeation

Meets UL330 permeation limit of 10 grams/m²/day

Branding

Listed to UL330.

3/4" Straight and Swivels available with NPT threads.

Air & Multipurpose

- General Purpose
- Heavy Duty
- Push-on

Chemical Transfer

Cleaning Equipment

Food

- Transfer
- Washdown

Marine

Material Handling

- Abrasives
- Bulk Transfer
- Cement & Concrete

Mining

Petroleum

- Aircraft Fueling
- Dispensing
- Dock Transfer

Spray

Steam

Vacuum

LPG Delivery

Water

- Discharge
- Suction & Discharge
- Washdown

Welding

Coupling Systems

Equipment

Appendix

Flexsteel® Futura™ HVR



Product Specifications

Application

- › Premium abuse-resistant cover compound with enhanced ozone resistance for service longevity
- › Meets UL330, CARB, ORVR and EVR requirements
- › Factory-made assemblies with fittings designed for Healy Stage II Enhanced Vapor Recovery (EVR) Systems compatibility

Construction Tube

Nitrile synthetic rubber (ORS)

Cover

Futurin™ synthetic rubber (ORS)

Reinforcement

Braided (1) steel wire

Temperature Range

-40°F to 140°F (-40°C to 60°C)

Packaging

Coupled lengths only, 6 pieces per box

Branding

Example: 3/4" Continental ContiTech Made in U.S.A., UL Listed Flexsteel® Futura™ HVR Continental ContiTech Made in U.S.A.,

Couplings

Available only as factory coupled assembly.

Non-Stock/Sizes

For special production run minimum requirements, contact customer service

Order Codes

532-330

Flexsteel® Futura™ HVR

ID		Nom. OD		Weight	
in.	mm	in.	mm	lb./ft.	kg/m
3/4	19.1	1.13	28.7	0.45	0.67

Air & Multipurpose
General Purpose
Heavy Duty
Push-on

Chemical Transfer

Cleaning Equipment

Food
Transfer
Washdown

Marine

Material Handling
Abrasives
Bulk Transfer
Cement & Concrete

Mining

Petroleum
Aircraft Fueling
Dispensing
Dock
Transfer

Spray

Steam

Vacuum

LPG Delivery

Water
Discharge
Suction & Discharge
Washdown

Welding

Coupling Systems

Equipment

Appendix

Maxxim™ Premier



Air & Multipurpose
 General Purpose
 Heavy Duty
 Push-on

Chemical Transfer

Cleaning Equipment

Food
 Transfer
 Washdown

Marine

Material Handling
 Abrasives
 Bulk Transfer
 Cement & Concrete

Mining

Petroleum
 Aircraft Fueling
 Dispensing
 Dock
 Transfer

Spray

Steam

Vacuum

LPG Delivery

Water
 Discharge
 Suction & Discharge
 Washdown

Welding

Coupling Systems

Equipment

Appendix

Product Specifications

Application

For Stage II Balance Systems where the gasoline vapors from the fill pipe are pushed back through the outer hose. The outer vapor hose has a textile-reinforced thermoplastic layer over a wire helix. The textile-reinforced thermoplastic cover has maximum puncture resistance, stable dimensions and long service life. The wire braid construction for the fuel hose provides excellent kink resistance and low computer creep. Maxxim™ Premier hose is C.A.R.B. and UL 330 approved.

Construction Tube

Nitrile synthetic rubber (ORS)

Cover

Chemivic™ synthetic rubber (ORS), thermoplastic outer with textile reinforcement and wire helix

Reinforcement

Braided (1) steel wire

Temperature Range

-40°F to 140°F (-40°C to 60°C)

Packaging

Coupled lengths only, 6 pieces per box

Branding

Not branded

Couplings

Available only as factory coupled assembly.

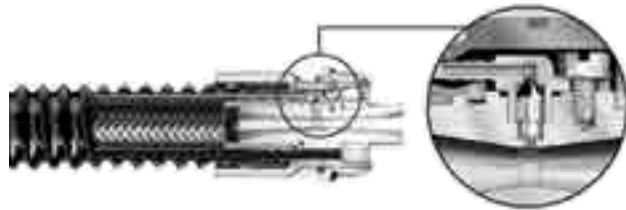
Order Codes

532-365-440

Maxxim™ Premier

ID		ID-Inner Hose		Nom. OD-Inner Hose		Weight-Inner Hose	
in.	mm	in.	mm	psi	MPa	lb./ft.	kg/m
1¼	31.75	5/8	15.9	0.85	21.6	0.22	0.33

Maxxim™ Premier Plus



Product Specifications

Application

Maxxim™ Premier Plus incorporates a Venturi pump in the protected confines of the inner fuel hose coupling to keep the vapor path open in the outer hose. As gasoline flows through the Venturi pump, gasoline accumulating in the bottom loop of the vapor hose is collected and returned to the fuel hose. C.A.R.B., EVR and UL 330 approved.

Construction Tube

Nitrile synthetic rubber (ORS)

Cover

Chemivic™ synthetic rubber (ORS), thermoplastic outer with textile reinforcement and wire helix.

Reinforcement

Braided (1) steel wire

Temperature Range

-40°F to 140°F (-40°C to 60°C)

Packaging

Coupled lengths only, 6 pieces per box

Branding

Not branded

Couplings

Available only as factory coupled assembly.

Order Codes

532-365-441
532-365-641 (EVR)

Maxxim™ Premier Plus

ID		ID-Inner Hose		Nom. OD-Inner Hose		Weight-Inner Hose	
in.	mm	in.	mm	psi	MPa	lb./ft.	kg/m
1 1/4	31.75	5/8	15.9	0.85	21.6	0.22	0.33

Air & Multipurpose
General Purpose
Heavy Duty
Push-on

Chemical Transfer

Cleaning Equipment

Food
Transfer
Washdown

Marine

Material Handling
Abrasives
Bulk Transfer
Cement & Concrete

Mining

Petroleum
Aircraft Fueling
Dispensing
Dock
Transfer

Spray

Steam

Vacuum

LPG Delivery

Water
Discharge
Suction & Discharge
Washdown

Welding

Coupling Systems

Equipment

Appendix

Pacer™



Product Specifications

Application

For all types of gasoline dispensing applications where flexibility and a lightweight hose is desired. Pacer™ is designed with a spiral textile reinforcement. UL 330 and CUL approved.

Construction Tube

Nitrile synthetic rubber (ORS)

Cover

Chemivic™ synthetic rubber (ORS)

Reinforcement

Spiral synthetic yarn with static wire

Temperature Range

-40°F to 140°F (-40°C to 60°C)

Packaging

Reels or coupled lengths

Branding

Example: 3/4" Pacer™ Continental ContiTech

Couplings

Contact fitting manufacturer for proper fitting recommendation and coupling procedure.

Order Codes

Available in bulk and coupled assemblies.

Pacer™

ID		Nom. OD		Weight	
in.	mm	in.	mm	lb./ft.	kg/m
5/8	15.9	0.98	24.9	0.28	0.42
3/4	19.1	1.15	29.2	0.37	0.55
1	25.4	1.50	38.1	0.60	0.89

Air & Multipurpose

- General Purpose
- Heavy Duty
- Push-on

Chemical Transfer

Cleaning Equipment

Food

- Transfer
- Washdown

Marine

Material Handling

- Abrasives
- Bulk Transfer
- Cement & Concrete

Mining

Petroleum

- Aircraft Fueling
- Dispensing
- Dock Transfer

Spray

Steam

Vacuum

LPG Delivery

Water

- Discharge
- Suction & Discharge
- Washdown

Welding

Coupling Systems

Equipment

Appendix

Aggie Gas™



Product Specifications

Application

A multi-use type hose for dispensing gasoline, grease, kerosene, and petroleum oils from farm and barrel type pumps. It is for agricultural, construction and industrial service where UL approval is not required.

Construction Tube

Nitrile synthetic rubber (ORS)

Cover

Black or red Chemivic™ synthetic rubber (ORS)

Reinforcement

Spiral synthetic yarn

Temperature Range

-30°F to 140°F (-34°C to 60°C)

Packaging

Reels or coupled lengths, 5 pieces per box

Branding

Example: Aggie Gas™ 3/4" (19.1mm) Static Bonded Continental ContiTech

Couplings

Contact fitting manufacturer for proper fitting recommendation and coupling procedure.

Aggie Gas™ - No Static Wire

Order Codes: 595-001 (no static wire) (black) 595-002 (no static wire) (red)

3/4" SAP: 20028755 (8'), 20028757 (10'), 20028759 (12'), 20028761 (14')

1" SAP: 20028755 (8'), 20028742 (10'), 20028744 (12'), 20028746 (14')

ID		Nom. OD		Weight	
in.	mm	in.	mm	lb./ft.	kg/m
3/4	19.1	1.11	28.2	0.27	0.40
1	25.4	1.40	35.6	0.52	0.77

Aggie Gas™ - With Static Wire

Order Codes: 595-026 (with static wire - bulk) (black) 595-028 (with static wire) - factory coupled assemblies) (black)

3/4" SAP: 20352464 (8'), 20352465 (10'), 20352504 (12'), 20352507 (14')

1" SAP: 20352551 (8'), 20352552 (10'), 20352535 (12')

ID		Nom. OD		Weight	
in.	mm	in.	mm	lb./ft.	kg/m
3/4	19.1	1.11	28.2	0.27	0.40
1	25.4	1.40	35.6	0.52	0.77

Air & Multipurpose
General Purpose
Heavy Duty
Push-on

Chemical Transfer

Cleaning Equipment

Food
Transfer
Washdown

Marine

Material Handling
Abrasives
Bulk Transfer
Cement & Concrete

Mining

Petroleum
Aircraft Fueling
Dispensing
Dock
Transfer

Spray

Steam

Vacuum

LPG Delivery

Water
Discharge
Suction & Discharge
Washdown

Welding

Coupling Systems

Equipment

Appendix

BC Cold Flex



Product Specifications

Application

A premium gas pump hose for use in extremely cold environments. Remains flexible where temperatures of -65°F (-54°C) are encountered. UL 330 and CUL approved. The only UL approved cold temperature

Construction Tube

Black, low-temp synthetic rubber

Cover

Black, low-temp synthetic rubber (wrapped finish)

Reinforcement

Braided synthetic yarn with antistatic wire

Temperature Range

-65°F to 140°F (-54°C to 60°C)

Packaging

500' reels +/- 50'; minimum 50'; maximum 3 pieces
Premade assemblies available

Branding

Example: Continental ContiTech 559 N, Made in U.S.A. 3/4" (19mm) UL, CUL Listed BC Cold Flex Gasoline Hose

Couplings

Use Continental ContiTech Fuelgrip Fittings for proper fitting recommendation and coupling procedure.

Order Codes

532-395

BC Cold Flex

SAP #	ID		Nom. OD		Weight	
	in.	mm	in.	mm	lb./ft.	kg/m
20195843	3/4	19.1	1.13	28.7	0.32	0.48
20195844	1	25.4	1.50	38.1	0.57	0.85

Air & Multipurpose

- General Purpose
- Heavy Duty
- Push-on

Chemical Transfer

Cleaning Equipment

- Food Transfer
- Washdown

Marine

Material Handling

- Abrasives
- Bulk Transfer
- Cement & Concrete

Mining

Petroleum

- Aircraft Fueling
- Dispensing
- Dock Transfer

Spray

Steam

Vacuum

LPG Delivery

Water

- Discharge
- Suction & Discharge
- Washdown

Welding

Coupling Systems

Equipment

Appendix

BC Gasoline



Product Specifications

Application

For all types of dispensing pump applications where flexibility and lightweight are desired. BC is available with one or two textile braids. UL 330 and CUL approved.

Construction Tube

Nitrile synthetic rubber (ORS)

Cover

Black Chemivic™ synthetic rubber (ORS)

Reinforcement

Braided synthetic yarn with static wire, available in one or two braid

Temperature Range

-40°F to 140°F (-40°C to 60°C)

Packaging

5/8" and 3/4" - Reels or coupled lengths, 10 pieces per box

1" - Reels or coupled lengths, 5 pieces per box

Branding

Example: 1" (25.4mm) 2BD. CUL, UL Listed style BC Gasoline Continental ContiTech 559N. Made in U.S.A.

Couplings

Contact fitting manufacturer for proper fitting recommendation and coupling procedure.

Order Codes

532-012 (1 braid)

532-013 (2 braid)

532-314 (Blue)

532-313 (Red)

532-309 (Green)

BC Gasoline (1 Braid)

SAP #	ID		Nom. OD		Weight	
	in.	mm	in.	mm	lb./ft.	kg/m
20014734	5/8	15.9	1.00	25.4	0.28	0.42
20014738	3/4	19.1	1.13	28.7	0.32	0.48

BC Gasoline (2 Braid)

SAP #	ID		Nom. OD		Weight	
	in.	mm	in.	mm	lb./ft.	kg/m
20021581	5/8	15.9	1.00	25.4	0.24	0.36
20021585	3/4	19.1	1.19	30.2	0.37	0.55
20021591	1	25.4	1.50	38.1	0.55	0.82

Air & Multipurpose
General Purpose
Heavy Duty
Push-on

Chemical Transfer

Cleaning Equipment

Food
Transfer
Washdown

Marine

Material Handling
Abrasives
Bulk Transfer
Cement & Concrete

Mining

Petroleum
Aircraft Fueling
Dispensing
Dock
Transfer

Spray

Steam

Vacuum

LPG Delivery

Water
Discharge
Suction & Discharge
Washdown

Welding

Coupling Systems

Equipment

Appendix

BC Marina



Product Specifications

Application

For dispensing gasoline to pleasure craft and commercial boats at fresh and salt water marinas. UL 330 and CUL approved.

Construction Tube

Nitrile synthetic rubber (ORS)

Cover

Green Chemivic™ synthetic rubber (ORS) (nonmarking)

Reinforcement

Braided (2) synthetic yarn with static wire

Temperature Range

-40°F to 140°F (-40°C to 60°C)

Packaging

Reels or coupled lengths

Branding

Example: 1" (25.4mm) 2BD. UL Listed Marina Gasoline Continental ContiTech 559N. Made in U.S.A.

Couplings

Contact fitting manufacturer for proper fitting recommendation and coupling procedure.

Order Codes

532-293

BC Marina

SAP#	ID		Nom. OD		Weight	
	in.	mm	in.	mm	lb./ft.	kg/m
20021819	3/4	19.1	1.19	30.2	0.38	0.57
20021826	1	25.4	1.50	38.1	0.57	0.85

Air & Multipurpose

- General Purpose
- Heavy Duty
- Push-on

Chemical Transfer

Cleaning Equipment

- Food Transfer
- Washdown

Marine

Material Handling

- Abrasives
- Bulk Transfer
- Cement & Concrete

Mining

Petroleum

- Aircraft Fueling
- Dispensing
- Dock Transfer

Spray

Steam

Vacuum

LPG Delivery

Water

- Discharge
- Suction & Discharge
- Washdown

Welding

Coupling Systems

Equipment

Appendix

Flexsteel® Futura™ Ethan-ALL™ Dispensing Hose Assembly



Product Specifications

Application

Flexsteel® Futura™ Ethan-ALL™ dispensing hose assembly is UL certified for use in ethanol dispensing applications up to E85. This new assembly provides the quality Futurin™ cover with its superior ozone resistance along with a new premium layline. The tube construction meets the E25/E85 compatibility test requirements of UL 87A.

The Flexsteel® Futura™ Ethan-ALL™ dispensing hose assembly uses the Continental ContiTech proprietary Fuel Grip™ fitting with a premium nickel coating to ensure corrosion is limited.

Construction Tube

Nitrile synthetic rubber

Cover

Futurin™ synthetic rubber

Reinforcement

Wire braid

Temperature Range

-40°F to 140°F (-40°C to 60°C)

Packaging

Coupled assemblies only

Branding

Example: 3/4" (UL) Listed Continental ContiTech Flexsteel® Futura™ Ethan-ALL™ E85 559N. Made in U.S.A.

Order Codes

532-337-124

Flexsteel® Futura™ Ethan-ALL™ Dispensing Hose Assembly

ID		OD		Max. WP		Weight	
in.	mm	in.	mm	psi	MPa	lb./ft.	kg/m
3/4	19.1	1.13	28.7	50	0.34	0.46	0.69

Air & Multipurpose
General Purpose
Heavy Duty
Push-on

Chemical Transfer

Cleaning Equipment

Food
Transfer
Washdown

Marine

Material Handling
Abrasives
Bulk Transfer
Cement & Concrete

Mining

Petroleum
Aircraft Fueling
Dispensing
Dock
Transfer

Spray

Steam

Vacuum

LPG Delivery

Water
Discharge
Suction & Discharge
Washdown

Welding

Coupling Systems

Equipment

Appendix

DEF Dispensing Hose



Product Specifications

Application

Diesel Exhaust Fluid (DEF: aqueous 32.5% nitrogen solution of high-purity urea in deionized water) is a key component of selective catalytic reduction (SCR) systems, which help diesel vehicles meet stringent emission regulations effective January 1, 2010. DEF is a liquid reducing agent that reacts with engine exhaust in the presence of a catalyst to convert smog-forming nitrogen oxides (NOx) into harmless nitrogen and water vapor.

Continental ContiTech is specifically designed to convey the high-purity, aqueous urea solution DEF. Hose tube compound is specially formulated with low extraction EPDM and peroxide cured to provide superior extraction levels to significantly reduce contamination. Flexible softwall construction provides superior handling in standard dispensing and reeling applications. Static wire available for installation in Class I, Division 1 areas.

Construction Tube

Specially formulated low-extraction EPDM, peroxide cured

Cover

Specially formulated EPDM

Reinforcement

Polyester braid

Temperature Range

-40°F to 140°F (-40°C to 60°C)

Packaging

Bulk, coupled assemblies (NPT and BSPP fittings available)

Branding

Example: Continental ContiTech DEF Dispensing Hose 3/4" (19.1mm)

Order Codes

532-027

Assemblies available

DEF Dispensing Hose

Features	Benefits
Specially formulated low extraction EPDM compound for tube peroxide cured	Provides superior extraction levels to significantly reduce contamination that can clog an SCR system and stop a truck
Enhanced manufacturing practices	Significantly reduce contamination that can clog an SCR system and stop a truck
Premium braided construction	Reduced volumetric expansion to meet Weights and Measures system criteria
Static wire	Requirement for installations in Class I, Division 1 areas as outlined in NFPA 70
Meets ISO 22241 standard	Ensures desirable characteristics of AUS 32 (DEF) are met, such as quality, safety, reliability and contamination

DEF Dispensing Hose

SAP #	ID	Nom. OD		Weight		Max WP		
		in.	mm	lb./ft.	kg/m	psi	MPa	
20554236	1/2	12.7	0.89	22.6	0.21	0.31	250	1.72
20528917	3/4	19.1	1.13	28.8	.30	0.46	250	1.72
20686517	1	25.4	1.45	36.8	0.42	0.62	250	1.72

Air & Multipurpose

General Purpose

Heavy Duty

Push-on

Chemical Transfer

Cleaning Equipment

Food

Transfer

Washdown

Marine

Material Handling

Abrasives

Bulk Transfer

Cement & Concrete

Mining

Petroleum

Aircraft Fueling

Dispensing

Dock

Transfer

Spray

Steam

Vacuum

LPG Delivery

Water

Discharge

Suction & Discharge

Washdown

Welding

Coupling Systems

Equipment

Appendix

Dock



	Page	Nitrile Tube	Flosyn Tube	Max WP	Corrugated	Temp. Range	Built-in Nipple	Swage Nipple*
Flexdock 225	179	Yes	Yes	225	Yes	-25°F to 200°F (-32°C to 93°C)	Yes	Yes
Flexdock 300	180	Yes	Yes	300	Yes	-25°F to 200°F (-32°C to 93°C)	Yes	Yes
Hot Tar & Asphalt Rough Bore	188	Yes		200		-25°F to 350°F (-32°C to 177°C)	Yes	
Hot Tar & Asphalt Smooth Bore	188	Yes		200		-25°F to 350°F (-32°C to 177°C)	Yes	
Smooth Bore Dock 200	181	Yes	Yes	200		-25°F to 200°F (-32°C to 93°C)	Yes	Yes
Smooth Bore Dock 300	182	Yes	Yes	300		-25°F to 200°F (-32°C to 93°C)	Yes	Yes
Tanker Barge Discharge	183	Yes	Yes	200		-25°F to 220°F (-32°C to 105°C)	Yes	Yes
Oil Rig Service with Integral Positive Float System	189-190			290		-22°F to 180°F (-30°C to 82°C)		
Plicord Dock Hose	187			225		-25°F to 180°F (-32°C to 82°C)		
Plicord HW Dry Cement/Barytes	185			150		-22°F to 180°F (-30°C to 82°C)		
Plicord SW Dry Cement/Barytes	186			150		-22°F to 180°F (-30°C to 82°C)		
RB Dock Asphalt & Bitumen EN 13482	191			225		-30°F to 392°F (-37°C to 200°C)	Yes	
SB Dock Asphalt & Bitumen EN 13482	192			225		-30°F to 392°F (-37°C to 200°C)	Yes	
Vapor Recovery Dock	184	Yes	Yes	25	Yes	-25°F to 200°F (-32°C to 93°C)	Yes	Yes

Up to 10" ID

Air & Multipurpose
General Purpose
Heavy Duty
Push-on

Chemical Transfer

Cleaning Equipment

Food
Transfer
Washdown

Marine

Material Handling
Abrasives
Bulk Transfer
Cement & Concrete

Mining

Petroleum
Aircraft Fueling
Dispensing
Dock
Transfer

Spray

Steam

Vacuum

LPG Delivery

Water
Discharge
Suction & Discharge
Washdown

Welding

Coupling Systems

Equipment

Appendix

Flexdock® 225



Product Specifications

Application

Built with a corrugated cover to provide flexibility in petroleum transfer service. A variety of tube compounds are available to tailor the chemical and hydrocarbon resistance of the hose to the type of material handled.

Construction Tube

Nitrile synthetic rubber for up to 50% aromatics. Also available with a Flosyn® tube for up to 100% aromatics.

Cover

Black Wingprene® synthetic cover, corrugated, wrapped finish

Reinforcement

Spiral-plied heavy-duty synthetic fabric with double wire helix

Temperature Range

-25°F to 200°F (-32°C to 93°C)

Packaging

Chloroplast heavy-duty packaging

Branding (Spiral)

Example: Continental ContiTech Flexdock® 225 psi WP Nitrile Oil Service

Couplings

Coupled with standard built-in steel nipple/150#RFSO flanges. Available in other bolt hole patterns, materials and floating flanges on request. Swage nipples are offered up to 10". Hose assembly is electrically continuous unless otherwise specified by customer.

Non-Stock/Sizes

Custom lengths available, contact Customer Service.

Order Codes

541-532 (Nitrile tube)
541-534 (Flosyn® tube)

Flexdock® 225

SAP #		ID		Nom. OD		Max. WP		Bend Radius		Vacuum HG		Weight	
Nitrile Tube	Flosyn Tube	in.	mm	in.	mm	psi	MPa	in.	mm	in.	mm	lb./ft.	kg/m
20346713	20424276	3	76.2	3.89	98.8	225	1.55	11	279	29	737	3.28	4.88
20655171	20054995	4	101.6	5.29	134.4	225	1.55	15	381	29	737	6.30	9.38
20032061	20054996	6	152.4	7.34	186.4	225	1.55	22	559	29	737	9.50	14.14
20476794	20129447	8	203.2	9.43	239.5	225	1.55	30	762	29	737	13.81	20.55
20098252	20139283	10	254.0	11.63	295.4	225	1.55	40	1016	29	737	20.49	30.49
20704428	20424277	12	304.8	13.72	348.5	225	1.55	60	1524	29	737	25.13	37.40

Note: Factory coupled hose manufactured according to the code of Federal Regulations Standard 33 CFR 154.500 and 33 CFR 156.170.

Air & Multipurpose

General Purpose

Heavy Duty

Push-on

Chemical Transfer

Cleaning Equipment

Food

Transfer

Washdown

Marine

Material Handling

Abrasives

Bulk Transfer

Cement & Concrete

Mining

Petroleum

Aircraft Fueling

Dispensing

Dock

Transfer

Spray

Steam

Vacuum

LPG Delivery

Water

Discharge

Suction & Discharge

Washdown

Welding

Coupling Systems

Equipment

Appendix

Flexdock® 300



Product Specifications

Application

Built with a corrugated cover to provide flexibility in petroleum transfer service. A variety of tube compounds are available to tailor the chemical and hydrocarbon resistance of the hose to the type of material handled.

Construction Tube

Nitrile synthetic rubber for up to 50% aromatics. Also available with a Flosyn® tube for up to 100% aromatics.

Cover

Black Wingprene® synthetic cover, corrugated, wrapped finish

Reinforcement

Heavy-duty synthetic fabric plies with double wire helix

Temperature Range

-25°F to 200°F (-32°C to 93°C)

Packaging

Chloroplast heavy-duty packaging

Branding (Spiral)

Example: Continental ContiTech Flexdock® 300 psi WP Nitrile Oil Service

Couplings

Coupled with standard built-in steel nipple/150#RF50 flanges. Available in other bolt hole patterns, materials and floating flanges on request. Swage nipples are offered up to 10". Hose assembly is electrically continuous unless otherwise specified by customer.

Non-Stock/Sizes

Custom lengths available, contact Customer Service.

Order Codes

541-533 (Nitrile Tube)
541-535 (Flosyn® tube)

Flexdock® 300

SAP #		ID		Nom. OD		Max. WP		Bend Radius		Vacuum HG		Weight	
Nitrile Tube	Flosyn Tube	in.	mm	in.	mm	psi	MPa	in.	mm	in.	mm	lb./ft.	kg/m
20015736	20307537	4	101.6	5.29	134.4	300	2.07	19	483	29	737	6.30	9.38
20015748	20169212	6	152.4	7.35	186.7	300	2.07	28	711	29	737	9.64	14.35
20015764	20160411	8	203.2	9.63	244.6	300	2.07	38	965	29	737	15.56	23.16
20546829		10	254.0	11.51	292.4	300	2.07	48	1219	29	737	19.73	29.36
20015774	20590479	12	305.5	13.94	353.9	300	2.07	58	1473	29	737	28.89	42.98

Note: Factory coupled hose manufactured according to the code of Federal Regulations Standard 33 CFR 154.500 and 33 CFR 156.170.

Air & Multipurpose
General Purpose
Heavy Duty
Push-on

Chemical Transfer

Cleaning Equipment

Food
Transfer
Washdown

Marine

Material Handling
Abrasives
Bulk Transfer
Cement & Concrete

Mining

Petroleum
Aircraft Fueling
Dispensing
Dock
Transfer

Spray

Steam

Vacuum

LPG Delivery

Water
Discharge
Suction & Discharge
Washdown

Welding

Coupling Systems

Equipment

Appendix

Smooth Bore Dock 200



Product Specifications

Application

For the transfer of petroleum-based products between docks and ships under all types of service conditions. It is available in a number of tube compounds to tailor the fluid handling capabilities to a wide variety of petroleum and chemical compositions.

Construction Tube

Nitrile synthetic rubber for up to 50% aromatics. Also available with a Flosyn® tube for up to 100% aromatics.

Cover

Black Chemivic™ (smooth cover, wrap finish)

Reinforcement

Spiral plied synthetic fabric with wire helix

Temperature Range

-25°F to 200°F (-32°C to 93°C)

Packaging

Chloroplast heavy-duty packaging

Branding (Spiral)

Example: Continental ContiTech SB Dock oil service, 200 psi WP Nitrile

Couplings

Coupled with standard built-in steel nipple/150#RFSSO flanges. Available in other bolt hole patterns, materials and floating flanges on request. Swage nipples are offered up to 10". Hose assembly is electrically continuous unless otherwise specified by customer.

Non-Stock/Sizes

Custom lengths available, contact Customer Service.

Order Codes

541-004 (Nitrile Tube)
541-586 (Flosyn® Tube)

Smooth Bore Dock 200

SAP #	ID	Nom. OD		Max. WP		Bend Radius		Vacuum HG		Weight			
		Nitrile Tube	Flosyn Tube	in.	mm	psi	MPa	in.	mm	in.	mm	lb./ft.	kg/m
20014752	20248891	4	101.6	5.29	134.4	200	1.38	24	610	29	737	6.15	9.15
20014760	20170662	6	152.4	7.45	189.2	200	1.38	36	914	29	737	11.27	16.77
20014771	20015908	8	203.2	9.62	244.4	200	1.38	48	1219	29	737	16.44	24.46
20452847	20015912	10	254.0	11.62	295.2	200	1.38	60	1524	29	737	21.21	31.56
20014790		12	304.8	13.94	354.1	200	1.38	72	1829	29	737	30.63	45.58

Note: Factory coupled hose manufactured according to the code of Federal Regulations Standard 33 CFR 154.500 and 33 CFR 156.170.

Air & Multipurpose

General Purpose

Heavy Duty

Push-on

Chemical Transfer

Cleaning Equipment

Food

Transfer

Washdown

Marine

Material Handling

Abrasives

Bulk Transfer

Cement & Concrete

Mining

Petroleum

Aircraft Fueling

Dispensing

Dock

Transfer

Spray

Steam

Vacuum

LPG Delivery

Water

Discharge

Suction & Discharge

Washdown

Welding

Coupling Systems

Equipment

Appendix

Smooth Bore Dock 300



Product Specifications

Application

For the transfer of petroleum-based products between docks and ships under all types of service conditions. It is available in a number of tube compounds to tailor the fluid handling capabilities to a wide variety of petroleum and chemical compositions.

Construction Tube

Nitrile synthetic rubber for up to 50% aromatics. Also available with a Flosyn® tube for up to 100% aromatics.

Cover

Black Wingprene® synthetic rubber

Reinforcement

Spiral wire helix between plies of synthetic fabric

Temperature Range

-25°F to 200°F (-32°C to 93°C)

Packaging

Chloroplast heavy-duty packaging

Branding (Spiral)

Example: Continental ContiTech SB Dock oil service, 300 psi WP Nitrile

Couplings

Coupled with standard built-in steel nipple/150#RFSSO flanges. Available in other bolt hole patterns, materials and floating flanges on request. Swage nipples are offered up to 10". Hose assembly is electrically continuous unless otherwise specified by customer.

Non-Stock/Sizes

Custom lengths available, contact Customer Service.

Order Codes

541-580 (Nitrile Tube)
541-584 (Flosyn® Tube)

Smooth Bore Dock 300

SAP #		ID		Nom. OD		Max. WP		Bend Radius		Vacuum HG		Weight	
Nitrile Tube	Flosyn Tube	in.	mm	in.	mm	psi	MPa	in.	mm	in.	mm	lb./ft.	kg/m
20274024	20170523	4	101.6	5.29	134.4	300	2.07	27	686	29	737	6.15	9.15
20266243	20015899	8	203.2	9.78	248.4	300	2.07	51	1295	29	737	17.93	26.68
20406529		10	254.0	11.77	299.0	300	2.07	63	1600	29	737	22.99	34.21
20704654		12	304.8	14.15	359.4	300	2.07	75	1905	29	737	33.29	49.54

Note: Factory coupled hose manufactured according to the code of Federal Regulations Standard 33 CFR 154.500 and 33 CFR 156.170.

Air & Multipurpose
General Purpose
Heavy Duty
Push-on

Chemical Transfer

Cleaning Equipment

Food
Transfer
Washdown

Marine

Material Handling
Abrasives
Bulk Transfer
Cement & Concrete

Mining

Petroleum
Aircraft Fueling
Dispensing
Dock
Transfer

Spray

Steam

Vacuum

LPG Delivery

Water
Discharge
Suction & Discharge
Washdown

Welding

Coupling Systems

Equipment

Appendix

Tanker Barge Discharge



Product Specifications

Application

For discharge applications such as the transfer of petroleum-based products between docks and barges.

Construction Tube

Nitrile synthetic rubber for up to 50% aromatics

Cover

Black Wingprene® synthetic rubber

Reinforcement

Spiral-plied synthetic fabric with grounding wires

Temperature Range

-25°F to 220°F (-32°C to 104°C)

Packaging

Chloroplast heavy-duty packaging

Branding (Spiral)

Example: Continental ContiTech Tanker Barge Discharge, 200 psi WP Nitrile

Couplings

Coupled with standard built-in steel nipple/150#RFSO flanges. Available in other bolt hole patterns, materials and floating flanges on request. Swage nipples are offered up to 10". Hose assembly is electrically continuous unless otherwise specified by customer.

Non-Stock/Sizes

Custom lengths available, contact Customer Service.

Order Codes

541-426 (Nitrile tube)

Tanker Barge Discharge

SAP #	ID	Nom. OD		Max. WP		Weight		
		in.	mm	in.	mm	lb./ft.	kg/m	
20045864	4	101.6	5.09	129.3	200	1.38	4.30	6.40
20104917	6	152.4	7.08	179.8	200	1.38	6.18	9.20
20136624	8	203.2	9.08	230.6	200	1.38	8.06	11.99
20015537	10	254.0	11.06	280.9	200	1.38	9.93	14.78
20259811	12	304.8	13.28	337.3	200	1.38	13.91	20.70

Note: Factory coupled hose manufactured according to the code of Federal Regulations Standard 33 CFR 154.500 and 33 CFR 156.170.

Air & Multipurpose

General Purpose

Heavy Duty

Push-on

Chemical Transfer

Cleaning Equipment

Food

Transfer

Washdown

Marine

Material Handling

Abrasives

Bulk Transfer

Cement & Concrete

Mining

Petroleum

Aircraft Fueling

Dispensing

Dock

Transfer

Spray

Steam

Vacuum

LPG Delivery

Water

Discharge

Suction & Discharge

Washdown

Welding

Coupling Systems

Equipment

Appendix

Vapor Recovery Dock



Product Specifications

Application

For use in the recovery of petroleum vapors during the transfer of petroleum-based products between docks and tankers or barges.

Construction Tube

Nitrile synthetic rubber for up to 50% aromatics. Also available with a Flosyn® tube for up to 100% aromatics.

Cover

Black Chemivic™ synthetic rubber (corrugated)

Reinforcement

Synthetic fabric plies plus two (2) wire helix

Temperature Range

-25°F to 200°F (-32°C to 93°C)

Packaging

Chloroplast heavy-duty packaging

Branding (Spiral)

Example: Continental ContiTech Vapor Recovery 25 psi MWP

Couplings

Built-in nipples (or swaged fittings up to 10" ID) fitted with 150# flange with extra 5/8" diameter hole located midway between flange bolt hole as per Coast Guard requirements.

Non-Stock/Sizes

Custom lengths available, contact Customer Service.

Order Codes

541-090 (Nitrile Tube)

541-643 (Flosyn® Tube)

Vapor Recovery Dock

SAP #	ID		Nom. OD		Max. WP		Bend Radius		Vacuum HG		Weight			
	Nitrile Tube	Flosyn Tube	in.	mm	in.	mm	psi	MPa	in.	mm	in.	mm	lb./ft.	kg/m
		20585185	6	152.4	6.86	174.2	25	0.17	22	559	29	737	5.70	8.48
20157291			8	203.2	8.89	225.8	25	0.17	30	762	29	737	8.26	12.29
20323233			10	254.0	10.97	278.6	25	0.17	40	1016	29	737	12.63	18.80
20014974			12	304.8	13.00	330.2	25	0.17	60	1524	29	737	15.07	22.43

Note: Factory coupled hose manufactured according to the code of Federal Regulations Standard 33 CFR 154.810 and 33 CFR 156.170.

Air & Multipurpose
General Purpose
Heavy Duty
Push-on

Chemical Transfer

Cleaning Equipment

Food
Transfer
Washdown

Marine

Material Handling
Abrasives
Bulk Transfer
Cement & Concrete

Mining

Petroleum
Aircraft Fueling
Dispensing
Dock
Transfer

Spray

Steam

Vacuum

LPG Delivery

Water
Discharge
Suction & Discharge
Washdown

Welding

Coupling Systems

Equipment

Appendix

Plicord® HW Dry Cement/Barytes



Product Specifications

Application

Heavy duty high performance suction and discharge hose for the bulk transfer of dry cement and barytes from supply vessels to off-shore platform and drilling rigs.

Construction Tube

Black, ChemiTuf® static conducting synthetic rubber

Cover

Black, SBR synthetic rubber with Yellow spiral stripe (Cement) and Orange stripe (Batytes) wrapped finish.

Reinforcement

Spiral-plied (4) synthetic fabric plus helix wire

Temperature Range

-32°F to 82°F (-25°C to 180°C)

Packaging

30.5m coils (available in other lengths up to 122m)

Branding (Spiral)

Example: Continental ContiTech Dry Cement Hardwall
Continental ContiTech Barytes Hardwall

Order Codes

549-275 (Cement)
549-070 (Barytes)

Plicord® HW Dry Cement/Barytes

ID	Nom. OD		Max. WP		Bend Radius	Weight		
	in.	mm	in.	mm		psi	bar	mm
4	102.3	4.84	121.0	150	10	1015	3.16	4.70
5	127.4	5.86	151.0	150	10	1270	5.41	8.04
6	152.6	6.85	176.4	150	10	1525	6.57	9.77

Hose safety factor (burst pressure) 4:1.

Air & Multipurpose

- General Purpose
- Heavy Duty
- Push-on

Chemical Transfer

Cleaning Equipment

Food

- Transfer
- Washdown

Marine

Material Handling

- Abrasives
- Bulk Transfer
- Cement & Concrete

Mining

Petroleum

- Aircraft Fueling
- Dispensing
- Dock Transfer

Spray

Steam

Vacuum

LPG Delivery

Water

- Discharge
- Suction & Discharge
- Washdown

Welding

Coupling Systems

Equipment

Appendix

Plicord® SW Dry Cement/Barytes



Product Specifications

Application

Heavy duty high performance discharge hose for the bulk transfer of dry cement and barites from supply vessels to off-shore platforms and drilling rigs.

Construction Tube

Black ChemiTuf static dissipation

Cover

Black SBR

Reinforcement

4 plies with static wire

Temperature Range

-32°F to 82°F (-25°C to 180°C)

Packaging

30.5m coils (available in other lengths up to max 122m)

Branding (Spiral)

Dry Cement Softwall by Continental ContiTech
Barytes Softwall by Continental ContiTech

Order Codes

549-274 (Cement)
549-278 (Barytes)

Plicord® SW Dry Cement/Barytes

ID		Nom. OD		Max. WP	Weight
in.	mm	in.	mm	psi	lb./ft.
3	76.0	3.83	97.4	150	2.44
4	101.6	4.85	123.2	150	3.22
5	127.0	5.88	149.4	150	4.13
6	152.4	6.93	176.0	150	5.24

Hose safety factor (burst pressure) 4:1.

Air & Multipurpose
General Purpose
Heavy Duty
Push-on

Chemical Transfer

Cleaning Equipment

Food
Transfer
Washdown

Marine

Material Handling
Abrasives
Bulk Transfer
Cement & Concrete

Mining

Petroleum
Aircraft Fueling
Dispensing
Dock
Transfer

Spray

Steam

Vacuum

LPG Delivery

Water
Discharge
Suction & Discharge
Washdown

Welding

Coupling Systems

Equipment

Appendix

Plicord® Dock Hose



Product Specifications

Application

For the transfer of petroleum products between docks and tankers and is rated for 250 working psi. Not intended for offshore or submarine applications.

Construction Tube

Nitrile synthetic rubber

Cover

1/4" Black SBR synthetic rubber

Reinforcement

Spiral wire helix between plies of synthetic fabric

Temperature Range

-25°F to 180°F (-32°C to 82°C)

Packaging

Heavy-duty plastic packaging

Branding (Impression)

Continental ContiTech Plicord Dock Oil Service, Nitrile 250 psi WP

Couplings

Coupled with galvanized built-in steel nipple/150#RFSSO flanges. Available in other bolt hole patterns, materials and floating flanges on request. Hose assembly is electrically continuous unless otherwise specified by customer.

Non-Stock/Sizes

Custom lengths available, contact Customer Service.

Order Codes

541-577

Plicord® Dock Hose

SAP #	ID	Nom. OD		Max. WP		Bend Radius		Weight		
		in.	mm	psi	MPa	in.	mm	lb./ft.	kg/m	
20015841	6	152.4	7.81	198.4	250	1.72	36	914	14.30	21.28
20108741	8	203.2	9.89	251.2	250	1.72	48	1219	20.05	29.84
20161600	10	254.0	12.07	306.6	250	1.72	60	1524	27.23	40.52
20264034	12	304.8	14.10	358.1	250	1.72	72	1829	31.93	47.52

Note: Factory coupled hose manufactured according to the code of Federal Regulations Standard 33 CFR 154.500 and 33 CFR 156.170.

Air & Multipurpose

General Purpose

Heavy Duty

Push-on

Chemical Transfer

Cleaning Equipment

Food

Transfer

Washdown

Marine

Material Handling

Abrasives

Bulk Transfer

Cement & Concrete

Mining

Petroleum

Aircraft Fueling

Dispensing

Dock

Transfer

Spray

Steam

Vacuum

LPG Delivery

Water

Discharge

Suction & Discharge

Washdown

Welding

Coupling Systems

Equipment

Appendix

Hot Tar & Asphalt



Product Specifications

Application

Designed for petroleum-based products up to 350°F between docks and tankers or barges under heavy-duty conditions.

Construction Tube

Nitrile synthetic rubber, flat steel wire helix supporting the tube

Cover

Wingprene® synthetic rubber

Reinforcement

Spiral-plied synthetic fabric with wire helix

Temperature Range

-25°F to 350°F (-32°C to 177°C)

Smooth Bore

Order Codes: 541-606

SAP #	ID		Nom. OD		Max. WP		Bend Radius		Vacuum HG		Weight	
	in.	mm	in.	mm	psi	MPa	in.	mm	in.	mm	lb./ft.	kg/m
20274024	4	101.6	5.28	134.1	225	1.55	36	914	29	737	6.48	9.64
20276576	6	152.4	7.72	196.1	225	1.55	48	1219	29	737	13.83	20.58
20266243	8	203.2	9.80	248.9	225	1.55	60	1524	29	737	19.11	28.44
20473949	10	254.0	11.80	299.7	225	1.55	80	2032	29	737	23.20	34.52

Rough Bore

Order Codes: 541-582

SAP #	ID		Nom. OD		Max. WP		Bend Radius		Vacuum HG		Weight	
	in.	mm	in.	mm	psi	MPa	in.	mm	in.	mm	lb./ft.	kg/m
20283225	6	152.4	8.19	208.0	225	1.55	36	914	29	737	16.19	24.09
20288374	8	203.2	10.25	260.4	225	1.55	48	1219	29	737	22.39	33.32
20015897	10	254.0	12.31	312.7	225	1.55	60	1524	29	737	29.09	43.29

Packaging

Custom lengths available, contact Customer Service.

Branding

Example: Continental ContiTech RB Dock hot asphalt, 350°F, 225 psi max

Couplings

Coupled with built-in steel nipple/150#RFSO flanges. Available in other bolt hole patterns, materials and floating flanges on request. Smooth bore assembly is electrically continuous unless otherwise specified by customer. Rough bore assembly is offered as electrically continuous only.

Non-Stock/Sizes

Custom lengths available, contact Customer Service.

Air & Multipurpose
General Purpose
Heavy Duty
Push-on

Chemical Transfer

Cleaning Equipment

Food
Transfer
Washdown

Marine

Material Handling
Abrasives
Bulk Transfer
Cement & Concrete

Mining

Petroleum
Aircraft Fueling
Dispensing
Dock
Transfer

Spray

Steam

Vacuum

LPG Delivery

Water
Discharge
Suction & Discharge
Washdown

Welding

Coupling Systems

Equipment

Appendix

Oil Rig Service Hose with Integral Positive Float System



Product Specifications

Application

Hose specifically designed to be used on service vessels to offshore drilling and production platforms for the transfer of a wide range of products from petroleum to drinking water. The unique positive float system allows the hose to maintain flotation with products of various specific gravities.

The system consists of a section of floating hose up to a length of 30.5m which may be attached to various lengths of hose (up to 120m) attached to the supply vessel. In addition the supply hose may incorporate intergrated wear strips on the cover to improve the abrasion resistance of the hose. The system may be stored on platform reeling systems and the hoses may be supplied with a RFID chip for intergrated hose management.

Construction Tube

Various synthetic rubber compounds are offered depending on hose service and product conveyed

Cover

Synthetic rubber with excellent resistance to ozone and weathering. An abrasion strip is available to extend the service life of the outer hose

Reinforcement

Spiral reinforcement plies available with (Hardwall) or without (Softwall) helix wire

Positive float

Well proven closed cell foam floating material used also in OCIMF hoses. Foam thickness design based upon product conveyed as specified by the customer. The foam is covered with an integral orange rubber cover.

Approvals

Currently in use in the North Sea with major oil and drilling companies.

Branding

Standard ContiTech brand

Temperature

-22°F to 180°F (-30°C to 82°C)

Lengths

Custom built, up to 30.5m (100ft) with floatation and 120m (400ft.) without

Colors

Available in orange or black

Couplings

A range of internally and external swaged fittings and "built in" fittings are available for these hoses

Packaging

Bulk and coupled assemblies available

Dimensions

See below. Other diameter/design available upon request.

Air & Multipurpose

General Purpose

Heavy Duty

Push-on

Chemical Transfer

Cleaning Equipment

Food

Transfer

Washdown

Marine

Material Handling

Abrasives

Bulk Transfer

Cement & Concrete

Mining

Petroleum

Aircraft Fueling

Dispensing

Dock

Transfer

Spray

Steam

Vacuum

LPG Delivery

Water

Discharge

Suction & Discharge

Washdown

Welding

Coupling Systems

Equipment

Appendix

3" Positive Float

ID	Max. WP					Max SG*	
	in.	mm	mm	psi	bar	mm	kg/m
2	51	220	290	20	510	8.35	8.00
3	76	240	290	20	760	9.90	4.20
4	102	270	290	20	1020	11.63	3.10

1½" Positive Float

ID	Max. WP					Max SG*	
	in.	mm	mm	psi	bar	mm	kg/m
2	51	140	290	20	510	3.5	3.10
3	76	160	290	20	760	4.39	1.90
4	102	190	290	20	1020	5.37	1.60

Hose safety factor (burst pressure) 3:1. *Floating hose OD's are based on 3" and 1½" floatation material and Rig Supply Softwall Hose

*For vacuum service Rig Supply Hardwall is utilised *Max SG - Maximum Specific Gravity of the product allowed to have a Reserved Buoyancy of Min +25%

Air & Multipurpose
General Purpose
Heavy Duty
Push-on

Chemical Transfer

Cleaning Equipment

Food
Transfer
Washdown

Marine

Material Handling
Abrasives
Bulk Transfer
Cement & Concrete

Mining

Petroleum
Aircraft Fueling
Dispensing
Dock
Transfer

Spray

Steam

Vacuum

LPG Delivery

Water
Discharge
Suction & Discharge
Washdown

Welding

Coupling Systems

Equipment

Appendix

RB Dock Asphalt & Bitumen EN 13482



Product Specifications

Application

Rough Bore (RB) Dock hose, designed for asphalt and bitumen products up to 200°C (392°F) dockside transfer between docks and ships, all sizes rated at full vacuum.

Construction Tube

Black, oil resistant Chemigum® (Nitrile) synthetic rubber, supported by a flat steel helix wire

Cover

Black, ozone, oil, sea water and abrasion resistant Nitrilesynthetic rubber

Reinforcement

Spiral wire helix between plies of synthetic fabric

Temperature Range

-37°F to 200°F (-30°C to 392°C)

Branding (Spiral)

Coast Guard & Stainless steel name plate at both ends:
Example: Continental ContiTech Asphalt and Bitumen EN 13482:2001 Type 2, RB, ID mm, 15 bar, 200°C

Couplings

Built-in couplings with flanges supplies to customer requirements

Standards

ISO 1307
BS EN 13482 Type 2, Class B
Coast Guard Federal Regulations, Title 33, Chapter 1, Subpart C clause 154.500

Product Code

Built to length. Please contact our marketing department for further details.

RB Dock Asphalt & Bitumen EN 13482

ID	Nom OD		Max. WP		Bend Radius	Weight
	in.	mm	bar	MPa		
6	152.4	208.0	15	225	1015	19790
8	203.2	253.2	15	225	1270	27680
10	254.0	304.8	15	225	1525	33630

Hose safety factor (burst pressure) 6:1. Vacuum resistance up to -0.9 bar.

Air & Multipurpose

- General Purpose
- Heavy Duty
- Push-on

Chemical Transfer

Cleaning Equipment

- Food**
- Transfer
- Washdown

Marine

Material Handling

- Abrasives
- Bulk Transfer
- Cement & Concrete

Mining

Petroleum

- Aircraft Fueling
- Dispensing
- Dock
- Transfer

Spray

Steam

Vacuum

LPG Delivery

Water

- Discharge
- Suction & Discharge
- Washdown

Welding

Coupling Systems

Equipment

Appendix

SB Dock Asphalt & Bitumen EN 13482



Product Specifications

Application

Rough Bore (RB) Dock hose, designed for asphalt and bitumen products up to 200°C (392°F) dockside transfer between docks and ships, all sizes rated at full vacuum.

Construction Tube

Black, oil resistant Chemigum® (Nitrile) synthetic rubber, supported by a flat steel helix wire

Cover

Black, ozone, oil, sea water and abrasion resistant Nitrilesynthetic rubber

Reinforcement

Spiral wire helix between plies of synthetic fabric

Temperature Range

-37°F to 200°F (-30°C to 392°C)

Branding (Spiral)

Coast Guard & Stainless steel name plate at both ends: Example: Continental ContiTech Asphalt and Bitumen EN 13482:2001 Type 2, RB, ID mm, 15 bar, 200°C

Couplings

Built-in couplings with flanges supplies to customer requirements

Standards

ISO 1307
BS EN 13482 Type 2, Class B
Coast Guard Federal Regulations, Title 33, Chapter 1, Subpart C clause 154.500

Product Code

Built to length. Please contact our marketing department for further details.

Order Code

541-240

RB Dock Asphalt & Bitumen EN 13482

ID		Nom OD		Max. WP		Bend Radius	Weight
in.	mm	mm	bar	MPa	mm	g/m	
4	101.6	134.9	15	225	605	9520	
6	152.4	208.0	15	225	825	19790	
8	203.2	253.2	15	225	1120	27680	
10	254.0	304.8	15	225	1395	33630	

Hose safety factor (burst pressure) 6:1. Vacuum resistance up to -0.9 bar.

Air & Multipurpose
General Purpose
Heavy Duty
Push-on

Chemical Transfer

Cleaning Equipment

Food
Transfer
Washdown

Marine

Material Handling
Abrasives
Bulk Transfer
Cement & Concrete

Mining

Petroleum
Aircraft Fueling
Dispensing
Dock
Transfer

Spray

Steam

Vacuum

LPG Delivery

Water
Discharge
Suction & Discharge
Washdown

Welding

Coupling Systems

Equipment

Appendix

Transfer



Air & Multipurpose
 General Purpose
 Heavy Duty
 Push-on

Chemical Transfer

Cleaning Equipment

Food
 Transfer
 Washdown

Marine

Material Handling
 Abrasives
 Bulk Transfer
 Cement & Concrete

Mining

Petroleum
 Aircraft Fueling
 Dispensing
 Dock
 Transfer

Spray

Steam

Vacuum

LPG Delivery

Water
 Discharge
 Suction & Discharge
 Washdown

Welding

Coupling Systems

Equipment

Appendix

	Page	Temp. Range	Refined Fuels	Corrugated Cover	Lightweight
Arctic ExtremeFlex	196	-65°F to 180°F (-54°C to 82°C)	Yes	Yes	Yes
Blue Low Temp Fuel Oil Delivery	194	-40°F to 140°F (-40°C to 60°C)	Yes		
Flexwing VersaFuel	197	-30°F to 180°F (-35°C to 82°C)	Yes		
Infinity Fuel Drop Hose	198	-40°F to 160°F (-40°C to 71°C)	Yes	Yes	Yes
Infinity HD Fuel Drop Hose	199	-40°F to 160°F (-40°C to 71°C)	Yes	Yes	Yes
LW Arctic Tank Truck	208	-65°F to 180°F (-54°C to 82°C)		Yes	Yes
Paladin	201	-40°F to 160°F (-40°C to 71°C)	Yes	Yes	Yes
Plicord Arctic Flexwing	209	-65°F to 180°F (-54°C to 82°C)	Yes		
Plicord ExtremeFlex	211	-40°F to 200°F (-40°C to 93°C)	Yes	Yes	Yes
Plicord Flexwing Petroleum	200	-35°F to 200°F (-37°C to 93°C)	Yes		
Plicord Fuel Discharge	210	-35°F to 180°F (-37°C to 82°C)	Yes		
Plicord LW Black Flextra II	205	-40°F to 180°F (-40°C to 82°C)	Yes	Yes	Yes
Plicord Oilfield Frac	204	-25°F to 180°F (-32°C to 82°C)			
Plicord Super Black Flexwing	203	-35°F to 200°F (-37°C to 93°C)	Yes		
Prospector Oilfield 150	206	-25°F to 180°F (-32°C to 82°C)			
Prospector Oilfield 300	207	-35°F to 180°F (-37°C to 82°C)			
Pyroflex Hot Tar & Asphalt II	213	-25°F to 350°F (-32°C to 177°C)			
Pyroflex Hot Tar Wand	214	-25°F to 350°F (-32°C to 177°C)			
Redwing Fuel Oil	195	-40°F to 140°F (-40°C to 60°C)	Yes		
Red Flextra 100 & 150	202	-30°F to 180°F (-34°C to 82°C)			
Spiraflex Polyurethane Vapor Recovery	212	-30°F to 150°F (-35°C to 66°C)		Yes	Yes

Blue Low Temp Fuel Oil Delivery



Product Specifications

Application

The new and improved Low Temperature Fuel Oil Delivery Hose is for transfer and delivery of fuel oil and petroleum products for home delivery, commercial, and industrial service designed to remain flexible in cold temperatures and provide superior oil resistance. The braided construction reduces kinking and twisting when reeling. The smooth cover has low drag resistance.

Construction Tube

Nitrile (ORS)

Cover

Blue Chemivic™ Synthetic Rubber (ORS) (Smooth Finish)

Reinforcement

Two Braid Textile with Static Wire

Temperature Range

-40°F to 140°F (-40°C to 60°C)

Packaging

Cut Lengths

Branding (Spiral)

Example: 1¼" (31.75) Continental ContiTech Low Temp Fuel Oil A/S. Made in U.S.A.

Order Codes

532-021

Blue Low Temp Fuel Oil Delivery

SAP #	Color	ID/in.	ID/mm	Length	Stocked	psi	Weight	Product Code
20054898	Blue	1¼	31.75	100'	YES	250	.65 / FT	53202104010000
20031895	Blue	1¼	31.75	125'	YES	250	.65 / FT	53202104012500
20031896	Blue	1¼	31.75	150'	YES	250	.65 / FT	53202104015000
20054428	Blue	1¼	31.75	175'	N/S	250	.65 / FT	53202104017500
20031897	Blue	1⅜	34.92	125'	YES	250	.70 / FT	53202104412500
20031898	Blue	1⅜	34.92	150'	YES	250	.70 / FT	53202104415000
20145510	Blue	1⅜	34.92	175'	N/S	250	.70 / FT	53202104417500
20750636	Blue	1½	38.10	100'	2500'	250	.92 / FT	53202104810000
20046244	Blue	1½	38.10	125'	2500'	250	.92 / FT	53202104812500
20031899	Blue	1½	38.10	150'	2500'	250	.92 / FT	53202104815000
20750635	Blue	1½	38.10	175'	2500'	250	.92 / FT	53202104817500

Air & Multipurpose
General Purpose
Heavy Duty
Push-on

Chemical Transfer

Cleaning Equipment

Food
Transfer
Washdown

Marine

Material Handling
Abrasives
Bulk Transfer
Cement & Concrete

Mining

Petroleum
Aircraft Fueling
Dispensing
Dock
Transfer

Spray

Steam

Vacuum

LPG Delivery

Water
Discharge
Suction & Discharge
Washdown

Welding

Coupling Systems

Equipment

Appendix

Redwing® Fuel Oil



Product Specifications

Application

Redwing® Fuel Oil is for transfer and delivery of fuel oil and petroleum products for home delivery, commercial and industrial service. Redwing Fuel Oil has two textile braids. The braided construction reduces kinking and twisting when reeling. The smooth cover has low drag resistance.

Construction Tube

Nitrile synthetic rubber (ORS)

Cover

Red Chemivic™ synthetic rubber (smooth finish) (ORS)

Reinforcement

Braided (2) synthetic yarn

Temperature Range

-40°F to 140°F (-40°C to 60°C)

Packaging

Reels, cut lengths, and coupled lengths

Branding

Example: 1" (25.4mm) 2 BD Redwing® Fuel Oil Continental ContiTech Made in U.S.A.

Couplings

Contact fitting manufacturer for proper fitting recommendation and coupling procedure.

Order Codes

532-016

Redwing® Fuel Oil

SAP #	ID		Nom. OD		Max. WP		Weight	
	in.	mm	in.	mm	psi	MPa	lb./ft.	kg/m
20021667	1	25.4	1.50	38.1	250	1.72	0.57	0.85
20021681	1¼	31.8	1.80	45.7	250	1.72	0.65	0.97
20021708	1¾	34.9	1.88	47.8	250	1.72	0.70	1.04
20021735	1½	38.1	2.10	53.3	150	1.03	0.92	1.37

Air & Multipurpose

General Purpose

Heavy Duty

Push-on

Chemical Transfer

Cleaning Equipment

Food

Transfer

Washdown

Marine

Material Handling

Abrasives

Bulk Transfer

Cement & Concrete

Mining

Petroleum

Aircraft Fueling

Dispensing

Dock

Transfer

Spray

Steam

Vacuum

LPG Delivery

Water

Discharge

Suction & Discharge

Washdown

Welding

Coupling Systems

Equipment

Appendix

Arctic ExtremeFlex™

A New Degree of Flexibility



Product Specifications

Application

An extremely flexible and lightweight drop hose for transfer of petroleum-based products under suction, low-pressure discharge or gravity flow. Flexibility maintained down to -65°F (-54°C).

Construction Tube

Black Nitrile, RMA Class A (High Oil Resistance)

Cover

Corrugated Black Wingprene® synthetic rubber (wrapped impression), blue spiral stripe
 Corrugated Blue Wingprene® synthetic rubber (wrapped impression), red spiral stripe

Reinforcement

Spiral-plied synthetic fabric with double wire helix

Temperature Range

-65°F to 180°F (-54°C to 82°C)

Packaging

Coiled and polywrapped

Branding (Spiral)

Example: Continental ContiTech Plicord® Arctic ExtremeFlex™ Petroleum Transfer 150 psi WP

Couplings

Use Continental ContiTech Insta-Lock™ Cam & Groove Fittings

Non-Stock/Sizes

400' minimum order

Non-Stock/Sizes

543-807 (black)
 543-451 (blue)

Arctic ExtremeFlex™

SAP #		ID		Nom. OD		Max. WP		Bend Radius		Vacuum HG		Weight	
Black	Blue	in.	mm	in.	mm	psi	MPa	in.	mm	in.	mm	lb./ft.	kg/m
20476228	20484433	2	51	2.5	63.5	150	1.03	2	51	29	737	1.08	1.61
20476229	20484435	3	76	3.48	88.5	150	1.03	3	76	29	737	1.62	2.41
20476250	20484436	4	102	4.55	115.7	150	1.03	4	102	29	737	2.35	3.50



Air & Multipurpose
 General Purpose
 Heavy Duty
 Push-on

Chemical Transfer

Cleaning Equipment

Food
 Transfer
 Washdown

Marine

Material Handling
 Abrasives
 Bulk Transfer
 Cement & Concrete

Mining

Petroleum
 Aircraft Fueling
 Dispensing
 Dock
 Transfer

Spray

Steam

Vacuum

LPG Delivery

Water
 Discharge
 Suction & Discharge
 Washdown

Welding

Coupling Systems

Equipment

Appendix

Flexwing VersaFuel™



Product Specifications

Application

For use in tank truck and in-plant operation to transfer diesel, biodiesel blends, B-100, ethanol blends, gasoline, oil and petroleum base products up to 60% aromatic content.

Construction Tube

Synthetic rubber (static dissipating)

Cover

Black synthetic rubber with excellent resistance to biodiesel, ethanol, oil/petroleum products and abrasion.

Reinforcement

Spiral-plied synthetic fabric with helix wire

Temperature Range

-30°F to 180°F (-34°C to 82°C)

Packaging

100' lengths, coiled and polywrapped.

Branding (Spiral)

Example: Continental ContiTech Flexwing VersaFuel™ 150 psi WP

Couplings

Use Continental ContiTech Insta-Lock™ Cam and Groove fittings with this product.

Non-Stock/Sizes

400' minimum order

Order Codes

543-422

Flexwing VersaFuel™

SAP #	ID	Nom. OD		Max. WP		Bend Radius		Vacuum HG		Weight		
		in.	mm	in.	mm	in.	mm	in.	mm	lb./ft.	kg/m	
20339606	1	25.4	1.50	38.1	150	1.03	2	50	29	737	0.59	0.88
20339625	1¼	32.0	1.77	44.8	150	1.03	3	75	29	737	0.74	1.10
20339626	1½	38.0	2.03	51.7	150	1.03	4	100	29	737	0.92	1.37
20339628	2	51.2	2.55	64.9	150	1.03	5	125	29	737	1.21	1.80
20339627	2½	63.7	3.07	77.9	150	1.03	6	150	29	737	1.56	2.32
20339629	3	76.1	3.58	91.0	150	1.03	7	175	29	737	1.94	2.89
20339650	4	102.1	4.60	117.0	150	1.03	10	200	29	737	2.53	3.77

Air & Multipurpose

General Purpose
Heavy Duty
Push-on

Chemical Transfer

Cleaning Equipment

Food
Transfer
Washdown

Marine

Material Handling
Abrasives
Bulk Transfer
Cement & Concrete

Mining

Petroleum
Aircraft Fueling
Dispensing
Dock
Transfer

Spray

Steam

Vacuum

LPG Delivery

Water
Discharge
Suction & Discharge
Washdown

Welding

Coupling Systems

Equipment

Appendix

Infinity™ Fuel Drop Hose



Product Specifications

Application

Constructed with the exclusive PVC double helix for superior flexibility, abrasion resistance and low coefficient of friction for ease of maneuverability. Lightweight in construction, it is designed to transfer biodiesel and ethanol blends, gasoline and other petroleum products under pressure, gravity flow or medium suction (up to 23" Hg) at ambient temperature and with an aromatic content of 60% or less.

Construction Tube

Black Nitrile synthetic rubber (static dissipating)

Cover

Black Chemivic™ synthetic rubber with orange & green Pliovic® outer helix

Reinforcement

Synthetic fabric plies with static wire

Temperature Range

-40°F to 160°F (-40°C to 71°C)

Packaging

Coiled and polywrapped. For cut length, check with your Continental ContiTech distributors.

Branding

Example: Infinity™ Drop Hose Continental ContiTech

Couplings

Use Continental ContiTech Insta-Lock™ Cam & Groove Fittings with this product.

Order Codes

543-773

Infinity™

SAP #	ID		Nom. OD		Max. WP		Bend Radius		Vacuum HG		Weight	
	in.	mm	in.	mm	psi	MPa	in.	mm	in.	mm	lb./ft.	kg/m
20414700	2	51.0	2.80	70.50	150	1.03	1.5	1.02	23	584	1.02	1.52
20414701	3	76.0	3.80	95.48	100	0.69	2.0	1.46	23	584	1.46	2.18
20414702	4	102.0	4.80	121.47	75	0.52	2.5	1.73	23	584	1.73	2.57

Air & Multipurpose
General Purpose
Heavy Duty
Push-on

Chemical Transfer

Cleaning Equipment

Food
Transfer
Washdown

Marine

Material Handling
Abrasives
Bulk Transfer
Cement & Concrete

Mining

Petroleum
Aircraft Fueling
Dispensing
Dock
Transfer

Spray

Steam

Vacuum

LPG Delivery

Water
Discharge
Suction & Discharge
Washdown

Welding

Coupling Systems

Equipment

Appendix

Infinity™ HD Fuel Drop Hose



Product Specifications

Application

Constructed with the exclusive PVC double helix for superior flexibility, abrasion resistance and low coefficient of friction for ease of maneuverability. Lightweight in construction, Infinity™ HD (Heavy Duty) is designed for higher working pressure applications (150 psi). It is suitable in gravity flow or medium suction at ambient temperature. Designed to transfer biodiesel and ethanol blends, gasoline and other petroleum products with an aromatic content of 60% or less.

Construction Tube

Black Nitrile synthetic rubber (static dissipating)

Cover

Synthetic fabric plies

Reinforcement

Black Chemivic™ synthetic rubber with double Orange Pliovic® outer helix

Temperature Range

-40°F to 160°F (-40°C to 71°C)

Packaging

Coiled and polywrapped. For cut length, check with your Continental ContiTech Authorized Distributor.

Branding

Infinity™ HD Drop Hose 150psi Continental ContiTech

Couplings

Use Continental ContiTech Insta-Lock™ Cam & Groove Fittings with this product. See the Coupling Systems information pages at the back of the catalog.

Order Codes

543-138

Infinity™ HD Fuel Drop Hose

SAP #	ID		Nom. OD		Max. WP		Bend Radius		Vacuum HG		Weight	
	in.	mm	in.	mm	psi	MPa	in.	mm	in.	mm	lb./ft.	kg/m
20439969	2	51.0	2.80	70.50	150	1.03	1.5	38.1	23	584	1.01	1.51
20439980	3	76.0	3.80	95.90	150	1.03	2.0	50.8	23	584	1.48	2.21
20439981	4	102.0	4.80	122.50	150	1.03	3.0	76.2	23	584	2.01	2.99

Air & Multipurpose

- General Purpose
- Heavy Duty
- Push-on

Chemical Transfer

Cleaning Equipment

Food

- Transfer
- Washdown

Marine

Material Handling

- Abrasives
- Bulk Transfer
- Cement & Concrete

Mining

Petroleum

- Aircraft Fueling
- Dispensing
- Dock Transfer

Spray

Steam

Vacuum

LPG Delivery

Water

- Discharge
- Suction & Discharge
- Washdown

Welding

Coupling Systems

Equipment

Appendix

Plicord® Flexwing® Petroleum



Product Specifications

Application

For use in tank truck and in-plant operations to transfer gasoline, oil, ethanol blends and other petroleum base products up to 50% aromatic content. It is designed for pressure, gravity flow, or full-suction service.

Construction Tube

Nitrile synthetic rubber RMA Class A (High Oil Resistance)

Cover

Black (red spiral stripe) or Red Chemivic™ (white spiral stripe) synthetic rubber (oil resistant); smooth cover; wrapped finish

Reinforcement

Spiral-plied synthetic fabric with wire helix

Temperature Range

-35°F to 200°F (-37°C to 93°C)

Packaging

100' lengths, coiled and polywrapped

Branding (Spiral)

Example: Continental ContiTech Flexwing® Petroleum 150 psi WP

Couplings

Use Continental ContiTech Insta-Lock™ Cam & Groove Fittings with this product. See the Coupling Systems information pages at the back of the catalog.

Order Codes

543-109 (black)
543-110 (red)
541-109 (black 8-inch size)

Plicord® Flexwing® Petroleum

SAP #		ID		Nom. OD		Max. WP		Bend Radius		Vacuum HG		Weight	
Black	Red	in.	mm	in.	mm	psi	MPa	in.	mm	in.	mm	lb./ft.	kg/m
20050548		3/4	19.1	1.22	31.0	150	1.03	2	51	29	737	0.47	0.70
20017481	20392618	1	25.4	1.50	38.1	150	1.03	2	51	29	737	0.63	0.94
20017482	20017530	1¼	31.8	1.76	44.7	150	1.03	3	76	29	737	0.79	1.18
20017488	20017532	1½	38.1	2.03	51.6	150	1.03	4	102	29	737	0.99	1.47
20050549		1¾	44.5	2.28	57.9	150	1.03	4	102	29	737	1.07	1.59
20017496	20017537	2	50.8	2.55	64.8	150	1.03	5	114	29	737	1.30	1.93
20017502	20017541	2½	63.5	3.07	78.0	150	1.03	6	146	29	737	1.66	2.47
20017508	20017543	3	76.2	3.57	90.7	150	1.03	7	178	29	737	2.03	3.02
20017513		3½	88.9	4.13	104.9	150	1.03	8	203	29	737	2.39	3.56
20017516		4	101.6	4.60	116.8	150	1.03	10	254	29	737	2.68	3.99
20017526	20017546	6	152.7	6.78	171.9	150	1.03	30	762	29	737	5.61	8.36
20620375		8	203.2	8.98	228.0	150	1.03	40	1016	29	737	9.90	14.73

Air & Multipurpose
General Purpose
Heavy Duty
Push-on

Chemical Transfer

Cleaning Equipment

Food
Transfer
Washdown

Marine

Material Handling
Abrasives
Bulk Transfer
Cement & Concrete

Mining

Petroleum
Aircraft Fueling
Dispensing
Dock
Transfer

Spray

Steam

Vacuum

LPG Delivery

Water
Discharge
Suction & Discharge
Washdown

Welding

Coupling Systems

Equipment

Appendix

Paladin®



Product Specifications

Application

Designed as a lightweight and flexible hose to transfer biodiesel and ethanol blends, gasoline and other petroleum products under pressure, gravity flow or medium suction (up to 23" Hg) at ambient temperature. Maximum aromatic content 60%. Outer PVC helix provides abrasion resistance and low coefficient of friction. With Antistatic wire (low resistance).

Construction Tube

Black Nitrile synthetic rubber (static dissipating)

Cover

Black Chemivic™ synthetic rubber with double Orange Pliovic® outer helix

Reinforcement

Synthetic fabric plies

Temperature Range

-40°F to 160°F (-40°C to 71°C)

Packaging

100' lengths, coiled and bagel pack

Branding

Example: Continental ContiTech Paladin® Drop Hose (Date Code). Made in Canada

Couplings

Use Continental ContiTech Insta-Lock™ Cam & Groove Fittings with this product. See the Coupling Systems information pages at the back of the catalog.

Order Codes

543-227

Paladin®

SAP #	ID		Nom. OD		Max. WP		Bend Radius		Vacuum HG		Weight	
	in.	mm	in.	mm	psi	MPa	in.	mm	in.	mm	lb./ft.	kg/m
20130856	2	50.8	2.87	72.9	150	1.03	2	51	23	584	1.04	1.55
20130857	3	76.2	3.92	99.6	150	1.03	3	76	23	584	1.58	2.35
20131000	4	101.6	4.85	123.2	75	0.52	5	127	23	584	1.94	2.89

Air & Multipurpose

General Purpose

Heavy Duty

Push-on

Chemical Transfer

Cleaning Equipment

Food

Transfer

Washdown

Marine

Material Handling

Abrasives

Bulk Transfer

Cement & Concrete

Mining

Petroleum

Aircraft Fueling

Dispensing

Dock

Transfer

Spray

Steam

Vacuum

LPG Delivery

Water

Discharge

Suction & Discharge

Washdown

Welding

Coupling Systems

Equipment

Appendix

Red Flextra®



Product Specifications

Application

For the transfer of ethanol blends, gasoline and other petroleum-based products under pressure, gravity flow or full-suction where maximum flexibility is needed.

Construction Tube

Nitrile synthetic rubber RMA Class A (High Oil Resistance)

Cover

Red Wingprene®, corrugated synthetic rubber RMA Class C (Oil Resistance)

Reinforcement

Spiral-plied synthetic fabric with double wire helix

Temperature Range

-30°F to 180°F (-34°C to 82°C)

Red Flextra® 100

Order Codes: 543-123

SAP #	ID		Nom. OD		Max. WP		Bend Radius		Vacuum HG		Weight	
	in.	mm	in.	mm	psi	MPa	in.	mm	in.	mm	lb./ft.	kg/m
20017589	2	50.8	2.38	60.3	100	0.69	4	102	29	737	0.83	1.09
20017593	2½	63.5	2.88	73.2	100	0.69	5	127	29	737	1.09	1.62
20017598	3	76.2	3.41	86.6	100	0.69	6	152	29	737	1.41	2.10
20017600	4	101.6	4.53	115.1	100	0.69	9	229	29	737	2.23	3.32

Red Flextra® 150

Order Codes: 543-120

SAP #	ID		Nom. OD		Max. WP		Bend Radius		Vacuum HG		Weight	
	in.	mm	in.	mm	psi	MPa	in.	mm	in.	mm	lb./ft.	kg/m
20017582	2	50.8	2.52	64.0	150	1.03	4	102	29	737	1.18	1.76
20017583	3	76.2	3.59	91.2	150	1.03	6	152	29	737	1.99	2.96
20017584	4	101.6	4.61	117.1	150	1.03	9	229	29	737	2.66	3.96

Packaging

100' lengths, coiled and polywrapped

Branding (Spiral)

Example: Continental ContiTech Red Flextra®. Made in Canada

Couplings

Use Continental ContiTech Insta-Lock Cam & Groove Fittings with this product. See the Coupling Systems information pages at the back of the catalog.

Air & Multipurpose
General Purpose
Heavy Duty
Push-on

Chemical Transfer

Cleaning Equipment

Food
Transfer
Washdown

Marine

Material Handling
Abrasives
Bulk Transfer
Cement & Concrete

Mining

Petroleum
Aircraft Fueling
Dispensing
Dock
Transfer

Spray

Steam

Vacuum

LPG Delivery

Water
Discharge
Suction & Discharge
Washdown

Welding

Coupling Systems

Equipment

Appendix

Plicord® Super Black Flexwing®



Product Specifications

Application

A premium high-pressure petroleum transfer hose for handling ethanol blends, gasoline, oils and other petroleum products at higher working pressures.

Construction Tube

Special fuel-resistant Black nitrile synthetic rubber RMA Class A (High Oil Resistance)

Cover

Black Neoprene synthetic rubber RMA Class A (High Oil Resistance), wrapped finish.

Reinforcement

Spiral-plied synthetic fabric with wire helix

Temperature Range

-35°F to 200°F (-37°C to 93°C)

Packaging

100' lengths, coiled and polywrapped

Branding

Example: Continental ContiTech Flexwing® Petroleum Hose

Couplings

Use Continental ContiTech Insta-Lock™ Cam & Groove Fittings with this product. See the Coupling Systems information pages at the back of the catalog.

Order Codes

543-117
541-117 (6" diameter, 100' length)

Plicord Super Black Flexwing®

SAP #	ID		Nom. OD		Max. WP		Bend Radius		Vacuum HG		Weight		
	Black	in.	mm	in.	mm	psi	MPa	in.	mm	in.	mm	lb./ft.	kg/m
20472912	¾		19.1	1.28	32.5	300	2.07	2	51	29	737	0.57	0.85
20472913	1		25.4	1.53	38.9	300	2.07	3	75	29	737	0.70	1.04
20155914	1¼		31.8	1.87	47.1	300	2.07	4	100	29	737	.99	1.48
20017550	1½		38.1	2.08	52.8	300	2.07	4	100	29	737	1.15	1.71
20017552	2		50.8	2.59	65.8	300	2.07	5	125	29	737	1.44	2.14
20017558	2½		63.5	3.11	79.0	300	2.07	6	150	29	737	1.84	2.74
20017560	3		76.2	3.65	92.7	300	2.07	7	175	29	737	2.39	3.56
20017564	4		101.6	4.83	122.7	300	2.07	10	254	29	737	3.76	5.60
20017568	5		127.0	5.87	149.0	300	2.07	20	500	29	737	5.10	7.60
20338990	6		152.4	7.21	183.3	300	2.07	24	600	29	737	8.46	12.60

Air & Multipurpose

General Purpose

Heavy Duty

Push-on

Chemical Transfer

Cleaning Equipment

Food

Transfer

Washdown

Marine

Material Handling

Abrasives

Bulk Transfer

Cement & Concrete

Mining

Petroleum

Aircraft Fueling

Dispensing

Dock

Transfer

Spray

Steam

Vacuum

LPG Delivery

Water

Discharge

Suction & Discharge

Washdown

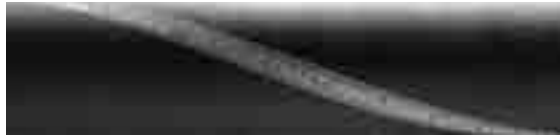
Welding

Coupling Systems

Equipment

Appendix

Plicord® Oilfield Frac



Product Specifications

Application

A rugged and flexible hose designed to convey crude oil and oil slurry mixtures for Frac tank connections.

Construction Tube

Black Nitrile

Cover

Black Chemivic™, smooth cover with wrapped finish. Also available with ARC treatment for improved abrasion resistance.

Reinforcement

Multiple plies of synthetic fabric

Temperature Range

-25°F to 180°F (-32°C to 82°C)

Plicord® Oilfield Frac

SAP #	ID	Nom. OD		Max. WP		Weight		
		in.	mm	in.	mm	lb./ft.	kg/m	
20118130	3	76.2	3.87	98.30	400	2.76	2.52	3.74
20018362	4	101.6	4.76	120.85	400	2.76	2.85	4.21

Packaging

100' length, coiled and polywrapped

Branding (Spiral)

Continental ContiTech Oilfield Fracturing Hose

Couplings

Contact fitting supplier

Order Codes

543-827
543-710 (ARC Treatment)
541-710

Air & Multipurpose
General Purpose
Heavy Duty
Push-on

Chemical Transfer

Cleaning Equipment

Food
Transfer
Washdown

Marine

Material Handling
Abrasives
Bulk Transfer
Cement & Concrete

Mining

Petroleum
Aircraft Fueling
Dispensing
Dock
Transfer

Spray

Steam

Vacuum

LPG Delivery

Water
Discharge
Suction & Discharge
Washdown

Welding

Coupling Systems

Equipment

Appendix

Plicord® LW Black Flextra II™



Product Specifications

Application

Used by tank trucks, bulk petroleum stations, and others to transfer ethanol blends and petroleum products under pressure, suction and/or gravity flow. Extremely flexible and lightweight to provide excellent service. Not recommended where aromatic content exceeds 50%.

Construction Tube

Black Nitrile RMA Class A (High Oil Resistance)

Cover

Black Chemivic™ (corrugated)

Reinforcement

Spiral-plied synthetic fabric with double wire helix

Temperature Range

-40°F to 180°F (-40°C to 82°C)

Packaging

100' lengths, coiled and polywrapped

Branding (Spiral)

Example: Continental ContiTech LW Black Flextra II™ 75 psi Max WP

Couplings

Contact fitting manufacturer for proper fitting recommendation and coupling procedure.

Order Codes

543-562

Plicord® LW Black Flextra II™

SAP #	ID		Nom. OD		Max. WP		Bend Radius		Vacuum HG		Weight	
	in.	mm	in.	mm	psi	MPa	in.	mm	in.	mm	lb./ft.	kg/m
20017959	2	50.8	2.42	61.5	75	0.52	3	76	29	737	0.94	1.40
20017961	2½	63.5	2.92	74.2	75	0.52	4	102	29	737	1.22	1.82
20017962	3	76.2	3.40	86.4	75	0.52	4	102	29	737	1.39	2.07
20017965	4	101.6	4.53	115.1	75	0.52	7	178	29	737	2.37	3.53

Air & Multipurpose

General Purpose

Heavy Duty

Push-on

Chemical Transfer

Cleaning Equipment

Food

Transfer

Washdown

Marine

Material Handling

Abrasives

Bulk Transfer

Cement & Concrete

Mining

Petroleum

Aircraft Fueling

Dispensing

Dock

Transfer

Spray

Steam

Vacuum

LPG Delivery

Water

Discharge

Suction & Discharge

Washdown

Welding

Coupling Systems

Equipment

Appendix

Prospector™ Oilfield 150



Product Specifications

Application

For use in transfer hose service, cleaning sediment from oil storage tanks and other general service applications. The tube is an oil-resistant synthetic rubber. Do not use with gasoline and other refined products when aromatic content exceeds 35%.

Construction Tube

Synthetic rubber

Cover

Black SBR synthetic rubber (smooth cover)

Reinforcement

Spiral-plied synthetic fabric with wire helix

Temperature Range

-25°F to 180°F (-32°C to 82°C)

Packaging

100' lengths, coiled and polywrapped

Branding (Spiral)

Example: Continental ContiTech Prospector™ Oilfield 150

Couplings

Use Continental ContiTech Insta-Lock Cam & Groove Fittings with this product. See the Coupling Systems information pages at the back of the catalog.

Order Codes

543-456 (1")
543-655 (1 ¼" - 6")

Prospector™ Oilfield 150

SAP #	ID	Nom. OD		Max. WP		Bend Radius		Vacuum HG		Weight	
Black	in.	mm	in.	mm	psi	MPa	in.	mm	in.	lb./ft.	kg/m
20018018	1	25.4	1.49	37.8	150	1.03	4.0	102	29	0.64	0.95
20018020	1¼	31.75	1.74	44.2	150	1.03	4.0	102	29	0.77	1.14
20018023	1½	38.1	1.99	50.6	150	1.03	4.0	102	29	0.91	1.36
20018028	2	50.8	2.49	63.2	150	1.03	4.5	114	29	1.71	1.74
20018031	2½	63.5	3.01	76.4	150	1.03	5.75	146	29	1.48	2.20
20018034	3	76.2	3.54	89.9	150	1.03	7.0	178	29	1.91	2.84
20018037	4	101.6	4.59	116.5	150	1.03	10.0	254	29	2.82	4.19
20018042	6	152.4	6.76	171.7	150	1.03	19.0	483	29	5.75	8.56

Air & Multipurpose
General Purpose
Heavy Duty
Push-on

Chemical Transfer

Cleaning Equipment

Food
Transfer
Washdown

Marine

Material Handling
Abrasives
Bulk Transfer
Cement & Concrete

Mining

Petroleum
Aircraft Fueling
Dispensing
Dock
Transfer

Spray

Steam

Vacuum

LPG Delivery

Water
Discharge
Suction & Discharge
Washdown

Welding

Coupling Systems

Equipment

Appendix

Prospector™ Oilfield 300



Product Specifications

Application

Transfer of oil or liquid slurries.

Construction Tube

Nitrile

Cover

Black SBR

Reinforcement

Spiral-plies fabric with wire helix

Temperature Range

-35°F to 180°F (-37°C to 82°C)

Packaging

100' lengths, coiled and polywrapped

Branding (Spiral)

Example: Continental ContiTech Prospector™ Oilfield 300

Couplings

Contact fitting manufacturer for proper fitting recommendation and coupling procedure

Stock Length

100 ft

Order Codes

543-098

Rating

300 psi and full vacuum

Prospector™ Oilfield 300

SAP #	Nom ID		Nom. OD		Max. WP		Weight		Order Code
	in.	mm	in.	mm	psi	MPa	lb./ft.	kg/m	Black
20464301	2	51.1	2.5	64.3	300	2.07	1.21	0.17	543-098
20464302	3	76.1	3	90.8	300	2.07	1.97	0.27	
20464303	4	102.1	4.7	119.7	300	2.07	3.16	0.44	
20531361	5	127.4	5.9	150.3	300	2.07	5.34	0.74	
20464305	6	152.4	6.9	175.4	300	2.07	6.66	9.91	

Air & Multipurpose

- General Purpose
- Heavy Duty
- Push-on

Chemical Transfer

Cleaning Equipment

Food

- Transfer
- Washdown

Marine

Material Handling

- Abrasives
- Bulk Transfer
- Cement & Concrete

Mining

Petroleum

- Aircraft Fueling
- Dispensing
- Dock Transfer

Spray

Steam

Vacuum

LPG Delivery

Water

- Discharge
- Suction & Discharge
- Washdown

Welding

Coupling Systems

Equipment

Appendix

LW Arctic Tank Truck



Product Specifications

Application

For transfer of petroleum-based products under suction, low-pressure discharge or gravity flow. Flexibility maintained down to -65°F (-54°C).

Construction Tube

Black Nitrile RMA Class A (High Oil Resistance)

Cover

Blue Wingprene® (corrugated)

Reinforcement

Spiral-plied synthetic fabric with double wire helix

Temperature Range

-65°F to 180°F (-54°C to 82°C)

Packaging

100' lengths, coiled and polywrapped

Branding (Spiral)

Example: Continental ContiTech LW Arctic Tank Truck 150 psi/10 Bar

Couplings

Contact fitting manufacturer for proper fitting recommendation and coupling procedure.

Order Codes

543-365

LW Arctic Tank Truck

SAP #	ID		Nom. OD		Max. WP		Bend Radius		Vacuum HG		Weight	
	in.	mm	in.	mm	psi	MPa	in.	mm	in.	mm	lb./ft.	kg/m
20017813	2	50.8	2.53	64.3	200	1.38	4	100	29	737	1.11	1.64
20117198	2½	63.5	3.02	76.7	150	1.03	5	125	29	737	1.42	2.11
20017814	3	76.2	3.55	90.2	150	1.03	6	150	29	737	1.83	2.72
20017815	4	101.6	4.61	117.1	150	1.03	9	225	29	737	2.62	3.90

Air & Multipurpose
General Purpose
Heavy Duty
Push-on

Chemical Transfer

Cleaning Equipment

Food
Transfer
Washdown

Marine

Material Handling
Abrasives
Bulk Transfer
Cement & Concrete

Mining

Petroleum
Aircraft Fueling
Dispensing
Dock
Transfer

Spray

Steam

Vacuum

LPG Delivery

Water
Discharge
Suction & Discharge
Washdown

Welding

Coupling Systems

Equipment

Appendix

Plicord® Arctic Flexwing™



Product Specifications

Application

Plicord® Arctic Flexwing® is for use in low-temperature operations for transferring gasoline, oil and other petroleum products.

Construction Tube

Ultra-low temperature oil resistant synthetic rubber RMA Class A (High Oil Resistance)

Cover

Blue ultra-low temperature synthetic rubber RMA Class A (High Oil Resistance) with red spiral stripe. Smooth cover, wrapped finish

Reinforcement

Spiral-plied synthetic fabric with wire helix

Temperature Range

-65°F to 180°F (-54°C to 82°C)

Packaging

100' lengths, coiled and polywrapped

Branding (Spiral)

Example: Continental ContiTech Arctic Flexwing® 150 psi WP

Couplings

Use Continental ContiTech Insta-Lock™ Cam & Groove Fittings with this product. See the Coupling Systems information pages at the back of the catalog.

Order Codes

543-650

Plicord® Arctic Flexwing™

SAP #	ID		Nom. OD		Max. WP		Bend Radius		Vacuum HG		Weight	
	Blue	in.	mm	in.	mm	psi	MPa	in.	mm	in.	mm	lb./ft.
20017996	1¼	31.8	1.73	43.9	150	1.03	3	80	29	737	0.66	0.98
20017997	1½	38.1	1.98	50.3	150	1.03	4	102	29	737	0.82	1.22
20018001	2	50.8	2.50	63.5	150	1.03	5	127	29	737	1.07	1.59
20018002	2½	63.5	3.09	78.5	150	1.03	6	152	29	737	1.64	2.44
20018004	3	76.2	3.58	90.9	150	1.03	7	178	29	737	1.92	2.86
20018005	4	101.6	4.70	119.4	150	1.03	10	254	29	737	2.88	4.29

Air & Multipurpose

General Purpose

Heavy Duty

Push-on

Chemical Transfer

Cleaning Equipment

Food

Transfer

Washdown

Marine

Material Handling

Abrasives

Bulk Transfer

Cement & Concrete

Mining

Petroleum

Aircraft Fueling

Dispensing

Dock

Transfer

Spray

Steam

Vacuum

LPG Delivery

Water

Discharge

Suction & Discharge

Washdown

Welding

Coupling Systems

Equipment

Appendix

Plicord® Fuel Discharge



Product Specifications

Application

Plicord® Fuel Discharge hose is for the discharge of gasoline, oil, ethanol blends and other petroleum based products in tank and industrial applications.

Construction Tube

Nitrile synthetic rubber RMA Class A (High Oil Resistance), plus antistatic wires

Cover

Black Chemivic™ synthetic rubber RMA Class B (Medium-High Oil Resistance)

Reinforcement

Spiral-plied synthetic fabric (2"-4": 2 ply; 6": 4 ply), plus grounding wires

Temperature Range

-35°F to 180°F (-37°C to 82°C)

Plicord® Fuel Discharge

Order Codes: 543-123

SAP #	ID		Nom. OD		Max. WP		Weight	
	in.	mm	in.	mm	psi	MPa	lb./ft.	kg/m
20032339	3/4	19.1	1.21	30.7	150	1.03	0.42	0.63
20032357	1	25.4	1.46	37.1	150	1.03	0.52	0.77
20050546	1¼	31.8	1.72	43.7	150	1.03	0.63	0.94
20017756	1½	38.1	1.95	49.5	150	1.03	0.73	1.09
20017758	2	50.8	2.49	63.3	150	1.03	0.98	1.46
20032358	2½	63.5	2.98	75.7	150	1.03	1.19	1.77
20017764	3	76.2	3.50	88.9	150	1.03	1.45	2.16
20050547	3½	88.9	4.04	102.6	150	1.03	1.70	2.53
20017767	4	101.6	4.52	114.8	150	1.03	1.91	2.84
20126041	6	152.4	6.63	168.4	150	1.03	3.41	5.07

Packaging

100' length, coiled and polywrapped

Branding (Spiral)

Example: Continental ContiTech Plicord® Fuel Discharge

Couplings

Use Continental ContiTech Insta-Lock™ Cam & Groove Fittings with this product. See the Coupling Systems information pages at the back of the catalog.

Order Codes

543-331

Air & Multipurpose
General Purpose
Heavy Duty
Push-on

Chemical Transfer

Cleaning Equipment

Food
Transfer
Washdown

Marine

Material Handling
Abrasives
Bulk Transfer
Cement & Concrete

Mining

Petroleum
Aircraft Fueling
Dispensing
Dock
Transfer

Spray

Steam

Vacuum

LPG Delivery

Water
Discharge
Suction & Discharge
Washdown

Welding

Coupling Systems

Equipment

Appendix

Plicord® ExtremeFlex™ Petroleum Transfer



Product Specifications

Application

An extremely flexible and lightweight drop hose for use in tank truck and in-plant operation to transfer diesel, ethanol, gasoline, oil and petroleum base products up to 60% aromatic content. Corrugated construction for lower drag coefficient and superior abrasion resistance.

Construction Tube

Black Nitrile synthetic rubber (Class A oil resistance)

Cover

Black Chemivic™ synthetic (corrugated)

Reinforcement

Spiral plied synthetic fabric with wire helix

Temperature Range

-40°F to 200°F (-40°C to 93°C)

Packaging

100' lengths, coiled and bagel packed

Branding (Spiral)

Example: Plicord® ExtremeFlex™ Petroleum Transfer

Couplings

Use Continental ContiTech Insta-Lock™ Cam & Groove Fittings.

Order Codes

543-216

Plicord® ExtremeFlex™ Petroleum Transfer

SAP #	ID	Nom. OD		Max. WP		Bend Radius		Vacuum HG		Weight		
		in.	mm	in.	mm	psi	MPa	in.	mm	in.	mm	lb./ft.
20459042	3/4	19.1	1.20	30.5	250	1.72	.75	19	29	737	0.44	0.65
20459043	1	25.4	1.45	36.8	250	1.72	1	25	29	737	0.55	0.81
20459044	1½	38.1	1.91	48.5	250	1.72	1.5	38	29	737	0.73	1.08
20459045	2	50.8	2.43	61.8	250	1.72	2	51	29	737	0.96	1.43
20459046	2½	63.5	3.00	76.1	200	1.37	2.5	64	29	737	1.41	2.10
20459047	3	76.2	3.50	88.8	200	1.37	3	76	29	737	1.69	2.51
20459048	4	101.6	4.56	115.7	150	1.03	4	101	29	737	2.42	3.61
20546328	6	152.4	6.62	168.4	150	1.03	6	146	29	737	4.43	2.01



Air & Multipurpose
General Purpose
Heavy Duty
Push-on

Chemical Transfer

Cleaning Equipment

Food
Transfer
Washdown

Marine

Material Handling
Abrasives
Bulk Transfer
Cement & Concrete

Mining

Petroleum
Aircraft Fueling
Dispensing
Dock
Transfer

Spray

Steam

Vacuum

LPG Delivery

Water
Discharge
Suction & Discharge
Washdown

Welding

Coupling Systems

Equipment

Appendix

Spiraflex® Polyurethane Vapor Recovery



Product Specifications

Application

For the recovery of gasoline vapors in tank truck loading at bulk terminals and in tank truck unloading at service stations.

Construction Tube

Transparent polyurethane

Cover

Transparent polyurethane

Reinforcement

Red rigid Pliovic® helix, available with static wire placed between the tube and cover

Temperature Range

-30°F to 150°F (-34°C to 66°C)

Packaging

100' lengths, coiled and polywrapped

Branding

Not branded

Couplings

Contact fitting manufacturer for proper fitting recommendation and coupling procedure.

Order Codes

586-465 (without static wire)
586-468 (static wire)

Spiraflex® Polyurethane Vapor Recovery

SAP #	ID	Nom. OD		Max. WP		Bend Radius		Weight			
		in.	mm	in.	mm	in.	mm	lb./ft.	kg/m		
20562108	20013586	2	50.8	2.47	62.7	30	0.21	3	76	0.57	0.85
20013561	20013587	3	76.2	3.41	86.6	20	0.14	4	102	0.68	1.01
20013562	20013588	4	101.6	4.51	114.6	15	0.10	7	178	0.98	1.46

Air & Multipurpose
General Purpose
Heavy Duty
Push-on

Chemical Transfer

Cleaning Equipment

Food
Transfer
Washdown

Marine

Material Handling
Abrasives
Bulk Transfer
Cement & Concrete

Mining

Petroleum
Aircraft Fueling
Dispensing
Dock
Transfer

Spray

Steam

Vacuum

LPG Delivery

Water
Discharge
Suction & Discharge
Washdown

Welding

Coupling Systems

Equipment

Appendix

Pyroflex® Hot Tar & Asphalt II



Product Specifications

Application

For the transfer of high temperature petroleum-based materials such as tar, asphalt and hot oils. It is suitable for suction and discharge service on tank trucks, tank cars or at bulk stations. Heat resistant tube and aramid reinforcement. (Hot oils only rated to 200°F/93°C)

Packaging

100' lengths, coiled and polywrapped

Branding (Spiral)

Example: Continental ContiTech Pyroflex® Hot Tar and Asphalt II 150 psi

Construction Tube

Black Nitrile (special heat resistant) synthetic rubber RMA Class A (High Oil Resistance)

Couplings

Contact fitting manufacturer for proper fitting recommendation and coupling procedure.

Cover

Black Wingprene® synthetic rubber RMA Class A (High Oil Resistance) with spiral red stripe

Order Codes

543-118

Reinforcement

Spiral-plied aramid with wire helix

Temperature Range

-25°F to 350°F (-32°C to 177°C)

Pyroflex® Hot Tar & Asphalt II

SAP #	ID		Nom. OD		Max. WP		Bend Radius		Vacuum HG		Weight	
	in.	mm	in.	mm	psi	MPa	in.	mm	in.	mm	lb./ft.	kg/m
20017573	1½	38.1	2.08	52.8	150	1.03	4	102	29	737	1.04	1.55
20017574	2	50.8	2.60	66.0	150	1.03	5	127	29	737	1.33	1.98
20046059	2½	63.5	3.09	78.6	150	1.03	6	152	29	737	1.67	2.49
20017578	3	76.2	3.65	92.8	150	1.03	7	178	29	737	2.23	3.32
20017580	4	101.6	4.68	118.8	150	1.03	10	254	29	737	2.91	4.34

Air & Multipurpose

General Purpose

Heavy Duty

Push-on

Chemical Transfer

Cleaning Equipment

Food

Transfer

Washdown

Marine

Material Handling

Abrasives

Bulk Transfer

Cement & Concrete

Mining

Petroleum

Aircraft Fueling

Dispensing

Dock

Transfer

Spray

Steam

Vacuum

LPG Delivery

Water

Discharge

Suction & Discharge

Washdown

Welding

Coupling Systems

Equipment

Appendix

Pyroflex® Hot Tar Wand



Product Specifications

Application

A high-quality wand hose used in asphalt crack filling applicator and dispensing service.

Construction Tube

Black Nitrile (special heat resistance)

Cover

Black Wingprene® (wrapped finish) flame-retardant

Reinforcement

Spiral-plied (2) steel wire

Temperature Range

-25°F to 350°F (-32°C to 177°C)

Packaging

100' lengths, coiled and polywrapped

Branding (Spiral)

Example: Continental ContiTech Pyroflex® Hot Tar Wand Hose

Couplings

Contact fitting manufacturer for proper fitting recommendation and coupling procedure.

Order Codes

543-632

Pyroflex® Hot Tar Wand

SAP #	ID		Nom. OD		Max. WP		Weight	
	in.	mm	in.	mm	psi	MPa	lb./ft.	kg/m
20017982	3/4	19.1	1.33	33.8	300	2.07	0.64	0.95
20017987	1	25.4	1.61	40.9	300	2.07	0.84	1.25
20156594	1½	38.1	2.11	53.6	300	2.07	1.15	1.71

Air & Multipurpose
General Purpose
Heavy Duty
Push-on

Chemical Transfer

Cleaning Equipment

Food
Transfer
Washdown

Marine

Material Handling
Abrasives
Bulk Transfer
Cement & Concrete

Mining

Petroleum
Aircraft Fueling
Dispensing
Dock
Transfer

Spray

Steam

Vacuum

LPG Delivery

Water
Discharge
Suction & Discharge
Washdown

Welding

Coupling Systems

Equipment

Appendix

Alternative Fuel Compatibility For Tubes and Covers Of Continental ContiTech Fuel Transfer Hoses

Air & Multipurpose
General Purpose
Heavy Duty
Push-on

Chemical Transfer

Cleaning Equipment

Food
Transfer
Washdown

Marine

Material Handling
Abrasives
Bulk Transfer
Cement & Concrete

Mining

Petroleum
Aircraft Fueling
Dispensing
Dock
Transfer

Spray

Steam

Vacuum

LPG Delivery

Water
Discharge
Suction & Discharge
Washdown

Welding

Coupling Systems

Equipment

Appendix

Compatibility by Product

All Continental ContiTech Fuel Transfer Hoses are compatible with gasoline and diesel

Hose Tube & Cover Compatibility Ethanol & Biodiesel

Product	Product Code	Aromatic Content	E-100 100% Ethanol	E-85 85% Ethanol	E-15 15% Ethanol	B-100 100% Biodiesel	B-50 50% Biodiesel	B-20 20% Biodiesel
Infinity	543-773	60%	Tube & Cover	Tube & Cover	Tube & Cover	Tube & Cover	Tube & Cover	Tube & Cover
Infinity HD	543-138	60%	Tube & Cover	Tube & Cover	Tube & Cover	Tube & Cover	Tube & Cover	Tube & Cover
Infinity HD LT	543-663	60%	Tube & Cover	Tube & Cover	Tube & Cover	No	No	No
Flexwing VersaFuel	543-422	60%	Tube & Cover	Tube & Cover	Tube & Cover	Tube & Cover	Tube & Cover	Tube & Cover
Flexwing VersaFuel Flex	543-636	60%	Tube & Cover	Tube & Cover	Tube & Cover	Tube & Cover	Tube & Cover	Tube & Cover
Plicord ExtremeFlex	543-216	60%	Tube & Cover	Tube & Cover	Tube & Cover	No	No	No
Plicord Flexwing Petroleum	543-109	60%	Tube & Cover	Tube & Cover	Tube & Cover	No	No	No
Red Flextra	543-123, 543-120	60%	Tube & Cover	Tube & Cover	Tube & Cover	No	No	No
Paladin	543-227	60%	Tube & Cover	Tube & Cover	Tube & Cover	Tube & Cover	Tube & Cover	Tube & Cover
Plicord Super Black Flexwing®	543-117	60%	Tube & Cover	Tube & Cover	Tube & Cover	No	No	No
Plicord LW Black Flextra II	543-562	50%	Tube & Cover	Tube & Cover	Tube & Cover	No	No	No
Plicord Arctic Flexwing	543-650	50%	Tube & Cover	Tube & Cover	No	No	No	No
LW Arctic Tank Truck	543-365	50%	Tube & Cover	Tube & Cover	No	No	No	No