

ANDERSON PROCESS

CHEMICAL PROCESS EQUIPMENT BUILT TO STAND THE TEST OF TIME



INTEGRATED
CHEMICAL
SOLUTIONS



CHEMICAL PUMPS

**ALMATEC
E-SERIES AODD PUMP**



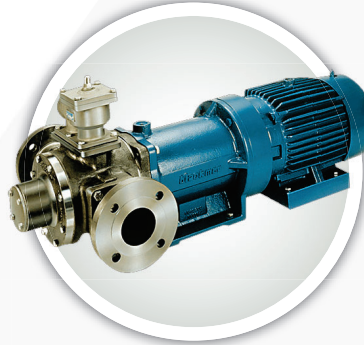
- Flows up to 210 GPM
- Pressures up to 100 psi
- Temperatures up to 248°F
- Three sizes from 1/4" up to 3"
- Max suction lift: 31.2' wet / 16.4' dry
- Max capacities of 0.9 to 35 m³/h

**ANSIMAG SEALLESS
MAGNETIC DRIVE PUMP**



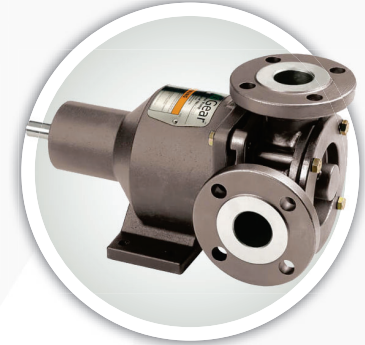
- Flows up to 1,470 GPM
- Pressures up to 225 psi
- Temperature range of -20°F to 250°F
- Meets exacting ASME / ANSI B73.3 and ISO 2858 chemical process pump standards

**BLACKMER
SLIDING VANE PUMP**



- Flows up to 2,200 GPM
- Pressures up to 200 psi
- Viscosity up to 21,000 cP
- Temperatures up to 500°F
- Cast iron, ductile iron and stainless steel options available

**ENVIROGEAR
INTERNAL GEAR PUMP**



- Flows up to 500 GPM
- Pressures up to 200 psi
- Viscosity up to 431,000 SSU
- Temperatures up to 650°F
- Available in port sizes from 1-1/2" NPT to 6" ANSI flanges

**FINISH THOMPSON
ULTRACHEM MAG DRIVE PUMP**



- Flows up to 1,450 GPM
- Pressures up to 136 psi
- Viscosity up to 200 cP
- Temperatures up to 250°F
- ANSI, ISO/DIN Dimensional ETFE-lined ductile iron

**GOULDS NPE
SERIES PUMP**



- Flows up to 175 GPM
- Up to 150 ft head / 125 psi
- 316L stainless steel construction
- High efficiency enclosed impeller
- Standard John Crane mechanical seal design

**GRISWOLD
811 ANSI PUMP**



- Flows up to 7,000 GPM
- Pressures up to 390 psi
- Temperatures up to 500°F
- ANSI part interchangeability
- Alloy 20, ductile iron, 316 stainless steel and CD4MCu options

**LIQIFLO
GEAR PUMP**



- Flows up to 50 GPM
- Pressures up to 350 psi
- Temperatures up to 500°F
- 316 stainless steel or Alloy-C
- NPT/BSPT, ANSI 150# flanged and DIN PN16 flanged connections

**PULSATRON
METERING PUMP**



- Flows up to 600 GPD
- Pressures up to 300 psi
- Accuracy +/- 3% at max capacity
- Fin cooled enclosed solenoid
- Models: A Plus, C, C Plus, E, E-DC, E Plus, HV, MP and T7 Series

**T-MAG
MAG DRIVE PUMP**



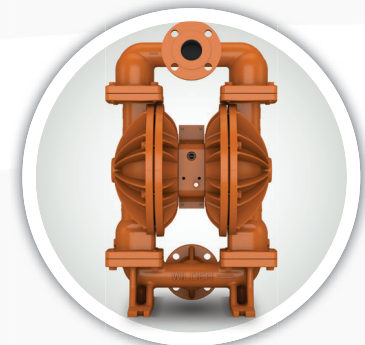
- Flows up to 215 GPM
- Pressures up to 56 psi
- 8 horsepower ratings available
- BSP thread, socket weld union and threaded flat face flange connections
- Heat dissipation technology design

**VIKING
INTERNAL GEAR PUMP**



- Flows up to 1,600 GPM
- Pressures up to 250 psi
- Viscosity up to 2,000,000 SSU
- 1-1/4" to 10" discharge sizes
- Temperatures up to 800°F
- Multiple porting configurations

**WILDEN
DIAPHRAGM PUMP**



- Flows up to 320 GPM
- Pressures up to 125 psi
- Sizes available from 1/4" to 4"
- Max suction lift: 31.1' wet / 25' dry
- ADS options: Pro-Flo, Pro-Flo Shift, Accu-Flo and Turbo-Flo

HOSE & PROCESS EQUIPMENT

CONTINENTAL CHEM ONE



- For the transfer of a variety of industrial chemicals in pressure, gravity flow and/or suction service
- 3/4" to 4" I.D. options available
- Mod XLPE tube / EPDM cover
- Temperature range: -40°F to 250°F

CONTINENTAL FABCHEM



- Handles majority of common industrial chemicals in pressure, gravity flow and suction service
- 1/2" to 4" I.D. options available
- UHMWPE tube / EPDM cover
- Consistent 200 psi rating

CONTINENTAL CONTI CHEM SUPERIOR



- Universal hose with seamless transparent FEP lining of Teflon resistant to all common chemicals
- 1/2" to 2" I.D. options available
- FEP non-conductive tube conforms to FDA and USP Class V standards

GLIDETECH PTFE BIOTECH CHEM



- Suction and delivery hose for a variety of chemicals and solvents
- 1/2" to 3" I.D. options available
- Black conductive PTFE tube
- Consistent 235 psi rating
- Temperature range: -40°F to 302°F

NOVAFLEX 4200BE / 4201BE EPDM CHEMICAL SUCTION



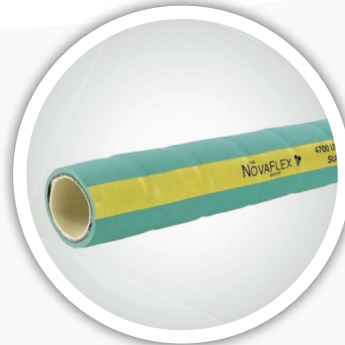
- Medium duty hose designed to meet the general needs of the industry
- 1" to 4" I.D. options available
- EPDM tube and cover construction
- Consistent 150 psi rating
- Temperature range: -30°F to 225°F

NOVAFLEX 4600CF FEP CHEMICAL TRANSFER



- For the transfer of products that require a hose tube with the highest level of chemical resistance
- 1/2" to 3" I.D options available
- FEP Teflon-type tube / EPDM cover
- Pressures up to 500 psi

NOVAFLEX 4700CU UHMW CHEMICAL S & D



- Designed for almost every common chemical used in the industry today
- 3/4" to 6" I.D. options available
- UHMW tube / EPDM cover
- Pressures up to 250 psi
- 4705CU Crush & Kink available

UNI-CHEM / UNI-FLON CHEMICAL COMPOSITE HOSE



- For use in petroleum, chemical and oil transfer, petrochemical vapor recovery and tank truck delivery
- 1" to 10" I.D. options available
- Externally crimped dry seal fittings
- Temperature range: -40°F to 250°F

FILTER TECHNOLOGY BAG FILTER HOUSINGS



- Flows from 35 GPM to 400 GPM
- 3/4" to 4" NPT or flange connection
- Housing materials in carbon, aluminum and stainless steel
- Models: #4-6, #4-12, #8-15, #8-30, #D-815, #D-830, #8815, #8830

FLEX-A-SEAL MECHANICAL SEAL



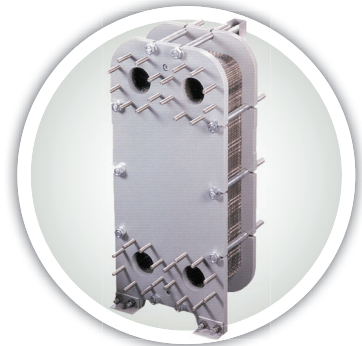
- Pressures up to 1,200 psi
- Speeds up to 10,000 SFPM
- Temperatures up to 800°F
- Single cartridge, dual cartridge, split cartridge and welded metal bellows
- Multiple elastomer options

SHARPE PORTABLE MIXER



- Tank sizes up to 5,000 gallons
- Viscosities up to 15,000 cP
- Clamp, plate or flange mounted
- Direct drive, gear drive, thrifty and USDA approved stainless steel models available

STANDARD XCHANGE HEAT EXCHANGER



- Up to 30,000 GPM
- Pressures up to 450 psi
- Heat transfer area 50,000 SQ FT
- Temperatures from -31°F to 338°F
- Double wall protection and free flow clog resistant options available

Our Chemical LINE CARD

Pump Manufacturers



Hose & Fittings



Filtration



Process



- S** SIZE
INSIDE DIAMETER, LENGTH, OUTSIDE DIAMETER
- T** TEMPERATURE
INTERNAL/EXTERNAL, MINIMUM/MAXIMUM
- A** APPLICATION
WHAT IS THE HOSE BEING USED FOR
- M** MATERIAL
WHAT PRODUCT IS BEING CONVEYED
- P** PRESSURE
NORMAL WORKING PRESSURE, BURST PRESSURE
- E** ENDS
NECESSARY COUPLINGS, TYPE, SIZE AND THREAD
- D** DELIVERY
TESTING, QUALITY, PACKAGING AND DELIVERY



COMBAT CORROSION



OVERCOME DIFFICULT FLUID DYNAMICS



INCREASE UPTIME

Not all products available in all locations

Wisconsin Corporate
Brookfield, WI 53045
(262) 784-3340

Illinois Branch
Lombard, IL 60148
(630) 782-6834

Indiana Branch
Indianapolis, IN 46278
(317) 875-6900

Michigan Branch
Plymouth, MI 48170
(248) 476-7782

AndersonProcess.com • Sales@AndersonProcess.com

Serving Illinois, Indiana, Iowa, Kentucky, Michigan, Ohio and Wisconsin