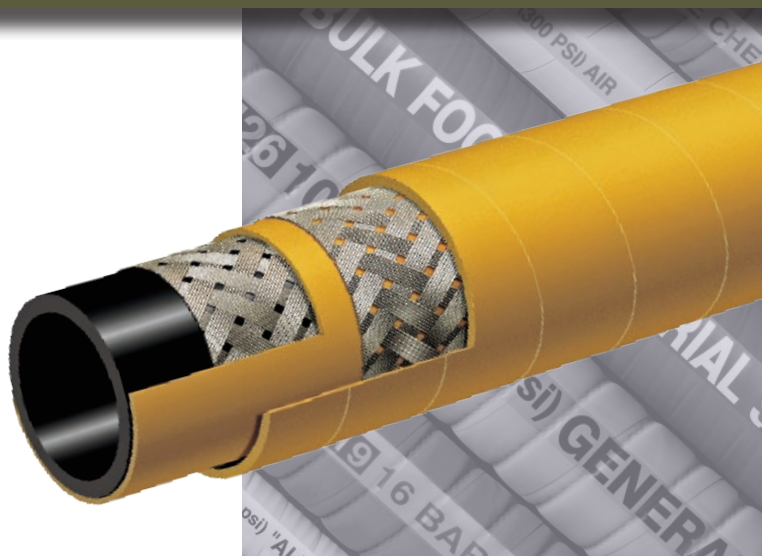


Specialty Hoses



T146AK 1000 PSI Braided MSHA Mine Spray Hose



Applications:

Underground mine water spray for dust control. Also usable on continuous mining machinery.

Cover:

Yellow SBR/NBR blend – abrasion, ozone, hydrocarbon and fire resistant – pin pricked.

Reinforcement:

High tensile steel wire braids.

Tube:

Black Extruded SBR/NBR blend – oil mist resistant.

Working Pressure:

Constant Pressure – 70 BAR (1000 PSI)

Temperature Range:

-22°F (-30°C) to 200°F (+90°C)

Branding:

ALFAGOMMA – ITALY – 70 BAR (1000 PSI) MINE SPRAY MSHA IC – 152/6 (embossed)

Standard Length:

50 or 100 feet

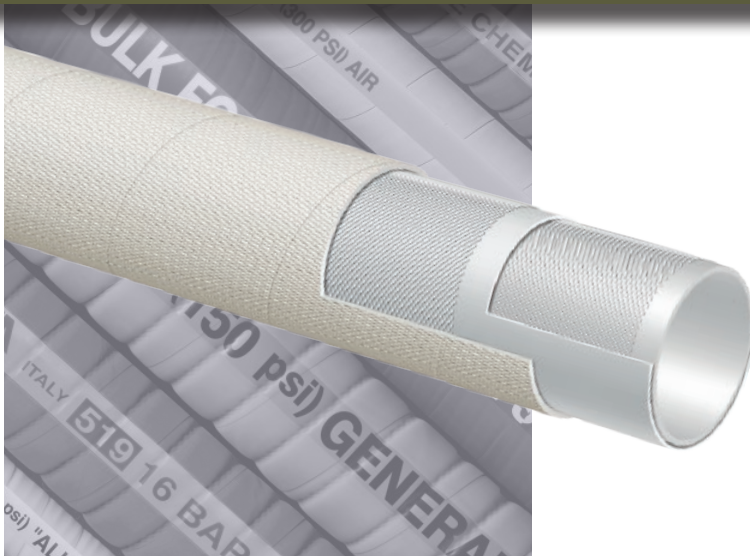
Nominal Specifications

Series	ID (in.)	ID (mm)	OD (in.)	OD (mm)	Max Rec. WP (PSI)	Min. Bending Radius (in. @ 68°F)	Weight (lbs./ft.)
T146AK075	3/4	19	1.10	28	1000	3 3/4	0.45
T146AK100	1	25	1.34	34	1000	5	0.58
T146AK125	1 1/4	32	1.61	41	1000	6 1/4	0.75
T146AK150	1 1/2	38	1.93	49	1000	7 1/2	1.08
T146AK200	2	51	2.48	63	1000	10	1.47

COUPLING SUGGESTIONS

Permanently attached crimped hydraulic couplings.

BECAUSE WE CONTINUALLY EXAMINE WAYS TO IMPROVE OUR PRODUCTS, WE RESERVE THE RIGHT TO ALTER SPECIFICATIONS OR DISCONTINUE PRODUCTS WITHOUT PRIOR NOTICE.



T957LL 300 PSI Furnace Door Coolant Hose

Applications:

To convey cooling water to furnace doors in steel mills, glass plants, foundries, or where the hose is subjected to high temperatures and splashes of white-hot molten metals or glass.

Cover:

Beige EPDM – heat resistant, non-conductive resin-coated dust-free fiberglass cover.

Reinforcement:

High tensile textile cords.

Tube:

White EPDM.

Working Pressure:

Constant Pressure – 20 BAR (300 PSI)

Temperature Range:

Tube: -40°F (-40°C) to 248°F (+120°C)

Cover: -40°F (-40°C) to 1000°F (up to +540°C)

Standard Length:

100 feet

Nominal Specifications

Series	ID (in.)	ID (mm)	OD (in.)	OD (mm)	Max Rec. WP (PSI)	Weight (lbs./ft.)
T957LL050	1/2	13	0.98	25	300	0.30
T957LL075	3/4	19	1.22	31	300	0.46
T957LL100	1	25	1.46	37	300	0.56
T957LL125	1 1/4	32	1.81	46	300	0.82
T957LL150	1 1/2	38	2.13	54	300	0.98
T957LL200	2	51	2.64	67	300	1.26
T957LL250	2 1/2	63	3.19	81	300	1.55
T957LL300	3	76	3.78	96	300	2.15

★ Special order, minimums required. Contact your nearest KOA warehouse location for more information.