

T600AA

Hard Wall Marine Exhaust Hose USCG/SAE J1527 A2/B2



Applications:

Fuel, oil and hydraulic fluids suction and discharge. Suitable for exhaust gas from water cooled stationary or marine diesel engines. Offers maximum flexibility.

Cover:

Black NBR/PVC blend – abrasion, ozone, hydrocarbon and fire resistant.

Reinforcement:

High tensile textile cords with flexible steel helix wire.

Tube:

Black NBR – exhaust gas, fuel and fire resistant.

Working Pressure:

Constant Pressure – 2 Bar (30 PSI)

Temperature Range:

-4°F (-20°C) to 212°F (+100°C)

Branding:

ALFAGOMMA – ITALY T600 MARINE EXHAUST/FUEL S & D – <SIZE> – USCG/SAE J1527 TYPE A2 (in red letters)

Standard Length:

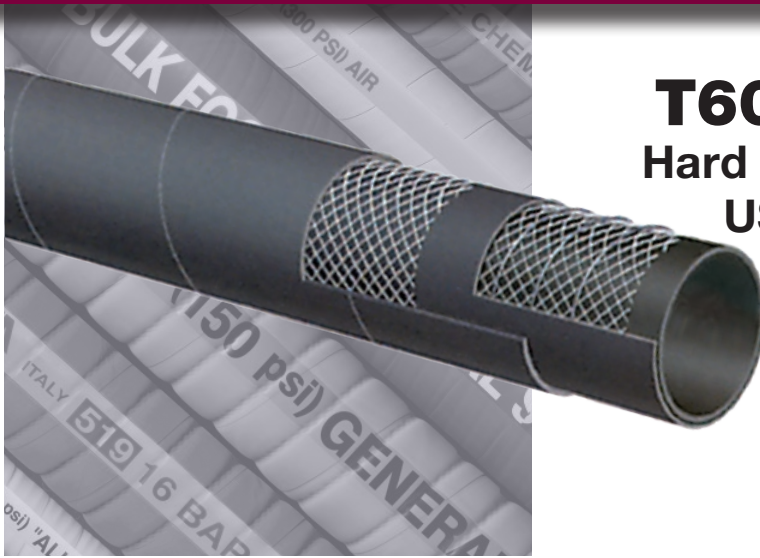
25 or 50 feet

Nominal Specifications

Series	ID (in.)	ID (mm)	OD (in.)	OD (mm)	Max Rec. WP (PSI)	Vacuum HG (in.)	Min. Bending Radius (in. @ 68°F)	Weight (lbs./ft.)
T600AA062	5/8	16	1.02	26	30	30	2	0.36
T600AA075	3/4	19	1.14	29	30	30	2 1/4	0.44
T600AA087	7/8	22	1.26	32	30	30	2 3/4	0.50
T600AA100	1	25	1.38	35	30	30	3	0.56
T600AA112	1 1/8	28	1.50	38	30	30	3 1/4	0.60
T600AA125	1 1/4	32	1.65	42	30	30	3 3/4	0.65
T600AA137	1 3/8	35	1.77	45	30	30	4 1/4	0.70
T600AA150	1 1/2	38	1.89	48	30	30	4 1/2	0.76
T600AA162	1 5/8	42	2.17	52	30	30	5	0.81
T600AA175	1 3/4	45	2.16	55	30	30	5 1/4	0.87
T600AA189	1 7/8	48	2.28	58	30	30	5 3/4	0.91
T600AA200	2	51	2.40	61	30	30	6	0.99
T600AA225	2 1/4	57	2.64	67	30	30	6 3/4	1.09
T600AA238	2 3/8	60	2.76	70	30	27	7	1.25
T600AA250	2 1/2	63	2.87	73	30	27	7 1/2	1.31

continued

BECAUSE WE CONTINUALLY EXAMINE WAYS TO IMPROVE OUR PRODUCTS, WE RESERVE THE RIGHT TO ALTER SPECIFICATIONS OR DISCONTINUE PRODUCTS WITHOUT PRIOR NOTICE.



T600AA (continued) **Hard Wall Marine Exhaust Hose** **USCG/SAE J1527 A2/B2**

Nominal Specifications

Series	ID (in.)	ID (mm)	OD (in.)	OD (mm)	Max Rec. WP (PSI)	Vacuum HG (in.)	Min. Bending Radius (in. @ 68°F)	Weight (lbs./ft.)
T600AA275	2 3/4	70	3.11	80	30	27	8 1/4	1.41
T600AA300	3	76	3.39	86	30	27	9	1.53
T600AA350	3 1/2	90	3.94	100	30	27	10 1/2	1.91
T600AA400	4	102	4.41	112	30	27	12	2.12
T600AA450	4 1/2	115	5.00	127	30	27	13 1/2	2.72
T600AA500	5	127	5.55	141	30	24	15	3.04

BECAUSE WE CONTINUALLY EXAMINE WAYS TO IMPROVE OUR PRODUCTS, WE RESERVE THE RIGHT TO ALTER SPECIFICATIONS OR DISCONTINUE PRODUCTS WITHOUT PRIOR NOTICE.

T653AA Soft Wall Marine Exhaust Hose – SAE J2006 R1



Applications:

Marine wet exhaust and bilge pump connections.

Cover:

Black Synthetic Rubber – abrasion, ozone and hydrocarbon resistant.

Reinforcement:

High tensile textile cords.

Tube:

Black Synthetic Rubber.

Working Pressure:

Constant Pressure – 5 Bar (75 PSI)

Temperature Range:

-22°F (-30°C) to 176°F (+100°C)

Branding:

ALFAGOMMA – ITALY – T653 SOFT WALL MARINE WET EXHAUST SAE J2006 R1 <SIZE> <YYYY MFG> (in blue letters)

Standard Length:

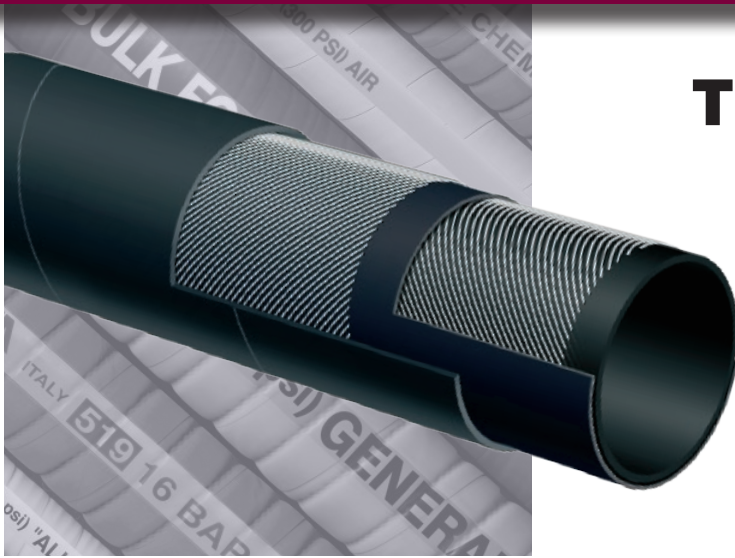
12 1/2 feet in straight lengths

Nominal Specifications

Series	ID (in.)	ID (mm)	OD (in.)	OD (mm)	Max Rec. WP (PSI)	Weight (lbs./ft.)
T653AA100	1	25	1.38	35	75	0.43
T653AA112	1 1/8	28	1.50	38	75	0.47
T653AA125	1 1/4	32	1.65	42	75	0.52
T653AA137	1 3/8	35	1.77	45	75	0.56
T653AA150	1 1/2	38	1.89	48	75	0.61
T653AA162	1 5/8	42	2.05	52	75	0.66
T653AA175	1 3/4	45	2.17	55	75	0.70
T653AA189	1 7/8	48	2.28	58	75	0.75
T653AA200	2	51	2.48	63	75	0.97
T653AA225	2 1/4	57	2.72	69	75	1.07
T653AA238	2 3/8	60	2.91	74	75	1.31
T653AA250	2 1/2	63	3.03	77	75	1.37
T653AA300	3	76	3.54	90	75	1.64
T653AA350	3 1/2	90	4.09	104	75	1.95
T653AA400	4	102	4.57	116	75	2.18

continued

BECAUSE WE CONTINUALLY EXAMINE WAYS TO IMPROVE OUR PRODUCTS, WE RESERVE THE RIGHT TO ALTER SPECIFICATIONS OR DISCONTINUE PRODUCTS WITHOUT PRIOR NOTICE.

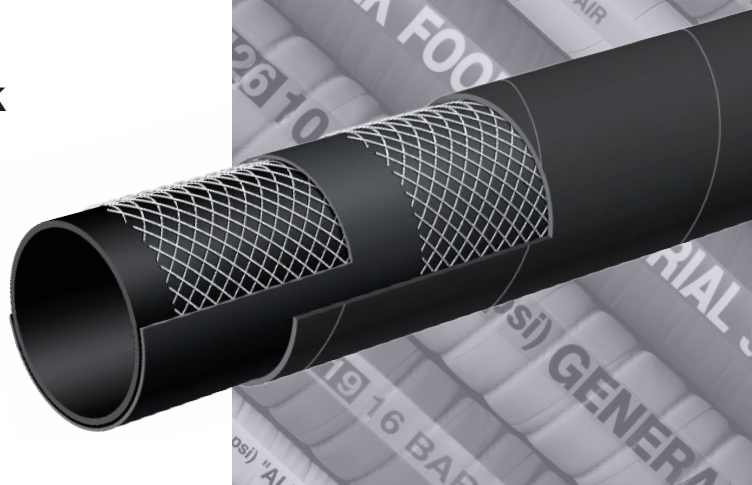


T653AA (continued)
Soft Wall Marine Exhaust
Hose – SAE J2006 R1

Nominal Specifications						
Series	ID (in.)	ID (mm)	OD (in.)	OD (mm)	Max Rec. WP (PSI)	Weight (lbs./ft.)
T653AA450	4 1/2	115	5.08	129	75	2.43
T653AA500	5	127	5.55	141	75	2.68
T653AA600	6	152	6.61	168	75	3.26
T653AA662	6 5/8	168	7.24	184	75	3.57
T653AA800	8	203	8.70	221	75	4.96

BECAUSE WE CONTINUALLY EXAMINE WAYS TO IMPROVE OUR PRODUCTS, WE RESERVE THE RIGHT TO ALTER SPECIFICATIONS OR DISCONTINUE PRODUCTS WITHOUT PRIOR NOTICE.

T6D1AA 400 PSI Oil Rigger / Frack Discharge Hose

**Applications:**

Fracking fluids, liquid mud and crude oil delivery in oil field and gas exploration.

Cover:

Black synthetic elastomer – abrasion, oil and ozone resistant.

Reinforcement:

High tensile textile cords.

Tube:

Black synthetic elastomer.

Working Pressure:

Constant Pressure – 27 Bar (400 PSI)

Temperature Range:

-22°F (-30°C) to 176°F (+80°C)

Branding:

ALFAGOMMA – ITALY OIL RIGGER – FRACK 27 BAR (400 PSI) (in blue letters)

Standard Length:

100 feet

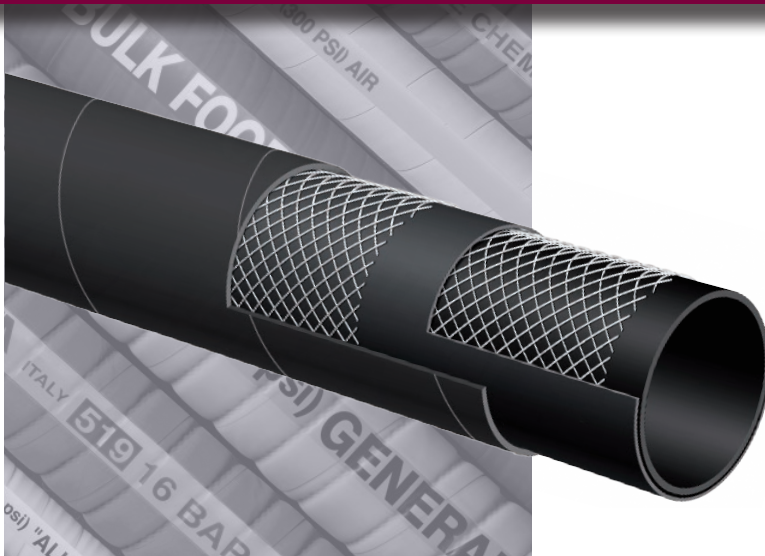
Nominal Specifications

Series	ID (in.)	ID (mm)	OD (in.)	OD (mm)	Max Rec. WP (PSI)	Weight (lbs./ft.)
T6D1AA400	4	102	4.72	120	400	2.89

COUPLING SUGGESTIONS

★ Kuriyama offers a full line of Quick-Acting couplings, pin lug shank couplings and combination nipples. Refer to current Kuriyama-Couplings™ and Accessories Catalog for type and pricing.

BECAUSE WE CONTINUALLY EXAMINE WAYS TO IMPROVE OUR PRODUCTS, WE RESERVE THE RIGHT TO ALTER SPECIFICATIONS OR DISCONTINUE PRODUCTS WITHOUT PRIOR NOTICE.



ST6D2AA

400 PSI Oil Rigger/Frack Discharge Hose with SUPERTUFF Cover

Applications:

Fracking fluids, liquid mud and crude oil delivery in heavy duty oil field and gas exploration.

Cover:

Black SUPERTUFF cover – abrasion, oil and ozone resistant.

Reinforcement:

High tensile textile cords.

Tube:

Black synthetic elastomer.

Working Pressure:

Constant Pressure – 27 Bar (400 PSI)

Temperature Range:

-22°F (-30°C) to 176°F (+80°C)

Branding:

ALFAGOMMA – ITALY OIL RIGGER – FRACK 27 BAR (400 PSI) (in blue letters)

Standard Length:

100 feet

Nominal Specifications

Series	ID (in.)	ID (mm)	OD (in.)	OD (mm)	Max Rec. WP (PSI)	Weight (lbs./ft.)
ST6D2AA400	4	102	4.72	120	400	2.93

COUPLING SUGGESTIONS

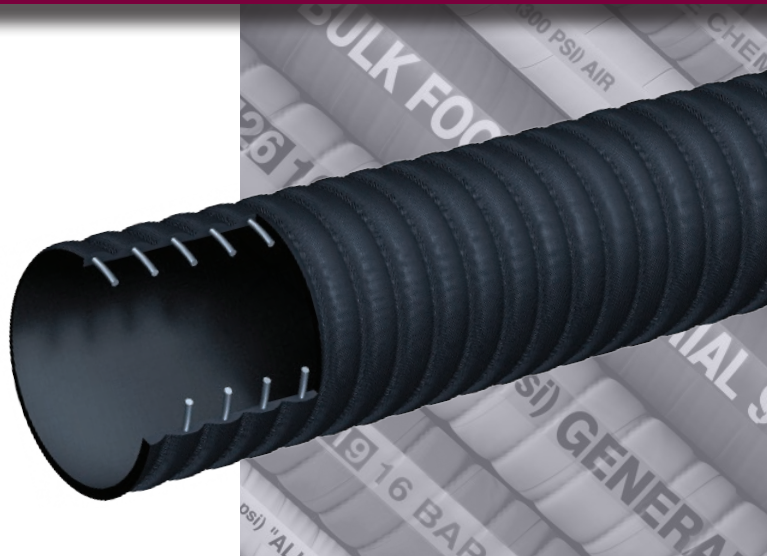
★ Kuriyama offers a full line of Quick-Acting couplings, pin lug shank couplings and combination nipples. Refer to current Kuriyama-Couplings™ and Accessories Catalog for type and pricing.

BECAUSE WE CONTINUALLY EXAMINE WAYS TO IMPROVE OUR PRODUCTS, WE RESERVE THE RIGHT TO ALTER SPECIFICATIONS OR DISCONTINUE PRODUCTS WITHOUT PRIOR NOTICE.

CT601AA

150 PSI Corrugated Oil Rigger/Oil Field-Frack Tank Hose

CORRUGATED



Applications:

Oil field vacuum tank service, for handling crude oil, frack solutions and slurries.

Note: For applications up to 35% aromatics. Not for use with refined petroleum products.

Cover:

Black corrugated SBR – abrasion, ozone, limited oil resistance.

Reinforcement:

High tensile textile cords with flexible steel helix wire.

Tube:

Black Nitrile – PVC blend, limited oil resistance, for oil field use.

Working Pressure:

Constant Pressure – 10 Bar (150 PSI)

Temperature Range:

-22°F (-30°C) to 176°F (+80°C)

Branding:

ALFAGOMMA – ITALY T6C1 10 BAR (150 PSI) OIL FIELD-FRACK TANK S & D (in blue letters)

Standard Length:

100 feet: 2" through 4"

Nominal Specifications

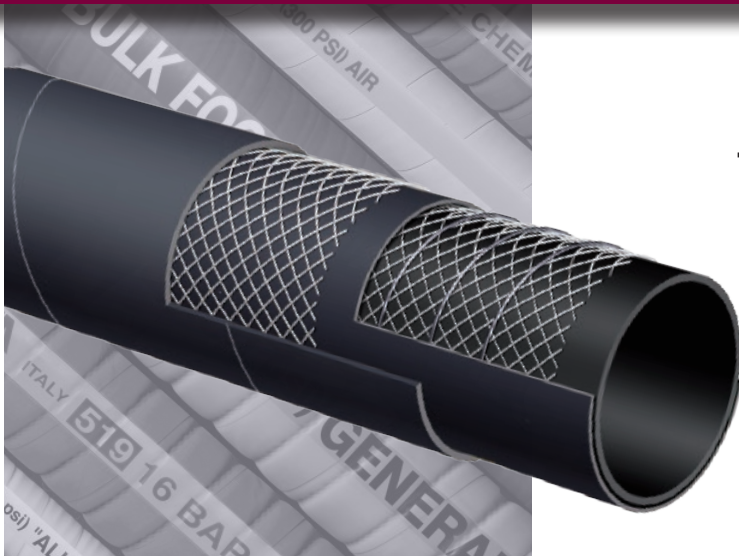
Series	ID (in.)	ID (mm)	OD (in.)	OD (mm)	Max Rec. WP (PSI)	Vacuum HG (in.)	Min. Bending Radius (in. @ 68°F)	Weight (lbs./ft.)
CT601AA200	2	51	2.40	61	150	30	6	0.86
CT601AA300	3	76	3.46	88	150	27	9	1.61
CT601AA400	4	102	4.49	114	150	27	12	2.39

COUPLING SUGGESTIONS

Quick-Acting couplings or combination nipples attached with bands.

★ Kuriyama offers a full line of Quick-Acting couplings, pin lug shank couplings and combination nipples. Refer to current Kuriyama-Couplings™ and Accessories Catalog for type and pricing.

BECAUSE WE CONTINUALLY EXAMINE WAYS TO IMPROVE OUR PRODUCTS, WE RESERVE THE RIGHT TO ALTER SPECIFICATIONS OR DISCONTINUE PRODUCTS WITHOUT PRIOR NOTICE.



T601AA

150 PSI Oil Rigger/Oil Field-Fracc Tank Hose

Applications:

Oil field vacuum tank service, for handling crude oil, fracc solutions and slurries.

Note: For applications up to 35% aromatics. Not for use with refined petroleum products.

Cover:

Black SBR – abrasion, ozone, limited oil resistance.

Reinforcement:

High tensile textile cords with flexible steel helix wire.

Tube:

Black Nitrile – PVC blend, limited oil resistance, for oil field use.

Working Pressure:

Constant Pressure – 10 Bar (150 PSI)

Temperature Range:

-22°F (-30°C) to 176°F (+80°C)

Branding:

ALFAGOMMA – ITALY T601 10 BAR (150 PSI) OIL FIELD-FRACC TANK HOSE (in blue letters)

Standard Length:

100 feet: 2" through 6"
20 feet: 6"

Nominal Specifications

Series	ID (in.)	ID (mm)	OD (in.)	OD (mm)	Max Rec. WP (PSI)	Vacuum HG (in.)	Min. Bending Radius (in. @ 68°F)	Weight (lbs./ft.)
T601AA200	2	51	2.40	61	150	30	10	0.93
T601AA300	3	76	3.46	88	150	27	15	1.73
T601AA400	4	102	4.57	116	150	27	20	2.40
T601AA600	6	152	6.61	168	150	24	30	4.59

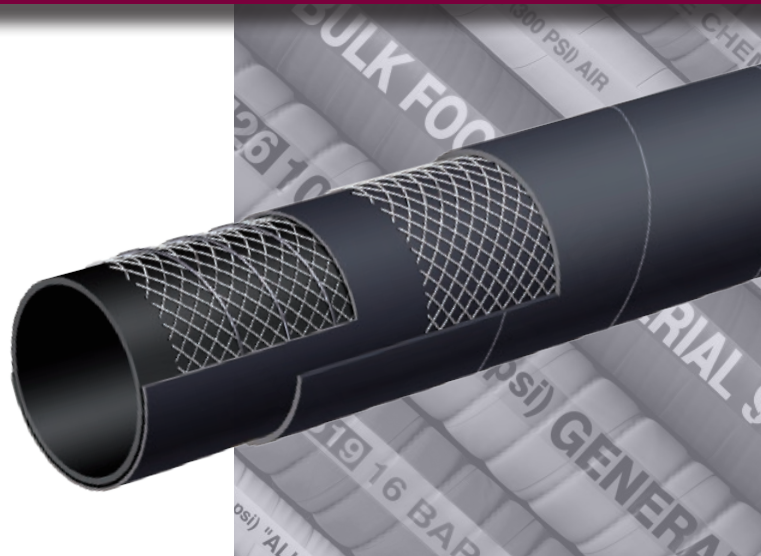
COUPLING SUGGESTIONS

Quick-Acting couplings or combination nipples attached with bands.

★ Kuriyama offers a full line of Quick-Acting couplings, pin lug shank couplings and combination nipples. Refer to current Kuriyama-Couplings™ and Accessories Catalog for type and pricing.

BECAUSE WE CONTINUALLY EXAMINE WAYS TO IMPROVE OUR PRODUCTS, WE RESERVE THE RIGHT TO ALTER SPECIFICATIONS OR DISCONTINUE PRODUCTS WITHOUT PRIOR NOTICE.

T604AA Flexor – SAE 100 R4 Oil Return Hose



Applications:

Low pressure return lines or suction lines with half the bend radius requirements of SAE J517 100 R4, service with petroleum based hydraulic fluids, water-glycol and water-fire resistant hydraulic fluids, oil, lubricants, crude oil, fuel oils and water.

Cover:

Black CR – oil, fuel, weather, ozone and abrasion-resistant.

Reinforcement:

High tensile textile cords with flexible steel helix wire.

Tube:

Black conductive NBR.

Working Pressure:

Constant Pressure – 20 Bar (300 PSI) 3/4"
17 Bar (250 PSI) 1" 14 Bar (200 PSI) 1 1/4"
10 Bar (150 PSI) 1 1/2" 7 Bar (100 PSI) 2"

Temperature Range:

-40° F (-40° C) to 212° F (+100° C) constant operation
Maximum operating temperature: 257° F (+125° C).
Air maximum temperature: 175° F (80° C).

Note: Operating temperatures in excess of 212° F (+100° C) may materially reduce the life of the hose.

Branding:

ALFAGOMMA – ITALY – T604 (PSI) – SAE 100 R4 – (SIZE) –
Date (in white letters)

Standard Length:

100 feet

Nominal Specifications

Series	ID (in.)	ID (mm)	OD (in.)	OD (mm)	Max Rec. WP (PSI)	Vacuum HG (in.)	Min. Bending Radius (in. @ 68°F)	Weight (lbs./ft.)
T604AA075	3/4	19	1.14	29	300	30	2 1/4	0.41
T604AA100	1	25	1.38	35	250	30	3	0.52
T604AA125	1 1/4	32	1.65	42	200	30	3 3/4	0.61
T604AA150	1 1/2	38	1.89	48	150	30	4 1/2	0.70
T604AA200	2	51	2.40	61	100	30	6	0.90

COUPLING SUGGESTIONS

Crimp-on permanent type or combination nipples with bands.

Note: Hose cover does not need to be removed before attaching couplings.

★ Kuriyama offers a full line of Quick-Acting couplings, pin lug shank couplings and combination nipples. Refer to current Kuriyama-Couplings™ and Accessories Catalog for type and pricing.

BECAUSE WE CONTINUALLY EXAMINE WAYS TO IMPROVE OUR PRODUCTS, WE RESERVE THE RIGHT TO ALTER SPECIFICATIONS OR DISCONTINUE PRODUCTS WITHOUT PRIOR NOTICE.



T605AA

150 PSI Black Petroleum S & D Hose

Applications:

For suction and discharge applications in truck and tank car transfer of gasoline, oil and other petroleum-based products with up to 50% aromatic content.

Cover:

Black CR – abrasion, ozone and hydrocarbon resistant.

Reinforcement:

High tensile textile cords with flexible steel helix wire.

Tube:

Black conductive NBR.

Working Pressure:

Constant Pressure – 10 Bar (150 PSI)

Temperature Range:

-22°F (-30°C) to 176°F (+80°C)

Branding:

ALFAGOMMA – ITALY T605 – 10 BAR (150 PSI)
PETROLEUM – S & D - SAE 100R4 (in red letters)

Standard Length:

100 feet: 3/4" through 6"
20 feet: 6", 8"

T605 IS NOT RECOMMENDED FOR USE ON A REEL.

Nominal Specifications

Series	ID (in.)	ID (mm)	OD (in.)	OD (mm)	Max Rec. WP (PSI)	Vacuum HG (in.)	Min. Bending Radius (in. @ 68°F)	Weight (lbs./ft.)
T605AA075	3/4	19	1.14	29	150	30	3	0.41
T605AA100	1	25	1.38	35	150	30	4	0.52
T605AA125	1 1/4	32	1.65	42	150	30	5	0.61
T605AA150	1 1/2	38	1.89	48	150	30	6	0.71
T605AA200	2	51	2.40	61	150	30	8	0.91
T605AA250	2 1/2	63	2.95	75	150	27	10	1.42
T605AA300	3	76	3.54	90	150	27	12	1.75
T605AA400	4	102	4.65	118	150	27	16	2.56
T605AA600	6	152	6.69	170	150	24	24	4.95
T605AA800	8	203	8.86	225	150	21	32	7.87

COUPLING SUGGESTIONS

Quick-Acting, combination nipples attached with bands or internally expanded brass couplings with gasket seal attached with ferrules.

★ Kuriyama offers a full line of Quick-Acting couplings, pin lug shank couplings and combination nipples. Refer to current Kuriyama-Couplings™ and Accessories Catalog for type and pricing.

BECAUSE WE CONTINUALLY EXAMINE WAYS TO IMPROVE OUR PRODUCTS, WE RESERVE THE RIGHT TO ALTER SPECIFICATIONS OR DISCONTINUE PRODUCTS WITHOUT PRIOR NOTICE.

Petroleum



6C5AA 150 PSI Corrugated Tank Truck Hose

CORRUGATED



**NEW
PRODUCT**

Applications:

For suction and discharge applications in truck and tank car transfer of gasoline, oil and other petroleum-based products with up to 50% aromatic content.

Cover:

Black corrugated CR – abrasion, ozone, and hydrocarbon resistant.

Reinforcement:

High tensile textile cords with flexible steel helix wire.

Tube:

Black Conductive NBR.

Working Pressure:

Constant Pressure – 10 Bar (150 PSI)

Temperature Range:

-22°F (-30°C) to 176°F (+80°C)

Branding:

ALFAGOMMA – ITALY T6C5 10 BAR (150 PSI)
PETROLEUM TANK TRUCK (in red letters)

Standard Length:

100 feet: 2" through 4"
20 feet: 6"

Nominal Specifications

Series	ID (in.)	ID (mm)	OD (in.)	OD (mm)	Max Rec. WP (PSI)	Vacuum HG (in.)	Min. Bending Radius (in. @ 68°F)	Weight (lbs./ft.)
6C5AA200	2	51	2.48	63	150	30	4	0.85
6C5AA300	3	76	3.44	90	150	27	6	1.57
6C5AA400	4	102	4.57	116	150	27	8	2.21
6C5AA600	6	152	6.54	166	150	27	12	3.59

COUPLING SUGGESTIONS

Quick-Acting couplings or combination nipples attached with bands.

- ★ Kuriyama offers a full line of Quick-Acting couplings, pin lug shank couplings and combination nipples. Refer to current Kuriyama-Couplings™ and Accessories Catalog for type and pricing.

BECAUSE WE CONTINUALLY EXAMINE WAYS TO IMPROVE OUR PRODUCTS, WE RESERVE THE RIGHT TO ALTER SPECIFICATIONS OR DISCONTINUE PRODUCTS WITHOUT PRIOR NOTICE.



T605AH 150 PSI Red Petroleum S & D Hose

Applications:

For suction and discharge applications in truck and tank car transfer of gasoline, oil and other petroleum-based products with up to 50% aromatic content.

Cover:

Red CR – abrasion, ozone and hydrocarbon resistant.

Reinforcement:

High tensile textile cords with flexible steel helix wire.

Tube:

Black conductive NBR.

Working Pressure:

Constant Pressure – 10 Bar (150 PSI)

Temperature Range:

-22°F (-30°C) to 176°F (+80°C)

Branding:

ALFAGOMMA – ITALY T605 – 10 BAR (150 PSI)
PETROLEUM – S & D (in yellow letters)

Standard Length:

100 feet

T605 IS NOT RECOMMENDED FOR USE ON A REEL.

Nominal Specifications								
Series	ID (in.)	ID (mm)	OD (in.)	OD (mm)	Max Rec. WP (PSI)	Vacuum HG (in.)	Min. Bending Radius (in. @ 68°F)	Weight (lbs./ft.)
T605AH150	1 1/2	38	1.89	48	150	30	6	0.73
T605AH200	2	51	2.40	61	150	30	8	0.94
T605AH300	3	76	3.46	88	150	27	12	1.74
T605AH400	4	102	4.57	116	150	27	16	2.41

COUPLING SUGGESTIONS

Quick-Acting, combination nipples attached with bands or internally expanded brass couplings with gasket seal attached with ferrules.

★ Kuriyama offers a full line of Quick-Acting couplings, pin lug shank couplings and combination nipples. Refer to current Kuriyama-Couplings™ and Accessories Catalog for type and pricing.

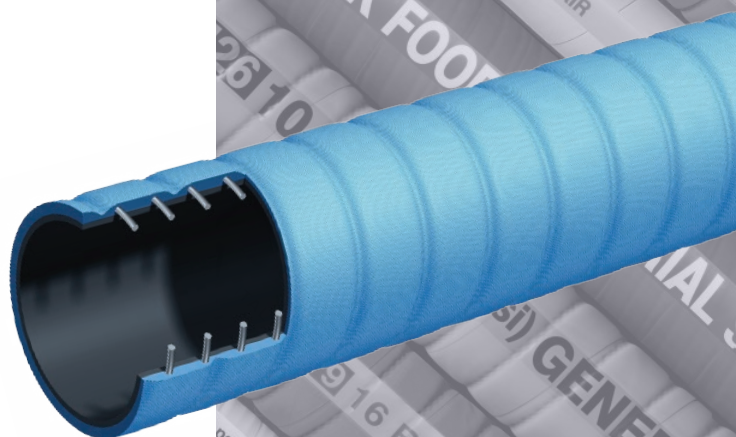
BECAUSE WE CONTINUALLY EXAMINE WAYS TO IMPROVE OUR PRODUCTS, WE RESERVE THE RIGHT TO ALTER SPECIFICATIONS OR DISCONTINUE PRODUCTS WITHOUT PRIOR NOTICE.

Petroleum



T606AE 150 PSI Corrugated Petroleum S & D – Arctic Hose

CORRUGATED



Applications:

For suction and discharge applications in truck and tank car transfer of gasoline, oil and other petroleum-based products with up to 50% aromatic content. Where extreme flexibility is needed in low temperature.

Cover:

Blue corrugated – abrasion, ozone and hydrocarbon resistant.

Reinforcement:

High tensile textile cords with flexible steel helix wire.

Tube:

Black conductive NBR.

Working Pressure:

Constant Pressure – 150 PSI

Temperature Range:

-65°F (-54°C) to 180°F (+82°C)

Branding:

ALFAGOMMA – ITALY T606 – 10 BAR (150 PSI)
PETROLEUM – S & D Arctic (in blue letters on yellow layline)

Standard Length:

100 feet

Nominal Specifications

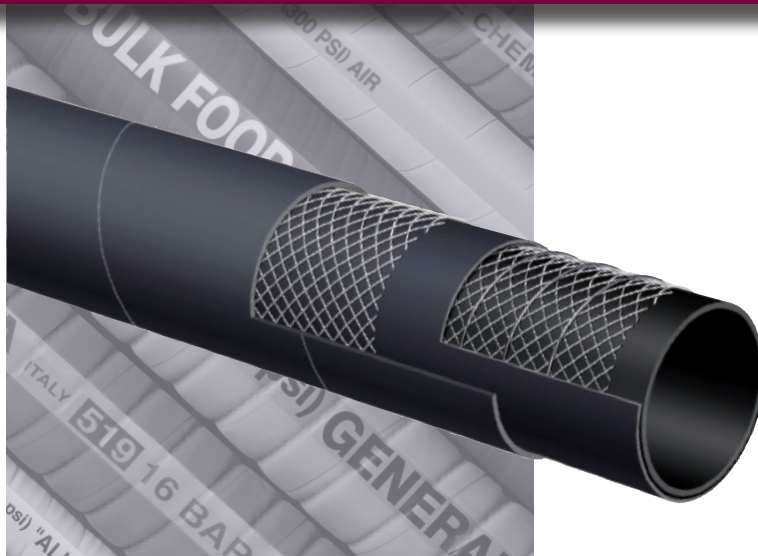
Series	ID (in.)	ID (mm)	OD (in.)	OD (mm)	Max Rec. WP (PSI)	Vacuum HG (in.)	Min. Bending Radius (in. @ 68°F)	Weight (lbs./ft.)
T606AE200	2	51	2.48	63	150	30	3	1.06
T606AE300	3	76	3.54	90	150	30	4 1/2	1.84
T606AE400	4	102	4.57	116	150	30	6	2.67

COUPLING SUGGESTIONS

Quick-Acting, combination nipples attached with bands or internally expanded brass couplings with gasket seal attached with ferrules.

- ★ Kuriyama offers a full line of Quick-Acting couplings, pin lug shank couplings and combination nipples. Refer to current Kuriyama-Couplings™ and Accessories Catalog for type and pricing.

BECAUSE WE CONTINUALLY EXAMINE WAYS TO IMPROVE OUR PRODUCTS, WE RESERVE THE RIGHT TO ALTER SPECIFICATIONS OR DISCONTINUE PRODUCTS WITHOUT PRIOR NOTICE.



T620AA

300 PSI Black Fuel & Oil S & D Hose

Applications:

Fuel and oil suction and discharge for up to 50% aromatic content. Designed for heavy duty applications.

Cover:

Black conductive CR – abrasion, ozone and hydrocarbon resistant.

Reinforcement:

High tensile textile cords with steel helix wire and static wire.

Tube:

Black conductive NBR.

Working Pressure:

Constant Pressure – 20 Bar (300 PSI)

Temperature Range:

-22°F (-30°C) to 176°F (+80°C)

Branding:

ALFAGOMMA – ITALY T620 – 20 BAR (300 PSI)
PETROLEUM – S & D Ω (in red letters)

Standard Length:

100 feet: 2" through 6"
20 feet: 6", 8"

Nominal Specifications

Series	ID (in.)	ID (mm)	OD (in.)	OD (mm)	Max Rec. WP (PSI)	Vacuum HG (in.)	Min. Bending Radius (in. @ 68°F)	Weight (lbs./ft.)
T620AA200	2	51	2.48	63	300	30	8	1.10
T620AA300	3	76	3.54	90	300	27	12	1.77
T620AA400	4	102	4.57	116	300	27	16	2.43
T620AA600	6	152	6.69	170	300	24	24	5.60
T620AA800	8	203	8.86	225	300	21	32	9.24

COUPLING SUGGESTIONS

Quick-Acting, combination nipples attached with bands or internally expanded brass couplings with gasket seal attached with ferrules.

★ Kuriyama offers a full line of Quick-Acting couplings, pin lug shank couplings and combination nipples. Refer to current Kuriyama-Couplings™ and Accessories Catalog for type and pricing.

BECAUSE WE CONTINUALLY EXAMINE WAYS TO IMPROVE OUR PRODUCTS, WE RESERVE THE RIGHT TO ALTER SPECIFICATIONS OR DISCONTINUE PRODUCTS WITHOUT PRIOR NOTICE.

T629AA 150 PSI Black Biofuel Petroleum S & D Hose



Applications:

For suction and discharge applications in truck and tank car transfer of gasoline, oil and Biofuels – up to E98 and B100* with up to 60% aromatic content at ambient temperature.

Cover:

Black specially-blended neoprene – added resistance against abrasion, ozone and hydrocarbons.

Reinforcement:

High tensile textile cords with steel helix wire.

Tube:

Black conductive synthetic rubber.

Working Pressure:

Constant Pressure – 10 Bar (150 PSI)

Temperature Range:

-22°F (-30°C) to 176°F (+80°C)

Branding:

ALFAGOMMA – ITALY T629 – 10 BAR (150 PSI)
BIOFUEL Ω (in green letters)

Standard Length:

100 feet: 3/4" through 4"

★ **T629 is not recommended for use on a reel.**

*Applies to Biodiesels which meet the ASTM D6751 criteria.

Nominal Specifications

Series	ID (in.)	ID (mm)	OD (in.)	OD (mm)	Max Rec. WP (PSI)	Vacuum HG (in.)	Min. Bending Radius (in. @ 68°F)	Weight (lbs./ft.)
T629AA075	3/4	19	1.14	29	150	30	3	0.41
T629AA100	1	25	1.38	35	150	30	4	0.51
T629AA125	1 1/4	32	1.65	42	150	30	5	0.60
T629AA150	1 1/2	38	1.89	48	150	30	6	0.71
T629AA200	2	51	2.40	61	150	30	8	0.91
T629AA250	2 1/2	63	2.95	75	150	27	10	1.42
T629AA300	3	76	3.46	88	150	27	12	1.71
T629AA400	4	102	4.57	116	150	27	16	2.38

COUPLING SUGGESTIONS

Quick-Acting or combination nipples attached with bands.

★ Kuriyama offers a full line of Quick-Acting couplings, pin lug shank couplings and combination nipples. Refer to current Kuriyama-Couplings™ and Accessories Catalog for type and pricing.

BECAUSE WE CONTINUALLY EXAMINE WAYS TO IMPROVE OUR PRODUCTS, WE RESERVE THE RIGHT TO ALTER SPECIFICATIONS OR DISCONTINUE PRODUCTS WITHOUT PRIOR NOTICE.



T650AH 150 PSI Oil Discharge Hose

Applications:

Oil discharge hose designed for use on trucks, docks or barges where a soft wall hose is required.

Cover:

Red CR – abrasion, ozone and hydrocarbon resistant.

Reinforcement:

Spiraled high tensile textile cords with embedded static wire.

Tube:

Black conductive NBR.

Working Pressure:

Constant Pressure – 10 Bar (150 PSI)

Temperature Range:

-22°F (-30°C) to 176°F (+80°C)

Branding:

ALFAGOMMA – ITALY T650 10 BAR (150 PSI) – PETROLEUM DELIVERY (in yellow letters)

Standard Length:

100 feet

Nominal Specifications

Series	ID (in.)	ID (mm)	OD (in.)	OD (mm)	Max Rec. WP (PSI)	Weight (lbs./ft.)
T650AH150	1 1/2	38	1.97	50	150	0.77
T650AH200	2	51	2.40	61	150	0.82
T650AH300	3	76	3.46	88	150	1.42
T650AH400	4	102	4.49	114	150	1.92

COUPLING SUGGESTIONS

Quick-Acting or combination nipples attached with bands.

★ Kuriyama offers a full line of Quick-Acting couplings, pin lug shank couplings and combination nipples. Refer to current Kuriyama-Couplings™ and Accessories Catalog for type and pricing.

BECAUSE WE CONTINUALLY EXAMINE WAYS TO IMPROVE OUR PRODUCTS, WE RESERVE THE RIGHT TO ALTER SPECIFICATIONS OR DISCONTINUE PRODUCTS WITHOUT PRIOR NOTICE.

T614AA

150 PSI Hot Tar & Asphalt S & D Hose



Applications:

Hot tar and asphalt suction and discharge service.

Cover:

Black CSM – abrasion, ozone and hot tar resistant.

Reinforcement:

High tensile textile cords with steel helix wire.

Tube:

Black NBR – hot tar and asphalt resistant.

Working Pressure:

10 Bar (150 PSI)

Temperature Range:

-4°F (-20°C) to 356°F (+180°C)

Branding:

ALFAGOMMA – ITALY T614 10 BAR (150 PSI) HOT TAR AND ASPHALT (on red stripe)

Standard Length:

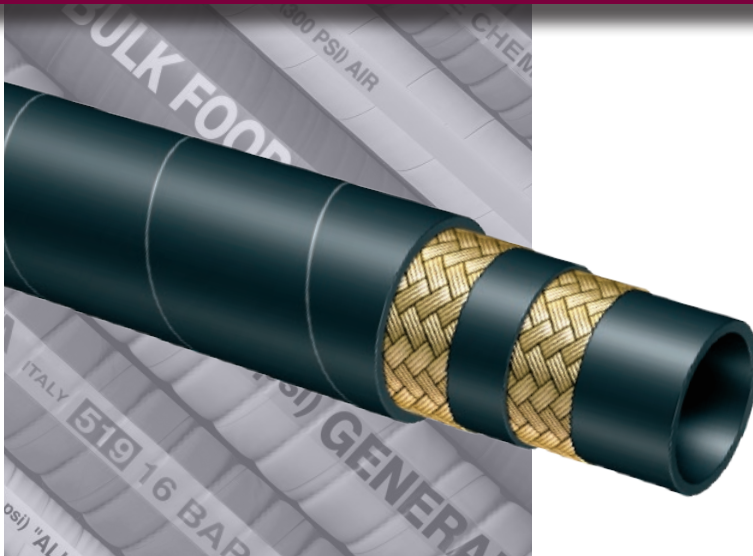
100 feet

Nominal Specifications

Series	ID (in.)	ID (mm)	OD (in.)	OD (mm)	Wall Thickness (mm)	Max Rec. WP (PSI)	Vacuum HG (in.)	Min. Bending Radius (in.)	Weight (lbs./ft.)
T614AA200	2	51	2.72	69	9	150	30	10	1.64
T614AA300	3	76	3.78	96	10	150	27	15	2.69
T614AA400	4	102	4.80	122	10	150	27	20	3.57

COUPLING SUGGESTIONS

Permanently attached couplings are suggested for assemblies.



T631AA

300 PSI Hot Tar & Asphalt Applicator Delivery Hose

Applications:

Hot tar and asphalt delivery service.

Cover:

Black CR – abrasion, ozone, hydrocarbon and fire resistant.

Reinforcement:

High tensile steel wire braids.

Tube:

Black NBR – hot tar and asphalt resistant.

Safety Factor:

10:1

Working Pressure:

20 Bar (300 PSI)

Temperature Range:

-22°F (-30°C) to 356°F (+180°C)

Branding:

ALFAGOMMA – ITALY T631 20 BAR (300 PSI) HOT TAR AND ASPHALT (embossed)

Standard Length:

100 feet

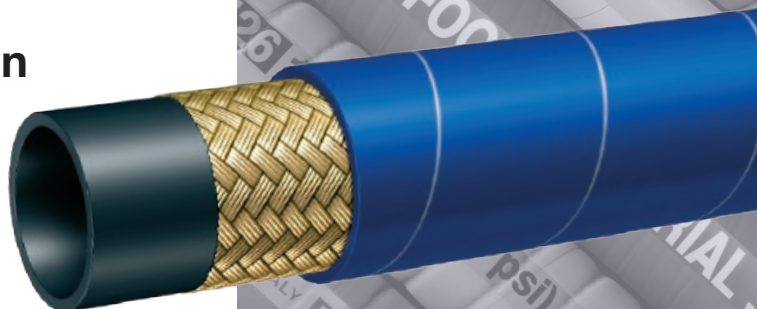
Nominal Specifications

Series	ID (in.)	ID (mm)	OD (in.)	OD (mm)	Wall Thickness (mm)	Max Rec. WP (PSI)	Min. Bending Radius (in.)	Weight (lbs./ft.)
T631AA075	3/4	19	1.26	32	6	300	3	0.50
T631AA100	1	25	1.50	38	6	300	3	0.77

COUPLING SUGGESTIONS

Permanently attached couplings are suggested for assemblies.

T631AE 300 PSI Hydrocarbon Drain Hose



**NEW
PRODUCT**

Applications:

Drain hose for residue from cleaning storage tanks and refining hydrocarbons.

Cover:

Blue CR – abrasion and hydrocarbon resistant.

Reinforcement:

High tensile steel wire braids.

Tube:

Black NBR-hydrocarbon resistant.

Working Pressure:

20Bar (300 PSI)

Temperature Range:

-22°F (-30°C) to 356°F (+180°C)

Branding:

ALFAGOMMA-HYDROCARBON DRAIN HOSE-300PSI

Standard Length:

100 Feet

Nominal Specifications

Series	ID (in.)	ID (mm)	OD (in.)	OD (mm)	Wall Thickness (mm)	Max Rec. WP (PSI)	Min. Bending Radius (in.)	Approx. Weight (lbs./ft.)
T631AE075	3/4	19	1.26	32	6	300	3	0.50