

# Material Handling



## LT753AA 150 PSI 2-Ply Abrasive Material Blast Hose



### Applications:

Designed to convey abrasives, sand and shot blast material.

### Cover:

Black conductive SBR/NR blend – abrasion and ozone resistant – pin pricked.

### Reinforcement:

High tensile textile cords – 2-ply construction.

### Tube:

Black static conducting NR – offering excellent abrasion resistance.

### Working Pressure:

Constant Pressure – 10 Bar (150 PSI)

### Temperature Range:

-22°F (-30°C) to 176°F (+80°C)

### Branding:

ALFAGOMMA – ITALY T750 ABRASIVE MATERIAL BLAST – 10 BAR (150 PSI) Ω (in white letters)

### Standard Length:

50 or 100 feet

### Nominal Specifications

| Series     | ID (in.) | ID (mm) | OD (in.) | OD (mm) | Tube Thickness (mm) | Max Rec. WP (PSI) | Weight (lbs./ft.) |
|------------|----------|---------|----------|---------|---------------------|-------------------|-------------------|
| LT753AA050 | 1/2      | 13      | 1.06     | 27      | 0.212               | 150               | 0.34              |
| LT753AA125 | 1 1/4    | 32      | 1.89     | 48      | 0.240               | 150               | 0.77              |

NOTE: Tolerances according to RMA Class 311-A

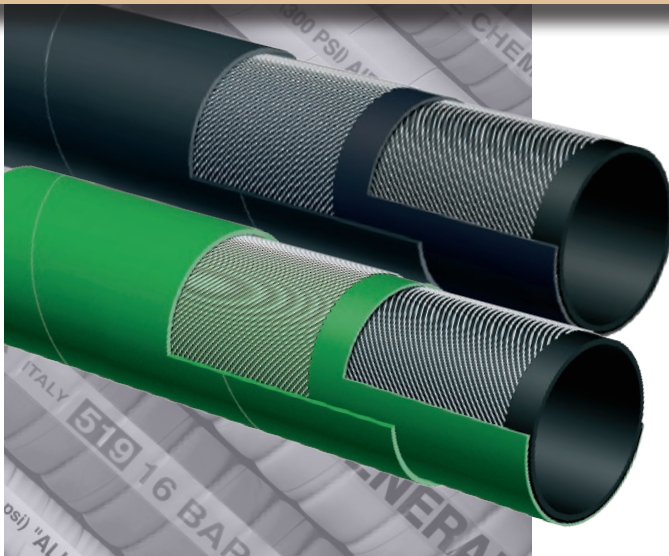
## Blasting Data Guide

Premature hose wear can be prevented if the proper nozzle size is used for the corresponding hose ID size. (See chart below)

### Blasting Data Guide

| Series         | UB8   | UB7   | UB6   | UB5   | UB4   |
|----------------|-------|-------|-------|-------|-------|
| NOZZLE SIZE    | 1/2   | 7/16  | 3/8   | 5/16  | 1/4   |
| CFM @ 100 PSI  | 350   | 260   | 200   | 150   | 90    |
| AIR HOSE       | 2     | 1 1/2 | 1 1/2 | 1 1/4 | 1 1/4 |
| S.B. HOSE SIZE | 1 1/2 | 1 1/2 | 1 1/4 | 1 1/4 | 1     |
| MAT. LB/HR     | 2250  | 1750  | 1260  | 900   | 540   |

BECAUSE WE CONTINUALLY EXAMINE WAYS TO IMPROVE OUR PRODUCTS, WE RESERVE THE RIGHT TO ALTER SPECIFICATIONS OR DISCONTINUE PRODUCTS WITHOUT PRIOR NOTICE.



## T750AA / T750AG 150 PSI 4-Ply Abrasive Material Blast Hose

**T750AA**  
Black Cover

**T750AG**  
Green Cover

**Applications:**

Designed to convey abrasives, sand and shot blast material.

**Cover:**

Black or green, conductive SBR/NR blend – abrasion and ozone resistant – pin pricked.

**Reinforcement:**

High tensile textile cords – 4-ply construction.

**Tube:**

Black static conducting natural rubber – offering excellent abrasion resistance.

**Working Pressure:**

Constant Pressure – 10 Bar (150 PSI)

**Temperature Range:**

-22°F (-30°C) to 176°F (+80°C)

**Branding:**

ALFAGOMMA – ITALY T750 ABRASIVE MATERIAL BLAST – 10 BAR (150 PSI) Ω (in white letters)

**Standard Length:**

50 or 100 feet

### Nominal Specifications

| Series       | ID (in.) | ID (mm) | OD (in.) | OD (mm) | Tube Thickness (mm) | Max Rec. WP (PSI) | Weight (lbs./ft.) |
|--------------|----------|---------|----------|---------|---------------------|-------------------|-------------------|
| T750AA/AG075 | 3/4      | 19      | 1.50     | 38      | 0.236               | 150               | 0.68              |
| T750AA/AG100 | 1        | 25      | 1.89     | 48      | 0.283               | 150               | 1.04              |
| T750AA/AG125 | 1 1/4    | 32      | 2.17     | 55      | 0.283               | 150               | 1.23              |
| T750AA/AG150 | 1 1/2    | 38      | 2.36     | 60      | 0.260               | 150               | 1.40              |
| T750AA200    | 2        | 51      | 2.87     | 73      | 0.260               | 150               | 1.77              |

NOTE: Tolerances according to RMA Class 311-A

| HOSE ID (in.) | HOSE ENDS           | NOZZLE HOLDERS | THREADED FEMALE ADAPTER | GASKETS |
|---------------|---------------------|----------------|-------------------------|---------|
| 3/4           | Q-1AL, Q-1BR, Q-1PI | NH-1AL, NH-1BR | –                       | SBG     |
| 1             | Q-2AL, Q-2BR, Q-2PI | NH-2AL, NH-2BR | –                       | SBG     |
| 1 1/4         | Q-3AL, Q-3BR, Q-3PI | NH-3AL, NH-3BR | SB-1AL, SB-1BR          | SBG     |
| 1 1/2         | Q-4AL, Q-4BR, Q-4PI | NH-4AL, NH-4BR | SB-2AL, SB-2BR          | SBG     |

**COUPLING SUGGESTIONS**

Sandblast couplings and nozzle holders attached with screws. See next column for coupling part numbers.

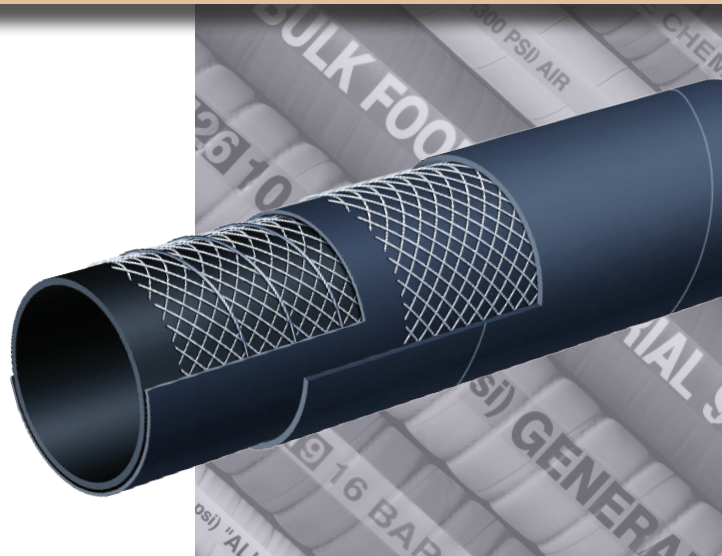
★ Kuriyama offers a full line of sandblast couplings. Refer to current Kuriyama-Couplings™ and Accessories Catalog.

BECAUSE WE CONTINUALLY EXAMINE WAYS TO IMPROVE OUR PRODUCTS, WE RESERVE THE RIGHT TO ALTER SPECIFICATIONS OR DISCONTINUE PRODUCTS WITHOUT PRIOR NOTICE.

# Material Handling



## T720AA Bulk Material S & D Hose



### Applications:

Suction and discharge of wet or dry abrasive materials. Designed for grains and dry cement.

### Cover:

Black conductive SBR/NR blend – abrasion and ozone resistant.

### Reinforcement:

Spiraled high tensile textile cords with flexible steel helix wire.

### Tube:

3/16" black conductive NR – abrasion resistant.

### Working Pressure:

Constant Pressure –  
10 Bar (150 PSI) for 2", 3", 4"  
5 Bar (75 PSI) for 5", 6", 8"

### Temperature Range:

-22°F (-30°C) to 176°F (+80°C)

### Branding:

ALFAGOMMA – ITALY T720 – BULK MATERIAL – S & D  
(in white letters)

### Standard Length:

100 feet: 2" through 4"  
20 feet: 5", 6" and 8"  
50 feet: 4", 5" and 6"

## Nominal Specifications

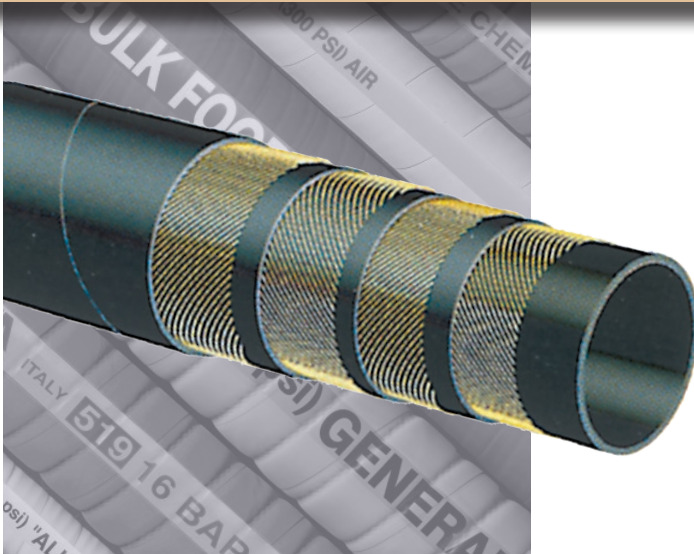
| Series    | ID (in.) | ID (mm) | OD (in.) | OD (mm) | Max Rec. WP (PSI) | Vacuum HG (in.) | Min. Bending Radius (in. @ 68°F) | Weight (lbs./ft.) |
|-----------|----------|---------|----------|---------|-------------------|-----------------|----------------------------------|-------------------|
| T720AA200 | 2        | 51      | 2.56     | 65      | 150               | 30              | 6                                | 0.97              |
| T720AA300 | 3        | 76      | 3.54     | 90      | 150               | 27              | 9                                | 1.54              |
| T720AA400 | 4        | 102     | 4.57     | 116     | 150               | 27              | 12                               | 2.15              |
| T720AA500 | 5        | 127     | 5.63     | 143     | 75                | 24              | 20                               | 3.20              |
| T720AA600 | 6        | 152     | 6.61     | 168     | 75                | 24              | 24                               | 4.01              |
| T720AA800 | 8        | 203     | 8.70     | 221     | 75                | 21              | 32                               | 6.05              |

### COUPLING SUGGESTIONS

Quick-Acting, pin lug, short shank couplings or combination nipples attached with single bolt, double bolt, wire or band type clamps.

- ★ Kuriyama offers a full line of Quick-Acting couplings, pin lug shank couplings and combination nipples. Refer to current Kuriyama-Couplings™ and Accessories Catalog for type and pricing.

BECAUSE WE CONTINUALLY EXAMINE WAYS TO IMPROVE OUR PRODUCTS, WE RESERVE THE RIGHT TO ALTER SPECIFICATIONS OR DISCONTINUE PRODUCTS WITHOUT PRIOR NOTICE.



## T740AA

### 1275 PSI High Performance Steel - Reinforced Concrete Pumping Hose

**Applications:**

Steel-reinforced concrete pumping hose – Special easy-handling construction for concrete placement at casting site.

**Cover:**

Black conductive SBR/NR blend – abrasion and ozone resistant.

**Reinforcement:**

High tensile steel cords.

**Tube:**

Black conductive NR – abrasion resistant.

**Working Pressure:**

Working Pressure – 85 Bar (1275 PSI)

**Temperature Range:**

-22°F (-30°C) to 176°F (+80°C)

**Branding:**

ALFAGOMMA – ITALY T740 85 BAR (1275 PSI) W. P. HEAVY DUTY CONCRETE PUMPING (in white letters)

**Standard Length:**

100 feet 2" through 4"  
50 feet 2" through 5"

#### Nominal Specifications

| Series    | ID (in.) | ID (mm) | OD (in.) | OD (mm) | Wall Thickness (mm) | Max Rec. WP (PSI) | Min. Bending Radius (in.) | Weight (lbs./ft.) |
|-----------|----------|---------|----------|---------|---------------------|-------------------|---------------------------|-------------------|
| T740AA200 | 2        | 51      | 2.72     | 69      | 9                   | 1275              | 10                        | 1.44              |
| T740AA250 | 2 1/2    | 63      | 3.35     | 85      | 11                  | 1275              | 10 1/2                    | 2.25              |
| T740AA300 | 3        | 76      | 3.94     | 100     | 12                  | 1275              | 15                        | 3.06              |
| T740AA400 | 4        | 102     | 5.04     | 128     | 13                  | 1275              | 20                        | 4.72              |
| T740AA500 | 5        | 127     | 6.10     | 155     | 14                  | 1275              | 25                        | 6.95              |

**COUPLING SUGGESTIONS**

Tubular steel full flow male permanently swaged or internally expanded with ferrule to provide maximum hose coupling compatibility.

# Material Handling



## T757AA / T737AA 600 PSI Plaster & Concrete Hose (Series T737AA for 3" ID)



### Applications:

Designed for pumping plaster, grout, and wet cement to placement sites.

### Cover:

Black conductive SBR/NR – abrasion and ozone resistant.

### Reinforcement:

High tensile textile cords.

### Tube:

Black conductive NR – abrasion resistant.

### Working Pressure:

Constant Pressure – 40 Bar (600 PSI)

### Temperature Range:

-22°F (-30°C) to 176°F (+80°C)

### Branding:

ALFAGOMMA – ITALY T757 – 40 BAR (600 PSI)  
PLASTER & CONCRETE (in white letters) and  
ALFAGOMMA – ITALY T737 – 40 BAR (600 PSI)  
PLASTER & CONCRETE (in white letters)

### Standard Length:

100 feet

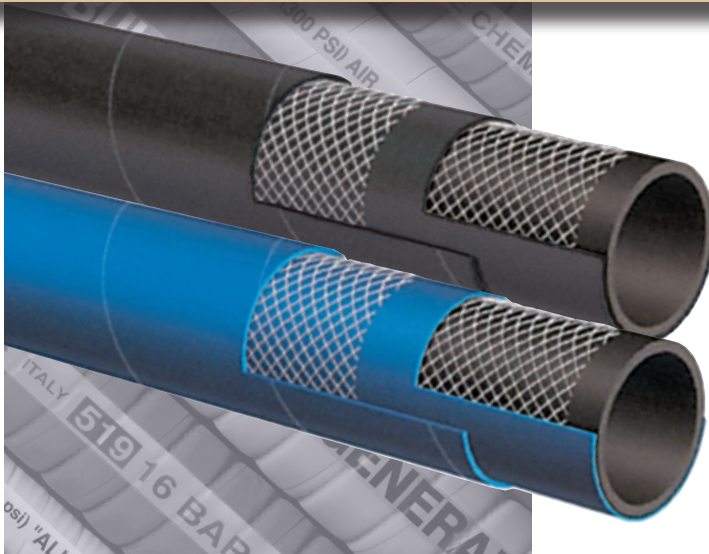
## Nominal Specifications

| Series    | ID (in.) | ID (mm) | OD (in.) | OD (mm) | Max Rec. WP (PSI) | Weight (lbs./ft.) |
|-----------|----------|---------|----------|---------|-------------------|-------------------|
| T757AA150 | 1 1/2    | 38      | 2.13     | 54      | 600               | 0.82              |
| T757AA200 | 2        | 51      | 2.64     | 67      | 600               | 1.09              |
| T737AA300 | 3        | 76      | 4.09     | 104     | 600               | 2.96              |

### COUPLING SUGGESTIONS

Tubular steel full flow male permanently swaged or internally expanded with ferrule to provide maximum hose coupling compatibility.

BECAUSE WE CONTINUALLY EXAMINE WAYS TO IMPROVE OUR PRODUCTS, WE RESERVE THE RIGHT TO ALTER SPECIFICATIONS OR DISCONTINUE PRODUCTS WITHOUT PRIOR NOTICE.



## T758AA / T758AE 800 PSI Plaster, Grout & Concrete Hose

**T758AA**  
Black Cover

**T758AE**  
Blue Cover

**Applications:**

Designed for pumping plaster, grout, wet cement to construction placement sites at rated pressures.

**Cover:**

Black SBR/NR.  
Blue SBR/EPDM.

**Reinforcement:**

Spiraled high tensile textile cords.

**Tube:**

Black conductive NR – abrasion-resistant.

**Working Pressure:**

Constant Pressure – 55 Bar (800 PSI)

**Temperature Range:**

-22°F (-30°C) to 176°F (+80°C)

**Branding:**

ALFAGOMMA – ITALY T758 – 55 BAR (800 PSI)  
PLASTER & CONCRETE (in white letters)

**Standard Length:**

100 feet

**Nominal Specifications**

| Series       | ID (in.) | ID (mm) | OD (in.) | OD (mm) | Max Rec. WP (PSI) | Weight (lbs./ft.) |
|--------------|----------|---------|----------|---------|-------------------|-------------------|
| T758AA/AE100 | 1        | 25      | 1.57     | 40      | 800               | 0.60              |
| T758AA/AE125 | 1 1/4    | 32      | 1.93     | 49      | 800               | 0.85              |
| T758AA/AE150 | 1 1/2    | 38      | 2.28     | 58      | 800               | 1.15              |
| T758AA/AE200 | 2        | 51      | 2.80     | 71      | 800               | 1.49              |

**COUPLING SUGGESTIONS**

Tubular steel full flow male permanently swaged or internally expanded with ferrule to provide maximum hose coupling compatibility.

# Material Handling



NEW  
SIZE

## T760AA 75 PSI Light Weight Dry Powder Delivery Hose



### Applications:

Discharge of dry powders under low pressure, such as dry cement, grains and animal feed transfer.

### Cover:

Black conductive SBR/NR blend – abrasion and ozone resistant.

### Reinforcement:

Spiraled high tensile textile cords.

### Tube:

3/16" black static conducting NR – compounded to resist cutting by abrasive materials.

### Working Pressure:

Constant Pressure – 5 Bar (75 PSI)

### Temperature Range:

-22°F (-30°C) to 176°F (+80°C)

### Branding:

ALFAGOMMA – ITALY T760 5 BAR (75 PSI) BULK MATERIAL DELIVERY (in white letters)

### Standard Length:

100 feet

## Nominal Specifications

| Series    | ID (in.) | ID (mm) | OD (in.) | OD (mm) | Max Rec. WP (PSI) | Weight (lbs./ft.) |
|-----------|----------|---------|----------|---------|-------------------|-------------------|
| T760AA400 | 4        | 102     | 4.53     | 115     | 75                | 1.58              |
| T760AA450 | 4 1/2    | 115     | 5.00     | 127     | 75                | 1.85              |
| T760AA500 | 5        | 127     | 5.47     | 139     | 75                | 2.05              |
| T760AA600 | 6        | 152     | 6.61     | 168     | 75                | 2.30              |

★ Excessive bending during operation may cause premature wear.

### COUPLING SUGGESTIONS

Quick-Acting, pin lug, short shank couplings or combination nipples attached with single bolt, double bolt, wire or band type clamps.

★ Kuriyama offers a full line of Quick-Acting couplings, pin lug shank couplings and combination nipples. Refer to current Kuriyama-Couplings™ and Accessories Catalog for type and pricing.

BECAUSE WE CONTINUALLY EXAMINE WAYS TO IMPROVE OUR PRODUCTS, WE RESERVE THE RIGHT TO ALTER SPECIFICATIONS OR DISCONTINUE PRODUCTS WITHOUT PRIOR NOTICE.



## T763AA 75 PSI Heavy Weight Dry Powder Delivery Hose

**Applications:**

Discharge of dry powders under low pressure.  
Pneumatic transfer of dry materials and abrasive slurries.

**Cover:**

Black conductive SBR/NR blend – abrasion and ozone resistant.

**Reinforcement:**

Spiraled high tensile textile cords.

**Tube:**

1/4" black static conducting NR – compounded to resist cutting by abrasive materials.

**Working Pressure:**

Constant Pressure – 5 Bar (75 PSI)

**Temperature Range:**

-22°F (-30°C) to 176°F (+80°C)

**Branding:**

ALFAGOMMA – ITALY T763 5 BAR (75 PSI) BULK MATERIAL DELIVERY (in green letters)

**Standard Length:**

100 feet

### Nominal Specifications

| Series    | ID (in.) | ID (mm) | OD (in.) | OD (mm) | Max Rec. WP (PSI) | Weight (lbs./ft.) |
|-----------|----------|---------|----------|---------|-------------------|-------------------|
| T763AA400 | 4        | 102     | 4.72     | 120     | 75                | 2.14              |
| T763AA450 | 4 1/2    | 115     | 5.24     | 133     | 75                | 2.30              |
| T763AA500 | 5        | 127     | 5.71     | 145     | 75                | 2.60              |

★ Excessive bending during operation may cause premature wear.

**COUPLING SUGGESTIONS**

Quick-Acting, pin lug, short shank couplings or combination nipples attached with single bolt, double bolt, wire or band type clamps.

★ Kuriyama offers a full line of Quick-Acting couplings, pin lug shank couplings and combination nipples. Refer to current Kuriyama-Couplings™ and Accessories Catalog for type and pricing.

BECAUSE WE CONTINUALLY EXAMINE WAYS TO IMPROVE OUR PRODUCTS, WE RESERVE THE RIGHT TO ALTER SPECIFICATIONS OR DISCONTINUE PRODUCTS WITHOUT PRIOR NOTICE.



# Material Handling



## HWT763AA 75 PSI Heavy Duty Dry Powder Delivery Hose 3/8" Tube

**Applications:**

Discharge of dry powders under low pressure.  
Pneumatic transfer of dry materials and abrasive slurries.

**Cover:**

Black conductive SBR/NR blend – abrasion and ozone resistant.

**Reinforcement:**

Spiraled high tensile textile cords.

**Tube:**

3/8" black static conducting NR – compounded to resist cutting by abrasive materials.

**Working Pressure:**

Constant Pressure – 5 Bar (75 PSI)

**Temperature Range:**

-22°F (-30°C) to 176°F (+80°C)

**Branding:**

ALFAGOMMA – ITALY T763 5 BAR (75 PSI) HEAVY DUTY BULK MATERIAL DELIVERY (in green letters)

**Standard Length:**

100 feet

### Nominal Specifications

| Series      | ID (in.) | ID (mm) | OD (in.) | OD (mm) | Max Rec. WP (PSI) | Weight (lbs./ft.) |
|-------------|----------|---------|----------|---------|-------------------|-------------------|
| HWT763AA400 | 4        | 102     | 4.96     | 126     | 75                | 2.56              |

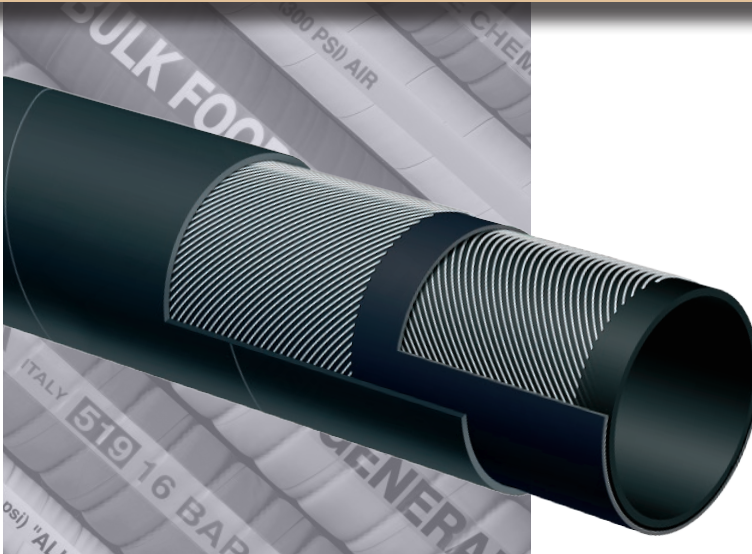
★ Excessive bending during operation may cause premature wear.

**COUPLING SUGGESTIONS**

Quick-Acting, pin lug, short shank couplings or combination nipples attached with single bolt, double bolt, wire or band type clamps.

★ Kuriyama offers a full line of Quick-Acting couplings, pin lug shank couplings and combination nipples. Refer to current Kuriyama-Couplings™ and Accessories Catalog for type and pricing.

BECAUSE WE CONTINUALLY EXAMINE WAYS TO IMPROVE OUR PRODUCTS, WE RESERVE THE RIGHT TO ALTER SPECIFICATIONS OR DISCONTINUE PRODUCTS WITHOUT PRIOR NOTICE.



## T766AA

### 150 PSI Heavy Duty Dry Powder Delivery Hose

**Applications:**

Discharge of dry powders in heavy duty applications, such as dry cement, grains and animal feed transfer.

**Cover:**

Black conductive SBR/NR blend – abrasion and ozone resistant.

**Reinforcement:**

Spiraled high tensile textile cords.

**Tube:**

1/4" black static conducting NR – compounded to resist cutting by abrasive materials.

**Working Pressure:**

Constant Pressure – 10 Bar (150 PSI)

**Temperature Range:**

-22°F (-30°C) to 176°F (+80°C)

**Branding:**

ALFAGOMMA – ITALY T766 10 Bar (150 PSI) BULK MATERIAL DELIVERY (in white letters)

**Standard Length:**

100 feet

### Nominal Specifications

| Series    | ID (in.) | ID (mm) | OD (in.) | OD (mm) | Max Rec. WP (PSI) | Weight (lbs./ft.) |
|-----------|----------|---------|----------|---------|-------------------|-------------------|
| T766AA400 | 4        | 102     | 4.65     | 118     | 150               | 1.96              |

★ Excessive bending during operation may cause premature wear.

**COUPLING SUGGESTIONS**

Quick-Acting, pin lug, short shank couplings or combination nipples attached with single bolt, double bolt, wire or band type clamps.

★ Kuriyama offers a full line of Quick-Acting couplings, pin lug shank couplings and combination nipples. Refer to current Kuriyama-Couplings™ and Accessories Catalog for type and pricing.

BECAUSE WE CONTINUALLY EXAMINE WAYS TO IMPROVE OUR PRODUCTS, WE RESERVE THE RIGHT TO ALTER SPECIFICATIONS OR DISCONTINUE PRODUCTS WITHOUT PRIOR NOTICE.