

## T405LL 150 PSI White Food S & D Hose



### Applications:

Liquid, fatty, oily food and alcoholic beverage (max 75 proof) suction and discharge.

**Hose may be sterilized with 5% soda solution.**

★ **Not recommended for dry abrasive materials.**

### Cover:

White NBR/PVC – abrasion, ozone and oil resistant.

### Reinforcement:

Spiraled high tensile textile cords with flexible steel helix wire.

### Tube:

White NBR. Meets FDA and 3A requirements.

### Working Pressure:

Constant Pressure – 10 Bar (150 PSI)

### Temperature Range:

-22°F (-30°C) to 212°F (+100°C)

### Branding:

ALFAGOMMA – ITALY T405 10 BAR (150 PSI) – GENERAL PURPOSE FOOD QUALITY – S & D (black letters)

### Standard Length:

100 feet

### Nominal Specifications

Series	ID (in.)	ID (mm)	OD (in.)	OD (mm)	Max Rec. WP (PSI)	Vacuum HG (in.)	Min. Bending Radius (in. @ 68°F)	Weight (lbs./ft.)
T405LL100	1	25	1.46	37	150	30	3	0.61
T405LL150	1 1/2	38	1.97	50	150	30	4 1/2	0.84
T405LL200	2	51	2.48	63	150	30	6	1.08
T405LL300	3	76	3.46	88	150	27	9	1.71
T405LL400	4	102	4.57	116	150	27	12	2.36

**CONSULT FOOD HOSE GUIDE FOR MATERIAL COMPATIBILITY ON PAGE 35.**

### COUPLING SUGGESTIONS

Quick-Acting or combination nipples attached with single bolt, double bolt, wire or band type clamps.

★ Kuriyama offers a full line of Quick-Acting couplings, pin lug shank couplings and combination nipples. Refer to current Kuriyama-Couplings™ and Accessories Catalog for type and pricing.

BECAUSE WE CONTINUALLY EXAMINE WAYS TO IMPROVE OUR PRODUCTS, WE RESERVE THE RIGHT TO ALTER SPECIFICATIONS OR DISCONTINUE PRODUCTS WITHOUT PRIOR NOTICE.



## **T405LB** 150 PSI Grey Food S & D Hose

**Applications:**

Liquid, fatty, oily food and alcoholic beverage (max 75 proof) suction and discharge.

**Hose may be sterilized with 5% soda solution.**

★ **Not recommended for dry abrasive materials.**

**Cover:**

Grey NBR/PVC – abrasion, ozone and oil resistant.

**Reinforcement:**

Spiraled high tensile textile cords with flexible steel helix wire.

**Tube:**

White NBR. Meets FDA and 3A requirements.

**Working Pressure:**

Constant Pressure – 10 Bar (150 PSI)

**Temperature Range:**

-22°F (-30°C) to 212°F (+100°C)

**Branding:**

ALFAGOMMA – ITALY T405 10 BAR (150 PSI) – GENERAL PURPOSE FOOD QUALITY – S & D (black letters)

**Standard Length:**

100 feet

**Nominal Specifications**

Series	ID (in.)	ID (mm)	OD (in.)	OD (mm)	Max Rec. WP (PSI)	Vacuum HG (in.)	Min. Bending Radius (in. @ 68°F)	Weight (lbs./ft.)
T405LB150	1 1/2	38	1.97	50	150	30	4 1/2	0.84
T405LB200	2	51	2.48	63	150	30	6	1.08
T405LB300	3	76	3.46	88	150	27	9	1.71
T405LB400	4	102	4.57	116	150	27	12	2.36

**CONSULT FOOD HOSE GUIDE FOR MATERIAL COMPATIBILITY ON PAGE 35.**

**COUPLING SUGGESTIONS**

Quick-Acting or combination nipples attached with single bolt, double bolt, wire or band type clamps.

★ Kuriyama offers a full line of Quick-Acting couplings, pin lug shank couplings and combination nipples. Refer to current Kuriyama-Couplings™ and Accessories Catalog for type and pricing.

BECAUSE WE CONTINUALLY EXAMINE WAYS TO IMPROVE OUR PRODUCTS, WE RESERVE THE RIGHT TO ALTER SPECIFICATIONS OR DISCONTINUE PRODUCTS WITHOUT PRIOR NOTICE.

## T410LL

### 240 PSI Food & Beverage S & D Hose – Crush Resistant



#### Applications:

Food and alcoholic beverage suction and discharge. Specially designed for wine, beer and spirits, up to 95 proof.

**Hose may be sterilized with steam at 226°F (+130°C) for 30 minutes or with 5% soda solution.**

★ **Not recommended for dry abrasive materials.**

#### Cover:

White EPDM – abrasion and ozone resistant.

#### Reinforcement:

High tensile textile cords with embedded **PET** helix.

#### Tube:

White nontoxic CIIR. Meets FDA and 3A requirements.

#### Working Pressure:

Constant Pressure – 16 Bar (240 PSI)

#### Temperature Range:

-22°F (-30°C) to 226°F (+108°C)

#### Branding:

ALFAGOMMA – ITALY T410 16 BAR (240 PSI) – FOOD SUCTION & DELIVERY – CRUSH RESISTANT (in black letters)

#### Standard Length:

100 feet

### Nominal Specifications

Series	ID (in.)	ID (mm)	OD (in.)	OD (mm)	Max Rec. WP (PSI)	Vacuum HG (in.)	Min. Bending Radius (in. @ 68°F)	Weight (lbs./ft.)
T410LL100	1	25	1.46	37	240	30	4	0.60
T410LL150	1 1/2	38	2.05	52	240	30	6	1.00
T410LL200	2	51	2.56	65	240	30	8	1.29
T410LL300	3	76	3.62	92	240	30	12	2.23

**CONSULT FOOD HOSE GUIDE FOR MATERIAL COMPATIBILITY ON PAGE 35.**

#### COUPLING SUGGESTIONS

Quick-Acting couplings attached with bands.

★ Kuriyama offers a full line of Quick-Acting couplings, pin lug shank couplings and combination nipples. Refer to current Kuriyama-Couplings™ and Accessories Catalog for type and pricing.

BECAUSE WE CONTINUALLY EXAMINE WAYS TO IMPROVE OUR PRODUCTS, WE RESERVE THE RIGHT TO ALTER SPECIFICATIONS OR DISCONTINUE PRODUCTS WITHOUT PRIOR NOTICE.



## T410LB 240 PSI Food & Beverage S & D Hose – Crush Resistant

**Applications:**

Food and alcoholic beverage suction and discharge. Specially designed for wine, beer and spirits, up to 95 proof.

**Hose may be sterilized with steam at 226°F (+130°C) for 30 minutes or with 5% soda solution.**

★ **Not recommended for dry abrasive materials.**

**Cover:**

Grey EPDM – abrasion and ozone resistant.

**Reinforcement:**

High tensile textile cords with embedded PET helix.

**Tube:**

White nontoxic CIIR. Meets FDA and 3A requirements.

**Working Pressure:**

Constant Pressure – 16 Bar (240 PSI)

**Temperature Range:**

-22°F (-30°C) to 226°F (+108°C)

**Branding:**

ALFAGOMMA – ITALY T410 16 BAR (240 PSI) – FOOD SUCTION & DELIVERY – CRUSH RESISTANT (in black letters)

**Standard Length:**

100 feet

**Nominal Specifications**

Series	ID (in.)	ID (mm)	OD (in.)	OD (mm)	Max Rec. WP (PSI)	Vacuum HG (in.)	Min. Bending Radius (in. @ 68°F)	Weight (lbs./ft.)
T410LB100	1	25	1.46	37	240	30	5	0.60
T410LB200	2	51	2.56	65	240	30	8	1.29
T410LB300	3	76	3.62	92	240	30	12	2.23

**CONSULT FOOD HOSE GUIDE FOR MATERIAL COMPATIBILITY ON PAGE 35.**

**COUPLING SUGGESTIONS**

Quick-Acting couplings attached with bands.

★ Kuriyama offers a full line of Quick-Acting couplings, pin lug shank couplings and combination nipples. Refer to current Kuriyama-Couplings™ and Accessories Catalog for type and pricing.

BECAUSE WE CONTINUALLY EXAMINE WAYS TO IMPROVE OUR PRODUCTS, WE RESERVE THE RIGHT TO ALTER SPECIFICATIONS OR DISCONTINUE PRODUCTS WITHOUT PRIOR NOTICE.

# FDA Liquid Food Transfer



## T426LB 150 PSI Grey Food S & D Hose–Corrugated

**CORRUGATED**



### Applications:

Liquid, fatty, oily food and alcoholic beverage (max 75 proof) suction and discharge.

**Hose may be sterilized with 5% soda solution.**

★ **Not recommended for dry abrasive materials.**

### Cover:

Grey NBR/PVC – abrasion, ozone and oil resistant.

### Reinforcement:

High tensile textile cords with flexible steel helix wire.

### Tube:

White NBR. Meets FDA and 3A requirements.

### Working Pressure:

Constant Pressure – 10 Bar (150 PSI)

### Temperature Range:

-22°F (-30°C) to 176°F (+80°C)

### Branding:

ALFAGOMMA – ITALY T426 10 BAR (150 PSI) – GENERAL PURPOSE FOOD QUALITY – S & D (black letters)

### Standard Length:

100 feet

### Nominal Specifications

Series	ID (in.)	ID (mm)	OD (in.)	OD (mm)	Max Rec. WP (PSI)	Vacuum HG (in.)	Min. Bending Radius (in. @ 68°F)	Weight (lbs./ft.)
T426LB300	3	76	3.62	92	150	30	6	1.84
T426LB400	4	102	4.65	118	150	30	8	2.69

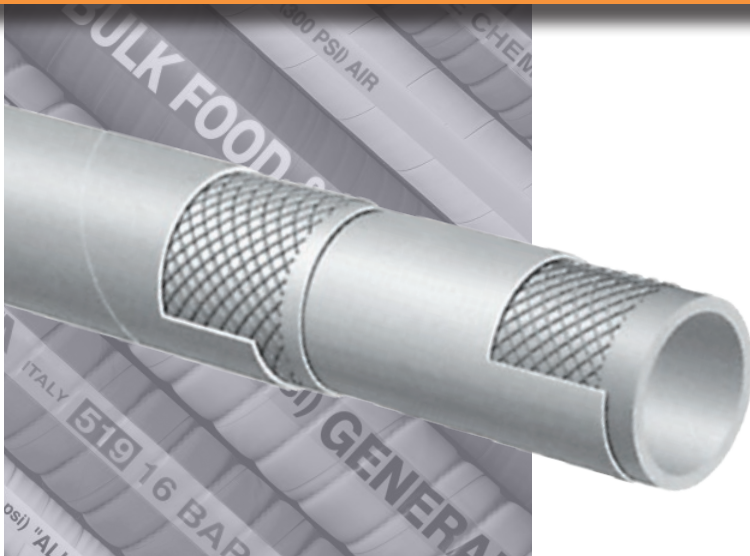
**CONSULT FOOD HOSE GUIDE FOR MATERIAL COMPATIBILITY ON PAGE 35.**

### COUPLING SUGGESTIONS

Quick-Acting or combination nipples attached with single bolt, double bolt, wire or band type clamps.

★ Kuriyama offers a full line of Quick-Acting couplings, pin lug shank couplings and combination nipples. Refer to current Kuriyama-Couplings™ and Accessories Catalog for type and pricing.

BECAUSE WE CONTINUALLY EXAMINE WAYS TO IMPROVE OUR PRODUCTS, WE RESERVE THE RIGHT TO ALTER SPECIFICATIONS OR DISCONTINUE PRODUCTS WITHOUT PRIOR NOTICE.



## T455LL 150 PSI Food Discharge Hose

**Applications:**

Discharge of liquid, fatty, oily foods and alcoholic beverages (max 75 proof).

**Hose may be sterilized with 5% soda solution.**

★ **Not recommended for dry abrasive materials.**

**Cover:**

White NBR/PVC blend – abrasion, ozone and oil resistant.

**Reinforcement:**

High tensile textile cords.

**Tube:**

White NBR. Meets FDA and 3A requirements.

**Working Pressure:**

Constant Pressure – 10 Bar (150 PSI)

**Temperature Range:**

-22°F (-30°C) to 176°F (+80°C)

**Branding:**

ALFAGOMMA – ITALY T455 10 BAR (150 PSI) – GENERAL PURPOSE FOOD TRANSFER (in black letters)

**Standard Length:**

100 feet

**Nominal Specifications**

Series	ID (in.)	ID (mm)	OD (in.)	OD (mm)	Max Rec. WP (PSI)	Weight (lbs./ft.)
T455LL150	1 1/2	38	1.89	48	150	0.60
T455LL200	2	51	2.48	63	150	0.95
T455LL300	3	76	3.46	88	150	1.38

**CONSULT FOOD HOSE GUIDE FOR MATERIAL COMPATIBILITY ON PAGE 35.**

**COUPLING SUGGESTIONS**

Quick-Acting couplings attached with bands.

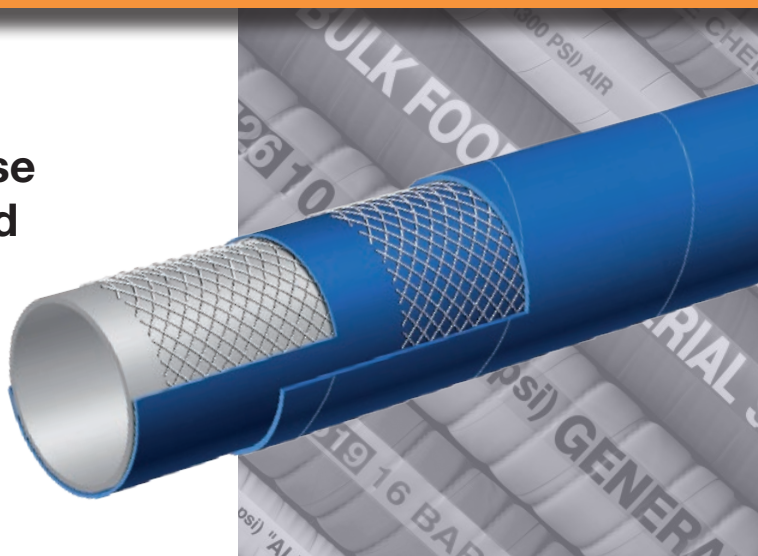
★ Kuriyama offers a full line of Quick-Acting couplings, pin lug shank couplings and combination nipples. Refer to current Kuriyama-Couplings™ and Accessories Catalog for type and pricing.

BECAUSE WE CONTINUALLY EXAMINE WAYS TO IMPROVE OUR PRODUCTS, WE RESERVE THE RIGHT TO ALTER SPECIFICATIONS OR DISCONTINUE PRODUCTS WITHOUT PRIOR NOTICE.

## T452LE

### 150 PSI Potable Water Hose

Hose is not NSF Approved



**Applications:**

Discharge of water used for drinking. Most often used for temporary water lines in construction and industrial applications.

**Cover:**

Blue SBR/EPDM blend – abrasion and ozone resistant.

**Reinforcement:**

High tensile textile cords.

**Tube:**

White NR. Meets FDA and 3A requirements.

**Working Pressure:**

Constant Pressure – 10 Bar (150 PSI)

**Temperature Range:**

-22°F (-30°C) to 176°F (+80°C)

**Branding:**

ALFAGOMMA – ITALY T452 10 BAR POTABLE WATER HOSE (150 PSI) WP (in white letters)

**Standard Length:**

100 feet

### Nominal Specifications

Series	ID (in.)	ID (mm)	OD (in.)	OD (mm)	Max Rec. WP (PSI)	Weight (lbs./ft.)
T452LE150	1 1/2	38	1.97	50	150	0.73
T452LE200	2	51	2.56	65	150	1.13
T452LE300	3	76	3.62	92	150	1.88
T452LE400	4	102	4.65	118	150	2.51

**CONSULT FOOD HOSE GUIDE FOR MATERIAL COMPATIBILITY ON PAGE 35.**

**COUPLING SUGGESTIONS**

Quick-Acting couplings attached with bands.

★ Kuriyama offers a full line of Quick-Acting couplings. Refer to current Kuriyama-Couplings™ and Accessories Catalog for type and pricing.

BECAUSE WE CONTINUALLY EXAMINE WAYS TO IMPROVE OUR PRODUCTS, WE RESERVE THE RIGHT TO ALTER SPECIFICATIONS OR DISCONTINUE PRODUCTS WITHOUT PRIOR NOTICE.

The following data is based on tests and believed to be reliable; however, we emphasize that the tabulation should be used as a guide only, since it does not take into consideration all variables such as elevated temperatures, fluid contamination, concentration, etc. that may be encountered in actual use. All critical applications should be tested. Contact ALFAGOMMA for recommendation and assistance.

## KEY TO FDA LIQUID MATERIAL COMPATIBILITY CHART

Key to General Chemical Resistance Chart [all data based on 20°C (68°F) unless noted]:

E – Excellent; G – Good; F – Fair; C – Conditional; I – Insufficient Data; X – Not Recommended; Blank – No Data

Alfagomma® hoses are produced using silicone free release agents.

FOOD	NATURAL RUBBER	CHLOROBUTYL	EPDM	NBR
BEER	F	G	E	E
BEET SUGAR, GRANULAR	E	X	G	E
BUTTERMILK	X	F	G	E
CANE SUGAR, GRANULAR	E	X	G	G
CASHEW NUT OIL	X	F	G	
CASTOR OIL	X	F	G	E
CITRIC ACID	E	E	E	E
COCOA BUTTER	X	F	G	G
COCONUT OIL	X	F	G	E
CORN OIL	X	F	G	E
COTTONSEED OIL	X	F	G	E
ETHANOL (GRAIN ALCOHOL)	F	G	E	E
FISH MEAL				
FLOUR	E	X	G	
GRAPE JUICE	F	G	E	G
LACTIC ACID	F	F	G	E
LARD OIL	X	F	G	E
LINSEED OIL	X	F	G	E
LIQUOR (SPIRITS)	F	G	E	G
MILK	E	E	E	E
MINERAL OIL	X	X	X	E
MOLASSES	E	E	E	E
OLEIC ACID	X	F	G	F
OLIVE OIL	X	F	G	E
PALMITIC ACID	X	F	G	E
PARAFFINS	X	X	X	E
PEANUT OIL	X	F	G	E
POTATO FLOUR	E	X	G	
SALT, GRANULAR	E	X	G	E
SOYBEAN OIL	X	F	G	E
SUCROSE, GRANULATED	E	X	G	G
SUGAR, GRANULATED	E	X	G	F
SUGAR SYRUP	E	E	E	F
TALLOW	X	X		E
TOMATO JUICE, PASTE & PUREE SAUCE	E	E	E	G
VEGETABLE OILS	X	F	G	E
VINEGAR	F	F	G	F
WATER, POTABLE	E	E	E	E
WHISKEY	F	G	E	E
WINES	F	G	E	E

BECAUSE WE CONTINUALLY EXAMINE WAYS TO IMPROVE OUR PRODUCTS, WE RESERVE THE RIGHT TO ALTER SPECIFICATIONS OR DISCONTINUE PRODUCTS WITHOUT PRIOR NOTICE.